

CONTENT STUDIO

INSERTING DATA FIELDS


Users can customize messages with real time data within Content Studio. A full set of date, time, and temperature formatting options are available.

INSERTING TIME

1. Click the **Insert** tab on the ribbon, and click **Time** in Data section (see figure 1). Select a **Time Format** from the drop down list (see figure 2).
2. Position the Time to desired location within the layout (see figure 3).

INSERTING TEMPERATURE

1. Click the **Insert** tab on the ribbon, and click **Temperature** in Data section (see figure 1). Select a **Temperature Format** from the drop down list.
2. Position the Temperature to desired location within the layout (see figure 3).

 Note: Temperature will only show on those displays purchased with a temp sensor.

INSERTING DATE

1. Click the **Insert** tab on the ribbon, and click **Date** in Data section. Select a **Date Format** from the drop down list.
2. Position the Date to desired location within the layout (see figure 3).

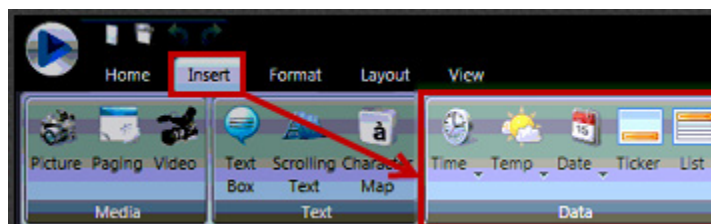


Figure 1: Data group on the Insert tab.

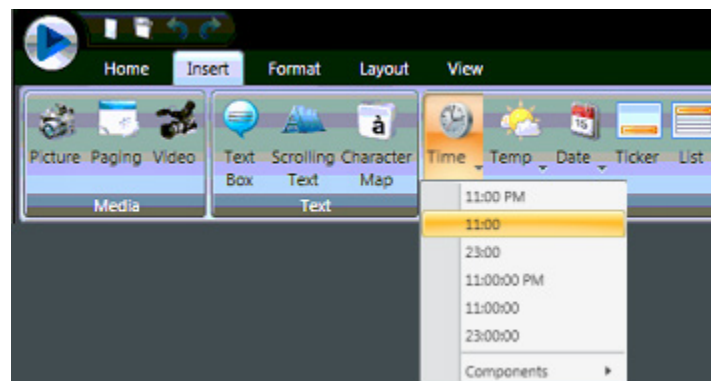


Figure 2: Data group format options.

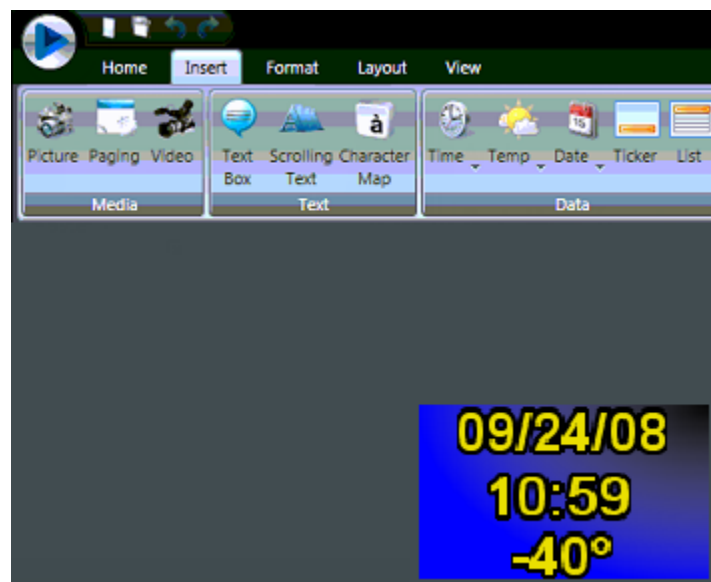


Figure 3: Date, Time, Temp layout.