

Configuring & Editing an XML Source

XML stands for Extensible Markup Language and is commonly used to store various information in a structured manner. An XML feed can be pulled from an FTP site, web or your local machine. This feature is only compatible with DMP-8000 players and Venus 1500 v4.18 or higher.

1. Select the **Orange V** and then click on **Configure Sources**. See Fig. 1
The **Add New Data Source** window opens. Click the **Add New Source** button.
2. Select XML for **Source Type**, choose **File Location** (we chose Local) and **browse** to the XML file on your computer. Click **Create**. See Fig. 2
3. Read the **Usage Agreement for Data Feeds** and then click on Agree.

Trap: Before using a web feed, read the owner's terms of usage. If it states that the feed is only for noncommercial use, please make sure to get the owner's permission before running the feed on your display.

Tip: Daktronics offers feeds from an approved vendor via <http://buy.daktronics.com>

4. The **Configure Sources** window appears again with three tabs – **Source**, **XML** and **Displays**. Select **XML tab** and enter the **XPath Statement** for the source. In our example, enter **/safety[1]/item** Click **Save and Close**. See Fig. 3
5. To **Edit** the XML feed, repeat step 1 to open the **Configure Sources** window. Click the feed you want to edit.

Fetch Data Every sets how often data is received and sent to the display

Set Data Expiration/ Never Expire lets you choose to hide data after a specified amount of time; set what should appear on the display after the expiration date is reached; or choose never expire to always show data

Exercise

Exercise: Configure an XML source. If you don't have one, you can download this example:



Safety Report.xml

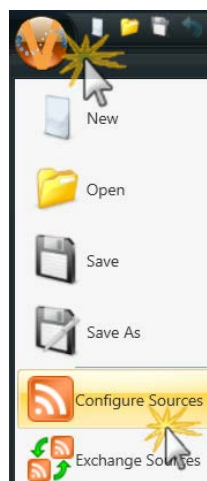


Figure 1: Select the Orange V and then click on Configure Sources.

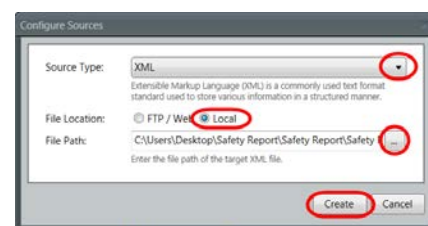


Figure 2: Select the settings

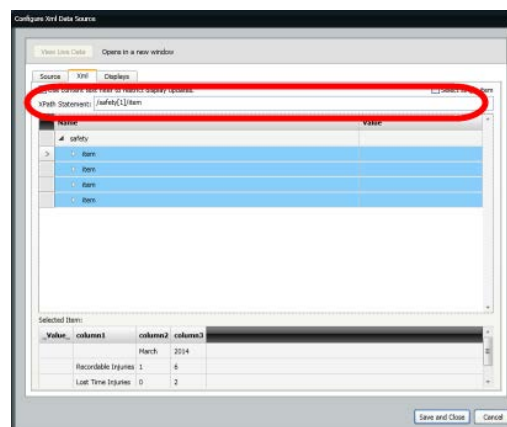


Figure 3: Enter the XPath Statement

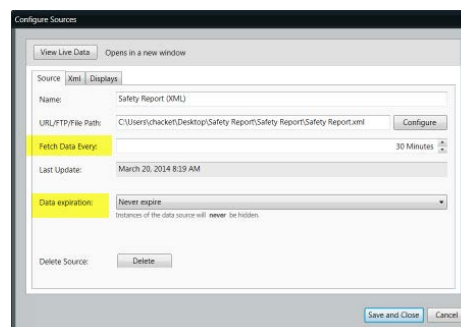


Figure 4: Editing Fetch Data Every and Data Expiration