

Verifying a feed

You have your feed all set up now, but are wondering why you can't see it in the Content Studio preview? Or is it not refreshing on the display? You can make sure the feed has information by following these instructions to view the live data.

1. Select the feed on the layout to activate the **Ticker Tab** and then click on **Edit** in the **Sources** group. (See Figure 1)
2. The **Select Data Source** window opens. Click the link you want to view. (See Figure 2)
- 3a. Select the **View Live Data** button at the top of the **Configure Data Source** window. The **View Live Data** window will open. You can expand a Title by clicking on the + sign. This will show you if there is content to play.
- 3b. In the **Configure Data Source** window, click on the **Displays** tab. If the display has been shut down for some reason, send the new data now by clicking on the **Send Now** button. (See Figure 4)

! Trap: For content to continue to update on your display, you must leave your computer running. You may close Venus 1500.

✓ Tip: There is an Alert on the Home Tab that will tell you if your computer is unplugged. This will help you avoid your computer shutting down when the battery gets low and thereby preventing the feed from updating.

Exercise

- **Exercise:** View the live data on an existing feed by using the Edit option.

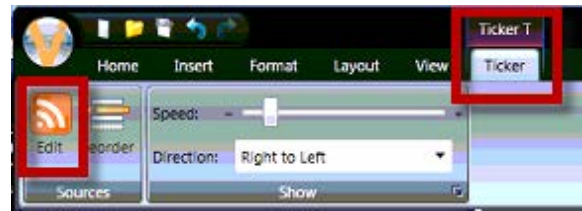


Figure 1: Select the feed in the layout to activate the Ticker Tab. Click Edit.

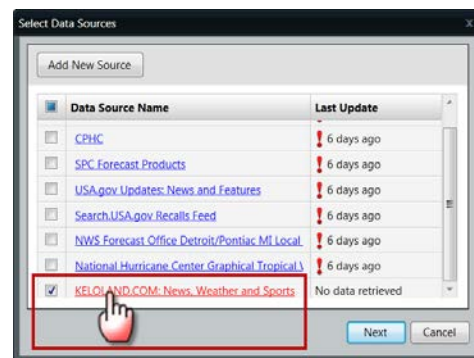


Figure 2: Select the Source you want to view.

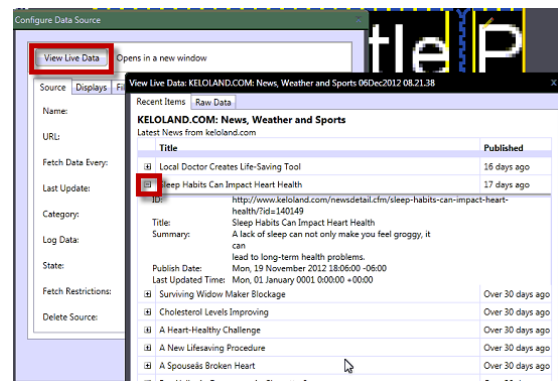


Figure 3: View Live Data Window

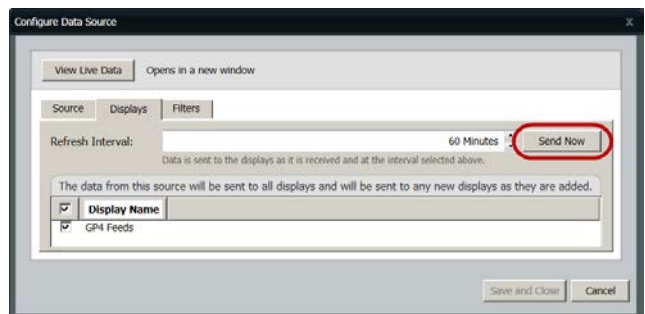


Figure 4: Send Now button to update display before the refresh interval.