



Inserting a feed – Data List

Data List is a static feed; useful if you have zoning restrictions for movement on the display. RSS and Atom feeds contain entries, which may be headlines, full-text articles, excerpts, summaries, and/or links to content on a website. They can be weather related, news, financial, health or more! It is common to find web feeds on major Web sites, but remember... if you want to play them on your display, you must have permission from the owner. This feature is only compatible with DMP-8000 players and Venus 1500 v4.18 or higher.

1. Select the **Insert Tab** and then click on **List**. (See Fig. 1) Then click in the layout.
The **Add New Data Source (Select New Data Source)** window opens. Click the **Add New Source** button.
2. Paste the URL of the RSS or Atom feed into the URL field. (See Figure 2)
3. Read the **Usage Agreement for Data Feeds** and then click on **Agree**.

❗ Trap: Before using a web feed, read the **owner's terms of usage**. If it states that the feed is only for noncommercial use, please make sure to get the owner's permission before running the feed on your display.

✔ Tip: Daktronics offers feeds from an approved vendor via <http://buy.daktronics.com>

✔ Tip: Make sure your layout is long enough for the feed to play out. An easy way to stretch out everything is to hold down the Alt key and then drag out the Layout in the timeline. Everything below the layout will change too!

4. In the **Select Data Source** window, select the radio button next to the feed you want to use and click **Next**.

Select a Template by choosing the format you would like your feed to show on the display. Then click **Next**. (See Figure 3)

5. Preview the feed and adjust the element box as needed.

Exercise

- **Exercise:** Insert a feed on a new layout

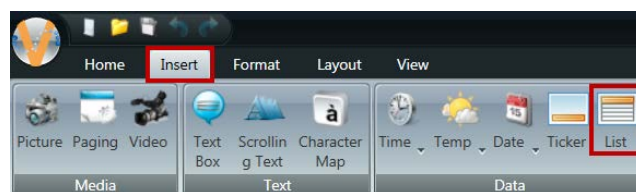


Figure 1: Select the Insert tab then click on List.

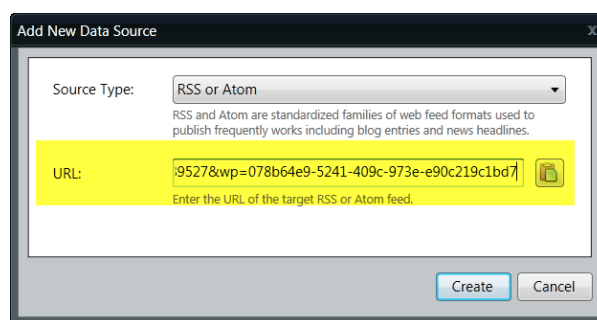


Figure 2: Paste the URL of the RSS or Atom feed in the URL field.

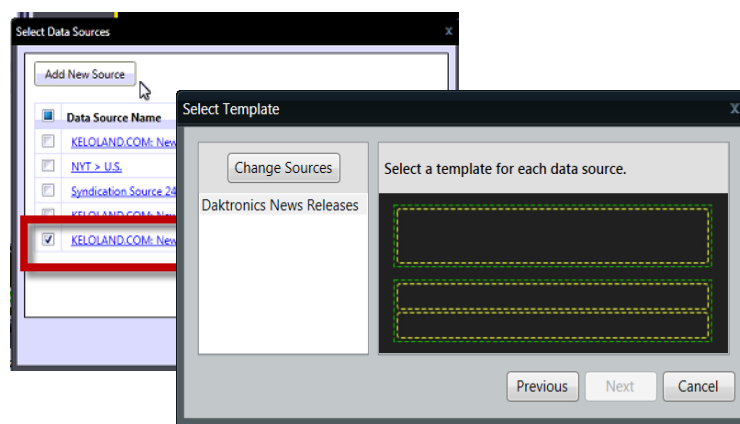


Figure 3: Select Data Source and Template Windows