

Inserting Graphic from a File

Venus 1500 has the option to import graphics from locations other than its own Daktronics Media Library.

1. On the Home tab, click on the **Media Item** button from the **Quick Insert** group. (See Figure 1)
2. Choose **Picture** from the drop down menu.
3. Browse to where the desired Picture is located and choose **Open**. (See Figure 2)
4. Choose **Import** from the **Image Import** window. (See Figure 3)

- 🔍 Venus 1500 Version 4 software supports the following graphic image types:
 - jpg
 - bmp
 - png
 - tif or tiff
 - gif
 - psd

✔ **Tip:** You can also import a graphic from the **Insert** tab in the **Media group**.

✔ **Tip:** You can also import a graphic from the **Media Library** by browsing for your file under the **Search In** area.

Exercise

- **Exercise:** Insert a graphic utilizing the 3 different ways.

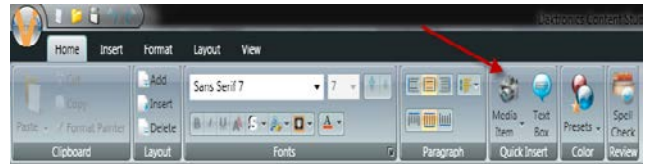


Figure 1: Insert a Graphic from the Home tab.

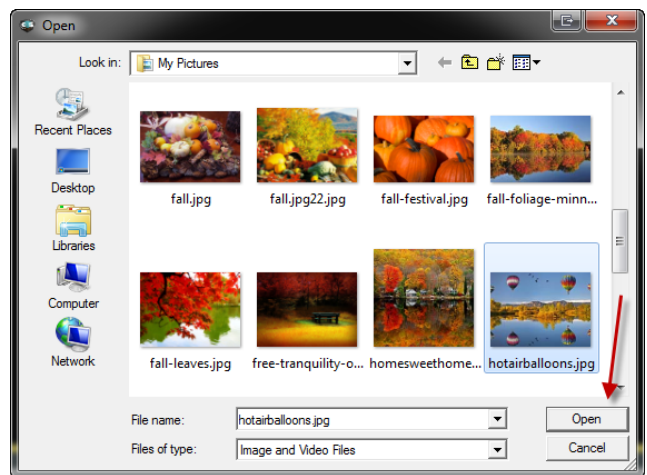


Figure 2: Browse to the graphic location within computer files.

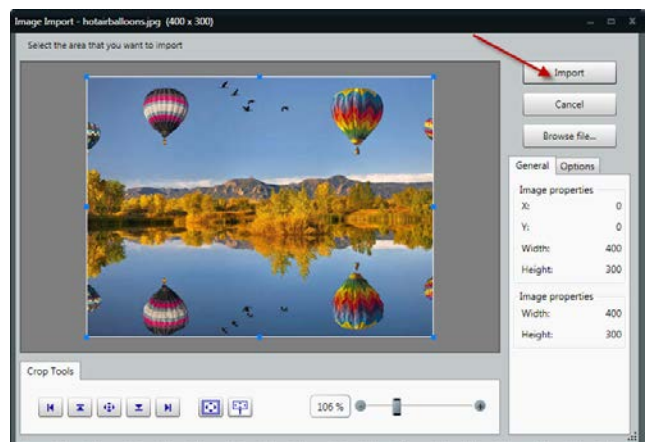


Figure 3: Import the graphic into Content Studio.