

Inserting Graphics - Media Library

Graphics are still images that can be imported into Venus 1500 for use on your display. There are different file formats accepted and Daktronics has also included graphics as a part of your Media Kit.

Graphics can be any of these file formats: .jpg, .bmp, .gif, .tif, .tiff, .psd, or .png. Daktronics recommends 72 dpi (dots per inch) and RGB color.

1. Click the **Images** tab in the Media Library. (Fig 1)
2. Click the **More** button. (Fig 1)
3. Select the Folder to look in.

There are four options listed here:

- **My Documents:** Searches all folders within your Documents folder.
- **My Pictures:** Searches your My Pictures folder for image files stored on your computer.
- **Daktronics Library:** Searches the Daktronics Media Kit.
- **Browse:** Allows you to navigate or browse to any location accessible from your computer.

4. Click the **Search** button to populate the window. Use the directional arrows below the Search button to view additional pages. (Fig 2)
5. Scroll through the graphics until you find one that you like.
6. Double click the graphic that you want to insert.

7. Click the **Import** button in the upper-right corner of the Image Import window.

The window closes.

- ✔ **Tip:** You can place text over a graphic by using a text box or double clicking on the graphic and entering your text. Placing an outline or shadow on your font will make your presentation pop!

- ❗ **Trap:** If the media kit was not installed when Venus 1500 was configured on your computer, a message may appear informing you that no images are found. Try importing the media kit again by going to your Start menu, Daktronics, Venus 1500 V4, Venus 1500 Media Kit and place a checkmark in the box next to your display then click the Import button.

Exercise

- **Exercise:** Import media kit if not installed. Browse to a media kit image and double click to import it. Add a new layout and import another image from a different page by clicking the left/right arrows just below the Search button.

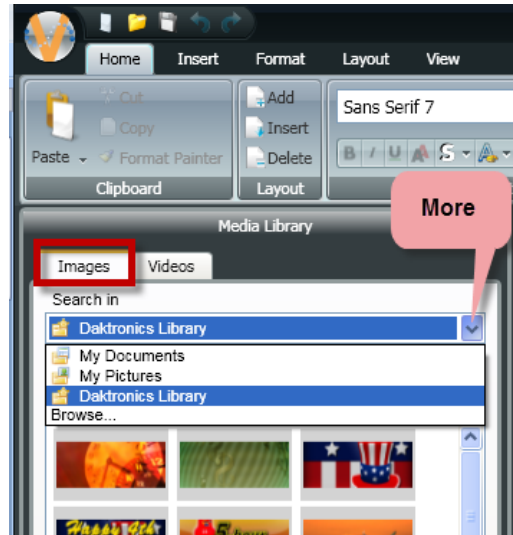


Figure 1

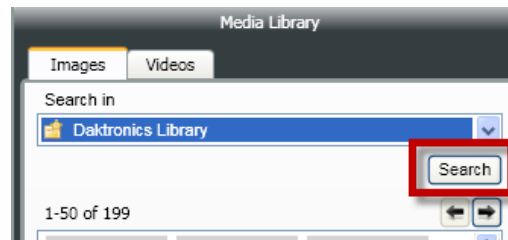


Figure 2

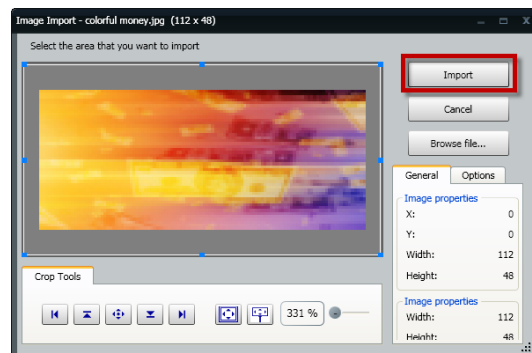


Figure 3