

Additional Installation Instructions for Sectional Galaxy® GT6 Displays

Before bringing the two display sections together, remove the assembly shown in **Figure 2** and **Figure 3**.

The assembly is located in the bottom-right corner of the left and middle sections, when facing the front of the display.

Note: Not all installations include a middle section.

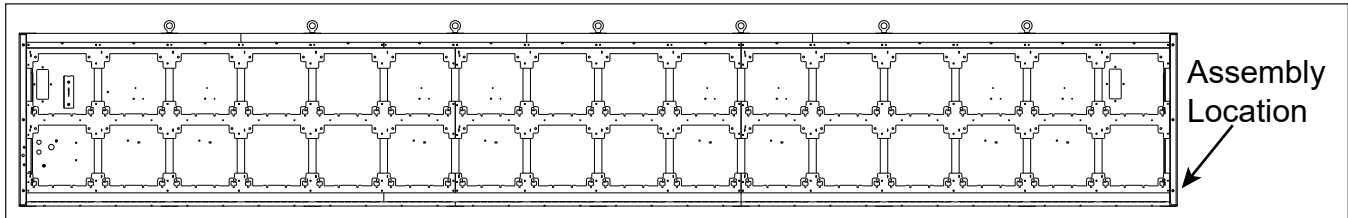


Figure 1: Location of Assembly That Will Be Removed

Use $\frac{3}{4}$ " wrenches or sockets to remove the assembly:

- Nut
- Bolt
- Washer
- Plate

Caution: Leave the assembly in place as long as possible. It temporarily holds the sections together until the two sections are permanently joined to one another.



Figure 2: Location of Assembly



Figure 3: Location of Assembly