

Complete steps for either the Hardware Bridge or the Software Bridge, but not both.

System Requirements

M-Series Hardware Bridge	M-Series Software Bridge	Unsupported Operating Systems	Storage Space & Memory	RAM
Note: M-Series Hardware Bridge software is installed on a Windows 10 operating system in the factory	Note: Bridge software cannot be installed on the same machine as locally hosted Venus Control Suite	<ul style="list-style-type: none"> Mac Parallels Linux 	Hard Drive Space <ul style="list-style-type: none"> 2GB of free space needed per controller 	Minimum RAM <ul style="list-style-type: none"> 2GB
Windows® 10	Windows® 10			Recommended <ul style="list-style-type: none"> X86 - 4GB X64 - 8GB
	Windows® Servers 2012, 2016 Virtual Machine <ul style="list-style-type: none"> Windows® 10 Windows® Server 2012, 2016 			

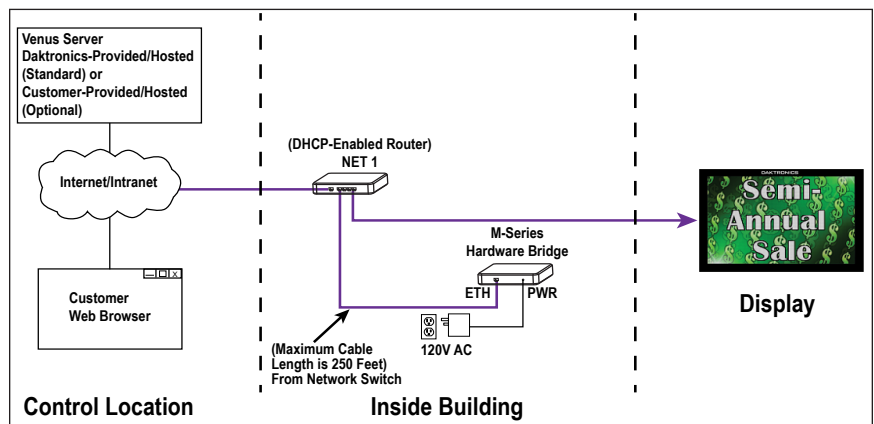
Supported and Unsupported Communication Methods

Supported Communication Methods	Unsupported Communication Methods
Ethernet Hardwired	Serial Communications of Any Type
Ethernet Fiber	Dial-Up
Ethernet Bridge Radios	Cellular Modem

Hardware Bridge Installation

Use the Venus® Control Suite hardware bridge to provide a bridge for Galaxy® AF-32x0, AF-3400 and AF-35x0 series and GalaxyPro® AF-3700 series displays to Venus Control Suite software.

1. Mount the Venus® bridge close to the network equipment.
2. Configure the display for DHCP. See [DD2223713](#) (M2 Config Installation and Use Quick Guide) for instruction to connect the display to the network.



Note: Record the display's DHCP name for future reference.

3. Or configure the display using an IP address. See [DD1980638](#) (Knowledge Base Article: How Do I Change a Static IP Address on a Galaxy® Display) for instruction.

Note: Record the display's IP address for future reference.

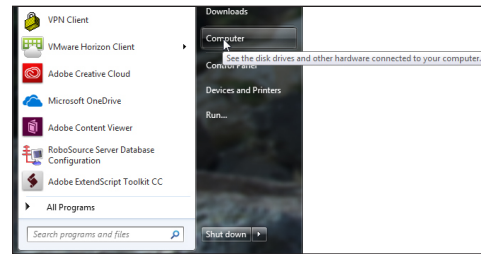
Connect The M-Series Hardware Bridge To A Static IP Address

1. Connect the M-Series Hardware bridge directly to a computer that is set to **Obtain Automatically**. See [DD1961783](#) (DisplayFind Utility Quick Guide) to run Display Find on the computer connected to the bridge. Allow the hardware bridge and the computer to resolve their IP addresses. This usually takes a few minutes.
4. Launch **DisplayFind** and discover the bridge.
5. Once the bridge is found, click the **link** to launch the configuration utility.
6. Enter the **Username, Dak** and the **Password, DakPassword!** and click **Login**.
7. Configure the IP settings. Find IP settings in the **Network** tab in **Bridge Configuration**.
 - IP Address
 - Subnet Mask
 - Default Gateway
 - DNS Servers (if applicable)
8. Click **Save**.
9. Connect the bridge to the network.
10. Configure the Venus Bridge. Follow the steps provided in **Configure the Venus Bridge (p.3)** to complete the configuration process.

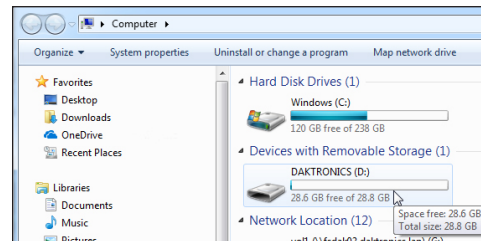
Software Bridge Installation

1. Insert the Software Bridge jump drive in to an available USB port on the control computer.

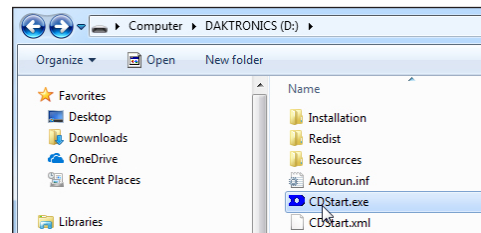
2. Click **Start > Computer**.



3. Double-click **DAKTRONICS** in the **Devices with Removable Storage** area.



4. Double-click **CDStart.exe**.



5. Click **Install M-Series Bridge**.



6. Click **Yes** to all changes to be made to the control computer.
7. Click **Next** to continue installation with the **Daktronics Venus M-Series Bridge - InstallShield Wizard**.
8. Click **I accept the terms in the licence agreement**.
9. Click **Next**.

10. Click **Install** to install the program.
11. Click **Finish** to complete the installation process.
12. Configure the Venus Bridge. Follow the steps provided in **Configure the Venus Bridge (p.3)** to complete the configuration process.

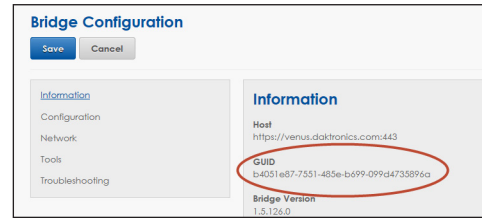
Configure the Venus Bridge

1. Connect the Venus® bridge to the network. See [DD1961783](#) (DisplayFind Utility Quick Guide) for instruction to download and use the DisplayFind utility, which is used to configure the Venus Bridge.
13. In DisplayFind, select the **Network Adapter** used to communicate with your bridge.
14. Click the **Find Displays** button to detect any bridges using the selected network adapter.
15. Detected bridges are listed in the bottom window of the utility.
16. Click the **desired bridge** to launch the configuration utility within your web browser.
17. Enter the **Username, Dak** and the **Password, DakPassword!** and click **Login**.
18. Click **Configuration** on the left side of the Bridge Configuration window.
19. Enter the **Host name** in the **Host** text box.
 - Hosted system: Enter **https://venus.daktronics.com**.
 - Local system: Enter the **Venus® computer name or IP address**.
20. Enter the correct port number.
 - Hosted system: Select **443**.
 - Local system: Select **8811**.



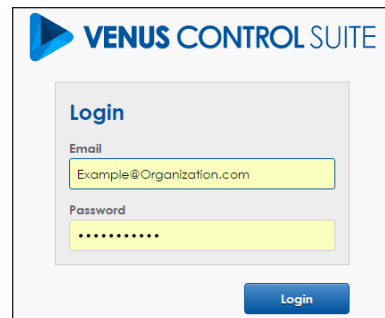
21. Click **Save**.
22. Click **Information** on the left side of the Bridge Configuration window.

23. Record the **GUID** of the bridge for future reference.

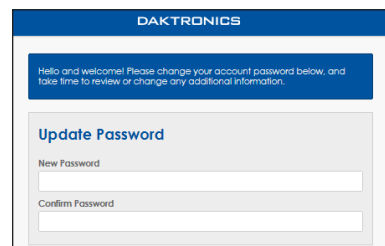


Log In to Hosted Server

1. Navigate to <https://venus.daktronics.com>.
2. Enter the **username** and **password** provided by Daktronics into the **Email** and **Password** text boxes and click **Login**.



3. Type a **new password** in the **New Password** and **Confirm Password** text boxes when the **Update Password** window opens. This step is required only for the first-time login to the Control Suite system.



Note: Passwords are alphanumeric and must contain at least eight characters.

4. Update the account information fields under the **User Information** and **Additional Information** sections and click **Save**.

Log In to Local Server

1. If a Daktronics-hosted server is not used, follow the instructions below to log in to a local server.

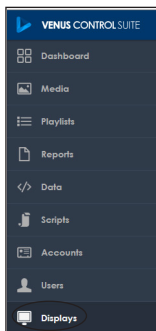
2. Insert the Daktronics-supplied USB drive into an available USB port and double-click the **VenusControlSuite.exe** installer file.
3. Accept the terms of agreement and click **Next** as prompted.
4. Enter a **username** and **organization** in the **Setup Initial User Account** window. An initial temporary password is provided; record the username and temporary password as this information is needed during first-time Venus® Control Suite login.
5. Click **Finish** when all the steps are completed.
6. Restart the computer. A Venus® Control Suite shortcut icon is now available on the computer desktop.
7. Click the **Venus® Control Suite** icon to launch the software.
8. Enter the **username** and **initial temporary password** into the **Email** and **Password** text boxes and click **Login**.
9. Change the password in the **Update Password** window. This step is required only for first-time Venus® Control Suite login system.
2. Update the account information fields in the **User Information** and **Additional Information** sections and click **Save**.



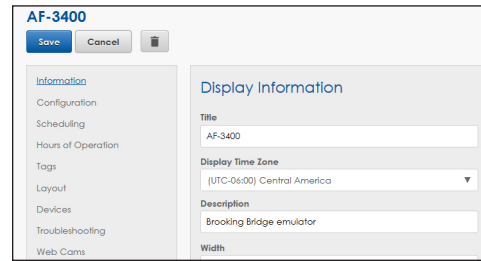
Note: Follow the instructions in **Associate Bridge to Venus Control Suite (p.5)** to associate a hardware bridge with Venus Control Suite.

Assign Bridge to the Display

1. Click **Displays**.



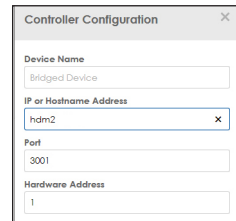
2. Select a **Display**.



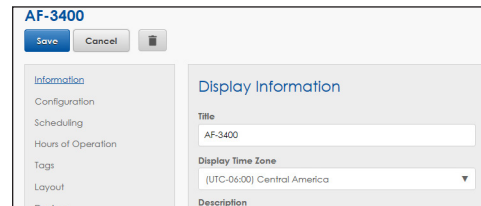
3. Click **Devices**.
4. Click **Connect to Bridge**.



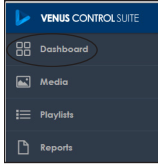
5. Search for the bridge device using the GUID.
6. Select **Bridge**.
7. Enter the display's **DHCP Name** (assigned in the first section) or **Static IP Address** in the **IP** or **Hostname Address** box.



8. Click **Save**.
9. Click **Save**.



10. Go to the **Dashboard** to verify the display is online.



More Information

See the [Venus Control Suite Operation Manual](#) beginning with Section 2 for more information about using the Venus Control Suite.

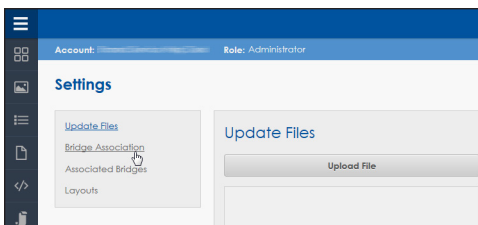
Associate Bridge to Venus Control Suite

Note: Only the Administrator can perform these steps

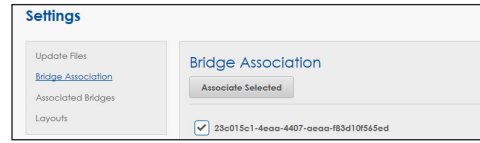
1. Log in to your Venus Control Suite Account.
2. Go to **Settings**.



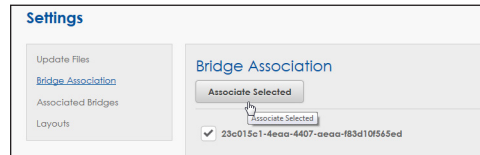
3. Select **Bridge Association**.



4. Search for the GUID of the Hardware Bridge.
5. Once found, select the GUID's check box.



6. Click **Associate Selected**.



Repeat these steps to associate multiple hardware bridges.