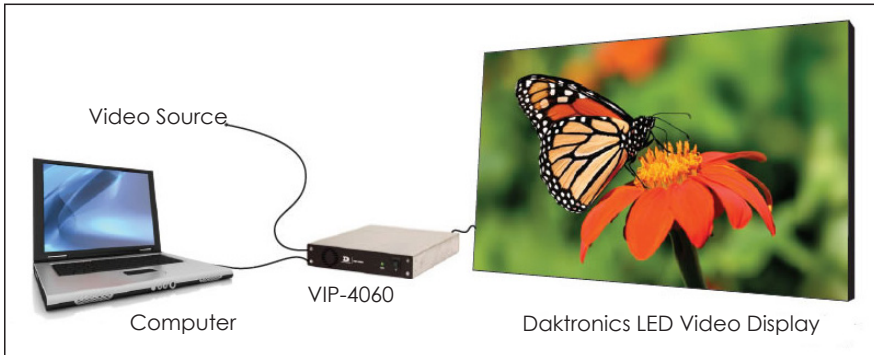


The VIP-4060 is the interface that drives video to the display and meets operational needs such as dimming, displaying test patterns, and adjusting gamma and color controls. This quick guide explains basic VIP-4060 connections and setup as show in **Figure 1**.



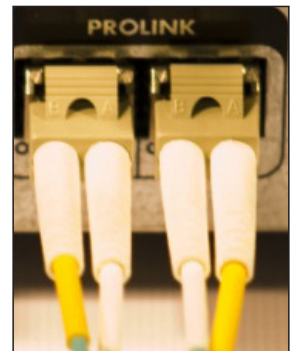
**Figure 1:** VIP-4060 Connections

## Hardware Setup

### Connecting to LED Display

1. Locate fiber-optic Port A and Port B on the VIP-4060.
2. Insert duplex LC fiber-optic cables into their corresponding ports. The cables will click into place when seated properly. Refer to **Figure 2**.

**Note:** Remove the fiber dust covers from the cables prior to inserting into ports.

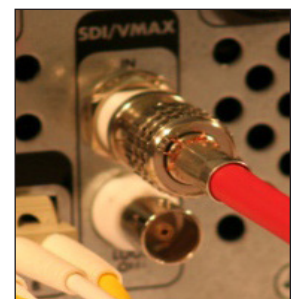


**Figure 2:** Fiber-Optic Ports

### Connecting to Video Source – SDI or V-Max™ Signal

1. Connect the BNC cable to the top SDI/V-Max™ input. Refer to **Figure 3**.
2. Rotate the connector  $\frac{1}{4}$  turn clockwise to lock.
3. Ensure that a 75 ohm terminator is connected to the bottom BNC.

**Note:** The bottom BNC does not function as a loop out.



**Figure 3:** SDI/V-Max™ 4 Input

### Connecting to Video Source – DVI

1. Insert the male plug into the female jack.
2. Turn the screws on the male plug clockwise to lock. Refer to **Figure 4**.



**Figure 4:** DVI Input

## Connecting to Network

1. Connect one end of the RJ45 network cable to the network port. Refer to **Figure 5**.
2. Connect the other end of the cable to the computer or network.



**Figure 5:** Network Input

## Connecting to Power

1. Connect the power cord to the power jack. Refer to **Figure 6**.
2. Plug the other end of the cord into an outlet.



**Figure 6:** Power Input

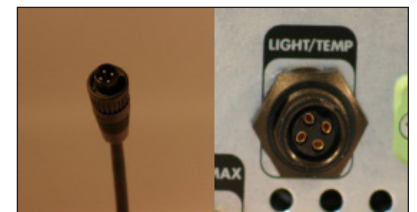
## Connecting Sensors

1. Connect the sensor cable to the **Light/Temp** port. Refer to **Figure 7**.
2. Rotate the connector 1/4 turn clockwise to lock.

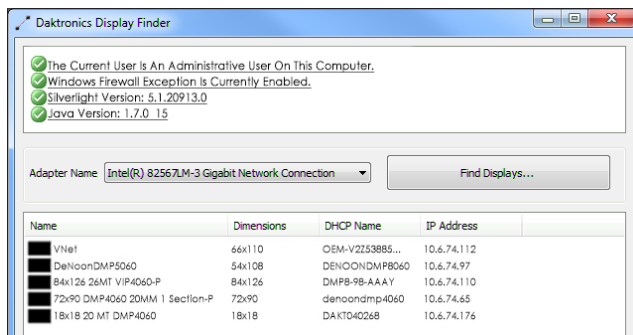
## Computer-to-VIP Communication Setup

### Connecting to the VIP-4060

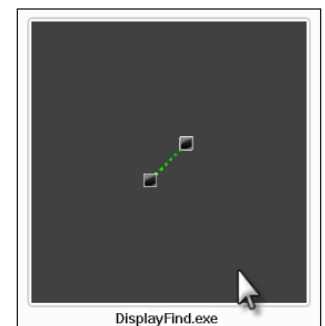
1. Download the DisplayFind application.
  - a. Navigate to **dakfiles.daktronics.com**.
  - b. Click **venus1500>Utils>DisplayFind>DisplayFind.exe**.
  - c. Click **Run** to download the program or **Save** to save the file for later use.
2. Launch DisplayFind by double-clicking the **DisplayFind** icon. Refer to **Figure 8**.
3. Connect to the display using the DisplayFind utility.
  - a. Select the appropriate **Network Adapter**.
  - b. Click **Find Displays** to detect displays. Refer to **Figure 9**.



**Figure 7:** Sensor Cable and Port



**Figure 9:** Daktronics Display Finder



**Figure 8:** DisplayFind Icon

- c. Click the desired display to launch the configuration utility within a web browser.

**Note:** If multiple displays are found, use the IP address or name to confirm the identity of the correct display.

## Installing Java® Software

If Java® software is not installed on the host machine, a notification will appear.

1. Click the **Java is not installed** notification.
2. Follow the instructions on the page to complete the installation.

The JavaScript® application must be enabled to use the VIP-4060 Configuration Utility. If the JavaScript® application is not enabled, follow the steps below to enable it on a specific web browser.

## Internet Explorer® Browser

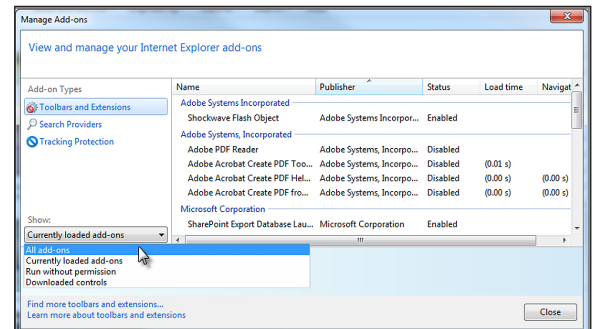
1. Select **Manage Add-ons** from the **Tools** menu drop-down list.
2. Click the drop-down arrow for the **Show** list and select **All add-ons**. Refer to **Figure 10**.
3. Navigate to **Oracle America, Inc** in the results window.
4. Select the line for **Java Plug-in 1.60\_xx** and click **Enable**. Refer to **Figure 11**.
5. Click **Close** to exit the window.

**Note:** Internet Explorer® browser must be restarted to apply the new settings.

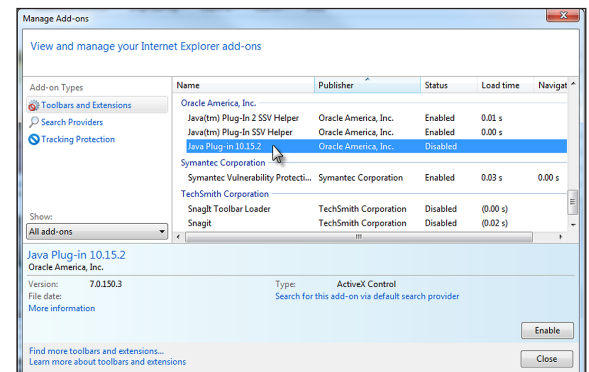
## Mozilla Firefox® Browser

1. Navigate to **Tools > Options** in the browser's drop-down list.
2. Click the **Content** tab in the **Options** dialog box.
3. Select the **Enable Java** box and the **Enable JavaScript** box. Refer to **Figure 12**.
4. Click **OK** and restart the internet browser.

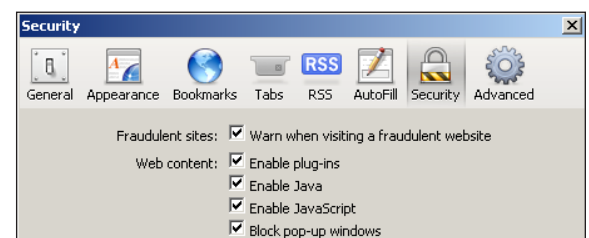
**Note:** The VIP-4060 Configuration Utility does not support the Apple® Safari® browser.



**Figure 10:** Java® Installation - Internet Explorer



**Figure 11:** Enable Java® Plug-In



**Figure 12:** Enable JavaScript® Application

## Installing Silverlight® Application

If the Silverlight® application is not installed on the host machine, the **Install Microsoft® Silverlight®** button will appear. Refer to **Figure 13**.

1. Click **Install Microsoft® Silverlight®** to open the download window.
2. Click **Run** and then **Install Now** in the dialog boxes to begin installation.
3. Click **Close** in the final dialog box to complete installation.



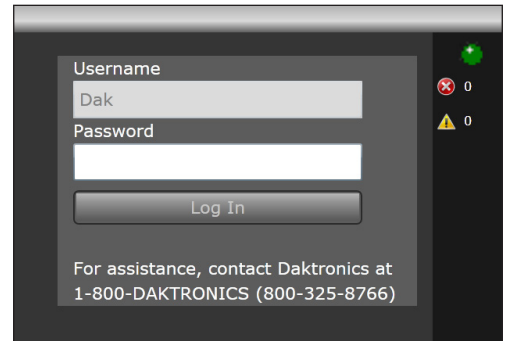
**Figure 13:** Silverlight® Installation Button

## Logging in to VIP-4060 System

1. Type **Dak** into the **Username** text box. Refer to **Figure 14**.
2. Click **Log In**. No password is required.

These are factory-configured login credentials. Daktronics strongly recommends adding a password after initial configuration.

Once a password is configured, the new password must be entered into the **Password** text box during login.



**Figure 14:** System Login Prompt

**Note:** Do not lose the password; losing it requires a service call.

## System Configuration

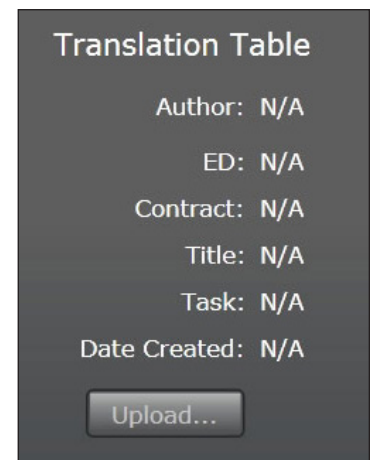
### Configuring the Display

The translation table defines the internal types of display components as well as the internal wiring. This includes basic identifying information such as the table's author, ED number, contract, title, and task. Refer to **Figure 15**.

Contact Daktronics Technical Services before uploading a translation table.

1. Navigate to the **Configuration** tab and click the **Display** sub-tab.
2. Click **Upload** under **Translation Table**.
3. Browse to the translation table provided by the display installer.
4. Click **Open** to upload the file.

**Note:** Display output may be temporarily out of sync while the translation table is applied.

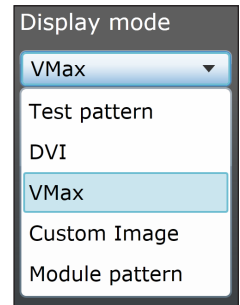


**Figure 15:** Display Translation Table

## Configuring Video

1. Navigate to the **Display Control** tab and click the **Display mode** sub-tab.
2. Select a video signal (**DVI**, **SDI**, or **VMax**) from the **Display mode** drop-down list. Refer to **Figure 16**.
3. Navigate to the **Source & Target** sub-tab and select **Source** to enter display area.

**Note:** Refer to the right side of the window for information about limits of the current video source.

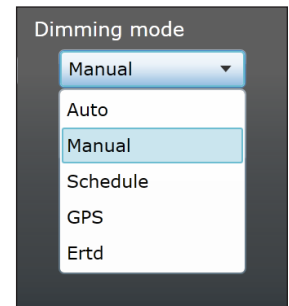


**Figure 16:** Video Signal Mode

## Adjusting Display

To adjust dimming, navigate to the **Display mode** sub-tab and choose an option from the **Dimming mode** drop-down list. Refer to **Figure 17**.

- **Auto** – dimming values adjust according to data received from a light sensor.
- **Manual** – dimming values are set at a constant level using a slider bar.
- **GPS** – dimming values are based on either a GPS sensor or configured GPS values.
- **Ertld** – dimming values are controlled via Enhanced Real Time Data (ERTD) scripts.
- **VMax** – dimming is controlled by a DMP-7000 or VIP-4400/4500.



**Figure 17:** Dimming Mode Adjustment

To adjust gamma, navigate to the **Configuration** tab and click the **Content** sub-tab. Use the slider bar to select the preferred **Gamma** value.

To adjust brightness, contrast, hue, and saturation, navigate to the **Display** tab and then to the **Color Adjustments** sub-tab. Use the respective slider bars to select the preferred values for each adjustment.

## Configuring Backup

To clone configuration files and the translation table, follow these steps:

1. Click the **Backup Display Configuration** icon. Refer to **Figure 18**.
2. Choose a location to save the file.
3. Type a name for the file in the **File Name** text box.
4. Click **Save**.



**Figure 18:** Display Configuration Icons

To load a stored configuration, follow these steps:

1. Click the **Load Display Configuration Backup** icon. Refer to **Figure 18**.
2. Navigate to the file's storage location.
3. Select the file and click **Open** to reload the configuration.

## Contact Info and Where to Get Help

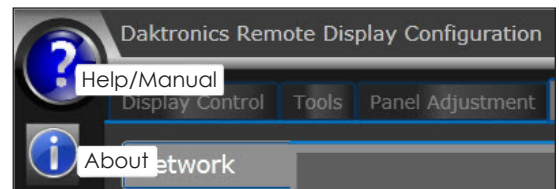
Access the VIP-4060 Operator's Manual via the blue question mark button in the top-left corner of the configuration utility screen. Refer to **Figure 19**. If further assistance is required, Daktronics Customer Service is also available 24/7 via phone or online. Refer to **Figure 20**.

### Telephone

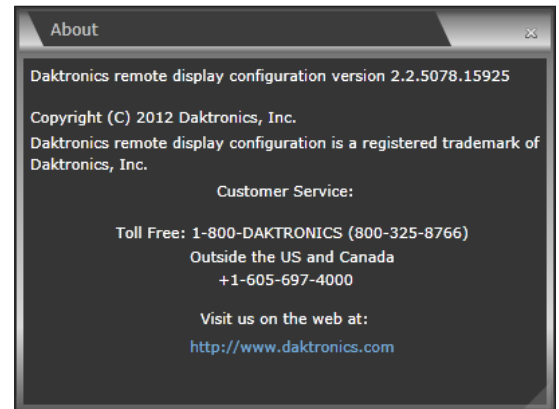
- Domestic (U.S. and Canada): 1-800-325-8766
- International: +1-605-275-1040

### Online

- [www.daktronics.com/support](http://www.daktronics.com/support)



**Figure 19:** Help Icons



**Figure 20:** Contact Information