



DIGITAL DISPLAY SOLUTIONS

BUSINESS & COMMUNITY APPLICATIONS

2022

- 1 **Why Work with Daktronics**
- 2 **Sign Company Resources**
- 4 **Customer Support**
- 6 **Proudly American**
- 7 **Reliability**
- 8 **Our Components**
- 9 **Color Depth & Viewing Distance**
- 10 **Complete Digital Solution**
- 12 **Indoor Digital Signage**
- 14 **Venus® Control Suite Software**
Control software accessible from any device for any user of indoor and outdoor, LED and LCD displays
- 16 **Galaxy® Display Communication**
- 18 **Galaxy GT6x Series Displays**
High-resolution full-color displays with surface-mount LEDs for ultra-sharp text, graphics, and animations
- 20 **GT6x 6 mm Outdoor RGB**
- 22 **GT6x 8 mm Outdoor RGB**
- 24 **GT6x 10 mm Outdoor RGB**
- 26 **Galaxy GS6 Series Displays**
Full-color or monochrome LED signs capable of showing text, graphics, and animations
- 28 **GS6 15.85 mm Monochrome & RGB**
- 30 **GS6 19.8 mm Monochrome & RGB**
- 32 **Galaxy eCCB Series Displays**
Text-only, red LED display that installs into a copy board structure
- 33 **eCCB 19.8 mm Monochrome**
- 34 **DataTime® Time & Temperature Displays**
LED time & temperature displays
- 35 **Fuelight™ Series Displays**
LED digit displays designed for the petroleum market
- 36 **Petroleum Display Communication**
- 38 **FL-3000 Petroleum Price Displays**
- 39 **FL-4500 Petroleum Price Displays**
- 40 **FLW-3000 Window Price Displays**
- 41 **Cash/Credit Displays**
- 42 **Sign Design Contest**
- 43 **Digital Photography Tips**



FEATURED INSTALLATION

2021 SIGN DESIGN CONTEST WINNER

Location:
Elite Automotive, Tallahassee, Florida

Sign Company:
Apogee Signs of Tallahassee, Florida

Display:
GT6x Series 180 lines x 360 columns 8mm RGB

Apogee Signs listened to their customer's vision and then helped them improve on it. They opted for a push-through acrylic logo cabinet with a digital sign under it. Daktronics provided a demonstration of their 8mm LED technology, which convinced the customer to upgrade their original plan to install a 15.85mm display.

Our Sales Expo 2021 attendees chose this sign project as the winner of the annual Sign Design Contest.

WHY WORK WITH DAKTRONICS?

You understand that great signage is a key marketing tool for businesses and organizations to be successful. When a digital sign is a part of that solution you'll want to ensure your customer uses a digital sign that enhances their brand and marketing efforts. Here are some key points to tell your customers why a Daktronics digital sign is the right choice:



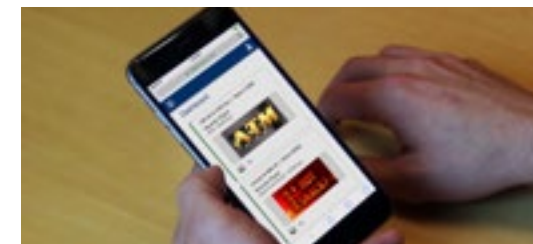
PREMIUM IMAGE QUALITY

Advertising success depends on dynamic images. A Daktronics display offers you outstanding image quality, not only on day one, but also five, eight and even 10 years down the road.



LONG-TERM PRODUCT QUALITY & RELIABILITY

A digital sign is a big investment, so you want a high-quality display. You expect your essential advertising medium to meet expectations throughout its lifetime.



EXCELLENT USER EXPERIENCE

Venus Control Suite software maximizes your digital displays. We designed this mobile-friendly, cloud-based software to control all your displays from any device.



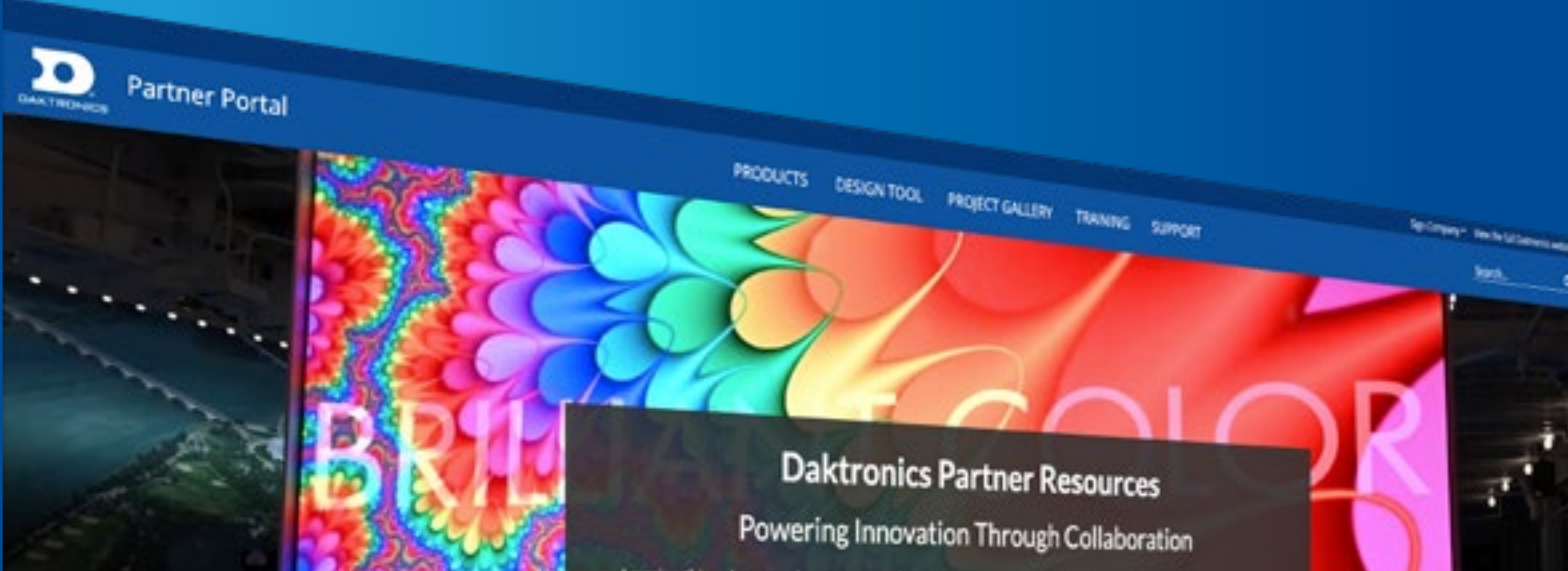
LOCAL PRESENCE

Every Daktronics digital sign has Daktronics expertise and reliability behind it. We also provide service and support through our regional service providers, so you can count on us throughout your signs' lifetime.



HISTORY OF SUCCESS

Daktronics was founded by two engineering professors in 1968 in Brookings, SD. From our humble beginnings, we became the undisputed world leader in designing and manufacturing digital signs of all shapes and sizes. We are passionate about taking care of our customers and making our digital signs look their best for everyone who sees them.



SALES & SERVICE RESOURCES

Daktronics is dedicated to helping our sign company partners succeed. That's why we created our Partner Portal at Partner.Daktronics.com – where you can find all your sales, service and marketing resources. Here are a few of the highlights you'll discover on our Partner Portal:



DESIGN A MESSAGE DISPLAY OR INDOOR VIDEO WALL
Create your own digital signs, based on location, functionality, mounting options and more. You can see what the signs will look like, check out related literature and even request a quote.

DESIGN A VENUE
Create an entire experience for your client. See where digital signage can make a real impact and see what works best for their venue. This interactive site can be an excellent selling tool for you!

GET A QUOTE
If you have an idea of what your project will entail, you can go straight to this site. Provide as much information as you can, and we'll help you with pricing.

REQUEST A DEMO
Want to close the sale? A demo will do it. Whether you visit our showroom at Daktronics headquarters or have us come to you for an on-site demo, this is a sure way to get your customers sold on Daktronics digital.

SIGN LEGISLATION ASSISTANCE
Municipal regulations and digital signage can work together very well. But sometimes you might need some help. We have people dedicated to helping you educate officials and alleviate concerns.

REQUEST SERVICE
Need some help? Whether you're checking on an order or in need of urgent technical assistance, this is your first stop.



Gain practical sales strategies at this annual, tuition-free seminar for sign companies. Also see new products, network with other professionals and tour the reliability lab.
DAKTRONICS.COM/SALESEXPO **SEPTEMBER 14-16, 2022**

MARKETING RESOURCES

CONTENT FOR YOUR WEBSITE
Promote Daktronics on your website by linking to the Daktronics site. Ask your sales representative about your options.

CUSTOMER STORIES
Exciting testimonials—how digital signs deliver success.
Daktronics.com/SuccessStories

PROJECT GALLERY
LED signs persuade and inform in a wide range of applications.
Daktronics.com/Photos

BUSINESS & COMMUNITY BLOG
Use this blog to supplement your own marketing efforts. Share posts on your site and through your social media channels.
Blog.Daktronics.com

Follow Daktronics and share our content for a quick and easy way to supplement your own social media content.



BUILDING LIFELONG RELATIONSHIPS

No other LED display manufacturer has a better warranty and the financial stability to stand behind it.

“A quick conversation with Daktronics support and reviewing articles within the Knowledge Base site helped us... kudos to Daktronics and support for quickly identifying our problem so that we could continue to manage our campaigns.”

Darell Clark
Marketing Manager
Spirit of Alaska Federal Credit Union
Fairbanks, Alaska



We provide more resources, more channels to request service and more ways for customers to find the information they need.

MYSUPPORT

To create an account or access your account, visit Daktronics.com/MySupport

- › View open cases or create a new case
- › Check order and shipping status
- › View expected arrival time of your technician
- › Customize your service notifications to receive text or email updates

ONLINE SUPPORT

If you have any product questions, go to Daktronics.com/Support

- › Find resources to troubleshoot and resolve issues
- › Locate guides on maintenance and preventive care
- › Access all product manuals and how-to videos

LOCAL NETWORK OF SALES & SERVICE SUPPORT

Daktronics has a technician located nearby if you ever need help:

- › Network of 129 sales and more than 85 field service professionals
- › More than 300 technicians from approx. 100 factory-trained service partners

TECHNICAL PHONE SUPPORT

- › Toll-free 800-325-8766, 8 a.m.–5 p.m. customer local time Mon.–Fri.
- › Experienced technical professionals have the knowledge and resources to solve your problems quickly

SERVICE AGREEMENTS

- › Eliminate unexpected service event payments with fixed costs
- › Simplify paperwork by avoiding purchase order and invoice hassles
- › Determine a payment schedule that meets your budget

TECHNICAL TRAINING OPTIONS

- › Installation and service videos
- › Talk to your sales representative for training options



PROVIDING AN EFFORTLESS EXPERIENCE

We want to work with you to create happy, loyal customers. When it comes to service responsibility, you decide who will handle it—your company or Daktronics. There are advantages with each option.



OR




DAKTRONICS PROVIDES SERVICE TO YOUR CUSTOMERS

Packaging a Daktronics service agreement with the display sale boosts revenue and maximizes your customer's confidence. Choose us to provide service and enjoy freedom from financial risks, headaches and infrastructure costs.



YOU PROVIDE SERVICE TO YOUR CUSTOMERS

If your customers call Daktronics for service, we re-direct them back to you. Providing service for them is an ongoing revenue stream, and it will help build loyalty to your company, as well.

PRODUCT SUPPORT COMMITMENT

Daktronics provides the strongest product support assurance in the industry.

Our parts support plan ensures that parts replacement or repair will be available after the date of last production of the product for a set time frame, which may vary by product. Limited technical and onsite support continues to be available for customers working towards product replacement after the end of parts support.



MADE IN THE USA USING GLOBAL PARTS



CUSTOMERS EXPECT RELIABLE PRODUCTS

Click below to

PROUDLY AMERICAN

SINCE 1968



learn more about our process and where we assemble our products.

Daktronics manufacturing process start with the components and end with final assembly. We vet every supplier, test every component to its limits and beyond, and assemble our displays right here in the US.



Daktronics designs our display systems from the display to the software, and we source the best circuit boards, plastics, motherboards and power supplies. That means you consistently get the best, most reliable products.

WE RELY ON MORE THAN FIELD DATA

Our state-of-the-art product reliability lab provides our engineers and vendors the needed information to design and build tough products.

We use a wide variety of systems and testing equipment, some similar to those used by the automobile and aerospace industries.

We invite you to tour our lab in person or virtually at Daktronics.com/Reliability

SAFE, EFFICIENT & COMPLIANT

Daktronics Galaxy GS6 and GT6x products carry the UL Green Leaf symbol indicating compliance with a variety of energy efficiency requirements. Products with Energy Efficiency Certification must be UL listed and meet California Title 24 standard energy consumption.

Electromagnetic Compliance (EMC) testing on our products certifies that our electromagnetic interference (EMI) stays under the limits approved by the FCC. We design and qualify our products to meet these standards:

- › Safety: UL/cUL/ETL/CE
- › Emissions: FCC/CE

We've always been committed to reaching new milestones in safety, efficiency and compliance. Through research, design and testing in our reliability lab, we continue to refine our products prior to completing the certification process. We do all of this in hopes that you also work to meet these compliances and can list your signage packages under the same certifications.



INVESTING IN AUTOMATION

In these times of supply chain challenges, it's more important than ever to improve efficiencies. At Daktronics, we believe in finding new ways to reduce lead times so our customers can start putting their digital displays to work for them quickly. That's why we're investing in machinery and equipment in our factories to increase automation and improve capacity.

SUPPORT FOR LIFE

Daktronics ensures peak performance from your display system, from the first time your display fires up to the end of your display's life. Daktronics service engineering team analyzes product performance in the field and provides recommendations to improve existing products. This group also provides technical support to keep systems operating at peak performance levels for as long as possible, which results in a boost to our customers return on investment when choosing Daktronics.



ENVIRONMENTAL SIMULATOR

Entire displays are stress-tested before product release.



SHAKER TABLE

Vibration exposes components to mechanical shocks in all three dimensions.



HALT CLIMATE CHAMBER

Rapidly cycling through blistering heat & frigid cold checks displays' performance levels.



EMC CHAMBER

Radiated and conducted EMI/EMC measurements ensure regulatory compliance.



WATER INTRUSION

High-pressure water jets drench displays to ensure ingress protection validation.



SALT FOG

Salt solution and heat reveal displays' ability to run in coastal air.



YOUR IMAGE MATTERS

Do you know where your LED display comes from? It makes a big difference. It may be tempting to save money upfront by purchasing from an LED broker that uses hundreds of components from suppliers who promise "lower prices." But in the long run, purchasing a subpar digital display can lead to additional costs, lower image quality and even lost revenue.

MAKE SURE THE FUTURE REMAINS BRIGHT

COMPONENTS MATTER

The truth is, just about any digital display looks good on day one. But what about five, six, seven years later – and beyond? When you purchase from a supplier that uses cheaper components, your display may end up with varying degrees of brightness, color and image quality, which reflects poorly on you. That's not acceptable. The display modules shown below demonstrates this very well.



At Daktronics, we believe your display should look amazing for the life of the display, so we are committed to intelligent design practices. Our digital LED signs make every message stand out with high-contrast, true-to-life images, and we make sure you have access to replacement parts for your display's lifetime. The difference is obvious, as you can see.

IMAGE QUALITY FOR LIFE

When it comes to advertising, your image matters. The quality of every LED component makes a difference. The above image is from our Reliability Lab during a 10-year, 2,000-cycle test. Every component is the same except the LEDs that we tested. This photo was taken about an eighth of the way through the test, and the degradation of many of those lower quality LEDs was already drastic.



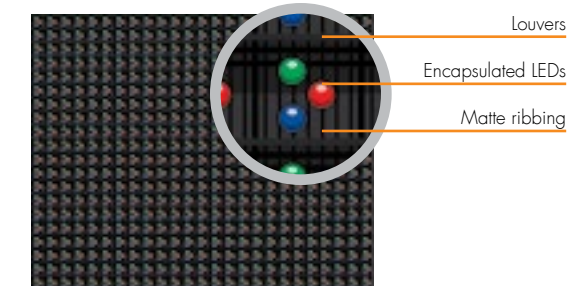
SEE THE DAKTRONICS DIFFERENCE

After five years of use, you can see the difference between the competitor's digital sign (left) and the Daktronics digital LED display. Our commitment to excellent production using quality components really makes a difference when it comes to lifetime image quality.



THE SCIENCE OF A DISPLAY'S VISUAL QUALITY

We integrate various features, procedures and processes, so you can offer your customers LED signs with premier image quality.



BRIGHTNESS & CONTRAST

LED displays with high contrast ratios show sharper, clearer, more effective images. "Contrast ratio" is the difference between an LED sign's full-on white brightness and the sign turned off with only ambient light reflection.

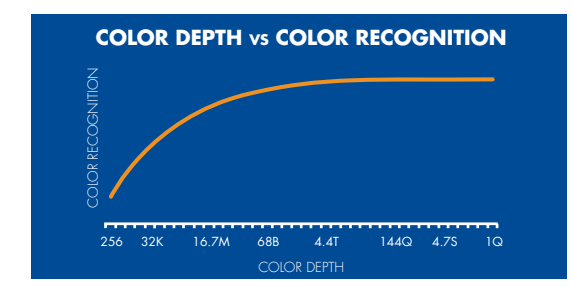
A high contrast ratio display shows crisper details and purer colors, especially in direct sunlight. We increase the darkness of the black state for a higher contrast ratio by using louvers with a black matte finish that encapsulate the LEDs. This reduces reflection and diffuses light to boost brightness levels while maintaining power efficiency.



MODULE CALIBRATION

Daktronics module calibration ensures your messages will look uniform throughout the display's entire lifetime.

First, we work with LED suppliers to buy color-consistent LEDs that are tightly binned and lot controlled. During production, we calibrate each individual module to match all other modules. We also adjust each module for consistent uniformity for the display's lifetime.



COLOR DEPTH

"Color depth" refers to the number of colors available to create an image. Generally, greater color depth results in higher-quality images. But a color depth of more than 16.7 million isn't needed for high-quality images.* The graph, left, shows how increasing color depth improves color recognition at a lower color depth, but at a higher depth, the color recognition improvement is negligible.

*Amit Dhir, The Digital Consumer Technology Handbook (New York: Xilinx, Inc., 2004), p. 171.

TEXT VIEWING RANGES (APPROXIMATE)

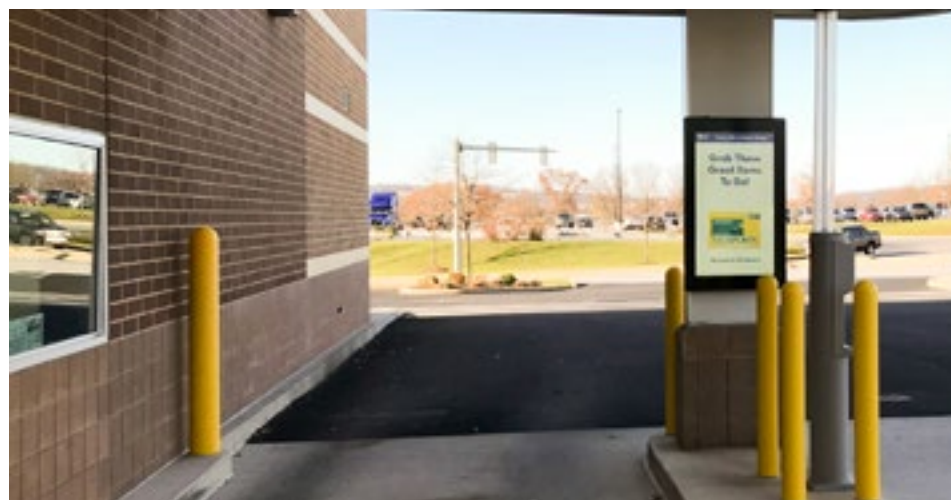
CHARACTER SIZE				MAX. VIEWING DISTANCE			
in	mm	ft	m	in	mm	ft	m
3	76	150	46	18	457	900	274
6	152	300	91	24	610	1,200	366
9	229	450	137	36	914	1,800	549
13	330	650	198	48	1,219	2,400	732

MINIMUM VIEWING DISTANCES

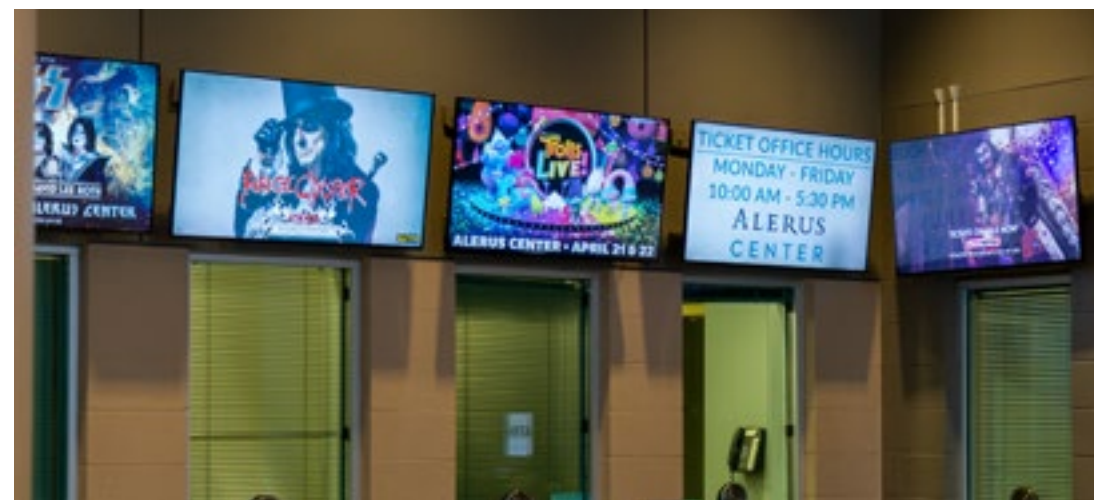
This table shows the correct character size based on viewing distance.

LINE SPACING	MIN. VIEWING DISTANCE
6.08 mm	13'
8.13 mm	18'
10.16 mm	21'
15.85 mm	37'
19.8 mm	45'

This table shows the distance at which the light from individual pixels blends together into a complete image.



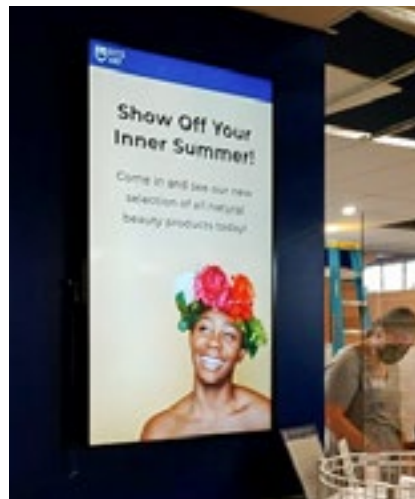
Today's consumers expect an engaging, dynamic experience wherever they are—from events to retail shops to worship services. Indoor and outdoor digital signage can provide an engaging atmosphere to communicate, educate and connect at every step of the customer journey.



The Alerus Center uses digital signage throughout their facility including outdoor marquees and wayfinding signs, and indoor concourse signage and meeting room boards. The digital signage boosts the guest experience and partner/advertising exposure. With one control software that can do it all, it's easy to keep advertising up to date, and keep guests informed.

The Alerus Center makes easy work of advertising and messaging with Venus Control Suite.

[See how by clicking here.](#)

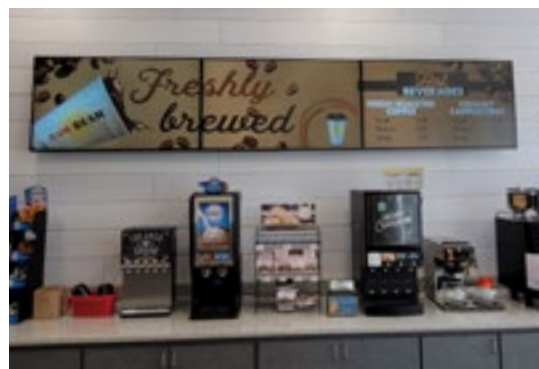


"We wanted one piece of software to be able to control the outside marquees, the concourse boards, our meeting room boards, wayfinding signage in the parking lot. One system that can do it all. So far in our time with using it, it has delivered as promised."

Derek Hoffert
Director of Partnerships
Alerus Center
Grand Forks, ND



Daktronics digital LCD displays are available for indoor and outdoor applications. They can enhance the entire customer experience. From menu boards to directories to video walls, LCD offers clear, interactive information, entertainment and engagement.



DIGITAL MENU BOARDS

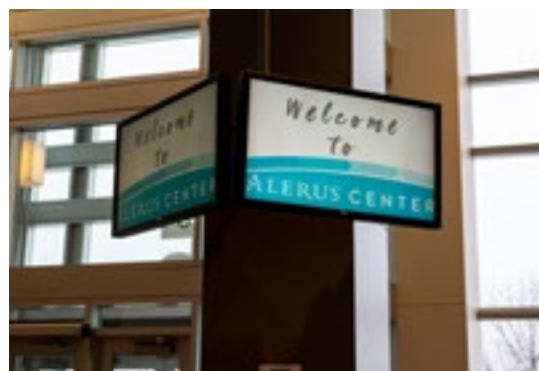
Images and graphics on digital LCD menu boards can trigger impulse buying, improve sales and shorten perceived wait times. Digital boards also simplify the operator experience, making changes quick and easy. Digital menu boards are ideal for restaurants, convenience stores and concession stands.



TOUCHSCREEN

A touchscreen provides a truly interactive experience, connecting with people at just the right time. It's ideal for wayfinding, entertaining, and even sales and events.

Schools can create a hall of fame, showcase athletes, musicians and teachers. Healthcare facilities can make it easy to find their way while spotlighting staff and generous donors. Shopping centers can provide store specials while enhancing the entire customer experience.



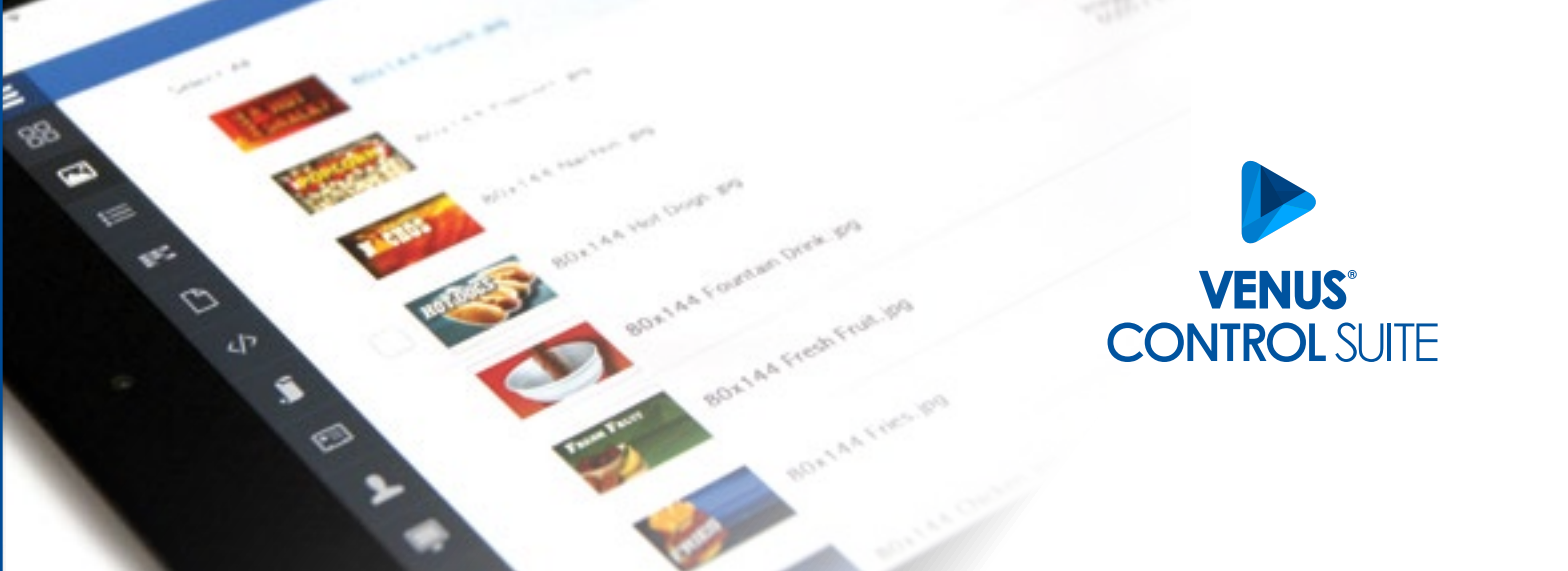
WAYFINDING & INFORMATION

Make sure everyone is heading in the right direction. Digital signage can connect visitors to businesses, schools, healthcare facilities and more. Facilities can use digital signs to help people find their way to the right place, deliver relevant messaging and advertising, and provide information in real time.



VIDEO WALLS

Digital LCD video walls can create an ambiance in any space. When a restaurant, financial institution, school or retail location wants to provide entertainment, advertising or information – while reducing perceived wait time and encouraging people to stay longer—a video wall is an excellent solution.



CONTROL ALL YOUR DISPLAYS FROM ANYWHERE

Venus Control Suite gives operators control over every display – indoor and outdoor, LED and LCD. This cloud-based control software combines functionality with an amazing user experience.

Operators at any level can control their displays from anywhere, at any time with an Internet-connected device. Venus Control Suite provides a simple mobile experience from a smartphone, tablet, or laptop. Operators can also choose to use a desktop computer at home or work to control all their displays.

Because Venus Control Suite is a cloud-based solution, it enables automatic software updates to provide the latest tools in the newest version.



FEATURES & BENEFITS

- DASHBOARD**
 - Check status and content of all displays
 - Use tags to sort and filter displays
- MEDIA LIBRARY**
 - Generate content with built-in web editor, Daktronics Content Studio or third-party software
 - Drag and drop content directly to media library and filter with tags
- DATA**
 - Display time and temperature or external data feeds
 - Update content automatically as data feeds change
 - Integrate a countdown of days until an event
 - Share tweets about your events from Twitter feeds

- SCHEDULING**
 - Create simple to sophisticated scheduling with playlists
 - Day part your content to target specific audiences
- REPORTS**
 - Proof of play reports keep record of content use
 - Scheduled content report shows what's scheduled for any display
- ACCOUNTS**
 - Manage displays and media through multiple accounts
 - Personalize individual user rights to features
 - Account hierarchy for multi-location display management and control
- ALERTS**
 - Integrated IPAWS (Integrated Public Alert & Warning System) Alerts from FEMA

VENUS CONTROL SUITE PACKAGES

There are several package levels to offer, based on the customer needs:

VENUS BASIC
This entry level package provides access to all the core features to manage outdoor LED signs.

- Galaxy displays

- Monitoring dashboard
- Content studio
- Media kit
- Online web editor
- Account hierarchy
- Public alerts
- Fullscreen playback
- Weather feed
- Content scheduling app
- Dimming control
- Account activity report

VENUS SELECT
This is the entry level package for customers with both LED and LCD displays.

- Galaxy displays
- LCD signage

- LCD support
- Email alerts
- Display control
- Content transitions
- Equipment audit reports

VENUS PROFESSIONAL
This level bundles all the advanced Venus features to control all LED and LCD displays in one comprehensive package.

- Galaxy displays
- Digital menu boards
- Video walls
- Billboards
- Large display networks
- Interactive touch displays

- Advanced reporting
- Layout editor
- Scheduled look changes
- Interactive kiosk support
- Ad grid scheduling
- Data studio lite
- Conditional scheduling

VENUS ENTERPRISE
This is the ultimate package for more advanced applications with point of sale integration features.

- Data driven digital menu boards & drive-thrus

- POS integration
- Data studio full

IMPORTABLE FILE TYPES

Video file types	.avi, .mpg, .mp4, .mov
Image file types	.png, .bmp, .gif, .jpg, .tif, .tiff, .psd
Data feed types	Time, Temp, RSS*, Atom*, .XML*

*Only on data capable displays.



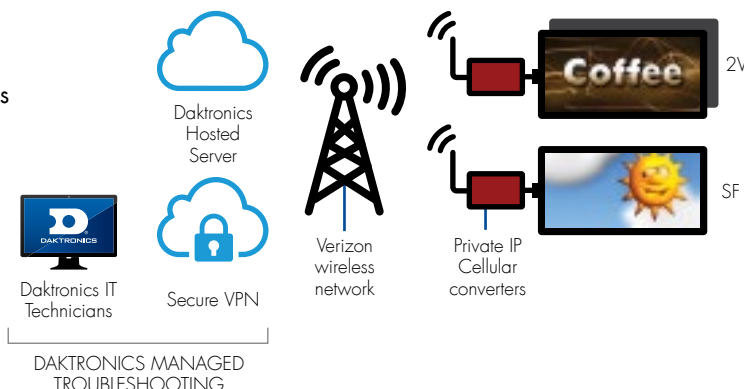
GALAXY GT6x & GS6 COMMUNICATION

The Galaxy GS6 and GT6x displays require an internet connection to reach out to the cloud-based Venus Control Suite for content and schedule updates. Daktronics offers several Ethernet-based communication options for internet access.

PERFORMANCE TRAITS	ETHERNET FIBER OPTIC	RECOMMENDED DAKTRONICS-VERIZON CELLULAR	CUSTOMER REMOTE CELLULAR	ETHERNET BRIDGE RADIO	ETHERNET WIRE
Max. distance from local network to display	1.2 miles	unlimited	unlimited	1,500 ft.	250 ft.
Reliability	best	better	better	good	good
Noise immunity	best	better	better	good	good
Data speed	best	better	better	good	best
Requires customer network with internet connection	yes	no	no	yes	yes
Immunity to firewall and network security concerns	no	yes	yes	no	no
Independent from company networks	no	yes	yes	no	no

DAKTRONICS-VERIZON LIFETIME DATA CELLULAR COMMUNICATION

- Secure data transfer with private IP modem
- Enjoy freedom from IT hassles or network security concerns
- Transfer content quicker with 4G data speed
- Lifetime 4G data means no monthly fees
- Use when there is not a Local Area Network or internet connection available on site
- Multiple data plans available
- Simplified communication setup reduces installation effort and costs

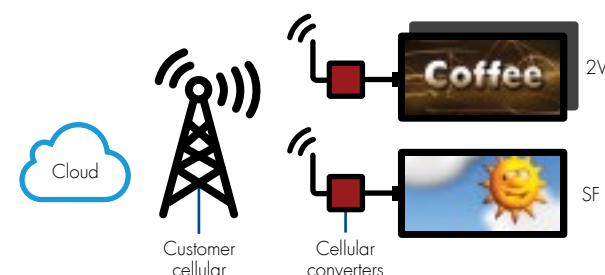


Note: Each display must be located in an adequate Verizon coverage area.

CUSTOMER-PROVIDED REMOTE CELLULAR

- Avoid customer's network by having the display connect directly via customer's cellular service
- Compatible with most 4G data providers
- Use when there is not a Local Area Network or internet connection available on site

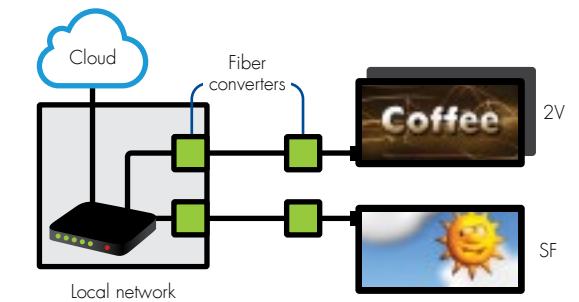
Note: Each display must be located in a reliable cellular signal area. This connection does require a cellular service.



ETHERNET FIBER OPTIC

Fiber Optic is the fastest and most reliable communication option offered. Electrically isolated fiber optics prevent damage due to electromagnetic interference from lightning or electrical storms.

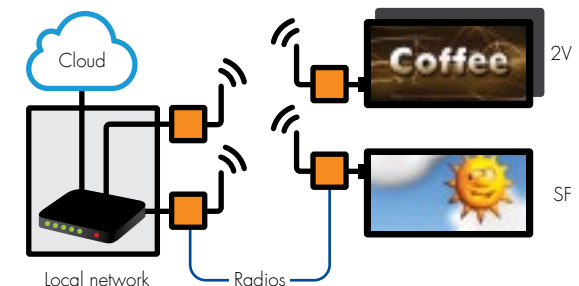
- Provides a fiber optic connection to Local Area Network for internet access
- Distance from the Ethernet network router to the display must be less than 6,547 feet (2,000 m)
- This option requires fiber-optic signal converters and multi-mode fiber-optic cables



ETHERNET BRIDGE RADIO

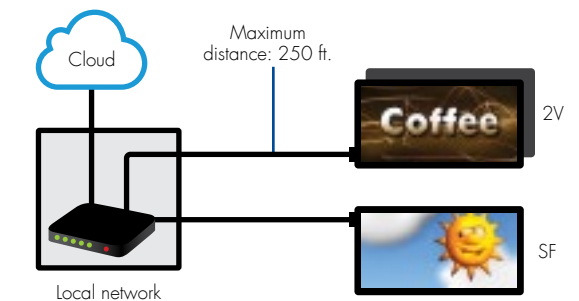
- Provides a wireless connection to Local Area Network for internet access
- Use this option when Ethernet Fiber cannot be pulled and the distance from the Ethernet network router to the display is less than 1,500 feet (450 m)
- This option requires outdoor installation for direct line of sight between server radio at the building and client radio at the display
- This option is not recommended where significant RF interference exists (RF interference could be caused by cellular towers, radio/TV stations, wireless headsets, etc.)

Note: Wireless communication devices may be affected by site-specific conditions. Daktronics does not guarantee that wireless communication is suitable for every location.



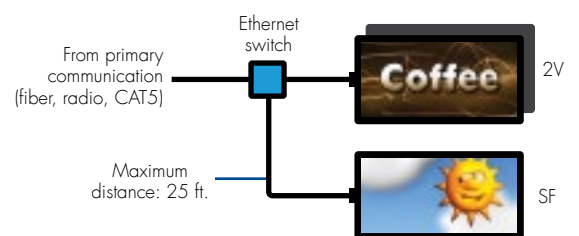
ETHERNET WIRE

- Provides a wired connection to Local Area Network for internet access
- Use when Ethernet Fiber cannot be pulled and the distance from the Ethernet network router to the display is less than 250 feet (76.2 m)



ETHERNET SWITCH

- Provides a single connection type to multiple displays from Ethernet Bridge Radio, Ethernet Fiber or Ethernet Wire
- Displays must be within 25 feet (7.62 m)
- This requires each display to have different IP addresses

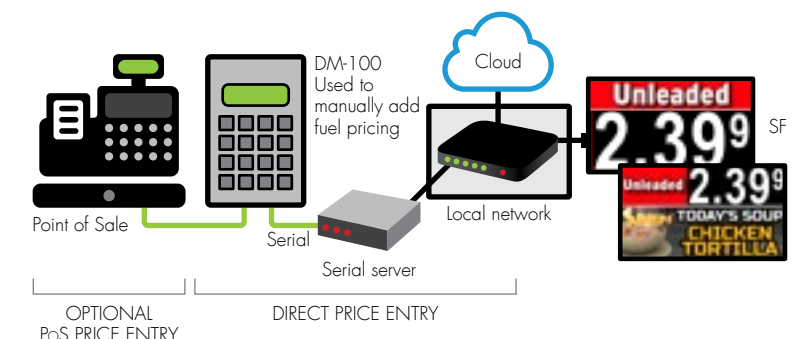


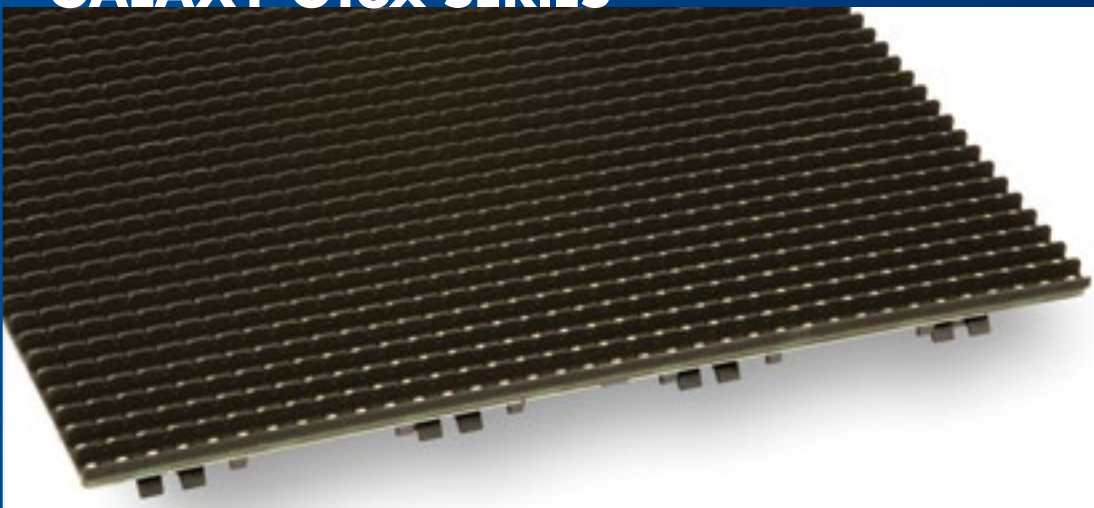
GALAXY FUEL PRICE DATA KIT

Share fuel prices and promotions on the same display at the same time with the Galaxy Fuel Price Data Kit.

- Store up to five fuel grades in the DM-100 handheld
- Change prices without accessing Venus Control Suite
- Update prices without an internet connection
- Use also with Ethernet Bridge Radio, Ethernet Fiber or Ethernet Wire to Local Area Network

Note: Not available with cellular.





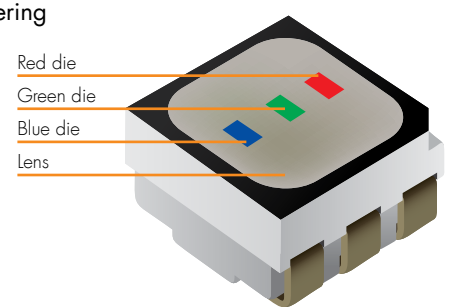
GALAXY GT6x

SURFACE MOUNT LEDS

SMD (surface mount device) refers to the LED lead frame mounting method. SMD LEDs are mounted to the surface of the circuit board, in contrast to through-hole LEDs, which are mounted with leads protruding through the circuit board.

BENEFITS OF SMD LEDS:

- › No color shift due to LED shouldering
- › Wider viewing angle
- › Higher degree of contrast compared to through-hole
- › Outstanding color blending at short viewing distances



Surface mount LED

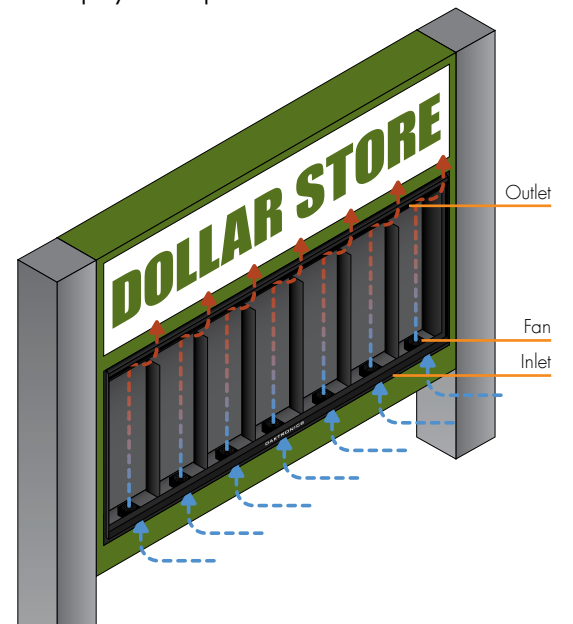
SIGNAL REDUNDANCY

Image data is sent to individual LED modules from multiple directions. If a signal path fails, the module continues to operate from the additional signal.



FRONT VENTILATION

The installer doesn't need to deal with special ventilation requirements. It's built in for display sizes up to 8 feet tall.



ALL SEALED COMPONENTS

Modules, power supplies, controller, power term panel, fan and all connections fully sealed.



QUICK CONNECTIONS

Simple plug-and-play signal connection. Along with an external junction box for easy power connection.



SINGLE-STEP MODULE REMOVAL

A single turn of the wrench removes the multi-point attached module.



MOUNTING CLIPS

Slotted clip angles in multiple locations allows adjustability in mounting.



Servpro Omaha, Nebraska
216 lines x 576 columns 10 mm RGB
GT6x series

The Galaxy GT6x provides bright, vibrant images through high-resolution surface mount LED technology in 10, 8 and 6 mm pixel pitches. Take advantage of industry-leading reliability, simple installation and unparalleled service you expect from Daktronics and the Galaxy line. End customers control their LED sign anywhere, anytime with cloud-based Venus Control Suite software.

FEATURE SET

- › Sealed components prevent corrosion
- › Signal redundancy minimizes message disruption
- › High-contrast louver design deflects ambient light, producing rich colors
- › Single section or large multi-sections for fast installation
- › Quick connects
- › Front ventilation on displays up to eight feet tall
- › No spreader beam required for displays greater than eight feet tall
- › Mounting clips
- › Single-step module removal
- › Shallow cabinet depth
- › Narrow cabinet borders

SERIES TECHNICAL SPECIFICATIONS

Estimated LED Lifetime	100,000+ hours
Contrast Enhancement	Non-reflective black louvers and module face grooves disperse light for rich colors
Content Capability	Text, graphics, logos, basic animation, video clips, data integration, multiple font styles and sizes
Control Software	Venus® Control Suite
Power	120/240 VAC single phase
Display Dimming	64 levels (automatic, scheduled or manual control)
Communication Options	Ethernet Fiber Optic, Ethernet Bridge Radio, Remote Cellular, Ethernet Wire
Operating Temperature	-40°F to 122°F with 99% RH non-condensing
Compliance Information	UL Listed, FCC compliant
Warranty Coverage	5 Years
Product Support	Parts support for a minimum of 10 years after end of production, see page 5 for details



Schulte Subaru Sioux Falls, South Dakota
270 lines x 450 columns 8 mm RGB
GT6x series

Black Hills Federal Credit Union Sioux Falls, South Dakota
216 lines x 216 columns 10 mm RGB
GT6x series





Hale Theatre Gilbert, Arizona
120 lines x 3120 columns 6 mm RGB

OUTDOOR GT6x 6 MM

The ultimate in image quality for clear, close viewing.



Eagle Theater Sugar Hill, Georgia
128 lines x 608 columns 6 mm RGB

- Single-section, Front-ventilated
- 7" deep formed cabinet
- Spare parts optional
- Installation Support optional

After calculating the physical space you want to fill, use this chart to determine the corresponding display size. Additional sizes are available as a special order. For square footage, refer to the specifications in the back of the catalog.

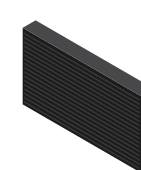
		DISPLAY WIDTH																		
cabinet dimensions		2'8"	3'11"	5'1"	6'3"	7'6"	8'8"	9'11"	11'1"	12'3"	13'6"	14'8"	15'11"	17'1"	18'3"	19'6"	20'8"	21'11"	23'1"	24'3"
active area dimensions		2'5"	3'8"	4'10"	6'0"	7'3"	8'5"	9'8"	10'10"	12'0"	13'3"	14'5"	15'8"	16'10"	18'0"	19'3"	20'5"	21'8"	22'10"	24'
matrix		120	180	240	300	360	420	480	540	600	660	720	780	840	900	960	1020	1080	1140	1200
DISPLAY HEIGHT	1'9"	1'3"	60																	
	2'11"	2'5"	120																	
	4'2"	3'8"	180																	
	5'4"	4'10"	240																	
	6'6"	6'0"	300																	
	7'9"	7'3"	360																	

TECHNICAL SPECIFICATIONS

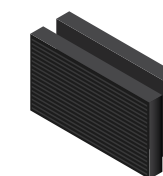
Character Height	2" (7 pixel font)
Line Spacing	6.08 mm (0.3")
Pixel Configuration	3-in-1 SMD
Maximum Brightness	8,000 nits
Color Capability	281 trillion colors
Optimal Viewing Angle	160 degrees horizontal x 70 degrees vertical
Min Viewing Distance	13'

DISPLAY CONFIGURATION

All sizes are available in single-face (SF) or two-view (2V) configurations.



Single-face (SF)
Available in all sizes



Two-view (2V)
Available in all sizes

MODEL NUMBER GUIDE

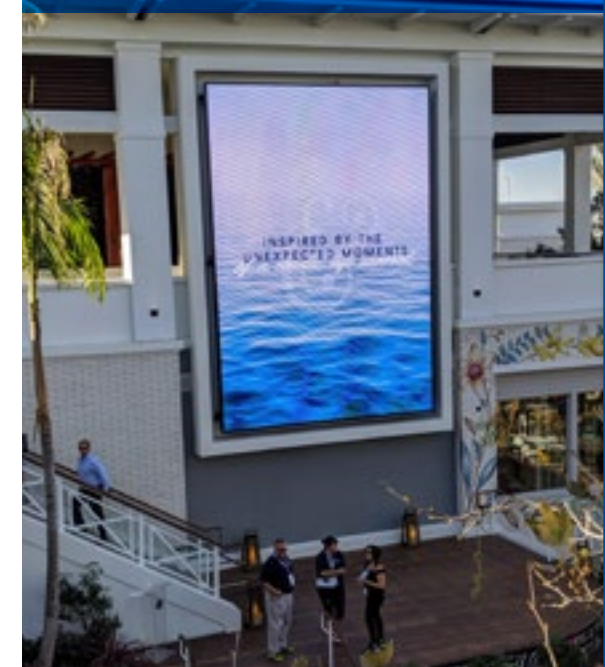
GT6x	-	120	x	180	-	6	-	RGB	-	2V
Series		Lines High		Columns Wide		Line Spacing		LED Color		Single Face or Two View



UNC Charlotte Charlotte, North Carolina
448 lines x 736 columns 6 mm RGB



CenterCal Properties Long Beach, California
1020 lines x 720 columns 6 mm RGB





Richmond Agency Jackson, Michigan
72 lines x 288 columns 10 mm RGB
GT6x series

OUTDOOR GT6x 10 MM

High pixel density creates quality images and video.



Gwinn's Tire Pros Easley, South Carolina
180 lines x 360 columns 10 mm RGB
GT6x series

After calculating the physical space you want to fill, use this chart to determine the corresponding display size. Additional sizes are available as a special order. For square footage, refer to the specifications in the back of the catalog.

- Single-section, Front-ventilated 7" deep formed cabinet
Spare parts optional
Installation Support optional
- Single-section, Rear-ventilated 11" deep extruded cabinet
Spare parts included
Installation Support optional
- Multi-section, Rear-ventilated 11" deep extruded cabinet
Spare parts included
Installation Support optional

cabinet dimensions	DISPLAY WIDTH																														
	matrix										matrix																				
	72	108	144	180	216	252	288	324	360	396	432	468	504	540	576	612	648	684	720	756	792	828	864	900	936	972	1008	1044	1080	1116	
1'9" x 1'3"	36																														
2'11" x 2'5"	72																														
4'2" x 3'8"	108																														
5'4" x 4'10"	144																														
6'6" x 6'0"	180																														
7'9" x 7'3"	216																														
8'11" x 8'5"	252			54"	66"	79"	8'11"	10'2"	11'4"	12'6"	13'9"	14'11"	16'2"	17'4"	18'6"	19'9"	20'11"	22'2"	23'4"	24'6"	25'9"	26'11"	28'2"	29'4"	30'6"	31'9"	32'11"	34'2"	35'4"	36'6"	37'9"
10'2" x 9'8"	288																														
11'4" x 10'10"	324																														
12'6" x 12'0"	360																														
13'9" x 13'3"	396																														
14'11" x 14'5"	432																														
16'2" x 15'8"	468																														
17'4" x 16'10"	504																														
18'6" x 18'0"	540																														
19'9" x 19'3"	576																														

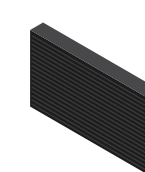
SIZES AVAILABLE AS SPECIAL ORDER

TECHNICAL SPECIFICATIONS

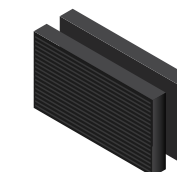
Character Height	2.8" (7 pixel font)
Line Spacing	10.16 mm (0.4")
Pixel Configuration	3-in-1 SMD
Maximum Brightness	8,000 nits
Color Capability	281 trillion colors
Optimal Viewing Angle	160 degrees horizontal x 70 degrees vertical
Min Viewing Distance	21'

DISPLAY CONFIGURATION

All sizes are available in single-face (SF) or two-view (2V) configurations.



Single-face (SF)
Available in all sizes



Two-view (2V)
Available in all sizes

MODEL NUMBER GUIDE

GT6x	-	72	x	108	-	10	-	RGB	-	2V
Series		Lines High		Columns Wide		Line Spacing		LED Color		Single Face or Two View



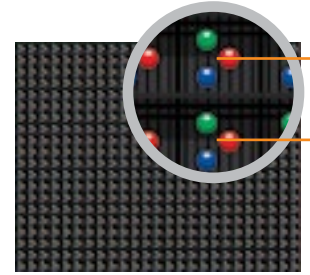
Calidonia Baptist Church Batesburg, South Carolina
60 lines x 150 columns 15.85 mm RGB
GS6 series

GALAXY GS6

The full-feature, high-quality Galaxy GS6 provides users a display that runs outstanding graphics and animations using the best contrast in the industry.

SIGNAL REDUNDANCY

Image data is sent to individual LED modules from multiple directions. If a signal path fails, the module continues to operate from the additional signal.



HIGHER RESOLUTION

A true 15.85 millimeter pixel spacing allows more pixels per module resulting in higher resolution.



ALL SEALED COMPONENTS

Modules, power supplies, controller, power term panel, fan, and all connections are fully sealed.



QUICK CONNECTIONS

Simple plug-and-play signal connection with an external junction box for easy power connection.



SINGLE-STEP MODULE REMOVAL

A single turn of the wrench removes the multi-point attached module.



MOUNTING CLIPS

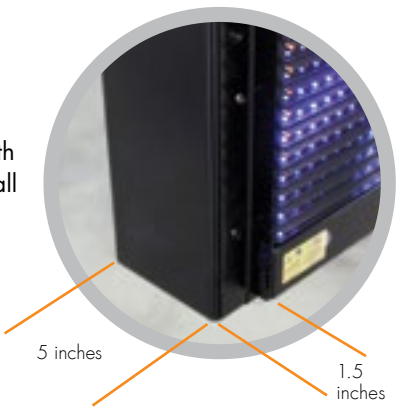
Slotted clip angles in multiple locations allows adjustability in mounting.



Fashion Furniture Fresno, California
60 lines x 375 columns 15.85 mm RGB
GS6 series

IMPROVED, CLEAN CABINET APPEARANCE

- › Narrow cabinet borders
- › Shallow five-inch cabinet depth on displays up to seven feet tall

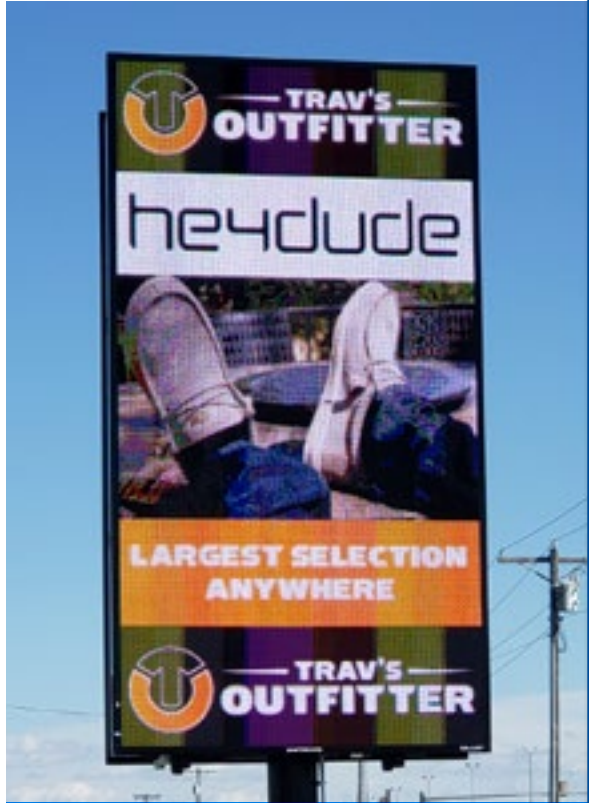


FEATURE SET

- › All sealed components
- › Quick connects
- › Mounting clips
- › High-contrast louvers
- › Redundant module signal
- › Large sections for fast installation
- › Front ventilation on displays less than seven feet tall
- › No spreader beam required for displays greater than seven feet tall
- › Same module size and cabinet size for all pixel pitches

SERIES TECHNICAL SPECIFICATIONS

Estimated LED Lifetime	100,000+ hours
Contrast Enhancement	Non-reflective black louvers and module face grooves disperse light
Message Capability	Text, graphics, logos, basic animation, video clips, data integration, multiple font styles and sizes
Control Software	Venus® Control Suite
Power	120, 120/240 VAC single phase
Display Dimming	64 levels (automatic, scheduled or manual control)
Communication Options	Ethernet Fiber Optic, Ethernet Bridge Radio, Remote Cellular, Ethernet Wire
Operating Temperature	-40°F to 120°F with 99% RH non-condensing
Compliance Information	UL and cUL Listed, UL-Energy Verified, FCC compliant
Warranty Coverage	5 Years
Product Support	Parts support for a minimum of 10 years after end of production, see page 5 for details



Trav's Outfitter Watertown, South Dakota
420 lines x 225 columns 15.85 mm RGB
GC6 series

Farmers Merchants State Bank Fort Wayne, Indiana
40 lines x 150 columns 15.85 mm RGB
GS6 series





GS6 15.85 MM MONOCHROME & COLOR

Display with the highest brightness for a wide range of roadside applications.

After calculating the physical space you want to fill, use this chart to determine the corresponding display size. Additional sizes are available as a special order. For square footage, refer to the specifications in the back of the catalog.

DISPLAY CONFIGURATION

All sizes are available in single-face (SF) or two-view (2V) configurations.

Single-section, Front-ventilated 5" deep formed cabinet
Monochrome spare parts optional
RGB spare parts optional
Installation Support optional

Single-section, Rear-ventilated 11" deep extruded cabinet
Monochrome sizes not available
RGB spare parts included
Installation Support optional

Multi-section, Rear-ventilated 11" deep extruded cabinet
Monochrome sizes not available
RGB spare parts included
Installation Support optional

House of Imports Buena Park, California
240 lines x 450 columns 15.85 mm RGB
GS6 series

Charles H Wilson Park Torrance, California
100 lines x 225 columns 15.85 mm RGB
GS6 series

DISPLAY HEIGHT	cabinet dimensions		DISPLAY WIDTH																																	
	active area dimensions	matrix	SIZES AVAILABLE AS RGB & MONOCHROME												SIZES AVAILABLE AS SPECIAL ORDER																					
			4'2"	5'6"	6'9"	8'1"	9'5"	10'8"	12'0"	13'3"	14'7"	15'11"	17'2"	18'6"	19'9"	21'1"	22'5"	23'8"	25'0"	26'3"	27'7"	28'11"	30'2"	31'6"	32'9"	34'1"	35'5"	36'8"	38'0"	39'3"	40'7"	41'11"	43'2"			
1'7"	1'1"	20	75	100	125	150	175	200	225	250	275	300	325	350	375	400	425	450	475	500	525	550	575	600	625	650	675	700	725	750	775	800	825			
2'7"	2'1"	40																																		
3'8"	3'2"	60																																		
4'8"	4'2"	80																																		
5'9"	5'3"	100																																		
6'9"	6'3"	120																																		
7'10"	7'4"	140		5'9"	7'0"	8'4"	9'8"	10'11"	12'3"	13'6"	14'10"	16'2"	17'5"	18'9"	20'0"	21'4"	22'8"	23'11"	25'3"	26'6"	27'10"	29'2"	30'5"	31'9"	33'0"	34'4"	35'8"	36'11"	38'3"	39'6"	40'10"	42'2"	43'5"			
8'10"	8'4"	160																																		
9'11"	9'5"	180																																		
10'11"	10'5"	200																																		
12'0"	11'6"	220																																		
13'0"	12'6"	240																																		
14'1"	13'7"	260																																		
15'1"	14'7"	280																																		
16'2"	15'8"	300																																		
17'2"	16'8"	320																																		
18'3"	17'9"	340																																		
19'3"	18'9"	360																																		

TECHNICAL SPECIFICATIONS

Character Height	4.4" (7 pixel font)
Line Spacing	15.85 mm (0.62")
Pixel Configuration	Monochrome: 1 red or 1 amber RGB: 1 red, 1 green, 1 blue
Maximum Brightness	Monochrome red: 4,500 nits Monochrome amber: 6,000 nits RGB: 12,000 nits
Monochrome Color Capability	4,096 shades of red or amber
Full Color Capability	281 trillion colors
Optimal Viewing Angle	140 degrees horizontal x 70 degrees vertical
Readability Angle	160 degrees horizontal x 90 degrees vertical
Min Viewing Distance	37'



Single-face (SF)
Available in all sizes

Two-view (2V)
Available in all sizes

MODEL NUMBER GUIDE

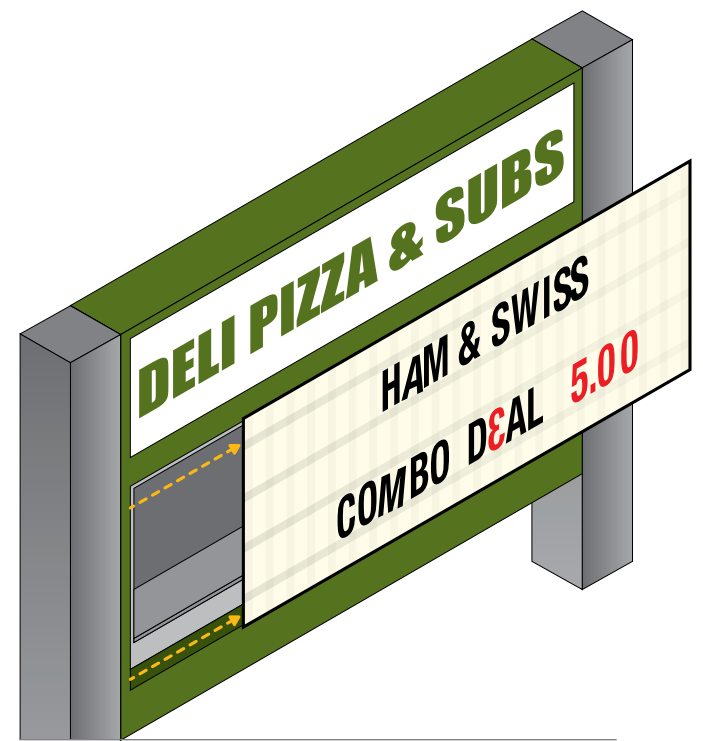
GS6 - 100 x 250 - 15.85 - RGB - SF

Series Lines High Columns Wide Line Spacing LED Color (Red, Amber, or RGB) Single Face or Two View



South Hopkins Middle School Nortonville, Kentucky
48 lines x 100 columns 19.8 mm red eCCB series

**GALAXY®
ECCB**



The eCCB installs into a copyboard cabinet and runs on the power already in use for backlighting.



**GALAXY
ECCB**



**CONTROL FROM
A MOBILE DEVICE
WITH WI-FI ACCESS**

The Galaxy eCCB offers organizations a product that attracts more business than a manual changeable copy board. Users control the display from a Wi-Fi ready mobile device using a web browser.

FEATURE SET

- › Installs quickly into a copyboard cabinet
- › Simple control interface requires no set up or training
- › Use existing line power for backlit copyboard

SERIES TECHNICAL SPECIFICATIONS

Estimated LED Lifetime	100,000+ hours
Contrast Enhancement	Non-reflective black louvers and module face grooves disperse light
Graphic Capability	Fixed format text only; schedule up to 18 messages
Control Software	Web browser based interface
Control Device/Range	Popular smartphone and tablet devices; line of sight, 400-foot maximum
Cabinet Configuration	Front-ventilated single cabinet
Service Access	Front access
Power	120 VAC single phase
Display Dimming	64 levels (automatic or manual control)
Communication Options	Wi-Fi access point (no internet access)
Operating Temperature	-40°F to 120°F with 99% RH non-condensing
Compliance Information	UL and cUL Recognized, UL and cUL Classified, FCC compliant
Warranty Coverage	2 Years
Product Support	Parts support for a minimum of 7 years after end of production, see page 5 for details

Traditional changeable copy boards can be difficult to update, especially in bad weather, so messages often aren't as current as they should be. This restricts content to messages that are typically more generic.

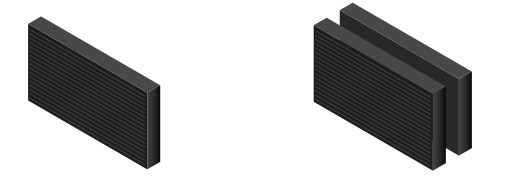
Facilities with existing changeable copy boards can now easily install a Galaxy eCCB display. The messages on the eCCB can be changed from inside the facility up to 400 feet away, no matter the weather conditions, day or night.

THIS AFFORDABLE DISPLAY OFFERS:

- Quick and easy message creation from a mobile phone or tablet (most Wi-Fi ready devices)
- Ability to post timely messages in any weather condition
- Basic scheduling
- Low cost of ownership
- Simplified installation

DISPLAY CONFIGURATION

All sizes are available in single-face (SF) or two-view (2V) configurations.



Single-face (SF) Available in all sizes
Two-view (2V) Available in all sizes



Southside Car Wash Aiken, South Carolina
32 lines x 100 columns 19.8 mm red eCCB series

MODEL NUMBER GUIDE

eCCB	- A100	- 3FT x 8FT	- 19.8	- R	- SF
Series	Generation	Height	Width	Line Spacing	LED Color
					Single Face or Two View

TECHNICAL SPECIFICATIONS

Lines of Text	1-4 lines of text depending on display size
Line Spacing	19.8 mm (0.78")
Pixel Configuration	1 red
Maximum Brightness	4,000 nits
Optimal Viewing Angle	140 degrees horizontal; 70 degrees vertical
Readability Angle	160 degrees horizontal; 90 degrees vertical

**eCCB A100
MODEL SPECIFICATIONS**

Sizes	Lines and Columns	Character Height	Number of Lines	Characters per Line
3' x 8'	32x100	10"-16.5"	1	6-8
			2	11-13
4' x 6'	48x80	11"-16.5"	1	4-6
			2	6-8
			3	8-10
4' x 8'	48x100	11"-16.5"	1	6-8
			2	8-10
			3	11-13
5' x 8'	64x100	12.5"-22"	1	4-6
			2	6-8
			3	8-10
5' x 10'	64x140	12.5"-22"	4	11-13
			1	7-8
			2	9-11
			3	12-14
			4	16-18

Specifications are approximate. Request a Daktronics shop drawing for precise specifications. For square footage, refer to the specifications in the back of the catalog.



Marconair Saint Leonard, Quebec
10-inch red digits
DF-1012



DF-1012 series in time mode

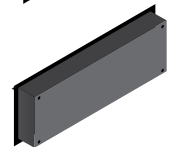
DF-1012 series in temp mode

DISPLAY CONFIGURATIONS

The 1012 Series is available in DI/SF configuration. Use as a single, one-sided display, or use two displays to show content on each side.



DI/SF Front
Available in all sizes



DI/SF Back
Nutserts on back allow for easy single-face rear mounting

MODEL NUMBER GUIDE

DF	-	1012	-	18	-	R	-	DI/SF
		Series Number		Character Height		LED Color		Drop-in/Single Face

DATATIME[®] TIME & TEMPERATURE

Provide an essential service and become a landmark with a DataTime Time and Temperature display.

FEATURE SET

- › Fully sealed water-tight digits
- › Front flange for drop-in mounting into existing signs
- › Nutserts in the back for rear mounting that enables the cabinet to stand alone

SERIES TECHNICAL SPECIFICATIONS

Optimal Viewing Angle	140 degrees horizontal x 70 degrees vertical
Color Capability	Red or amber
Digit Design	7-segment digits with only the LEDs protruding
Contrast Enhancement	LEDs protrude through a punched black metal face
Service Access	Front access
Power	120 VAC single phase
Display Dimming	16 levels (automatic or manual control)
Communication Options	DataTime Direct Wire Control Kit
Operating Temperature	-40°F to 120°F with 99% RH non-condensing
Compliance Information	UL Listed
Warranty Coverage	1 Year
Product Support	Parts support for a minimum of 7 years after end of production, see page 5 for details

DF-1012 DI/SF MODEL SPECIFICATIONS

Character Height	Single-face Cabinet Feet and Inches (H x W x D)	Single-face Cabinet Meters (H x W x D)	Single-face Weight Pounds (kg)	Max. Watts per face Red/Amber
10"	1'3" x 3'0" x 6"	0.39 x 0.92 x 0.14	25 (12)	90/90
13"	1'6" x 4'0" x 6"	0.46 x 1.22 x 0.14	30 (14)	100/100
18"	2'0" x 5'0" x 6"	0.61 x 1.53 x 0.14	45 (21)	130/130
24"	2'6" x 6'6" x 6"	0.77 x 1.99 x 0.14	60 (28)	180/180

Specifications are approximate. Request a Daktronics shop drawing for precise specifications.

FUELIGHT[™] PETROLEUM DISPLAYS

Advertise fuel prices and attract more customers.

Daktronics designs its comprehensive line of Fuelight price displays specifically for the petroleum industry with high-contrast, full-height, broad-stroke digits that provide clear and highly legible fuel prices. The displays feature energy-efficient LED technology with outstanding visibility and impressive viewing angles.

FEATURE SET

- › Fully sealed 360 degree water-tight components
- › Programmable digit font—configure tails of the 6 and 9 numerals, and the 9/10 segment style (The 9/10 segment style is not available in the 36" and 48" Fuelight display options.)

SERIES TECHNICAL SPECIFICATIONS

Optimal Viewing Angle	140 degrees horizontal x 70 degrees vertical
Color Capability	Red, amber, green or white*
Digit Design	7-segment digits with only the LEDs protruding
Cabinet Configuration	Flange mounted single cabinet or internal rear mounted multi-sectional cabinet
Contrast Enhancement	LEDs protrude through a punched black metal face
Service Access	Front access
Power	120 VAC single phase
Display Dimming	16 levels (automatic or manual control)
Communication Options	Wired, Wireless radio, Point-of-Sale interface, Wireless handheld key fob
Operating Temperature	-40°F to 120°F with 99% RH non-condensing
Compliance Information	UL Recognized, cUL Recognized
Warranty Coverage	2 Years
Product Support	Parts support for a minimum of 7 years after end of production, see page 5 for details

*White digits are available in FL-3000 series only. The lifespan of white LEDs, defined by their ability to maintain brightness, is shorter than that of red, green and amber LEDs.



Yesway Rapid City, South Dakota
3000 series, 16-inch, 18-inch red, green digits

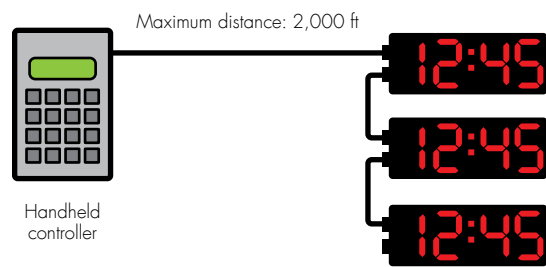
Wawa Jacksonville, Florida
3000 series, 30-inch red/green/white digits





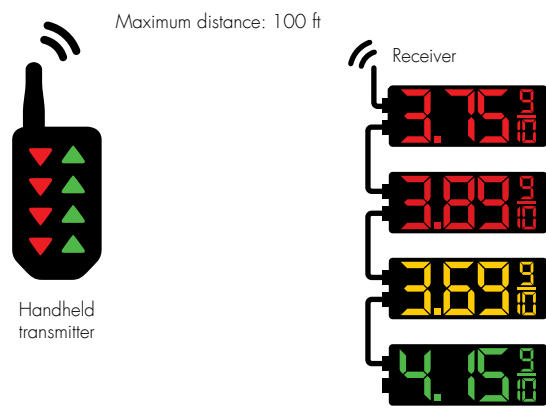
DATATIME & FUELIGHT

There are several communication methods available for Daktronics digit displays. DataTime® control kit runs DataTime Time and Temperature displays and Fuelink™ control kits control Fuelight™ petroleum price displays. The site requirements determine which option is best suited for the application.



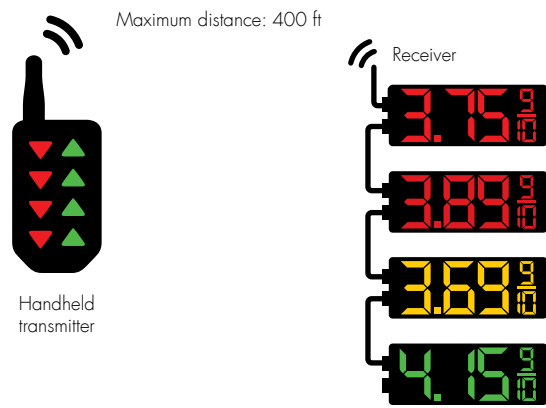
DATATIME DIRECT WIRE CONTROL KIT

- › Two options are available: indoor or outdoor direct wire
- › Components included with indoor or outdoor control kits: handheld controller, power pack, indoor or outdoor junction box with quick connect
- › Indoor kit does not include the signal wire from display to junction box (max 2,000 feet)



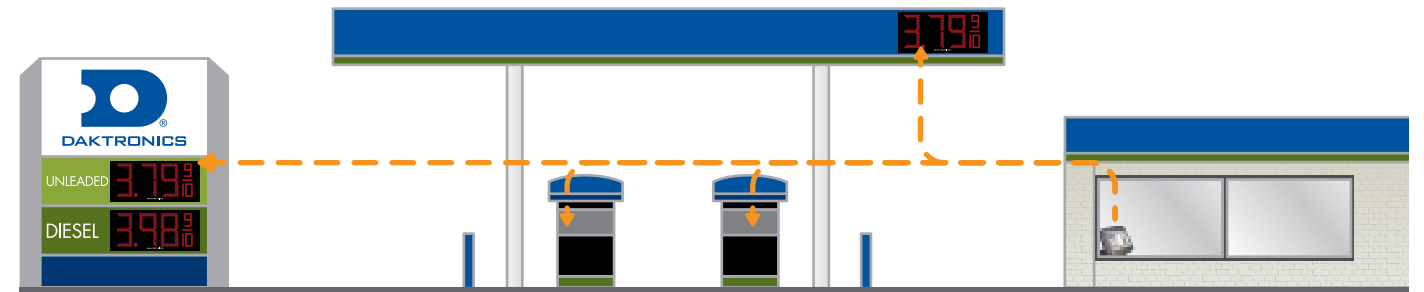
FUELINK RADIO 3-100 CONTROL KIT (FLR3-100)

- › Short range, 100-foot maximum, line of sight
- › 400 MHz frequency range with dipswitch security setting
- › Operates up to four individual product prices (Ex: Regular, Unleaded, E-85, Diesel)
- › Diagnostics, addressing and configuration features
- › Control kit with 8-button "key fob" transmitter and receiver radio
- › All signs on network hard wired to each other
- › Separate control kit required for each pylon



FUELINK RADIO 3-400 CONTROL KIT (FLR3-400)

- › Medium range, 400-foot maximum, line of sight
- › 400 MHz frequency range with dipswitch security setting
- › Operates up to four individual product prices
- › Diagnostics, addressing and configuration features
- › Control kit with 8-button "key fob" transmitter and receiver radio
- › All signs on network hard wired to each other
- › Separate control kit required for each pylon

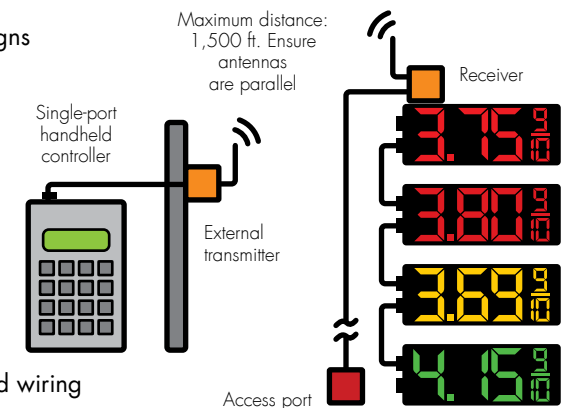


POINT-OF-SALE CONTROL KITS

- › Daktronics Fuelight and Cash/Credit displays interface with the leading Point-of-Sale (PoS) systems:
 - › Wayne
 - › VeriFone
 - › Radiant Systems
 - › Allied Electronics
 - › Gilbarco Veeder-Root
 - › Fiscal Systems
- › Central control of gas prices across a network of stores
- › Synchronized control of PoS with forecourt controller, pump and LED price signs

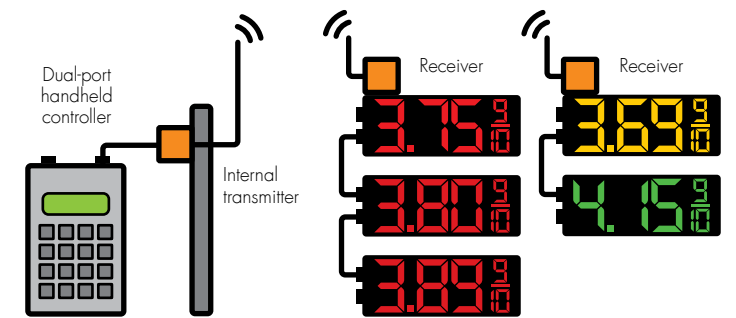
FUELINK RADIO 3-1500 CONTROL KIT (FLR3-1500)

- › Range up to 1,500 feet max; line of sight is required
- › Intended for single pylon installations
- › 2.4 GHz frequency range with pass code and frequency hopping security
- › Operates up to five individual fuel prices
- › Diagnostics, addressing, and configuration features
- › Control kit includes transmitter, single-port controller, receiver, access port and wiring



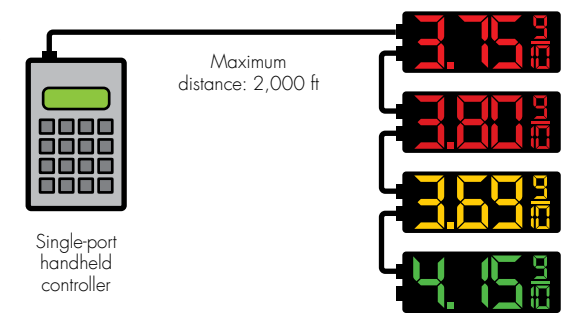
FUELINK RADIO CONTROL (FLXR4)

- › Long range; line of sight not required
- › Intended for multiple pylon installations, located on premise
- › 900 MHz frequency range with frequency hopping spread spectrum security
- › Operate up to five individual fuel prices
- › Allows 4 receivers max per radio transmitter
- › Parts ordered as needed: transmitter with dual-port controller, 1-4 receivers, access port, PoS integration kit



FUELINK DIRECT 3-2000 CONTROL KIT (FLD3-2000)

- › Components included for indoor or outdoor setup include: handheld controller, power pack, indoor and outdoor junction box with quick connect
- › Kit does not include the signal cable from display to junction box (max 2,000 feet). Signal cable must be 18-22 AWG, 2-twisted pairs, each individually shielded and outdoor rated.
- › Operates up to five individual product prices
- › Controls up to four separate pylons maximum
- › Diagnostic, addressing, and configuration features





Cenex Petro Serve Fargo, North Dakota
3000 series, 1.6-inch red, green digits
GT6x series, 180 lines x 270 columns 8 mm RGB

FL-3000

U.S.-based stores display fuel types and price per gallon.

FL-4500

Canadian-based stores display prices per liter.



Esso St. Peter's, Nova Scotia
4500 series, 1.6-inch red
GS6 series, 60 lines x 150 columns 15.85 mm RGB

FL-3000 DROP-IN MODEL SPECIFICATIONS

Model Number	Character Height	Drop-in Dimensions Ft-In (H x W)		Cut-out Dimensions Ft-In (H x W)		Drop-in Dimensions Meters (H x W)		Cut-out Dimensions Meters (H x W)		Drop-in Weight Pounds (kg)	Max.Watts Per Face
		A	B	C	D	A	B	C	D		
FL-3000-8-DI	8"	0'11"	2'3"	0'10"	2'2"	0.28	0.69	0.24	0.65	10 (5)	30
FL-3000-12-DI	12"	1'4"	2'11"	1'2"	2'9"	0.41	0.88	0.34	0.82	20 (9)	50
FL-3000-16-DI	16"	1'8"	3'8"	1'6"	3'6"	0.51	1.12	0.44	1.05	25 (11)	65
FL-3000-18-DI	18"	1'10"	4'1"	1'8"	3'11"	0.56	1.24	0.50	1.18	30 (14)	70
FL-3000-20-DI	20"	2'0"	4'8"	1'10"	4'4"	0.61	1.42	0.55	1.32	40 (18)	100
FL-3000-24-DI	24"	2'4"	5'3"	2'2"	5'1"	0.71	1.60	0.65	1.54	45 (20)	110
FL-3000-30-DI	30"	2'10"	5'8"	2'8"	5'6"	0.86	1.73	0.80	1.66	55 (25)	130
FL-3000-36-DI	36"	3'3"	6'11"	3'4"	7'0"	0.99	2.11	1.00	2.12	100 (45)	270
FL-3000-48-DI	48"	4'3"	9'4"	4'4"	9'5"	1.30	2.84	1.31	2.86	150 (68)	550

 Single-section, Front flange mounted  Multi-section, Inside rear mounted

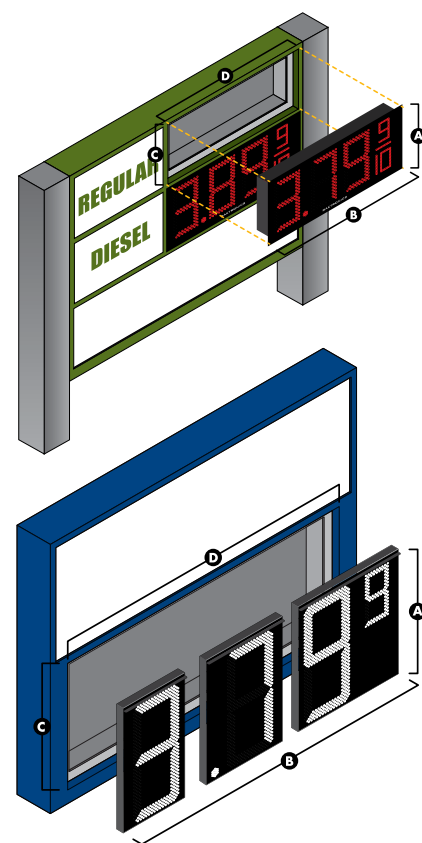
Several communication options are available. See the communications options on pages 36-37 or ask your sales representative for details. Cabinet depth is 3" (0.07 M). Specifications are approximate. Request a Daktronics shop drawing for precise specifications.

FL-4500 DROP-IN MODEL SPECIFICATIONS

Model Number	Character Height	Drop-in Dimensions Meters (H x W)		Cut-out Dimensions Meters (H x W)		Drop-in Dimensions Ft-In (H x W)		Cut-out Dimensions Ft-In (H x W)		Drop-in Weight Kilograms (lbs)	Max.Watts Per Face
		A	B	C	D	A	B	C	D		
FL-4500-8-DI	8"	0.28	0.71	0.24	0.67	0'11"	2'4"	0'10"	2'3"	5 (10)	30
FL-4500-12-DI	12"	0.41	0.91	0.34	0.85	1'4"	3'0"	1'2"	2'10"	9 (20)	50
FL-4500-16-DI	16"	0.51	1.14	0.44	1.08	1'8"	3'9"	1'6"	3'7"	11 (25)	65
FL-4500-18-DI	18"	0.56	1.32	0.50	1.26	1'10"	4'4"	1'8"	4'2"	14 (30)	70
FL-4500-24-DI	24"	0.71	1.60	0.65	1.54	2'4"	5'3"	2'2"	5'1"	20 (45)	110
FL-4500-30-DI	30"	0.86	1.91	0.80	1.84	2'10"	6'3"	2'8"	6'1"	25 (55)	130
FL-4500-36-DI	36"	0.99	2.31	1.00	2.32	3'3"	7'7"	3'4"	7'8"	45 (100)	270
FL-4500-48-DI	48"	1.30	3.20	1.31	3.21	4'3"	10'6"	4'4"	10'7"	77 (170)	550

 Single-section, Front flange mounted  Multi-section, Inside rear mounted

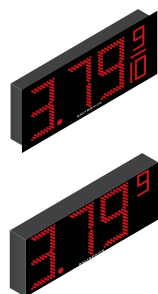
Several communication options are available. See the communications options on pages 36-37 or ask your sales representative for details. Cabinet depth is 0.07 M (3"). Specifications are approximate. Request a Daktronics shop drawing for precise specifications.



The 8"-30" drop-in with flange models drop into the cutout in the sign. The flange secures the drop-in display to the sign with mounting hardware.

DISPLAY CONFIGURATIONS

Drop-in style cabinet is designed to insert into a cutout or opening in a sign structure for easy installation.



DI with Flange
Available in 8"-30"

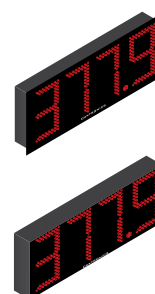
DI without Flange
Available in 36"-48"

MODEL NUMBER GUIDE

FL - 3000 - 16 - R - DI
Series Number Character Height LED Color Drop-in

DISPLAY CONFIGURATIONS

Drop-in style cabinet is designed to insert into a cutout or opening in a sign structure for easy installation.



DI with Flange
Available in 8"-30"

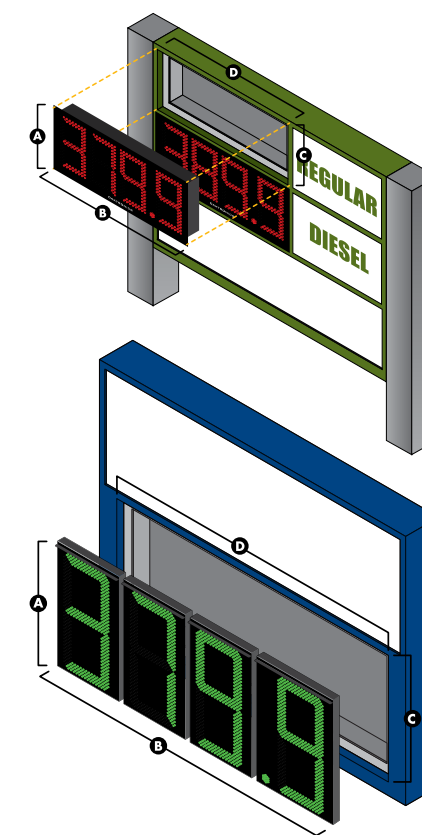
DI without Flange
Available in 36"-48"

MODEL NUMBER GUIDE

FL - 4500 - 16 - R - DI
Series Number Character Height LED Color Drop-in

The 8"-30" drop-in with flange models drop into the cutout in the sign. The flange secures the drop-in display to the sign with mounting hardware.

The 36"-48" drop-in without flange models drop into the built-in structure. Sections bolt together and attach to the sign structure through the inside rear of the display.





FLW-3000 5-inch red digits

FLW-3000

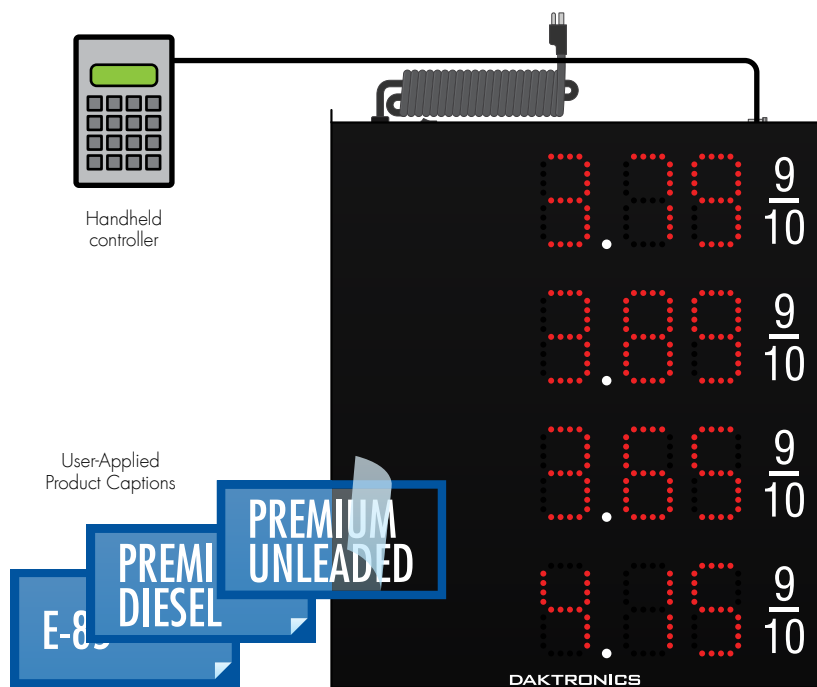
Convenience stores now have the ability to easily promote fuel in their window using the FLW-3000 LED digit display. Designed for a street-facing window, the product shows up to four fuel grades and prices.

FEATURE SET

- › Shows up to four fuel prices
- › Uses 5-inch, red LED digits
- › Operates as a single, stand-alone display or integrates into POS system
- › Plug and play power with no signal or wiring
- › Fuel grade caption area allows for printed lettering for easy set up or changes

TECHNICAL SPECIFICATIONS

Color Capability	Red
Digit Design	5" digits protrude through punched black metal face
Power	120V power cord
Cabinet Dimensions	29" H x 25" W x 3" D
Weight	20 lbs (9 kg)
Mounting	Hangs from window frame using chain connected to attachment points
Captions	User provides and applies captions to cabinet. Recommend adhesive vinyl.



User-Applied Product Captions

MODEL NUMBER GUIDE

FLW	-	3000	-	5	-	R	-	4	-	SF
Fuelight Window		Series Number		Character Height		LED Color		Number of Lines		Single Face

CASH/CREDIT

Daktronics Cash/Credit LED display is capable of showing multiple states of fuel prices that depend on the payment method, such as "CASH," "CREDIT," or "DEBIT." These highly visible displays install easily with simple control. They pair with FL-3000 and FL-4500 petroleum displays.

FEATURE SET

- › Fully sealed 360 degree water-tight components
- › Compatible with any size FL-3000 and FL-4500 petroleum display
- › Customized states are available upon request
- › Works with standard Fuelight control options and is compatible with PoS interfaces

SERIES TECHNICAL SPECIFICATIONS

Optimal Viewing Angle	140 degrees horizontal x 70 degrees vertical
Color Capability	Red, green, amber or white*
Contrast Enhancement	LEDs protrude through a punched black metal face
Service Access	Front access only
Power	120 VAC single phase
Display Dimming	16 levels (automatic or manual control)
Message Capability	Factory programmed states with non-changeable content, custom content available upon request
Communication Options	Wired, Wireless radio, Wireless handheld key fob
Operating Temperature	-40°F to 120°F with 99% RH non-condensing
Compliance Information	UL Recognized, cUL Recognized
Warranty Coverage	2 Years
Product Support	Parts support for a minimum of 7 years after end of production, see page 5 for details

*The lifespan of white LEDs, defined by their ability to maintain brightness, is shorter than that of red, green and amber LEDs.

CC1 DROP-IN MODEL SPECIFICATIONS

Model Number	Character Height	Drop-in Dimensions Ft-In (H x W)		Cut-out Dimensions Ft-In (H x W)		Drop-in Dimensions Meters (H x W)		Cut-out Dimensions Meters (H x W)		Drop-in Weight Pounds (kg)	Max.Watts Per Face
		A	B	C	D	A	B	C	D		
CC1-1H1W-DI	5"	0'8"	1'7"	0'7"	1'6"	0.20	0.47	0.16	0.44	10 (5)	20
CC1-2H2W-DI	5"-10"	1'1"	2'11"	1'0"	2'10"	0.32	0.88	0.29	0.85	20 (10)	65

Cabinet depth is 3" (0.07 M). Specifications are approximate. Request a Daktronics shop drawing for precise specifications.

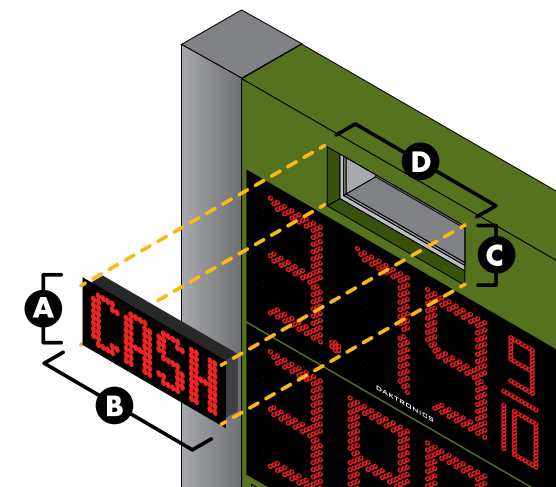


Coborn's Superstore Glencoe, Minnesota
3000 series, 24-inch red digits, 18-inch amber/green digits
CC1-2H-2W green



CC1-1H1W-R-DI (cash, credit, debit) CC1-2H2W-R-DI (cash, credit, debit)

The cash/credit displays drop into the cutout in the sign. The flange secures the drop-in display to the sign with mounting hardware.





Tri-County Communications Cooperative Strum, Wisconsin
GT6x Series 180 lines x 108 columns 10 mm RGB
La Crosse Sign Group



Battle Creek Public Schools Battle Creek, Nebraska
GT6x Series 108 lines x 216 columns 10 mm RGB
Love Signs



Faith Lutheran Church Tallahassee, Florida
GT6x Series 108 lines x 180 columns 10 mm RGB
Apogee Signs

SIGN DESIGN INSPIRATION

Like with any good project, inspiration exposes untapped potential. Here are some of our 2021 Sales Expo Sign Design Contest entries that are sure to spark some fresh ideas.



Village of Elkhorn Elkhorn, Manitoba
GT6x Series 108 lines x 216 columns 10 mm RGB
Cardinal Signs



City of Madison Madison, Minnesota
GS6 Series 80 lines x 175 columns 15.85 mm RGB
Quick Sign of Willmar

PHOTOGRAPH DIGITAL SIGNS LIKE A PRO

LED displays are difficult to capture in a photo. A few simple adjustments to your process or camera settings can help you capture a breathtaking photo.



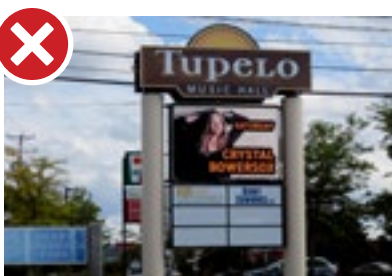
Getting a high-quality photo of a digital display can be tricky. But, showing off all your digital assets is worth the effort of breaking out the camera and adjusting some settings. Here are some important considerations:

TIMING AND LIGHTING

When venturing out to photograph your LED display, pay attention to these elements before for snapping some shots:



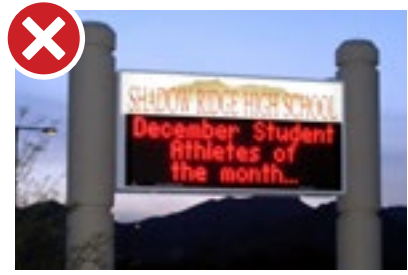
Weather conditions
Overcast skies darken the tone and overall mood. We recommend shooting the sunny side of the display at mid-morning or late afternoon.



Background
Vehicles, people, power lines, construction, or other objects in the background distracts from the signage.



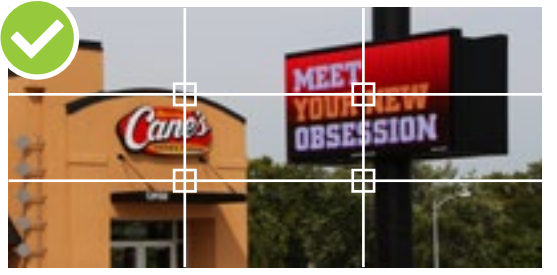
If your photos are plagued with tiling (visible LED modules) or moiré (those annoying wavy lines), try taking a step or two in any direction until it goes away. More tips for solving these issues can be found in the advanced section below.



Lighting Contrast
When shooting images at night or indoors, the extreme contrast between the dark surroundings and bright LEDs makes proper lighting difficult to achieve. Try turning the display to 15-20% brightness and put darker content on the screen.



Avoid Zooming
The zoom tool decreases clarity. If you want a tighter shot, physically move closer to the sign.



RULE OF THIRDS
Using the rule of thirds makes your content easier to look at and allows the photographer to fit both the LED display and a prominent landmark or building in the background.

National Association Member:



DAKTRONICS.COM 800-325-8766

Covers: Elite Automotive Tallahassee, Florida GT6x-180x360-8-RGB
201 Daktronics Drive PO Box 5128 Brookings, SD 57006-5128 fax 605-692-0381 email commercial@daktronics.com
DataTime®, Fuelight™, Fuelink™, Galaxy®, and Venus® are trademarks of Daktronics. All other marks are trademarks of their respective owners.
Copyright © 2022 Daktronics 3 January 2022
Printed in the USA