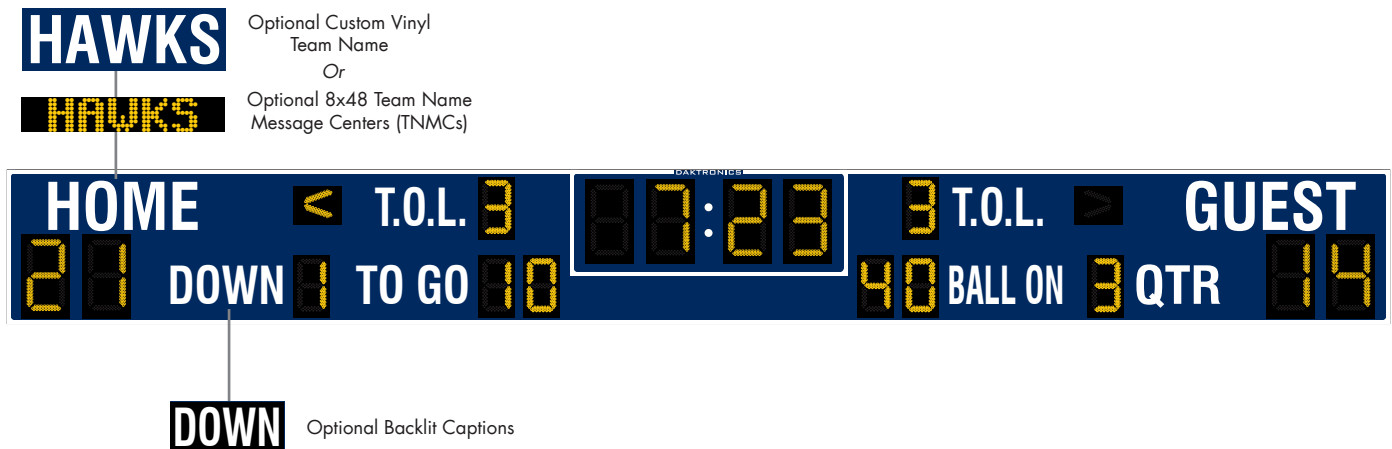


DAKTRONICS FB-2038 PRODUCT SPECIFICATIONS



This outdoor LED football scoreboard displays period time to 99:59, HOME and GUEST scores to 99, T.O.L. (time out left) to nine, and DOWN/TO GO/BALL ON/QTR (quarter) information. Arrows indicate possession. When period time is less than one minute, the scoreboard displays time to 1/10 of a second.

| DIMENSIONS | # OF SECTIONS |
|--|-------------------------|
| 4'-0" H x 36'-0" W x 8" D (1.22 m x 10.97 m x 203 mm) | Two Total |
| 4'-0" H x 18'-0" W x 8" D (1.22 m x 5.49 m x 203 mm) | One Left & One Right |

| | | VINYL CAPTIONS (STANDARD) | TNMCs & VINYL CAPTIONS | BACKLIT CAPTIONS |
|-----------------------------|------------------|------------------------------|---------------------------|------------------------|
| POWER (120 VAC)* | Red/Amber Digits | 250 Watts, 2.1 Amps | 350 Watts, 2.9 Amps | 470 Watts, 3.9 Amps |
| | White Digits | 540 Watts, 4.5 Amps | 770 Watts, 6.4 Amps | 760 Watts, 6.3 Amps |
| UNCRATED WEIGHT | Each Section | 288 lb (131 kg) | 348 lb (158 kg) | 380 lb (172 kg) |
| | Total | 576 lb (261 kg) | 696 lb (316 kg) | 760 lb (345 kg) |

*Scoreboard requires a dedicated circuit. Models with 240 VAC power at half the indicated amperage are also offered (International Use Only).

DIGITS & INDICATORS

- Clock and score digits are 24" (610 mm) high. All other digits are 18" (457 mm) high.
- Select red, amber, or white LED digits and indicators.
- Scoreboard features robust weather-sealed digits (see [DD2495646](#)).
- Digits may be dimmed for night viewing.

DISPLAY COLOR

Choose a color from the Daktronics standard paint book (see [SL-02730](#)).

CONSTRUCTION

Alcoa aluminum alloy 5052 for excellent corrosion resistance

PRODUCT SAFETY APPROVAL

ETL-listed to UL 48, tested to CSA standards, and CE-labeled

CAPTIONS & STRIPING

- HOME and GUEST captions are 15" (381 mm) high. All other captions are 12" (305 mm) high.
- Standard captions are vinyl, applied to the display face.
- Optional backlit captions consist of white letters on a black background. Team names are 14" (356 mm) high. All other captions are 12" (305 mm) high.
- Optional TNMCs are 10.6" (269 mm) high.
- Standard captions and border striping are white vinyl. Choose another vinyl color at no additional cost (see [DD2101644](#)).

OPERATING TEMPERATURES

- Display: -22° to 122° Fahrenheit (-30° to 50° Celsius)
- Console: 32° to 130° Fahrenheit (0° to 54° Celsius)

WWW.DAKTRONICS.COM E-MAIL: SALES@DAKTRONICS.COM

201 Daktronics Drive, PO Box 5128, Brookings, SD 57006
Phone: 1-800-325-8766 or 605-692-0200 Fax: 605-697-4746
DD4757195 012025 Page 1 of 8



DAKTRONICS FB-2038 PRODUCT SPECIFICATIONS

CONTROL CONSOLE

All Sport® 5000
(see [SL-03991](#))

CONTROL OPTIONS

Wireless: 2.4 GHz spread spectrum radios feature 64 non-interfering channels and 8 broadcast groups (see [SL-04370](#)). This is a popular upgrade.

Wired: Two-pair shielded cable of 22 AWG minimum is required. A cover plate with mounted connector and standard 2" x 4" x 2" (51 mm x 102 mm x 51 mm) outlet box is provided. Connector mates with signal cable from control console.

SEGMENT TIMER MODE

The segment timer mode is ideal for keeping practices on schedule. The horn at the end of a segment allows coaches and athletes to focus on the practice and to listen for the horn when it is time to change drills (see [SL-04004](#)).

TIME OF DAY MODE

This scoreboard features a Time of Day (TOD) mode that allows it to act as a clock when the control console is unplugged or off. Refer to the scoreboard installation manual for instructions on how to enable the Time of Day mode.

MOUNTING

Scoreboard is typically mounted on three vertical beams or poles. Hardware to mount scoreboard on three beams is included; hardware for more beams is at additional cost. Standard mounting uses I-beam clamps. Optional mounting method using angle brackets is also offered; maximum beam width is 12" (305 mm) and maximum beam depth is 22" (559 mm). Refer to attached drawings for more information on mounting methods.

SERVICE ACCESS

Digit panels and electronics are serviced from the front of the scoreboard.

GENERAL INFORMATION

Scoreboard provides scoring capabilities for two teams. 100% solid state electronics are housed in an all aluminum cabinet. Scoreboard is shipped in two sections. Scoreboard power is to be provided on a dedicated circuit to prevent loss of game information due to failure of another component on the circuit. Specifications and pricing are subject to change without notice.

ADVERTISING/IDENTIFICATION PANELS

Backlit & Non-Backlit:

- 1'-6" H x 36'-0" W (457 mm x 10.97 m)
- 2'-0" H x 36'-0" W (610 mm x 10.97 m)
- 2'-6" H x 36'-0" W (762 mm x 10.97 m)
- 3'-0" H x 36'-0" W (914 mm x 10.97 m)
- 4'-0" H x 36'-0" W (1.22 m x 10.97 m)
- 5'-0" H x 36'-0" W (1.52 m x 10.97 m)

For additional non-backlit panel sizes, see [SL-03761](#).

FAN FAVORITE OPTIONS

These are the most commonly requested enhancements:

- Custom vinyl team name caption in place of HOME *or* Two Digital Team Name Message Centers (TNMCs) in place of HOME and GUEST captions (see [DD1696958](#))
or Backlit team name captions
- Horn

OTHER ACCESSORIES & UPGRADES

The options below are available for additional customization:

- Backlit captions
- Lacrosse/field hockey and soccer captions on changeable panels
- LED colon
- Individual digit protective screens (see [SL-04939](#))
- Protective netting (see [DD2690927](#))
- Angle bracket mounting method

COMPLETE YOUR SYSTEM

Contact Daktronics about adding any of this equipment to create a unique scoring and display system:

- Advertising/identification panels
- Decorative accents
- Play clocks (Delay of game timers)
- Sportsound® Audio
- Video displays
- Live web streaming of scores and stats

FOR ADDITIONAL INFORMATION

- Installation Specifications: DWG-1189181 (attached)
- Standard I-beam Mounting: DWG-1052565 (attached)
- LVX I-Beam Mounting: DWG-3918361 (attached)
- Optional Pole Mounting: DWG-1048184 (attached)
- Component Locations: DWG-4975621 (attached)
- Architectural Specifications: See [DD4757194](#)

DAKTRONICS FB-2038 PRODUCT SPECIFICATIONS

ALTERNATE CAPTIONS & SCORING MODES



Segment Timer Mode



Football Mode –
vinyl and backlit captions shown



Standalone Time of Day Mode



Football Mode –
Optional TNMCs shown



Soccer Mode –
vinyl and backlit captions shown



Lacrosse/Field Hockey Mode –
vinyl and backlit captions shown



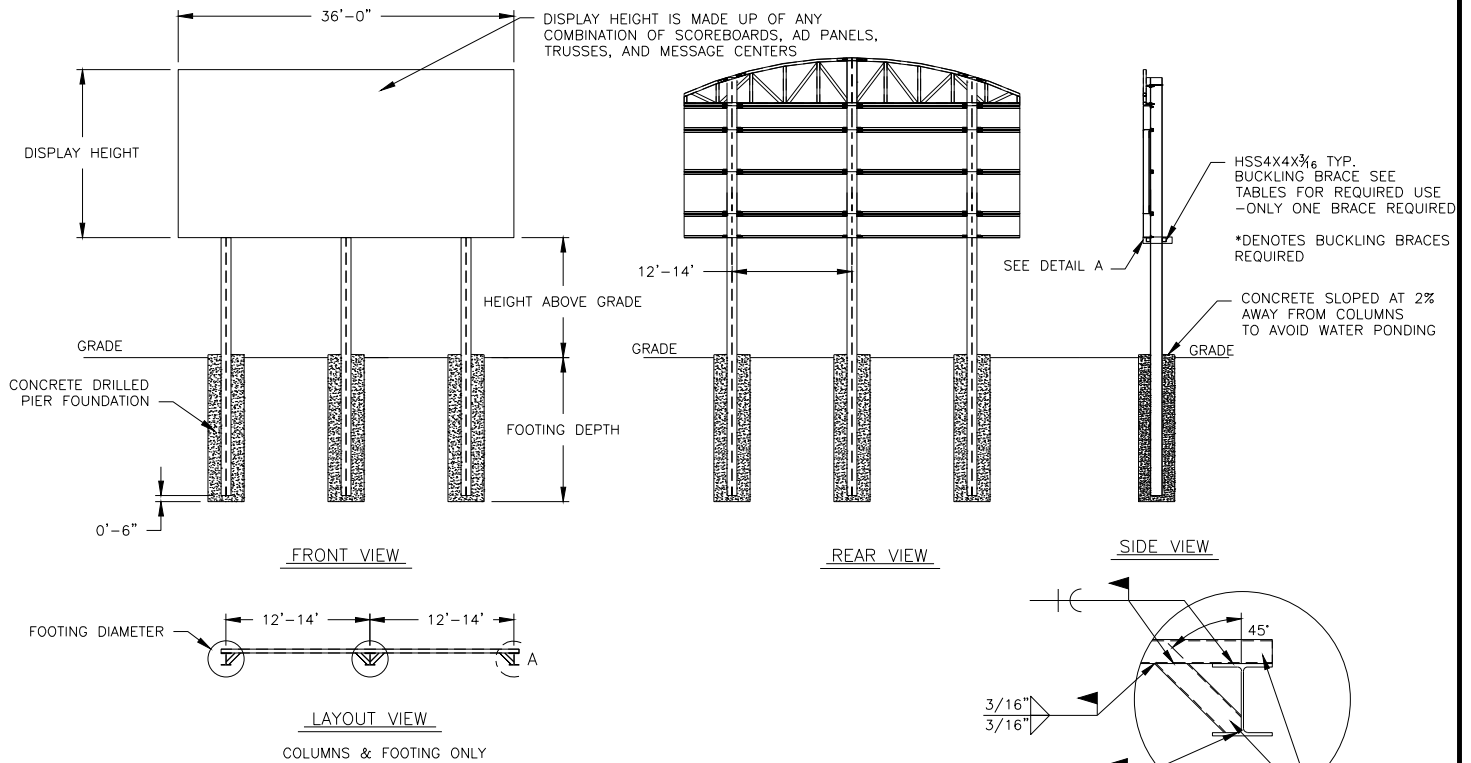


TABLE A - MOUNTING

EXPOSURE B

| HEIGHT ABOVE GRADE = 10' | | | | | | HEIGHT ABOVE GRADE = 15' | | | | | |
|--------------------------|----------------|----------------------|----------------------|----------------------|-----------------------|--------------------------|----------------|----------------------|----------------------|----------------------|-----------------------|
| DISPLAY HEIGHT (FT) | | DESIGN WIND VELOCITY | | | | DISPLAY HEIGHT (FT) | | DESIGN WIND VELOCITY | | | |
| | | 115 MPH | 130 MPH | 150 MPH | 170 MPH | | | 115 MPH | 130 MPH | 150 MPH | 170 MPH |
| 8 | COLUMN FOOTING | W10X33 3.0'X8.0' | W10X39 3.0'X8.5' | W14X43 3.0'X9.5' | W12X53 3.0'X10.5' | 8 | COLUMN FOOTING | W14X48 3.0'X8.5' | W12X53 3.0'X9.5' | W14X61 3.0'X10.5' | W16X67 3.0'X11.5' |
| 10 | COLUMN FOOTING | W12X40 3.0'X8.5' | W14X48 3.0'X9.5' | W12X58 3.0'X10.5' | W12X65 3.0'X11.5' | 10 | COLUMN FOOTING | W12X53 3.0'X9.5' | W14X61 3.0'X10.5' | W14X74 3.0'X11.5' | W18X86 4.0'X11.5' |
| 12 | COLUMN FOOTING | W12X50 3.0'X9.5' | W12X58 3.0'X10.5' | W16X67 3.0'X11.5' | W18X76 4.0'X11.5' | 12 | COLUMN FOOTING | W12X65 3.0'X10.5' | W18X76 4.0'X10.5' | W18X86 4.0'X11.5' | W21X101 4.0'X12.5' |
| 14 | COLUMN FOOTING | W21X58 4.0'X9.0' | W12X65 3.0'X11.0' | W18X76 4.0'X11.0' | W18X86 4.0'X12.5' | 14* | COLUMN FOOTING | W21X55 4.0'X9.5' | W16X67 3.0'X12.5' | W24X76 4.0'X12.5' | W27X84 5.0'X12.5' |
| 16 | COLUMN FOOTING | W12X65 3.0'X11.0' | W18X76 4.0'X11.0' | W18X86 4.0'X12.0' | W21X101 4.0'X14.0' | 16* | COLUMN FOOTING | W21X62 4.0'X10.5' | W18X76 4.0'X12.0' | W27X84 5.0'X12.0' | W30X99 5.0'X13.5' |
| 18* | COLUMN FOOTING | W21X48 4.0'X10.5' | W21X62 4.0'X11.5' | W24X68 4.0'X13.0' | W24X84 4.0'X15.0' | 18* | COLUMN FOOTING | W24X68 4.0'X11.5' | W24X84 4.0'X12.5' | W30X90 5.0'X13.0' | W30X108 5.0'X15.5' |
| 20* | COLUMN FOOTING | W21X55 4.0'X11.0' | W21X68 4.0'X12.0' | W24X76 4.0'X14.5' | W30X90 5.0'X14.5' | 20* | COLUMN FOOTING | W18X76 4.0'X12.0' | W27X84 5.0'X12.0' | W30X99 5.0'X14.5' | W33X118 5.0'X16.5' |

FOOTING DIMENSIONS = DIAMETER X DEPTH

* DENOTES ADDITIONAL BRACES REQUIRED AT THE MID HEIGHT OF DISPLAY

EXPOSURE C

| HEIGHT ABOVE GRADE = 10' | | | | HEIGHT ABOVE GRADE = 15' | | | |
|--------------------------|----------------|----------------------|-----------------------|--------------------------|----------------|----------------------|-----------------------|
| DISPLAY HEIGHT (FT) | | DESIGN WIND VELOCITY | | DISPLAY HEIGHT (FT) | | DESIGN WIND VELOCITY | |
| | | 115 MPH | 140 MPH | | | 115 MPH | 140 MPH |
| 8 | COLUMN FOOTING | W12X40 3.0'X9.0' | W12X53 3.0'X10.5' | 8 | COLUMN FOOTING | W12X58 3.0'X10.0' | W16X67 3.0'X11.5' |
| 10 | COLUMN FOOTING | W12X53 3.0'X10.0' | W14X61 3.0'X11.5' | 10 | COLUMN FOOTING | W12X65 3.0'X10.5' | W18X86 4.0'X11.5' |
| 12 | COLUMN FOOTING | W14X61 3.0'X11.0' | W18X76 4.0'X11.5' | 12 | COLUMN FOOTING | W18X76 4.0'X10.5' | W18X97 4.0'X12.5' |
| 14 | COLUMN FOOTING | W16X67 3.0'X11.5' | W18X86 4.0'X12.0' | 14* | COLUMN FOOTING | W24X68 4.0'X11.5' | W27X84 5.0'X12.5' |
| 16 | COLUMN FOOTING | W18X76 4.0'X11.0' | W21X101 4.0'X13.5' | 16* | COLUMN FOOTING | W18X76 4.0'X12.5' | W30X90 5.0'X15.5' |
| 18* | COLUMN FOOTING | W21X62 4.0'X12.0' | W24X84 4.0'X15.0' | 18* | COLUMN FOOTING | W24X84 4.0'X13.5' | W24X104 4.0'X17.0' |
| 20* | COLUMN FOOTING | W24X68 4.0'X13.0' | W27X84 5.0'X14.0' | 20* | COLUMN FOOTING | W30X90 5.0'X12.5' | W30X116 5.0'X16.0' |

FOOTING DIMENSIONS = DIAMETER X DEPTH

* DENOTES ADDITIONAL BRACES REQUIRED AT THE MID HEIGHT OF DISPLAY

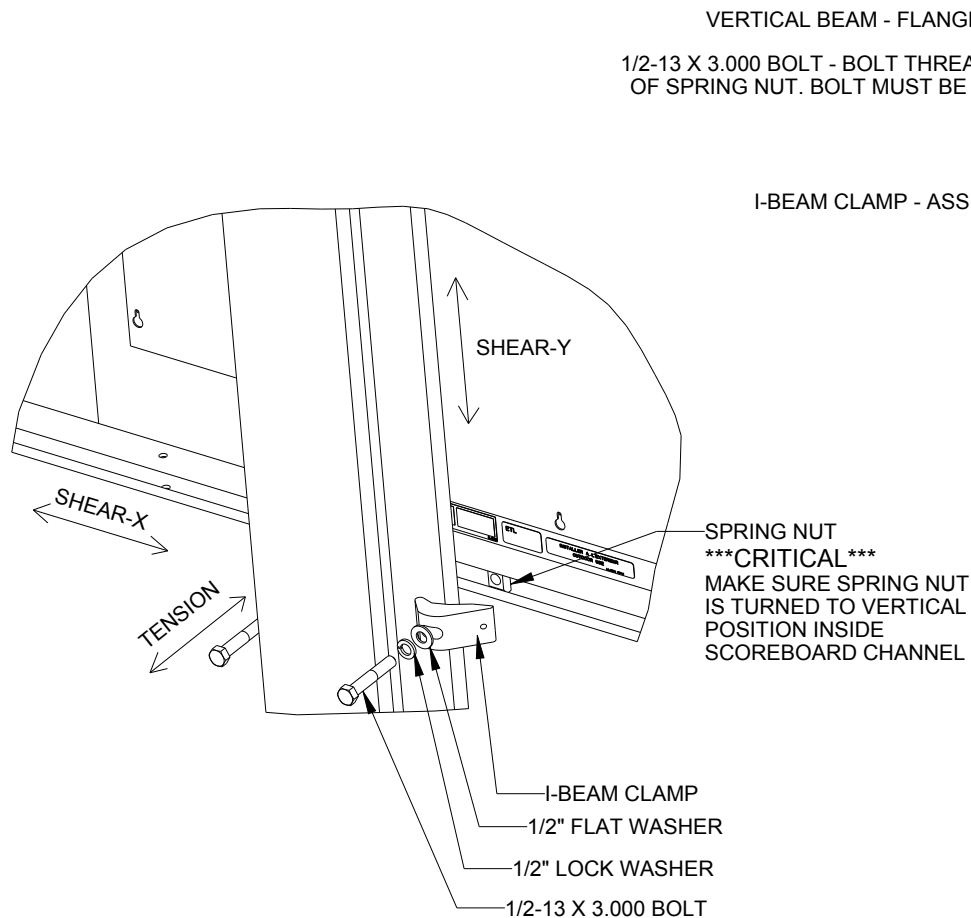
NOTES:

- FOOTING AND COLUMN SIZES ARE SUGGESTIONS ONLY, PROVIDED TO ASSIST WITH ESTIMATING INSTALLATION COSTS AND ARE NOT INTENDED FOR CONSTRUCTION PURPOSES. THE DESIGN MUST BE CERTIFIED BY A PROFESSIONAL ENGINEER LICENSED IN THE STATE OF THE INSTALLATION BEFORE THEY CAN BE USED FOR FABRICATION OR ERECTION.
- INTERNATIONAL BUILDING CODE 2012 USED IN DESIGN OF COLUMNS AND FOOTINGS WITH, IMPORTANCE FACTOR=1, Kzt=1.0, Kd=0.85, G=0.85. SEISMIC DESIGN WAS NOT CONSIDERED.
- FOOTING DIMENSIONS ARE BASED ON ASSUMED SOIL CLASS 4 (ALLOWABLE LATERAL BEARING PRESSURE OF 150 psf).
- STRUCTURAL STEEL IS GRADE A992 (50 ksi) STEEL. CONCRETE SHALL HAVE A MINIMUM 28 DAY COMPRESSIVE STRENGTH OF 2500 psi.
- THE AVERAGE DISPLAY WEIGHT FOR A LAYOUT CAN NOT EXCEED 8 PSF.
- DAKTRONICS INC. IS NOT RESPONSIBLE FOR STRUCTURES DESIGNED AND INSTALLED BY OTHERS.
- LOCAL BUILDING OFFICIALS SHOULD BE CONTACTED TO DETERMINE THE WIND SPEED AND EXPOSURE CATEGORY FOR THE PROPOSED SIGN LOCATION. THE EXPOSURE CATEGORY C IS DEFINED AS:

EXPOSURE B - URBAN AND SUBURBAN AREAS, OR OTHER TERRAIN WITH NUMEROUS SPACED OBSTRUCTIONS HAVING THE SIZE OF SINGLE-FAMILY DWELLINGS OR LARGER. THESE CONDITIONS MUST PREVAIL FOR A DISTANCE FROM THE SIGN OF AT LEAST 2,600 ft OR 20 TIMES THE SIGN HEIGHT, WHICHEVER IS GREATER

EXPOSURE C - OPEN TERRAIN WITH SCATTERED OBSTRUCTIONS HAVING HEIGHTS GENERALLY LESS THAN 30 FT. THIS CATEGORY INCLUDES FLAT OPEN COUNTRY, GRASSLANDS, AND ALL WATER SURFACES IN HURRICANE PRONE REGIONS.
- FOR SPECIFIC PRODUCT DETAILS ON WEIGHT, MOUNTING, ETC. REFER TO THE INDIVIDUAL PRODUCT SPECIFICATION SHEETS.

| | | | | | |
|-----------------|-----|--|----------------|---|--|
| | | DAKTRONICS, INC. BROOKINGS, SD 57006 DO NOT SCALE DRAWING | | THE CONCEPTS EXPRESSED AND DETAILS SHOWN ON THIS DRAWING ARE CONFIDENTIAL AND PROPRIETARY. DO NOT REPRODUCE BY ANY MEANS WITHOUT THE EXPRESS WRITTEN CONSENT OF DAKTRONICS, INC. COPYRIGHT 2014 DAKTRONICS, INC. | |
| | | PROJ: OUTDOOR SCOREBOARD INSTALLATION TITLE: 36' WIDTH SCOREBOARD INSTALLATION SPECS. | | | |
| DESIGN: TTASCHN | | DRAWN: TTASCHN | | DATE: 29 AUG 14 | |
| SCALE: 1/16"=1' | | | | | |
| SHEET | REV | JOB NO: | FUNC-TYPE-SIZE | | |
| | 00 | P 1538 | E - 10 - A | | |
| | | | | 1189181 | |



EXPLODED REAR ISOMETRIC VIEW

STANDARD MOUNTING METHOD

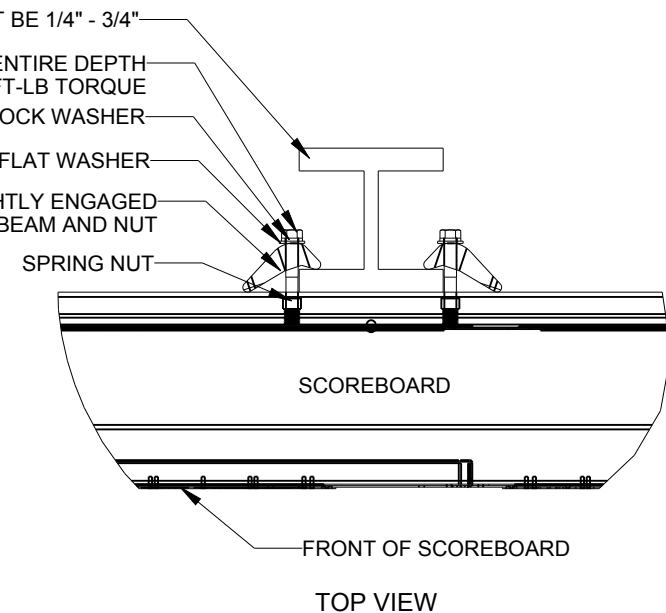
MOUNTING INSTRUCTIONS:

1. PLACE SPRING NUTS INTO SCOREBOARD CHANNEL IN APPROXIMATE LOCATION OF VERTICAL BEAMS
2. LIFT SCOREBOARD INTO POSITION
3. MAKE SURE THE 1/2-13 BOLTS ARE AS CLOSE TO THE I-BEAM FLANGES AS POSSIBLE
4. WHEN SCOREBOARD IS ADJUSTED TO FINAL DESIRED POSITION, TIGHTEN BOLTS FIRMLY
5. IF FLANGE THICKNESS IS MORE THAN 3/4" THICK LONGER BOLTS WILL BE REQUIRED AT THE CUSTOMER'S EXPENSE.


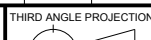
STRUCTURAL NOTES

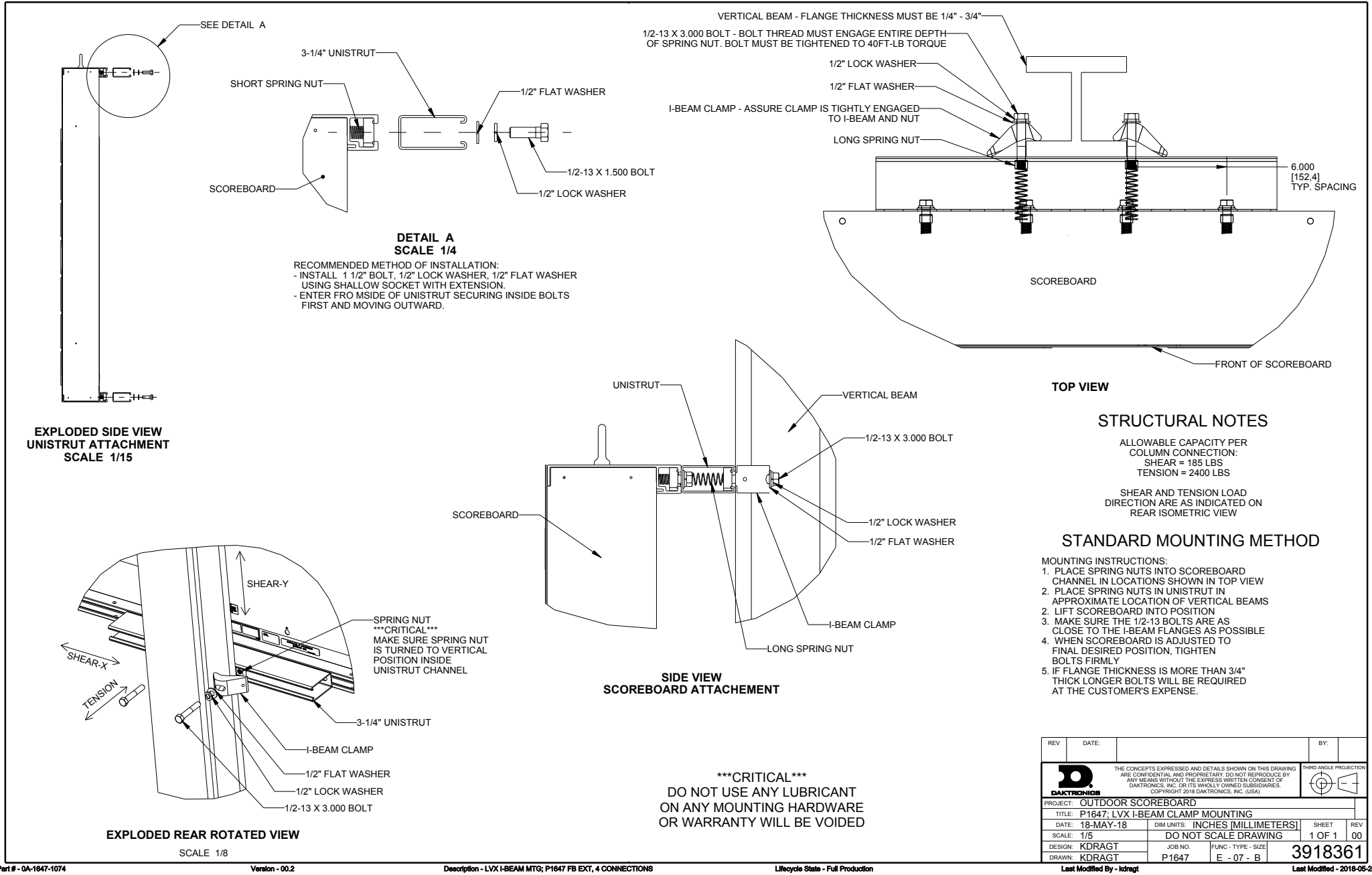
ALLOWABLE CAPACITY PER EACH CLAMP:
SHEAR = 160 LBS
TENSION = 2300 LBS

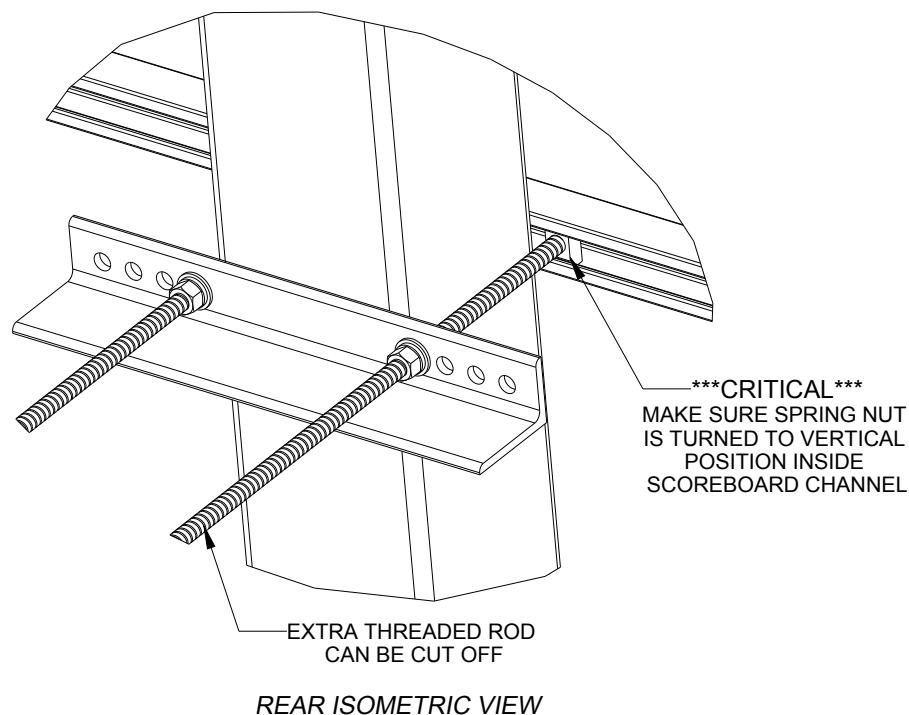
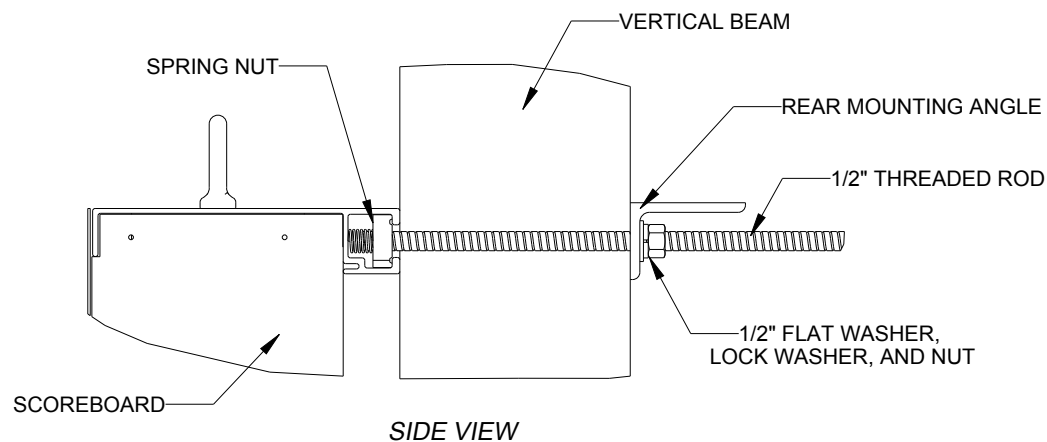
SHEAR AND TENSION LOAD
DIRECTION ARE AS INDICATED ON
REAR ISOMETRIC VIEW



| | | | |
|-----|-----------|---|--------------|
| 05 | 22 DEC 15 | PER EC-22871; ADDED LUBRICANT NOTE | PJS 18704 |
| 04 | 06 JAN 14 | ADDED ALLOWABLE TENSION AND SHEAR CAPACITY DETAILS | JAVA |
| 03 | 23 OCT 13 | PER EC-12382; CHANGED BOLT TORQUE FROM 30 FT-LB TO 40 FT-LB | NJM |
| 02 | 07 MAR 12 | ADDED STANDARD MOUNTING METHODS NOTES | KDD |
| 01 | 21 FEB 12 | CHANGED ROCKER TO I-BEAM | KDD |
| REV | DATE: | | BY: |

| | | | | | | | |
|---|--|---|--|---|--|---------|--|
|  | | <small>THE CONCEPTS EXPRESSED AND DETAILS SHOWN ON THIS DRAWING ARE CONFIDENTIAL AND PROPRIETARY. DO NOT REPRODUCE BY ANY MEANS WITHOUT THE EXPRESS WRITTEN CONSENT OF DAKTRONICS, INC. OR ITS WHOLLY OWNED SUBSIDIARIES. COPYRIGHT 2016 DAKTRONICS, INC. (USA)</small> | |  | | | |
| PROJECT: OUTDOOR SCOREBOARD | | | | | | | |
| TITLE: P1647; I-BEAM CLAMP MOUNTING | | | | | | | |
| DATE: 22-DEC-15 | | DIM UNITS: INCHES [MILLIMETERS] | | SHEET | | REV | |
| SCALE: 1/8 | | DO NOT SCALE DRAWING | | 1 OF 1 | | 05 | |
| DESIGN: MCARSRU | | JOB NO. | | FUNC - TYPE - SIZE | | 1052565 | |
| DRAWN: MCARSRU | | P1647 | | E - 07 - A | | | |

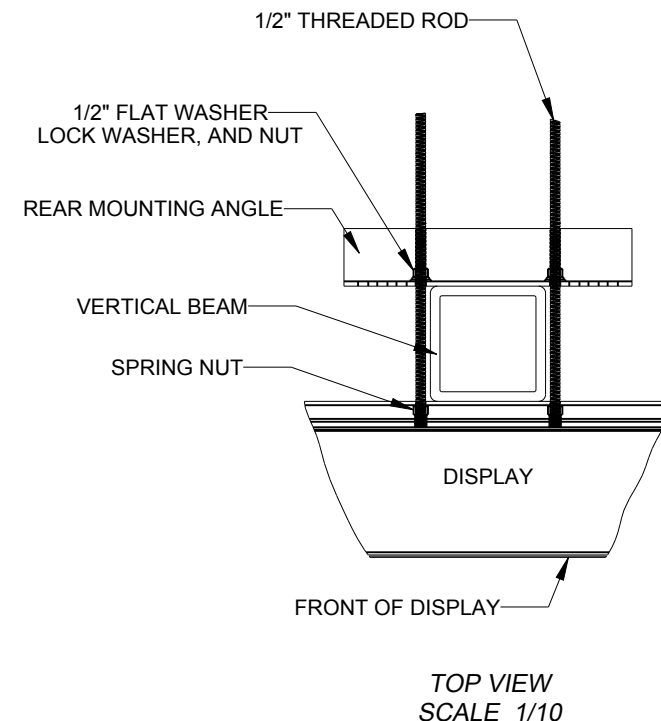




STRUCTURAL NOTES:
- BOLT TORQUE: 30 FT-LB

NOTES:

- THREADED RODS RUN ALONG BOTH SIDES OF BEAM
- RODS DO NOT PASS THROUGH THE FLANGES OF THE BEAM
- NO DRILLING NECESSARY
- MAKE SURE SPRING NUT IS PERPENDICULAR TO CHANNEL OPENING ON SCOREBOARD

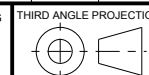


*****CRITICAL*****
DO NOT USE ANY LUBRICANT
ON ANY MOUNTING HARDWARE
OR WARRANTY WILL BE VOIDED

| | | | | |
|-----|------------|---|-----------|--|
| 04 | 22 DEC 15 | PER EC-22871; ADDED LUBRICANT WARNING | PJS 18704 | |
| 03 | 03 JULY 13 | ADDED STRUCTURAL NOTE | TTF | |
| 02 | 20 SEP 12 | PER EC-7114; REMOVED CHAMFER FROM 0M-133259 | LMG | |
| 01 | 06 OCT 11 | REPLACED VERTICAL I-BEAM WITH 6" X 6" SQUARE TUBE | JAVA | |
| REV | DATE: | | BY: | |

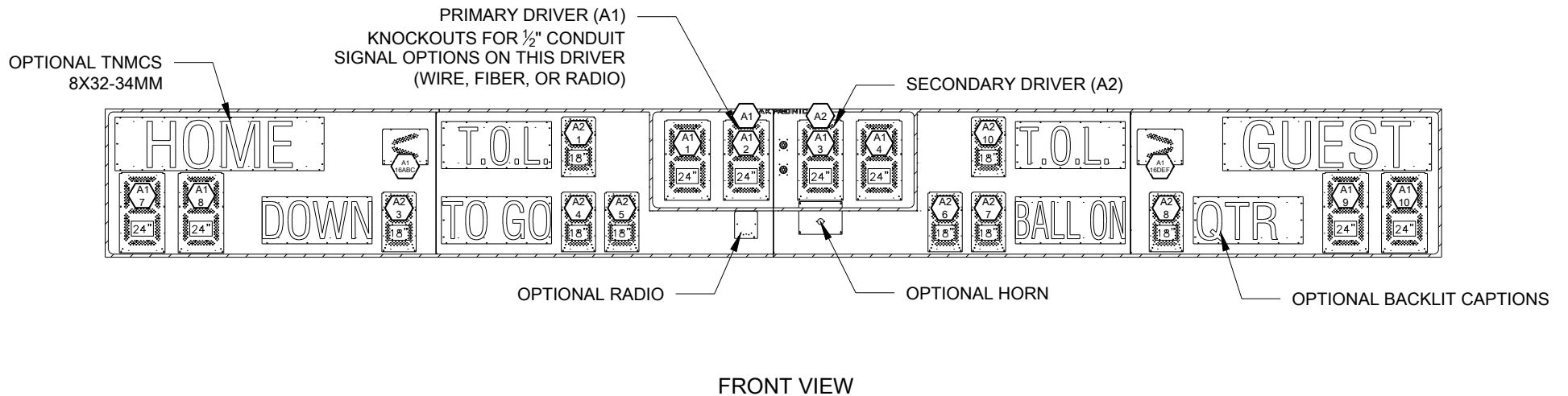


THE CONCEPTS EXPRESSED AND DETAILS SHOWN ON THIS DRAWING ARE CONFIDENTIAL AND PROPRIETARY. DO NOT REPRODUCE BY ANY MEANS WITHOUT THE EXPRESS WRITTEN CONSENT OF DAKTRONICS, INC. OR ITS WHOLLY OWNED SUBSIDIARIES. COPYRIGHT 2016 DAKTRONICS, INC. (USA)



| | | | | |
|-------------------------------------|---------------------------------|--------------------|---------|-----|
| PROJECT: OUTDOOR SCOREBOARDS | | | | |
| TITLE: P1647; POLE MOUNTING OPTIONS | | | | |
| DATE: 22-DEC-15 | DIM UNITS: INCHES [MILLIMETERS] | | SHEET | REV |
| SCALE: 1/5 | DO NOT SCALE DRAWING | | 1 OF 1 | 04 |
| DESIGN: DOPPELT | JOB NO. | FUNC - TYPE - SIZE | 1048184 | |
| DRAWN: DOPPELT | P1647 | E - 10 - A | | |

FB-2038



NOTES:

= LED DRIVER NUMBER &
LED DRIVER CONNECTOR
WIRED TO THAT DIGIT

= DIGIT SIZE

= DRIVER NUMBER

= SEGMENT DESIGNATION

| | | | | | |
|------------------------------------|--|--|--|-------------------------------|--|
| | | THE CONCEPTS EXPRESSED AND DETAILS SHOWN ON THIS DRAWING ARE CONFIDENTIAL AND PROPRIETARY. DO NOT REPRODUCE BY ANY MEANS WITHOUT THE EXPRESS WRITTEN CONSENT OF DAKTRONICS, INC. OR ITS WHOLLY OWNED SUBSIDIARIES. COPYRIGHT 2021 DAKTRONICS, INC. (USA) | | | |
| PROJECT: OUTDOOR SCOREBOARDS | | | | | |
| TITLE: COMPONENT LOCATION; FB-2038 | | | | | |
| DATE: 09 NOV 21 | | DIM UNITS: INCHES [MILLIMETERS] | | SHEET REV | |
| SCALE: 1=40 | | DO NOT SCALE DRAWING | | 00 | |
| DESIGN: KDMILLER | | JOB NO. P1647 | | FUNC - TYPE - SIZE E - 10 - A | |
| DRAWN: KDMILLER | | | | 4975621 | |