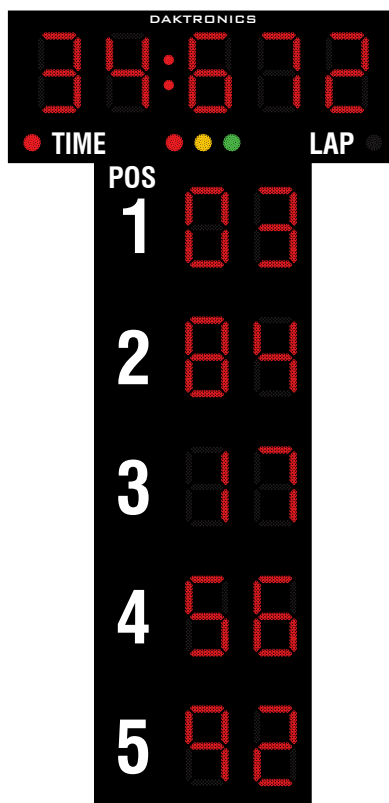


DAKTRONICS AR-2422 PRODUCT SPECIFICATIONS



This vertical outdoor LED auto racing display shows running time or current lap and car numbers for the top five positions. Indicators show LAP/TIME selection and flag status (red, caution, green). Display shown with red PanaView® digits.

DIMENSIONS	# OF SECTIONS	UNCRATED WEIGHT	POWER (120 VAC)*
18'-6" H x 9'-0" W x 8" D (5.64 m, 2.74 m, 203 mm)	Two Total	490 lb (222 kg)	Red/Amber Digits: 270 Watts, 2.3 Amps White Digits: 560 Watts, 4.7 Amps
3'-6" H x 9'-0" W x 8" D (1.07 m, 2.74 m, 203 mm)	Time/Lap	140 lb (64 kg)	
15'-0" H x 5'-0" W x 8" D (4.57 m, 1.52 m, 203 mm)	Positions 1-5	350 lb (159 kg)	

*Display requires a dedicated circuit. Models with 240 VAC power at half the indicated amperage are also offered (International Use Only).

DIGITS & INDICATORS

- All digits are 24" (610 mm) high. All indicators are 4" (102 mm) in diameter. Colons are 2" (51 mm) in diameter.
- Select red, amber, or white LED digits and indicators (race status indicators are always red, yellow, and green).
- Display features robust weather-sealed digits (see [DD2495646](#)).
- Digits may be dimmed for night viewing.

CAPTIONS

- LAP, TIME, and POS captions are 6" (152 mm) high. All other captions are 15" (381 mm) high.
- Standard captions are vinyl, applied directly to the display face.

DISPLAY COLOR

Choose from 150+ colors (from Martin Senour® paint book) at no additional cost.

CONSTRUCTION

Alcoa aluminum alloy 5052 for excellent corrosion resistance

PRODUCT SAFETY APPROVAL

ETL-listed to UL 48, tested to CSA standards, and CE-labeled

OPERATING TEMPERATURES

- Display: -22° to 122° Fahrenheit (-30° to 50° Celsius)
- Console: 32° to 130° Fahrenheit (0° to 54° Celsius)

WWW.DAKTRONICS.COM E-MAIL: SALES@DAKTRONICS.COM

201 Daktronics Drive, PO Box 5128, Brookings, SD 57006
Phone: 1-800-325-8766 or 605-692-0200 Fax: 605-697-4746
DD2910643 092120 Page 1 of 5



DAKTRONICS AR-2422 PRODUCT SPECIFICATIONS

CONTROL CONSOLE	CONTROL OPTIONS
All Sport® 5100	Wired (standard): One-pair shielded cable of 22 AWG minimum is required. A cover plate with mounted connector and standard 2" x 4" x 2" (51 mm x 102 mm x 51 mm) outlet box is provided. Connector mates with signal cable from control console.
	Wireless (optional): 2.4 GHz spread spectrum radio features 64 non-interfering channels and 8 broadcast groups (see SL-04370).

MOUNTING

Hardware to mount each display section on two beams is included; hardware for more beams is at additional cost. Standard mounting method uses angle brackets; maximum beam width is 12" (305 mm) and maximum beam depth is 22" (559 mm).

SERVICE ACCESS

Digit panels and electronics are serviced from the front of the display.

GENERAL INFORMATION

100% solid state electronics are housed in an all aluminum cabinet. Display is shipped in two sections. Display power is to be provided on a dedicated circuit to prevent loss of race information due to failure of another component on the circuit. Specifications and pricing are subject to change without notice.

OPTIONS & ACCESSORIES

- Multiple caption colors (see [DD2101644](#))
- Advertising/identification panels
- Decorative accents
- Electronic message centers and video displays in multiple sizes

ADVERTISING/IDENTIFICATION PANELS

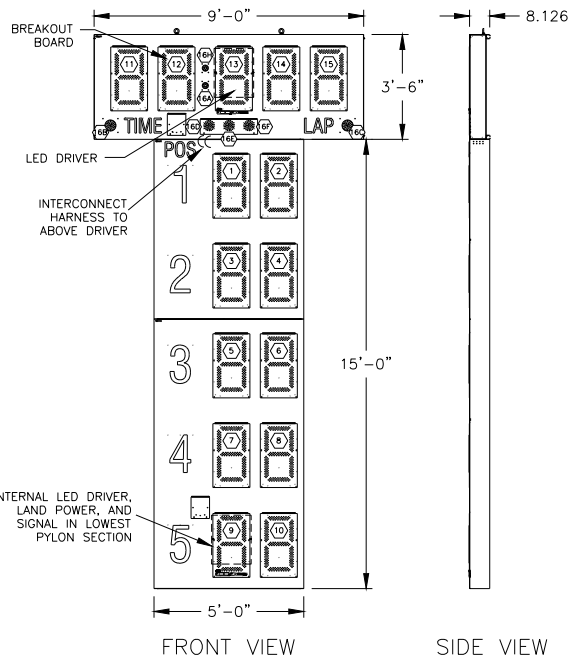
Backlit & Non-Backlit:

- 1'-6" H x 9'-0" W (457 mm, 2.74 m)
- 2'-0" H x 9'-0" W (610 mm, 2.74 m)
- 2'-6" H x 9'-0" W (762 mm, 2.74 m)

For additional non-backlit panel sizes, see [SL-03761](#).

FOR ADDITIONAL INFORMATION

- Specifications: DWG-1080206 (attached)
- Structure: DWG-1081068 (attached)
- Mounting: DWG-1048184 (attached)



NOTES:

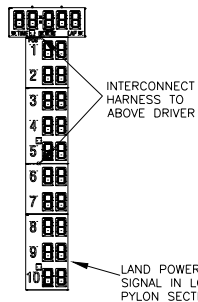
1. USE INSTALLATION MANUAL FOR DETAILS AND OTHER DRAWINGS
2. EACH SECTION HAS A MASTER DRIVER, INCASE THEY ARE SOLD INDIVIDUALLY.
3. CONNECT POWER AND SIGNAL TO THE LOWEST SECTION AND INTERCONNECT A PWR/SIGNAL HARNESS INTO THE ABOVE SECTION(S)
4. POWER REQUIRES 2 WIRES PLUS A GND.
5. DISPLAY MUST BE GROUNDED PER ARTICLE 250 AND 600 OF THE NATIONAL ELECTRIC CODE (N.E.C.) AND MUST MEET OR EXCEED ALL LOCAL ELECTRIC CODES.

② = LED DRIVER CONNECTOR
WIRED TO THAT DIGIT

①69 = LED DRIVER CONNECTOR NO.
AND SEGMENT DESIGNATION

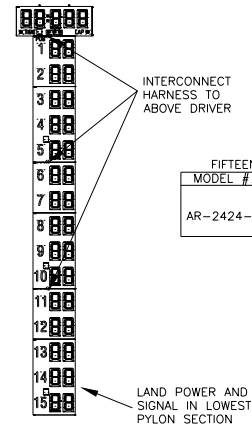
FIVE POSITION DISPLAY [(1) TIME/LAP COUNTER SECTION AND (1) FIVE POSITION SECTIONS]						
MODEL #	APPROX. WEIGHT	SECTION	POWER REQUIREMENTS / ONE PHASE		TOTAL WATTS	# OF PAIRS OF 22 AWG
			TOTAL AMPS	TOTAL WATTS		
AR-2422-R	490 Lbs. (222kg)	1	5A	120V	600 WATTS	1
			2.6A	240V		

NOTE THAT A -R SCOREBOARD PREFIX INDICATES A RED LED DISPLAY. THE -R PREFIX CAN BE REPLACED WITH A -A WHICH SIGNIFIES AN AMBER LED DISPLAY.



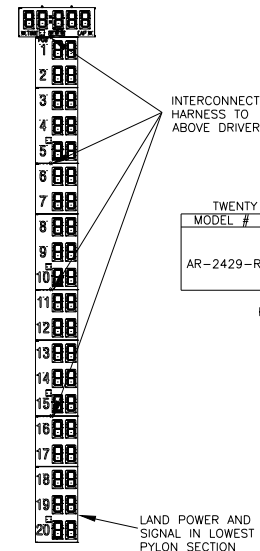
TEN POSITION DISPLAY [(1) TIME/LAP COUNTER SECTION AND (2) FIVE POSITION SECTIONS]						
MODEL #	APPROX. WEIGHT	SECTION	POWER REQUIREMENTS / ONE PHASE		TOTAL WATTS	# OF PAIRS OF 22 AWG
			TOTAL AMPS	TOTAL WATTS		
AR-2423-R	840 Lbs. (381kg)	1-2	7.5A	120V	900 WATTS	1
			3.9A	240V		

NOTE THAT A -R SCOREBOARD PREFIX INDICATES A RED LED DISPLAY. THE -R PREFIX CAN BE REPLACED WITH A -A WHICH SIGNIFIES AN AMBER LED DISPLAY.




FIFTEEN POSITION DISPLAY [(1) TIME/LAP COUNTER SECTION AND (3) FIVE POSITION SECTIONS]						
MODEL #	APPROX. WEIGHT	SECTION	POWER REQUIREMENTS / ONE PHASE		TOTAL WATTS	# OF PAIRS OF 22 AWG
			TOTAL AMPS	TOTAL WATTS		
AR-2424-R	1190 Lbs. (540kg)	1-3	10A	120V	1200 WATTS	1
			5A	240V		

NOTE THAT A -R SCOREBOARD PREFIX INDICATES A RED LED DISPLAY. THE -R PREFIX CAN BE REPLACED WITH A -A WHICH SIGNIFIES AN AMBER LED DISPLAY.

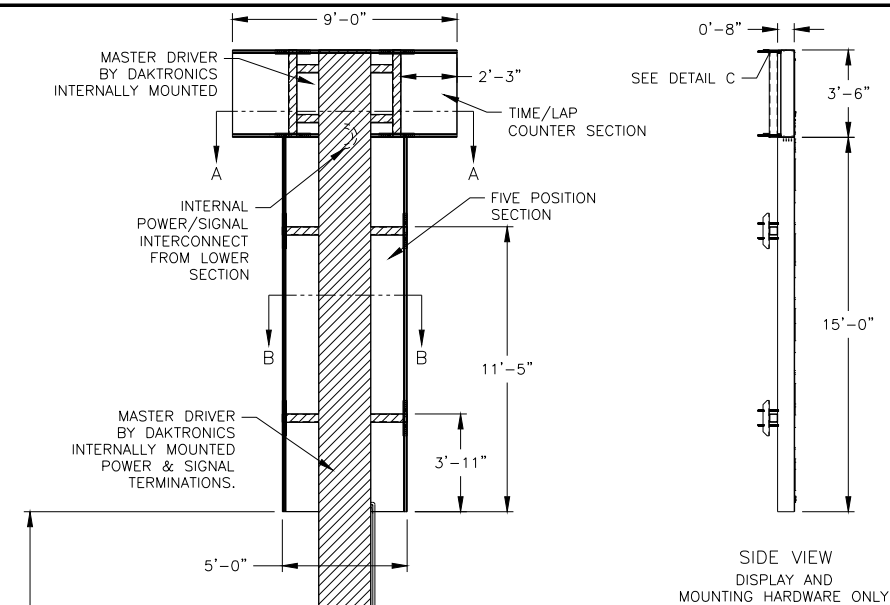


TWENTY POSITION DISPLAY [(1) TIME/LAP COUNTER SECTION AND (4) FIVE POSITION SECTIONS]						
MODEL #	APPROX. WEIGHT	SECTION	POWER REQUIREMENTS / ONE PHASE		TOTAL WATTS	# OF PAIRS OF 22 AWG
			TOTAL AMPS	TOTAL WATTS		
AR-2429-R	1540 Lbs. (698kg)	1-4	12.5A	120V	1500 WATTS	1
			6.25A	240V		

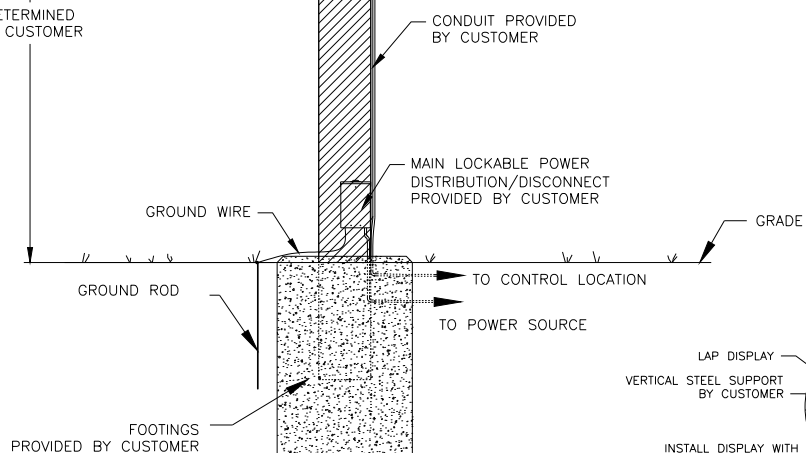
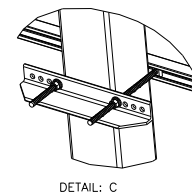
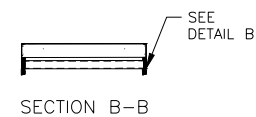
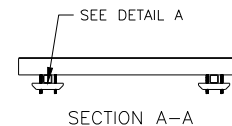
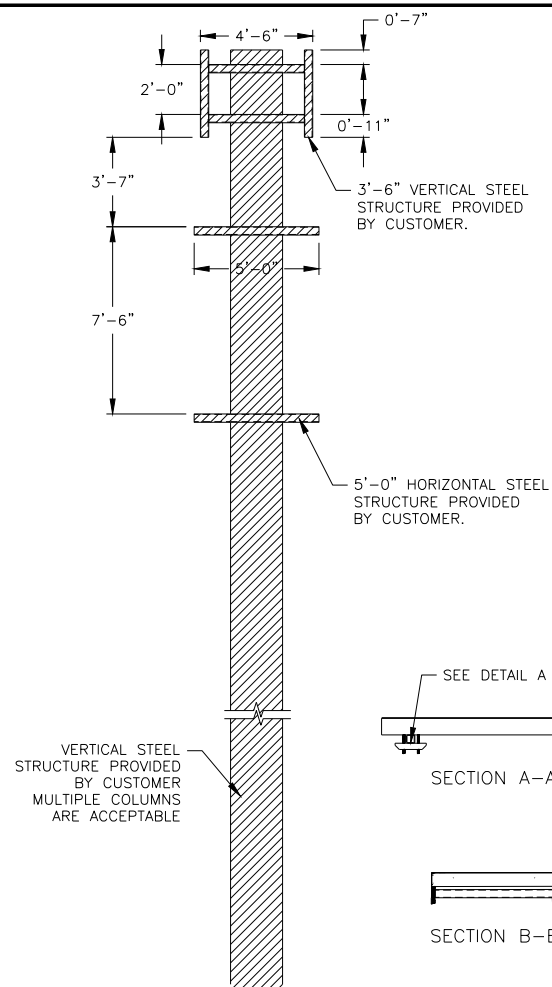
NOTE THAT A -R SCOREBOARD PREFIX INDICATES A RED LED DISPLAY. THE -R PREFIX CAN BE REPLACED WITH A -A WHICH SIGNIFIES AN AMBER LED DISPLAY.

		DAKTRONICS, INC.		THE CONCEPTS EXPRESSED AND DETAILS SHOWN ON THIS DRAWING ARE CONFIDENTIAL AND PROPRIETARY. DO NOT REPRODUCE BY ANY MEANS WITHOUT THE EXPRESSED WRITTEN CONSENT OF DAKTRONICS, INC. COPYRIGHT 2012 DAKTRONICS, INC.	
BROOKINGS, SD 57006					
DO NOT SCALE DRAWING					
PROJ:OUTDOOR RACING DISPLAYS					
TITLE:SPECIFICATIONS; AR-2422/2423/2424/2429					
DESIGN:KDRAGT		DRAWN:KDRAGT		DATE:05 JAN 12	
SCALE:1=50					
SHEET		REV	JOB NO:	FUNC-TYPE-SIZE	
01		P1198	E-10-B	1080206	

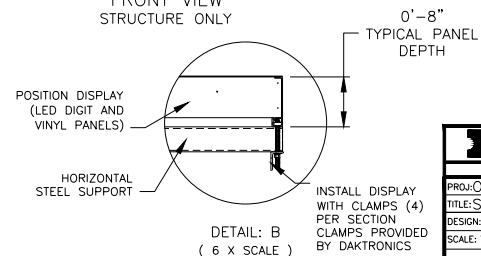
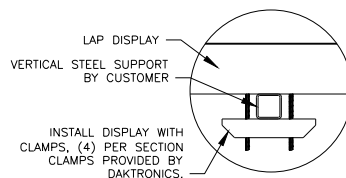
REV	DATE:	ADDED 240V SPECS PER EC-8766	BY:
01	12 DEC 12		KDD



SIDE VIEW
DISPLAY AND
MOUNTING HARDWARE ONLY




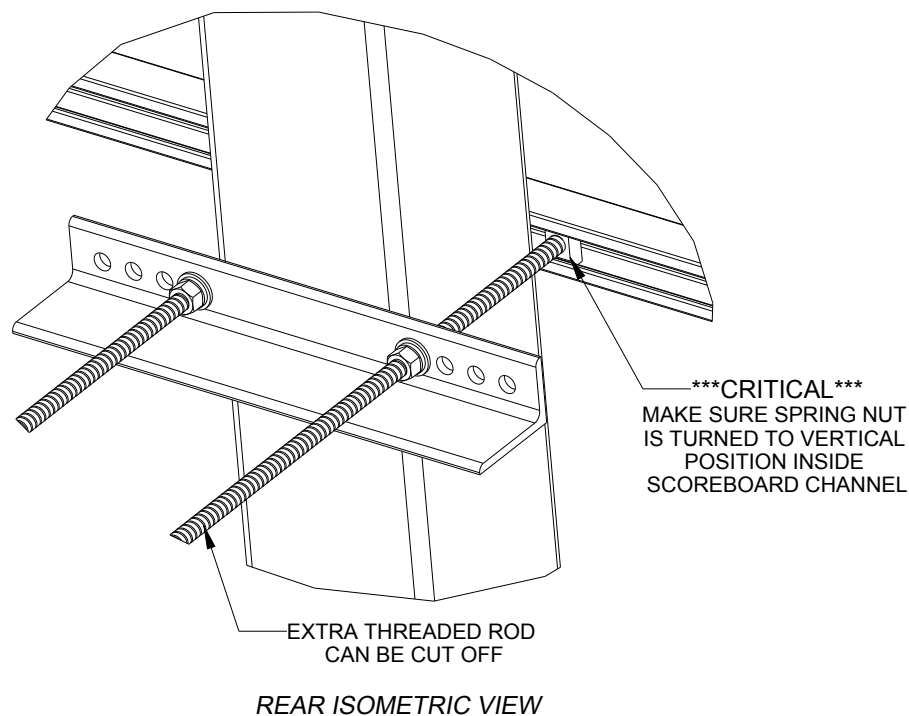
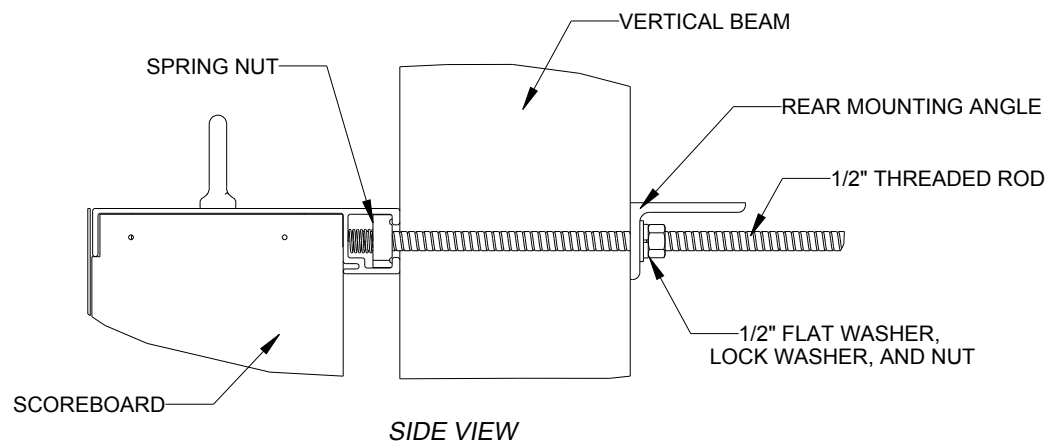
REAR VIEW
AR-2422
(TIME/LAP W/5 POS DISPLAY)



NOTES:

1. THE HORIZONTAL AND VERTICAL STEEL STRUCTURE IS SHOWN WITH A 4" SQUARE TUBE.
2. DISPLAY MUST BE CONNECTED TO A GROUND ROD AT THE SCOREBOARD LOCATION.
3. SPECIFICATIONS FOR FOOTINGS AND BEAMS MUST BE DETERMINED BY A LICENSED ENGINEER USING DATA FROM A SOIL SAMPLE TEST AT THE SITE.
4. STRUCTURE IS SHOWN WITH SINGLE POLE APPLICATION. ADDITIONAL INSTALLATION CONSIDERATIONS WILL BE DICTATED BY COLUMN LENGTH, WIND LOAD, SERVICE ACCESS, POWER REQUIREMENTS, FOOTING SIZES, NUMBER OF VERTICAL MOUNTING COLUMNS AND AD PANELS SIZES IN REGARDS TO COLUMN SIZE AND FOOTING(S) DIMENSIONS.
5. COLUMNS AND FOOTINGS MUST BE DESIGNED BY A STATE LICENSED ENGINEER. DAKTRONICS DOES NOT ASSUME THE LIABILITY FOR ANY INSTALLATIONS DERIVED FROM THIS INFORMATION OR DESIGNED AND INSTALLED BY OTHERS.
6. REFERENCE DWG-1048184 FOR POLE MOUNTING OPTIONS.

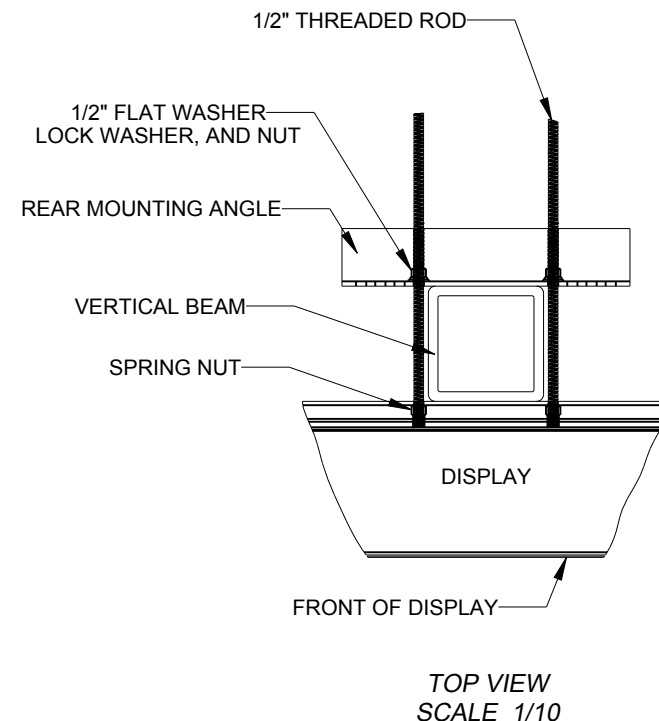
 DAKTRONICS, INC. BROOKINGS, SD 57006		THE CONCEPTS EXPRESSED AND DETAILS SHOWN ON THIS DRAWING ARE CONFIDENTIAL AND PROPRIETARY. DO NOT REPRODUCE BY ANY MEANS WITHOUT THE EXPRESSED WRITTEN CONSENT OF DAKTRONICS, INC. COPYRIGHT 2012 DAKTRONICS, INC.
DO NOT SCALE DRAWING		
PROJ: OUTDOOR AUTO RACING SCOREBOARDS		
TITLE: STRUCTURE; 24" PYLON DISPLAY, 1-5 POS, LED		
DESIGN: KDRAGT	DRAWN: KDRAGT	DATE: 16 JAN 12
SCALE: 1=60		
SHEET	REV	JOB NO:
	00	P1198
		FUNC-TYPE-SIZE
		E-10-B
1081068		



STRUCTURAL NOTES:
- BOLT TORQUE: 30 FT-LB

NOTES:

- THREADED RODS RUN ALONG BOTH SIDES OF BEAM
- RODS DO NOT PASS THROUGH THE FLANGES OF THE BEAM
- NO DRILLING NECESSARY
- MAKE SURE SPRING NUT IS PERPENDICULAR TO CHANNEL OPENING ON SCOREBOARD

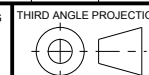


*****CRITICAL*****
DO NOT USE ANY LUBRICANT
ON ANY MOUNTING HARDWARE
OR WARRANTY WILL BE VOIDED

04	22 DEC 15	PER EC-22871; ADDED LUBRICANT WARNING	PJS 18704	
03	03 JULY 13	ADDED STRUCTURAL NOTE	TTF	
02	20 SEP 12	PER EC-7114; REMOVED CHAMFER FROM 0M-133259	LMG	
01	06 OCT 11	REPLACED VERTICAL I-BEAM WITH 6" X 6" SQUARE TUBE	JAVA	
REV	DATE:		BY:	



THE CONCEPTS EXPRESSED AND DETAILS SHOWN ON THIS DRAWING ARE CONFIDENTIAL AND PROPRIETARY. DO NOT REPRODUCE BY ANY MEANS WITHOUT THE EXPRESS WRITTEN CONSENT OF DAKTRONICS, INC. OR ITS WHOLLY OWNED SUBSIDIARIES. COPYRIGHT 2016 DAKTRONICS, INC. (USA)



PROJECT: OUTDOOR SCOREBOARDS				
TITLE: P1647; POLE MOUNTING OPTIONS				
DATE: 22-DEC-15	DIM UNITS: INCHES [MILLIMETERS]		SHEET	REV
SCALE: 1/5	DO NOT SCALE DRAWING		1 OF 1	04
DESIGN: DOPPELT	JOB NO.	FUNC - TYPE - SIZE	1048184	
DRAWN: DOPPELT	P1647	E - 10 - A		