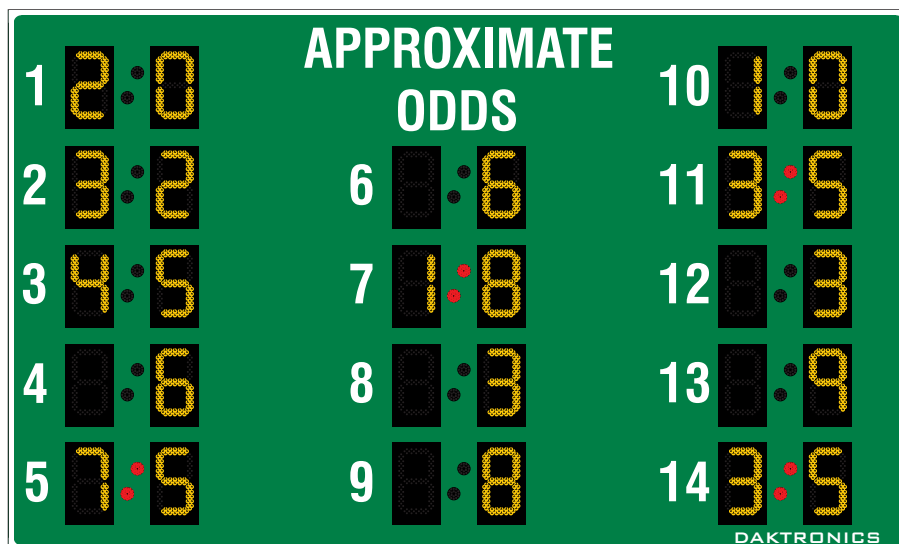


DAKTRONICS PM-2106 PRODUCT SPECIFICATIONS



This outdoor pari-mutuel tote board section displays APPROXIMATE ODDS for up to 14 runners. Display shown with optional striping and amber PanaView® digits.

DIMENSIONS	# OF SECTIONS	UNCRATED WEIGHT	POWER (120 VAC)*
9'-0" H x 15'-0" W x 8" D (2.74 m, 4.57 m, 203 mm)	Two Total	575 lb (261 kg)	Red/Amber Digits: 275 Watts, 2.3 Amps White Digits: 560 Watts, 4.7 Amps
5'-5" H x 15'-0" W x 8" D (1.65 m, 4.57 m, 203 mm)	Top	345 lb (156 kg)	
3'-7" H x 15'-0" W x 8" D (1.09 m, 4.57 m, 203 mm)	Bottom	230 lb (104 kg)	

*Display requires a dedicated circuit. Models with 240 VAC power at half the indicated amperage are also offered (International Use Only).

DIGITS & INDICATORS

- All digits are 15" (381 mm) high. Slashes use two 2" (51 mm) diameter indicators.
- Select red, amber, or white LED digits. With red digits, indicators are amber; with amber or white digits, indicators are red.
- Display features robust weather-sealed digits (see [DD2495646](#)).
- Digits may be dimmed for night viewing.

CAPTIONS

- All captions are 8" (203 mm) high.
- Standard captions are vinyl, applied directly to the display face.

DISPLAY COLOR

Choose from 150+ colors (from Martin Senour® paint book) at no additional cost.

CONSTRUCTION

Alcoa aluminum alloy 5052 for excellent corrosion resistance

PRODUCT SAFETY APPROVAL

ETL-listed to UL 48, tested to CSA standards, and CE-labeled

OPERATING TEMPERATURES

-22° to 122° Fahrenheit (-30° to 50° Celsius)

DAKTRONICS PM-2106 PRODUCT SPECIFICATIONS

CONTROL OPTIONS

Daktronics pari-mutuel displays are designed to be controlled by third-party tote software. Software providers must have permission to output data in a specific format for Daktronics displays. Contact Daktronics for approved providers. Refer to the documentation from the particular software provider for operating instructions.

MOUNTING

Hardware to mount display on two beams is included; hardware for more beams is at additional cost. Standard mounting uses I-beam clamps. Optional mounting method using angle brackets is also offered; maximum beam width is 12" (305 mm) and maximum beam depth is 22" (559 mm). Refer to attached drawings for more information on mounting methods.

SERVICE ACCESS

Digit panels and electronics are serviced from the front of the display.

GENERAL INFORMATION

100% solid state electronics are housed in an all aluminum cabinet. Display is shipped in two sections. Display power is to be provided on a dedicated circuit to prevent loss of race information due to failure of another component on the circuit. Specifications and pricing are subject to change without notice.

OPTIONS & ACCESSORIES

- Cabinet border striping
- Multiple caption and striping colors (see [DD2101644](#))
- Optional angle bracket mounting method
- Advertising/identification panels
- Decorative accents
- Electronic message centers and video displays in multiple sizes

ADVERTISING/IDENTIFICATION PANELS

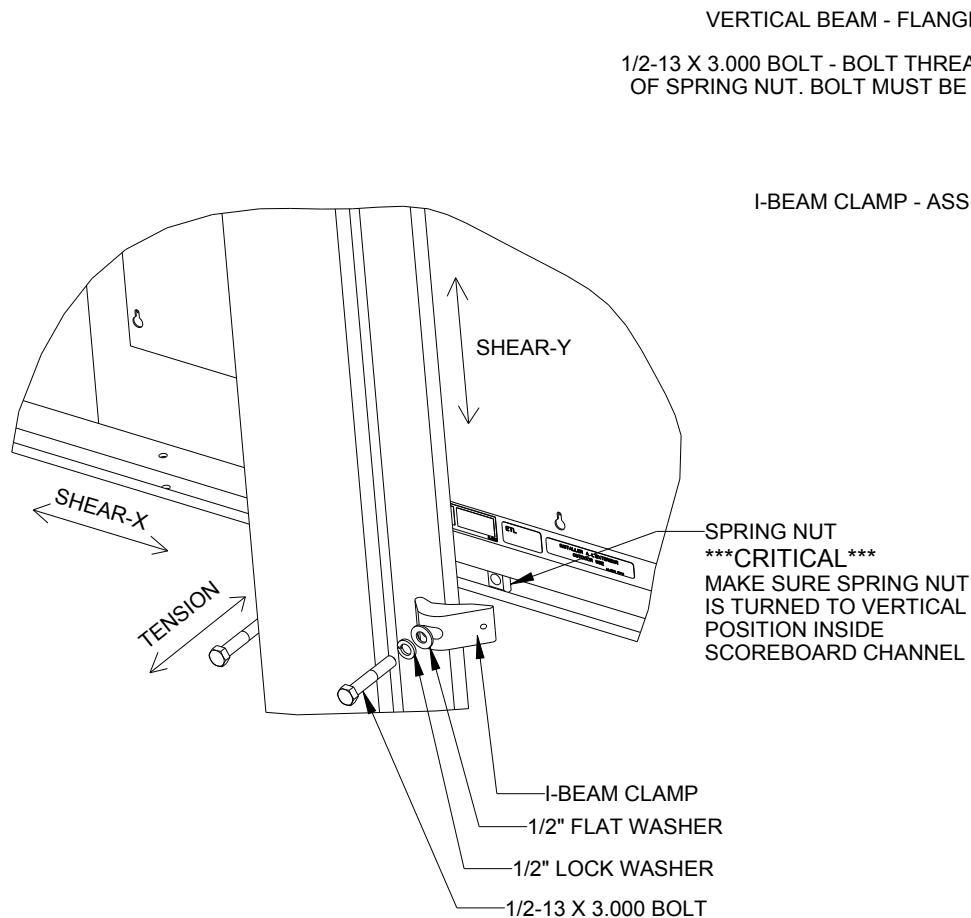
Backlit & Non-Backlit Top/Bottom:

- 1'-6" H x 15'-0" W (457 mm, 4.57 m)
- 2'-0" H x 15'-0" W (610 mm, 4.57 m)
- 2'-6" H x 15'-0" W (762 mm, 4.57 m)

For additional non-backlit panel sizes, see [SL-03761](#).

FOR ADDITIONAL INFORMATION

- Standard I-beam Mounting: DWG-1052565 (attached)
- Optional Pole Mounting: DWG-1048184 (attached)
- Component Locations: DWG-1144530 (attached)



EXPLODED REAR ISOMETRIC VIEW

STANDARD MOUNTING METHOD

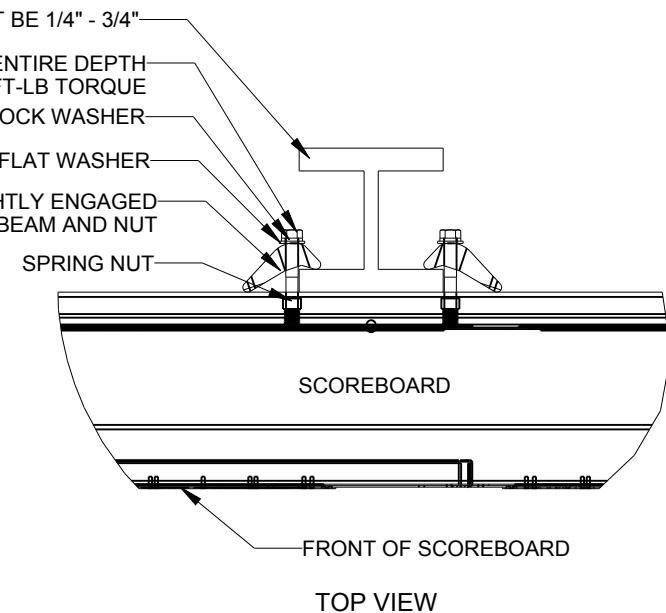
MOUNTING INSTRUCTIONS:

1. PLACE SPRING NUTS INTO SCOREBOARD CHANNEL IN APPROXIMATE LOCATION OF VERTICAL BEAMS
2. LIFT SCOREBOARD INTO POSITION
3. MAKE SURE THE 1/2-13 BOLTS ARE AS CLOSE TO THE I-BEAM FLANGES AS POSSIBLE
4. WHEN SCOREBOARD IS ADJUSTED TO FINAL DESIRED POSITION, TIGHTEN BOLTS FIRMLY
5. IF FLANGE THICKNESS IS MORE THAN 3/4" THICK LONGER BOLTS WILL BE REQUIRED AT THE CUSTOMER'S EXPENSE.


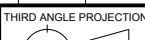
STRUCTURAL NOTES

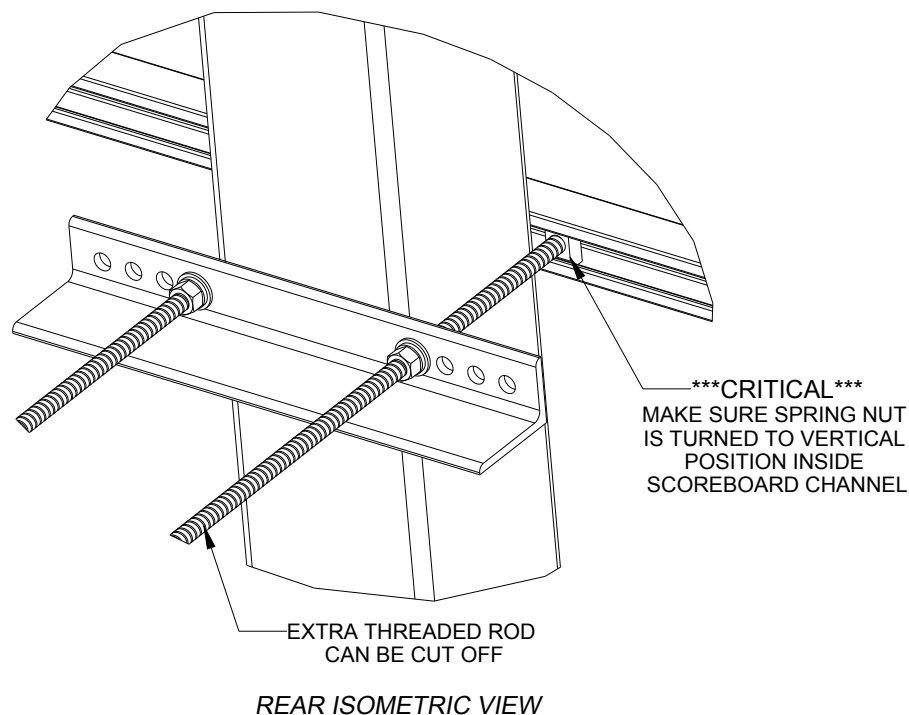
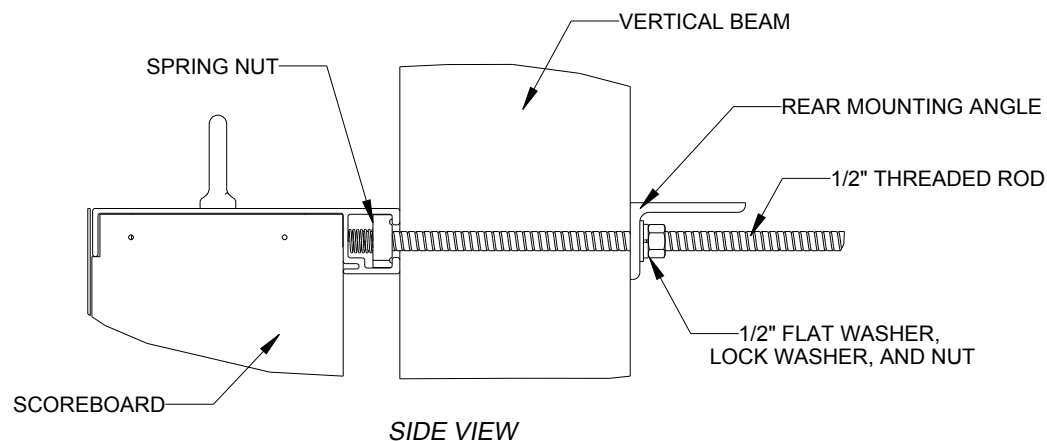
ALLOWABLE CAPACITY PER EACH CLAMP:
SHEAR = 160 LBS
TENSION = 2300 LBS

SHEAR AND TENSION LOAD
DIRECTION ARE AS INDICATED ON
REAR ISOMETRIC VIEW



05	22 DEC 15	PER EC-22871; ADDED LUBRICANT NOTE	PJS 18704
04	06 JAN 14	ADDED ALLOWABLE TENSION AND SHEAR CAPACITY DETAILS	JAVA
03	23 OCT 13	PER EC-12382; CHANGED BOLT TORQUE FROM 30 FT-LB TO 40 FT-LB	NJM
02	07 MAR 12	ADDED STANDARD MOUNTING METHODS NOTES	KDD
01	21 FEB 12	CHANGED ROCKER TO I-BEAM	KDD
REV	DATE:		BY:

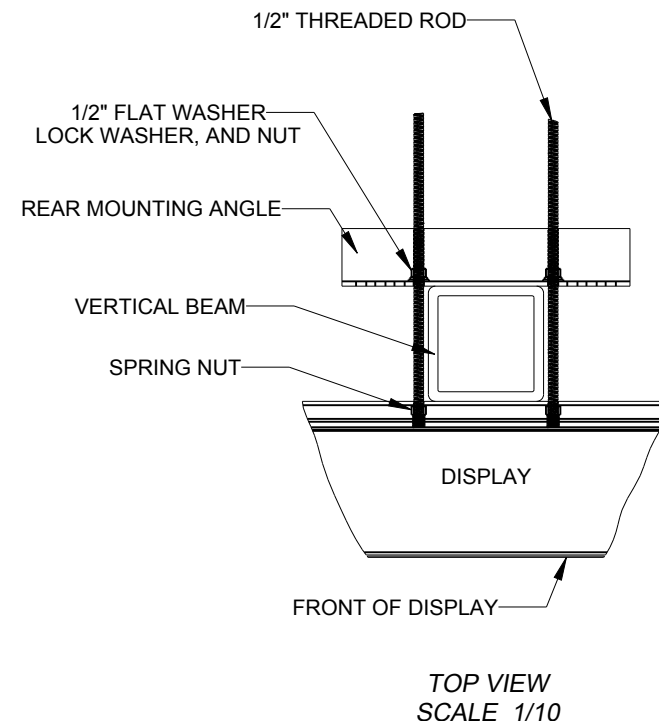
		<small>THE CONCEPTS EXPRESSED AND DETAILS SHOWN ON THIS DRAWING ARE CONFIDENTIAL AND PROPRIETARY. DO NOT REPRODUCE BY ANY MEANS WITHOUT THE EXPRESS WRITTEN CONSENT OF DAKTRONICS, INC. OR ITS WHOLLY OWNED SUBSIDIARIES. COPYRIGHT 2016 DAKTRONICS, INC. (USA)</small>				
PROJECT: OUTDOOR SCOREBOARD						
TITLE: P1647; I-BEAM CLAMP MOUNTING						
DATE: 22-DEC-15		DIM UNITS: INCHES [MILLIMETERS]		SHEET		REV
SCALE: 1/8		DO NOT SCALE DRAWING		1 OF 1		05
DESIGN: MCARSRU		JOB NO.		FUNC - TYPE - SIZE		1052565
DRAWN: MCARSRU		P1647		E - 07 - A		



STRUCTURAL NOTES:
- BOLT TORQUE: 30 FT-LB

NOTES:

- THREADED RODS RUN ALONG BOTH SIDES OF BEAM
- RODS DO NOT PASS THROUGH THE FLANGES OF THE BEAM
- NO DRILLING NECESSARY
- MAKE SURE SPRING NUT IS PERPENDICULAR TO CHANNEL OPENING ON SCOREBOARD

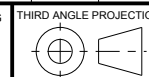


*****CRITICAL*****
DO NOT USE ANY LUBRICANT
ON ANY MOUNTING HARDWARE
OR WARRANTY WILL BE VOIDED

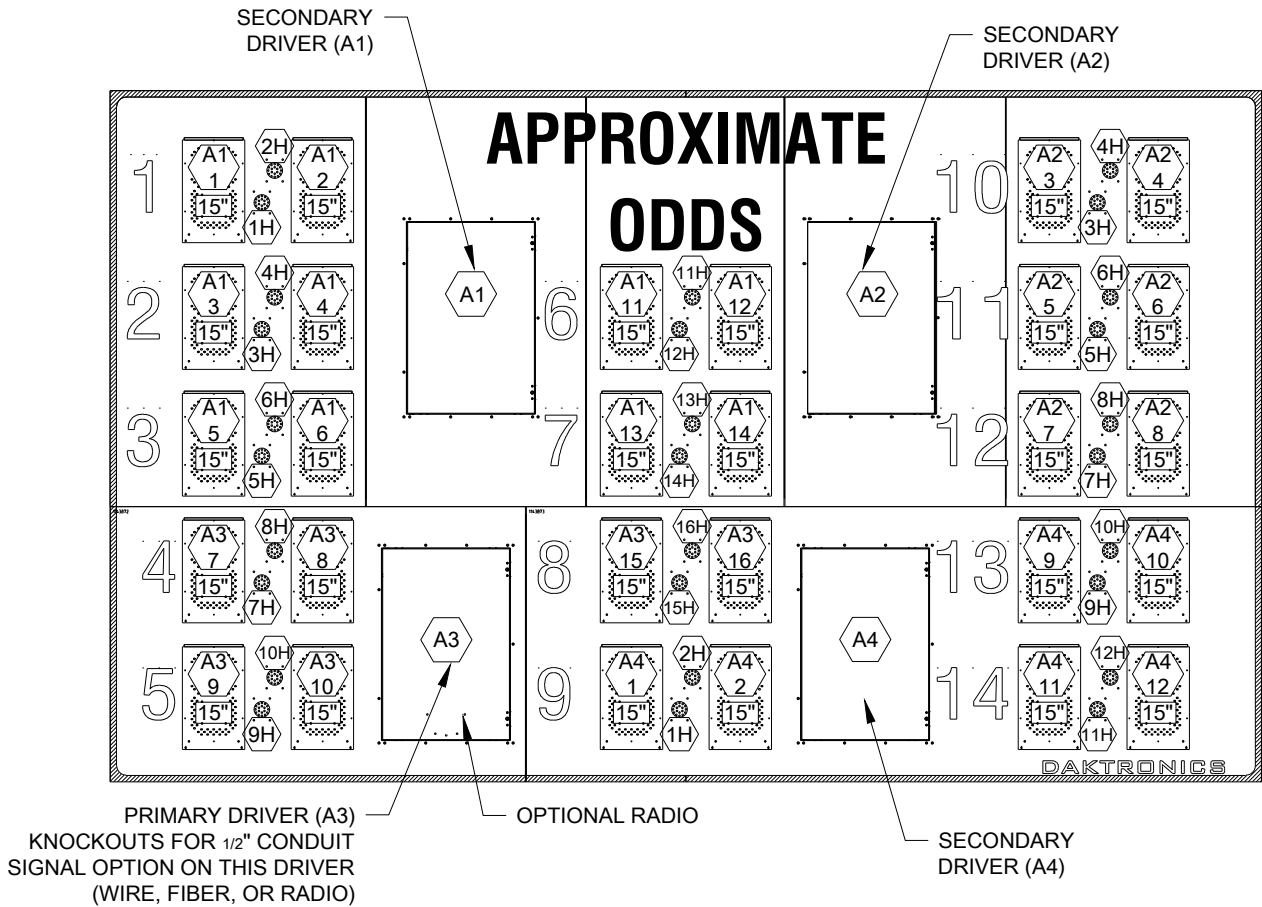
04	22 DEC 15	PER EC-22871; ADDED LUBRICANT WARNING	PJS 18704	
03	03 JULY 13	ADDED STRUCTURAL NOTE	TTF	
02	20 SEP 12	PER EC-7114; REMOVED CHAMFER FROM 0M-133259	LMG	
01	06 OCT 11	REPLACED VERTICAL I-BEAM WITH 6" X 6" SQUARE TUBE	JAVA	
REV	DATE:		BY:	



THE CONCEPTS EXPRESSED AND DETAILS SHOWN ON THIS DRAWING ARE CONFIDENTIAL AND PROPRIETARY. DO NOT REPRODUCE BY ANY MEANS WITHOUT THE EXPRESS WRITTEN CONSENT OF DAKTRONICS, INC. OR ITS WHOLLY OWNED SUBSIDIARIES. COPYRIGHT 2016 DAKTRONICS, INC. (USA)



PROJECT: OUTDOOR SCOREBOARDS				
TITLE: P1647; POLE MOUNTING OPTIONS				
DATE: 22-DEC-15	DIM UNITS: INCHES [MILLIMETERS]		SHEET	REV
SCALE: 1/5	DO NOT SCALE DRAWING		1 OF 1	04
DESIGN: DOPPELT	JOB NO.	FUNC - TYPE - SIZE	1048184	
DRAWN: DOPPELT	P1647	E - 10 - A		



FRONT VIEW


NOTES:

9H = SEGMENT DESIGNATION

A1 = DRIVER NUMBER

A1
1 = LED DRIVER NUMBER &
LED DRIVER CONNECTOR
WIRED TO THAT DIGIT.

15" = DIGIT SIZE

 DAKTRONICS, INC. BROOKINGS, SD 57006 DO NOT SCALE DRAWING		THE CONCEPTS EXPRESSED AND DETAILS SHOWN ON THIS DRAWING ARE CONFIDENTIAL AND PROPRIETARY. DO NOT REPRODUCE BY ANY MEANS WITHOUT THE EXPRESSED WRITTEN CONSENT OF DAKTRONICS, INC. COPYRIGHT 2013 DAKTRONICS, INC.	
PROJ: OUTDOOR EXTRUDED SCOREBOARDS			
TITLE: COMPONENT LOCATION; PM-2106-R/A/W			
DESIGN: KDRAGT		DRAWN: KDRAGT	
SCALE: 1=30		DATE: 19 JUL 13	
SHEET	REV	JOB NO:	FUNC - TYPE - SIZE
02	02	P 1374	E - 10 - A
1144530			1144530

REV 02	DATE: 20 AUG 20	PER CN-108226: REMOVE LABELS TO NEW STANDARD	BY: CJC
REV 01	DATE: 03 MAR 15	PER EC-17119, REMOVED DRIVER DETAILS, ADDED SIGNAL OPTION NOTE, CHANGED MASTER AND SLAVE DRIVER NAMES	BY: KDB