

DAKTRONICS PM-2102 PRODUCT SPECIFICATIONS

Optional 2nd
Electronic Caption



This outdoor pari-mutuel tote board section displays two WIN positions with up to 9999.99 in each position. The 8x64 electronic caption displays race status. Display shown with optional striping and amber PanaView® digits.

DIMENSIONS	# OF SECTIONS	UNCRATED WEIGHT	POWER (120 VAC)*
9'-0" H x 8'-0" W x 8" D (2.74 m, 2.44 m, 203 mm)	Two Total	405 lb (184 kg)	Red/Amber Digits: 235 Watts, 2 Amps White Digits: 485 Watts, 4.1 Amps
5'-0" H x 8'-0" W x 8" D (1.52 m, 2.44 m, 203 mm)	Top	180 lb (82 kg)	
4'-0" H x 8'-0" W x 8" D (1.22 m, 2.44 m, 203 mm)	Bottom	225 lb (102 kg)	

*Display requires a dedicated circuit. Models with 240 VAC power at half the indicated amperage are also offered (International Use Only).

Note: Optional 2nd electronic caption adds 80 lb (36 kg) to bottom section weight and 130 W (red/amber) or 260 W (white) to total power.

DIGITS

- All digits are 15" (381 mm) high.
- Select red, amber, or white LED digits.
- Display features robust weather-sealed digits (see [DD2495646](#)).
- Digits may be dimmed for night viewing.

CAPTIONS

- All captions are 12" (305 mm) high.
- Standard captions are vinyl, applied directly to the display face.
- Electronic caption is 10.6" (269 mm) high. LED color matches digit color.

DISPLAY COLOR

Choose from 150+ colors (from Martin Senour® paint book) at no additional cost.

CONSTRUCTION

Alcoa aluminum alloy 5052 for excellent corrosion resistance

PRODUCT SAFETY APPROVAL

ETL-listed to UL 48, tested to CSA standards, and CE-labeled

OPERATING TEMPERATURES

-22° to 122° Fahrenheit (-30° to 50° Celsius)

DAKTRONICS PM-2102 PRODUCT SPECIFICATIONS

CONTROL OPTIONS

Daktronics pari-mutuel displays are designed to be controlled by third-party tote software. Software providers must have permission to output data in a specific format for Daktronics displays. Contact Daktronics for approved providers. Refer to the documentation from the particular software provider for operating instructions.

MOUNTING

Hardware to mount display on two beams is included; hardware for more beams is at additional cost. Standard mounting uses I-beam clamps. Optional mounting method using angle brackets is also offered; maximum beam width is 12" (305 mm) and maximum beam depth is 22" (559 mm). Refer to attached drawings for more information on mounting methods.

SERVICE ACCESS

Digit panels and electronics are serviced from the front of the display.

GENERAL INFORMATION

100% solid state electronics are housed in an all aluminum cabinet. Display is shipped in two sections. Display power is to be provided on a dedicated circuit to prevent loss of race information due to failure of another component on the circuit. Specifications and pricing are subject to change without notice.

OPTIONS & ACCESSORIES

- Cabinet border striping
- Multiple caption and striping colors (see [DD2101644](#))
- Second electronic caption
- Optional angle bracket mounting method
- Advertising/identification panels
- Decorative accents
- Electronic message centers and video displays in multiple sizes

ADVERTISING/IDENTIFICATION PANELS

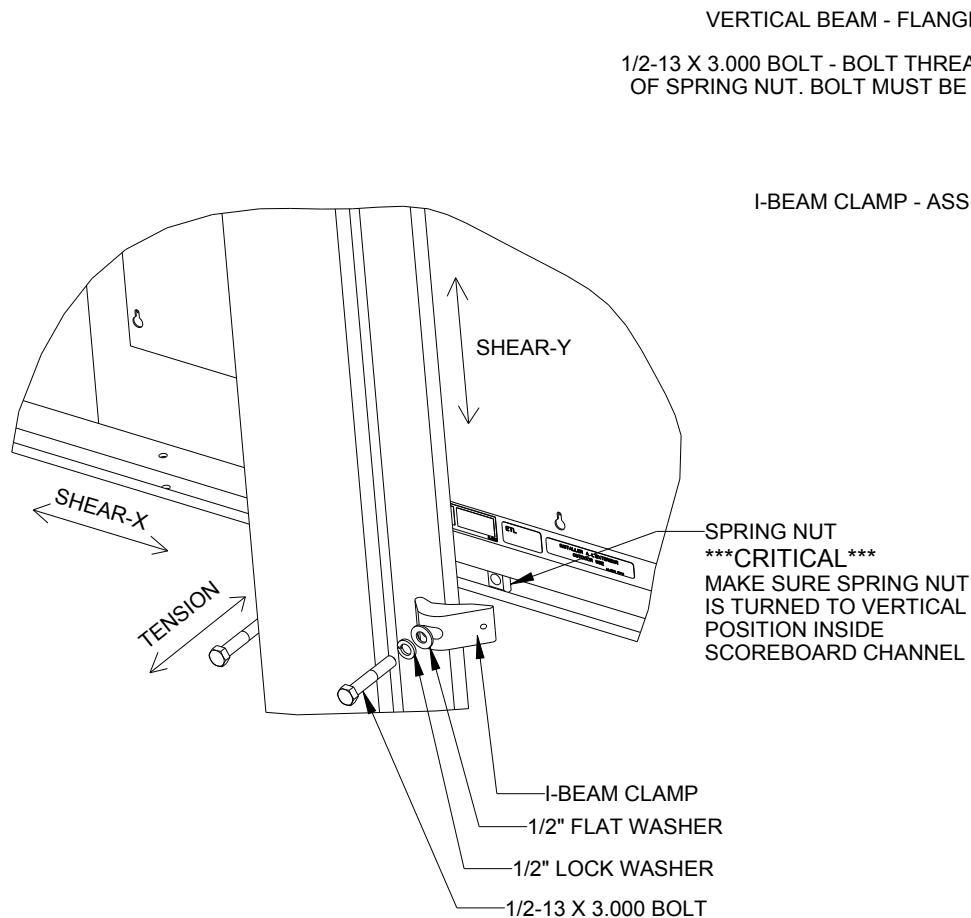
Backlit & Non-Backlit Top/Bottom:

- 1'-6" H x 8'-0" W (457 mm, 2.44 m)
- 2'-0" H x 8'-0" W (610 mm, 2.44 m)
- 2'-6" H x 8'-0" W (762 mm, 2.44 m)


For additional non-backlit panel sizes, see [SL-03761](#).

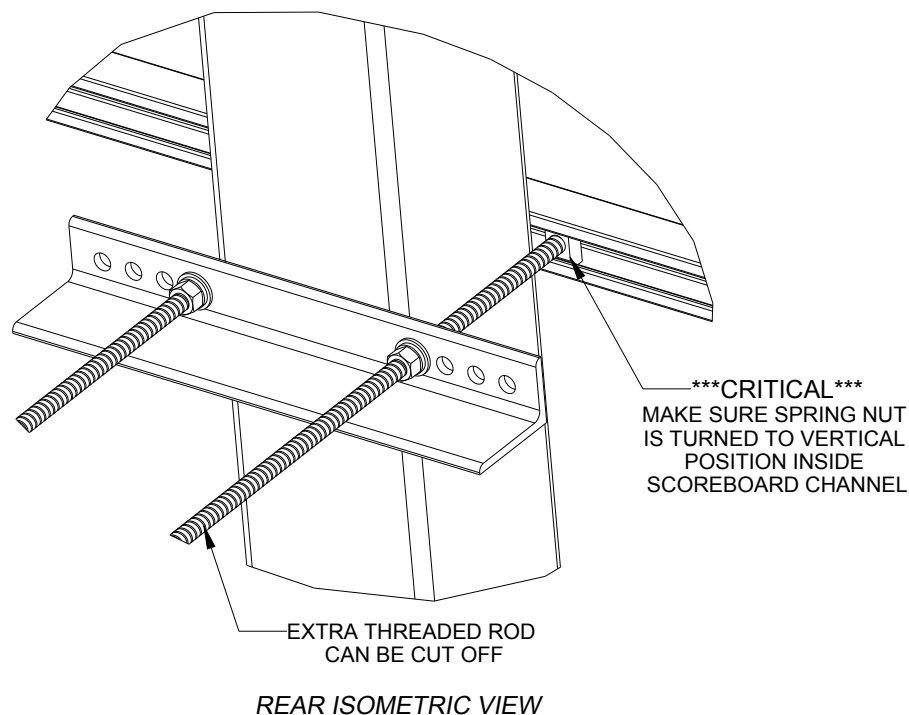
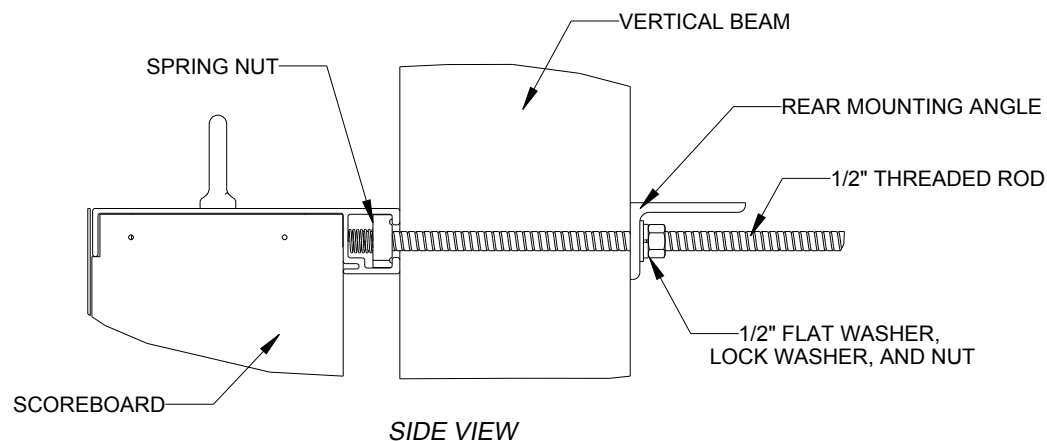
FOR ADDITIONAL INFORMATION

- Standard I-beam Mounting: DWG-1052565 (attached)
- Optional Pole Mounting: DWG-1048184 (attached)
- Component Locations: DWG-1144525 (attached)



05	22 DEC 15	PER EC-22871; ADDED LUBRICANT NOTE	PJS 18704	
04	06 JAN 14	ADDED ALLOWABLE TENSION AND SHEAR CAPACITY DETAILS	JAVA	
03	23 OCT 13	PER EC-12382; CHANGED BOLT TORQUE FROM 30 FT-LB TO 40 FT-LB	NJM	
02	07 MAR 12	ADDED STANDARD MOUNTING METHODS NOTES	KDD	
01	21 FEB 12	CHANGED ROCKER TO I-BEAM	KDD	
REV	DATE:		BY:	

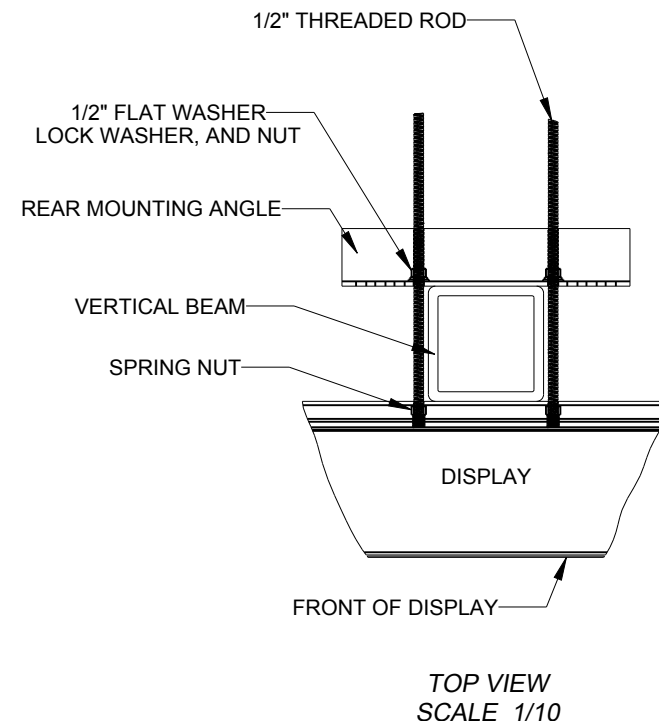
 DAKTRONICS		THE CONCEPTS EXPRESSED AND DETAILS SHOWN ON THIS DRAWING ARE CONFIDENTIAL AND PROPRIETARY. DO NOT REPRODUCE BY ANY MEANS WITHOUT THE EXPRESS WRITTEN CONSENT OF DAKTRONICS, INC. OR ITS WHOLLY OWNED SUBSIDIARIES. COPYRIGHT 2016 DAKTRONICS, INC. (USA)			
PROJECT: OUTDOOR SCOREBOARD					
TITLE: P1647; I-BEAM CLAMP MOUNTING					
DATE: 22-DEC-15		DIM UNITS: INCHES [MILLIMETERS]		SHEET	REV
SCALE: 1/8		DO NOT SCALE DRAWING		1 OF 1	05
DESIGN: MCARSRU		JOB NO.	FUNC - TYPE - SIZE	1052565	
DRAWN: MCARSRU		P1647	E - 07 - A		



STRUCTURAL NOTES:
- BOLT TORQUE: 30 FT-LB

NOTES:

- THREADED RODS RUN ALONG BOTH SIDES OF BEAM
- RODS DO NOT PASS THROUGH THE FLANGES OF THE BEAM
- NO DRILLING NECESSARY
- MAKE SURE SPRING NUT IS PERPENDICULAR TO CHANNEL OPENING ON SCOREBOARD

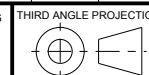


*****CRITICAL*****
DO NOT USE ANY LUBRICANT
ON ANY MOUNTING HARDWARE
OR WARRANTY WILL BE VOIDED

04	22 DEC 15	PER EC-22871; ADDED LUBRICANT WARNING	PJS 18704	
03	03 JULY 13	ADDED STRUCTURAL NOTE	TTF	
02	20 SEP 12	PER EC-7114; REMOVED CHAMFER FROM 0M-133259	LMG	
01	06 OCT 11	REPLACED VERTICAL I-BEAM WITH 6" X 6" SQUARE TUBE	JAVA	
REV	DATE:		BY:	

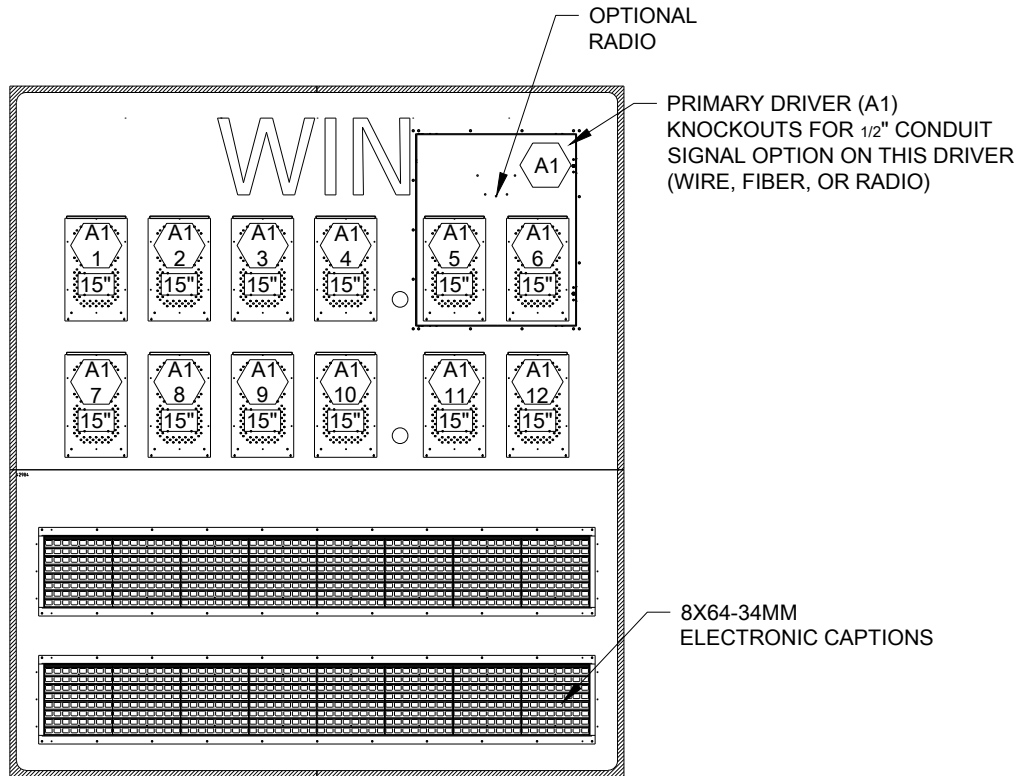


THE CONCEPTS EXPRESSED AND DETAILS SHOWN ON THIS DRAWING ARE CONFIDENTIAL AND PROPRIETARY. DO NOT REPRODUCE BY ANY MEANS WITHOUT THE EXPRESS WRITTEN CONSENT OF DAKTRONICS, INC. OR ITS WHOLLY OWNED SUBSIDIARIES. COPYRIGHT 2016 DAKTRONICS, INC. (USA)



PROJECT: OUTDOOR SCOREBOARDS				
TITLE: P1647; POLE MOUNTING OPTIONS				
DATE: 22-DEC-15	DIM UNITS: INCHES [MILLIMETERS]		SHEET	REV
SCALE: 1/5	DO NOT SCALE DRAWING		1 OF 1	04
DESIGN: DOPPELT	JOB NO.	FUNC - TYPE - SIZE	1048184	
DRAWN: DOPPELT	P1647	E - 10 - A		

PM-2102-R/A/W




FRONT VIEW

NOTES:

= DRIVER NUMBER

= LED DRIVER NUMBER & LED DRIVER CONNECTOR WIRED TO THAT DIGIT.

REV 02	DATE: 20 AUG 20	PER CN-108226: REMOVE LABELS TO NEW STANDARD	BY: CJC
REV 01	DATE: 03 MAR 15	PER EC-17119, REMOVED DRIVER DETAILS, ADDED SIGNAL OPTION NOTE CHANGED MASTER TO PRIMARY	BY: KDB

		DAKTRONICS, INC. BROOKINGS, SD 57006		THE CONCEPTS EXPRESSED AND DETAILS SHOWN ON THIS DRAWING ARE CONFIDENTIAL AND PROPRIETARY. DO NOT REPRODUCE BY ANY MEANS WITHOUT THE EXPRESSED WRITTEN CONSENT OF DAKTRONICS, INC. COPYRIGHT 2013 DAKTRONICS, INC.	
DO NOT SCALE DRAWING					
PROJ: OUTDOOR EXTRUDED SCOREBOARDS					
TITLE: COMPONENT LOCATION; PM-2102-R/A/W					
DESIGN: KDRAGT			DRAWN: KDRAGT		DATE: 19 JUL 13
SCALE: 1=30					
SHEET	REV	JOB NO:	FUNC - TYPE - SIZE	1144525	
	02	P1374	E - 10 - A		