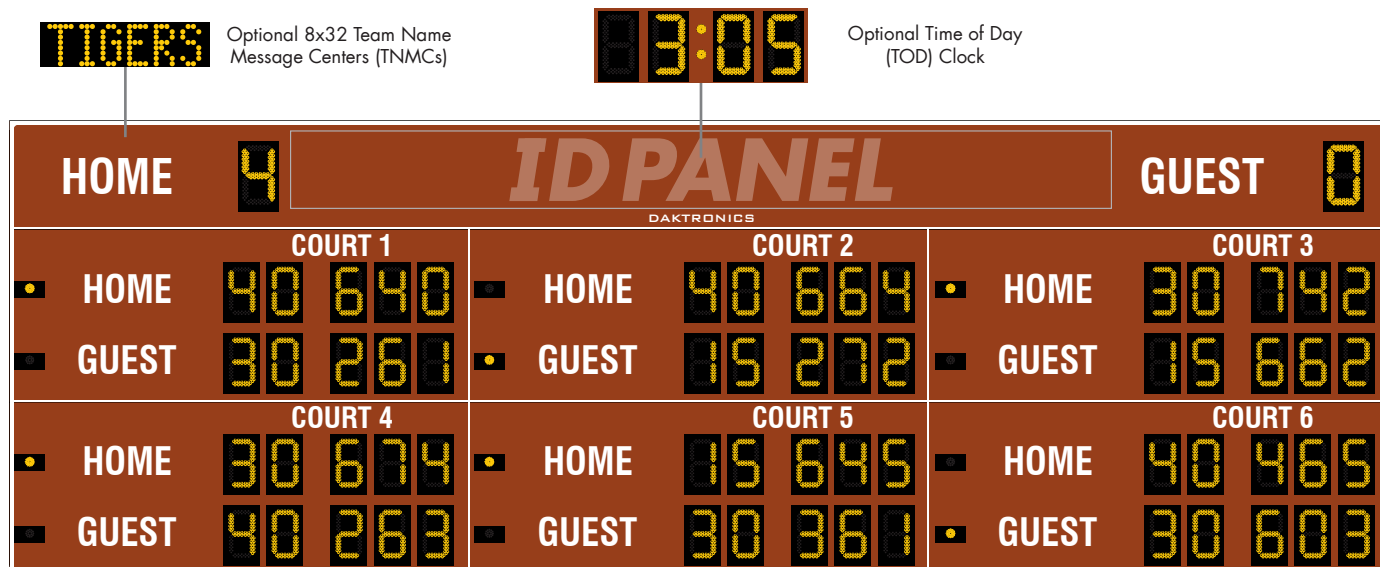


DAKTRONICS TN-2655 PRODUCT SPECIFICATIONS



This multi-court outdoor LED tennis scoreboard displays total HOME and GUEST team score to nine as well as HOME and GUEST serve indicators, game score and set scores to nine for up to three sets on six courts. Game score is displayed as 0, 15, 30, 40, Ad, or tiebreak scoring (1-99). Optional team name message centers (TNMCs) can display team or player names. Add an optional four-digit clock to display Time of Day. Scoreboard shown with amber PanaView® digits and optional striping.

DIMENSIONS	# OF SECTIONS
10'-6" H x 32'-0" W x 8" D (3.2 m, 9.75 m, 203 mm)	Three Total
2'-6" H x 32'-0" W x 8" D (762 mm, 9.75 m, 203 mm)	One Team Score
4'-0" H x 32'-0" W x 8" D (1.22 m, 9.75 m, 203 mm)	Two Court Scores

		VINYL CAPTIONS (STANDARD)	TNMCs & VINYL CAPTIONS
POWER*	Red/Amber Digits	610 Watts, 3.1 Amps	1100 Watts, 5.5 Amps
	White Digits	1320 Watts, 6.6 Amps	2440 Watts, 12.2 Amps
UNCRATED WEIGHT	Team Score	320 lb (145 kg)	400 lb (181 kg)
	Court Scores	512 lb (232 kg)	752 lb (341 kg)
	Total	1344 lb (609 kg)	1904 lb (864 kg)

**Scoreboard requires a dedicated circuit (120/240/208-2P); Amps shown for high leg.*

DIGITS & INDICATORS

- Team HOME and GUEST and optional clock digits are 18" (457 mm). All court digits are 15" (381 mm) high. All indicators are 2" (51 mm) in diameter.
- Select red, amber, or white LED digits and indicators.
- Scoreboard features robust weather-sealed digits (see [DD2495646](#)).
- Digits may be dimmed for night viewing.

DISPLAY COLOR

Choose from 150+ colors (from Martin Senour® paint book) at no additional cost.

CONSTRUCTION

Alcoa aluminum alloy 5052 for excellent corrosion resistance

CAPTIONS

- Team HOME and GUEST captions are 10" (254) high. Court HOME and GUEST captions are 8" (203 mm) high. COURT # captions are 6" (152 mm) high.
- Standard captions are vinyl, applied to the display face.
- Optional TNMCs are 10.6" (269 mm) high.

PRODUCT SAFETY APPROVAL

ETL-listed to UL 48, tested to CSA standards, and CE-labeled

OPERATING TEMPERATURES

- Display: -22° to 122° Fahrenheit (-30° to 50° Celsius)
- Console: 32° to 130° Fahrenheit (0° to 54° Celsius)

WWW.DAKTRONICS.COM E-MAIL: SALES@DAKTRONICS.COM

201 Daktronics Drive, PO Box 5128, Brookings, SD 57006
Phone: 1-800-325-8766 or 605-692-0200 Fax: 605-697-4746
DD2731394 091820 Page 1 of 7

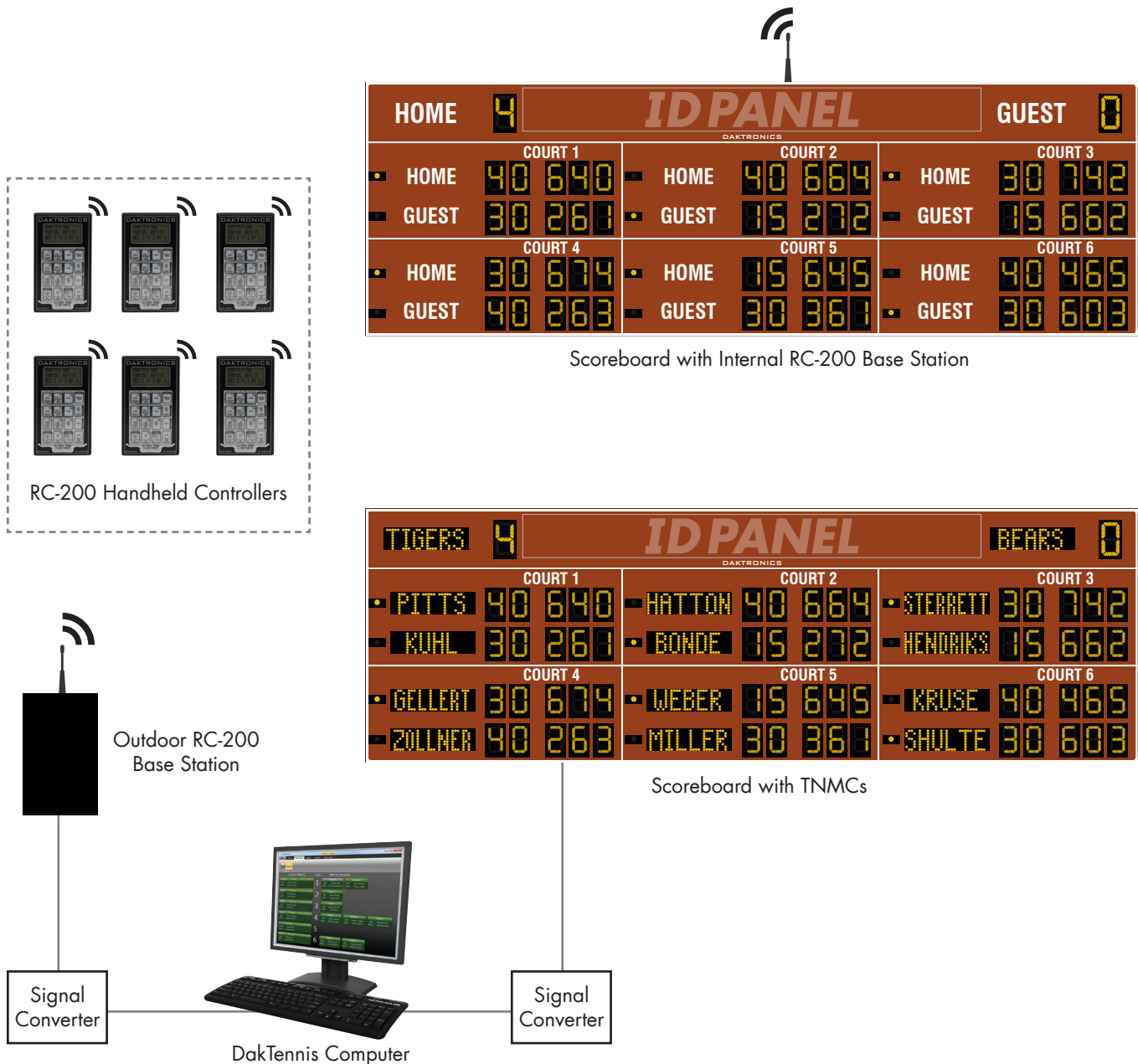


DAKTRONICS TN-2655 PRODUCT SPECIFICATIONS

CONTROL CONSOLES	CONTROL OPTIONS
RC-200 (see DD3715714)	Standard wireless handheld controller features 2.4 GHz spread spectrum radio with 64 non-interfering channels and 8-10 hours of operation via internal rechargeable battery. <i>Not compatible with Team Name Message Centers.</i>
RC-200 & DakTennis Software (see SL-06819)	The DakTennis™ software tracks scores and team or player names for each court. System also includes external RC-200 base station, signal converters and cabling to connect to the scoreboard. <i>This system is required for multi-court scoreboards with Team Name Message Centers.</i>

CONTROL DIAGRAMS

Refer to the diagrams below to see the available tennis control systems, and select one that best fits the needs of your facility.
 Note that placement of scoreboard antennas is for illustrative purposes only.



WWW.DAKTRONICS.COM E-MAIL: SALES@DAKTRONICS.COM

201 Daktronics Drive, PO Box 5128, Brookings, SD 57006
 Phone: 1-800-325-8766 or 605-692-0200 Fax: 605-697-4746
 DD2731394 091820 Page 2 of 7



DAKTRONICS TN-2655 PRODUCT SPECIFICATIONS

MOUNTING

Scoreboard is typically mounted on three vertical beams or poles. Hardware to mount scoreboard on three beams is included; hardware for more beams is at additional cost. Standard mounting uses I-beam clamps. Optional mounting method using angle brackets is also offered; maximum beam width is 12" (305 mm) and maximum beam depth is 22" (559 mm). Refer to attached drawings for more information on mounting methods.

GENERAL INFORMATION

Scoreboard provides scoring capabilities for two teams on six courts. 100% solid state electronics are housed in an all aluminum cabinet. Scoreboard is shipped in three sections. Scoreboard power is to be provided on a dedicated circuit to prevent loss of game information due to failure of another component on the circuit. Specifications and pricing are subject to change without notice.

OPTIONS & ACCESSORIES

- Scoreboard border striping
- Multiple caption and striping colors (see [DD2101644](#))
- Team name caption in place of HOME *
- Programmable Team Name Message Centers (see [SL-04342](#))
- 18" (457 mm) Time of Day (TOD) clock with Standalone Time of Day option (scoreboard acts as a clock when control console is unplugged/off) OR one 21.5" (546 mm) tall x 19'-0" (5.79 m) wide logo/sponsor area on the face of the display
- Optional angle bracket mounting method
- Advertising/identification panels
- Decorative accents
- Electronic message centers and video displays in multiple sizes

* Not available with TNMCs

ADVERTISING/IDENTIFICATION PANELS

Backlit & Non-Backlit:

1'-6" H x 32'-0" W (457 mm, 9.75 m)

2'-0" H x 32'-0" W (610 mm, 9.75 m)

2'-6" H x 32'-0" W (762 mm, 9.75 m)

For additional non-backlit panel sizes, see [SL-03761](#).

FOR ADDITIONAL INFORMATION

- Installation Specifications: DWG-1189180 (attached)
- Standard I-beam Mounting: DWG-1052565 (attached)
- Optional Pole Mounting: DWG-1048184 (attached)
- Component Locations: DWG-1107701 (attached)
- Architectural Specifications: See [SL-08633](#)

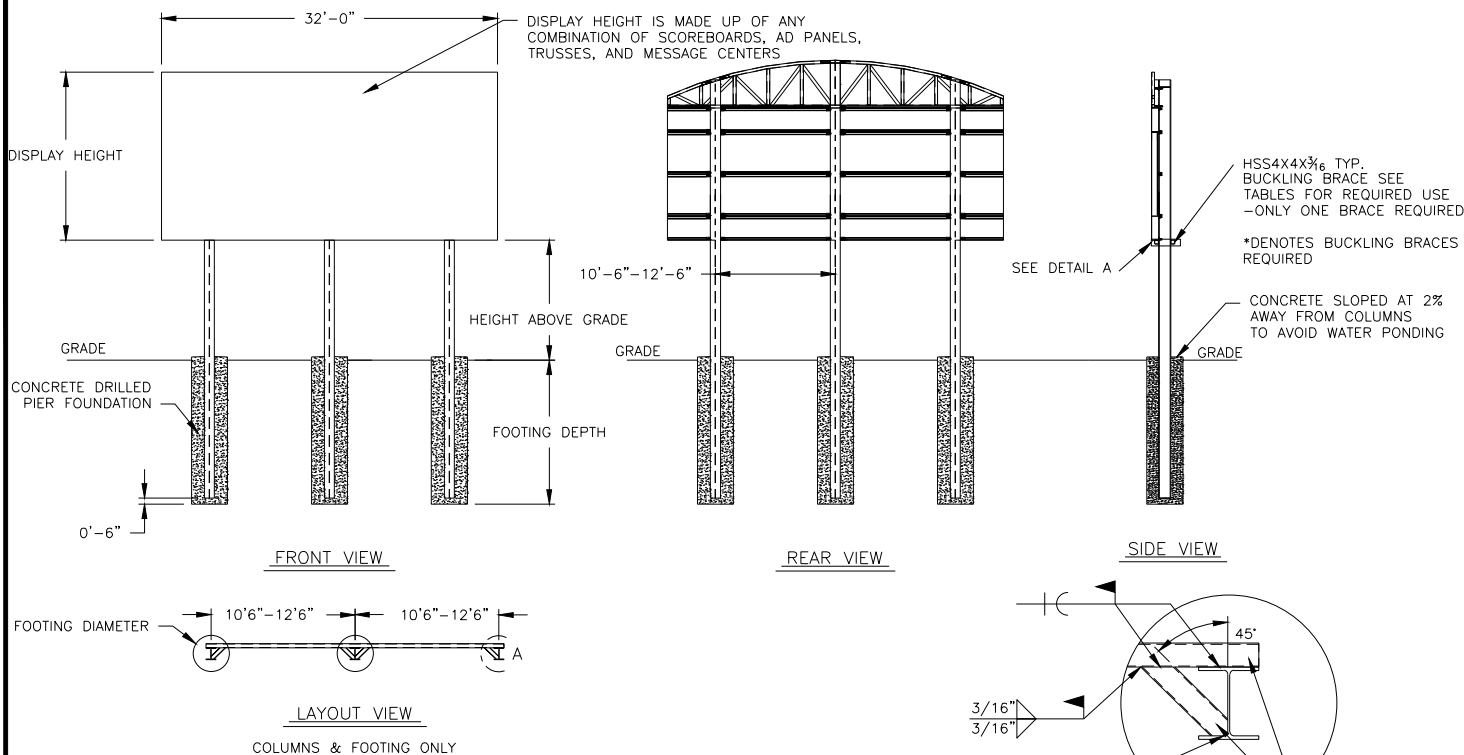


TABLE A – MOUNTING

EXPOSURE B

HEIGHT ABOVE GRADE = 10'						HEIGHT ABOVE GRADE = 15'					
DISPLAY HEIGHT (FT)		DESIGN WIND VELOCITY				DISPLAY HEIGHT (FT)		DESIGN WIND VELOCITY			
		115 MPH	130 MPH	150 MPH	170 MPH			115 MPH	130 MPH	150 MPH	170 MPH
8	COLUMN FOOTING	W10X33 3.0'X7.5'	W14X38 3.0'X8.0'	W12X40 3.0'X9.0'	W14X48 3.0'X10.0'	8	COLUMN FOOTING	W14X43 3.0'X8.5'	W10X49 3.0'X9.0'	W12X58 3.0'X10.0'	W12X65 3.0'X11.5'
10	COLUMN FOOTING	W10X39 3.0'X8.5'	W14X43 3.0'X9.0'	W12X53 3.0'X10.0'	W14X61 3.0'X11.0'	10	COLUMN FOOTING	W12X53 3.0'X9.0'	W12X58 3.0'X10.0'	W16X67 3.0'X11.0'	W18X76 4.0'X11.0'
12	COLUMN FOOTING	W14X48 3.0'X9.0'	W12X53 3.0'X10.0'	W14X61 3.0'X11.0'	W16X67 3.0'X12.0'	12	COLUMN FOOTING	W14X61 3.0'X10.0'	W16X67 3.0'X11.0'	W18X76 4.0'X11.0'	W18X97 4.0'X12.0'
14	COLUMN FOOTING	W12X53 3.0'X9.5'	W14X61 3.0'X10.5'	W18X76 4.0'X10.5'	W27X84 5.0'X11.0'	14*	COLUMN FOOTING	W18X55 4.0'X9.5'	W21X62 4.0'X10.5'	W24X68 4.0'X11.5'	W24X84 4.0'X13.5'
16	COLUMN FOOTING	W14X61 3.0'X10.5'	W12X72 3.0'X11.5'	W18X86 4.0'X11.5'	W18X97 3.0'X18.5'	16*	COLUMN FOOTING	W21X62 4.0'X10.5'	W24X68 4.0'X11.5'	W24X84 4.0'X13.0'	W30X90 5.0'X13.0'
18*	COLUMN FOOTING	W21X48 4.0'X10.0'	W21X55 4.0'X11.0'	W21X68 4.0'X12.0'	W24X76 4.0'X14.0'	18*	COLUMN FOOTING	W21X68 4.0'X11.0'	W18X76 4.0'X12.0'	W27X84 5.0'X12.5'	W30X99 5.0'X14.0'
20*	COLUMN FOOTING	W18X55 4.0'X10.5'	W21X62 4.0'X11.5'	W18X76 4.0'X13.0'	W24X84 4.0'X15.5'	20*	COLUMN FOOTING	W24X68 4.0'X11.5'	W24X84 4.0'X13.0'	W30X90 5.0'X13.5'	W27X114 5.0'X15.5'

FOOTING DIMENSIONS = DIAMETER X DEPTH

* DENOTES ADDITIONAL BRACES REQUIRED AT THE MID HEIGHT OF DISPLAY

EXPOSURE C

HEIGHT ABOVE GRADE = 10'				HEIGHT ABOVE GRADE = 15'			
DISPLAY HEIGHT (FT)		DESIGN WIND VELOCITY		DISPLAY HEIGHT (FT)		DESIGN WIND VELOCITY	
		115 MPH	140 MPH			115 MPH	140 MPH
8	COLUMN FOOTING	W10X39 3.0'X8.5'	W14X48 3.0'X10.0'	8	COLUMN FOOTING	W12X53 3.0'X9.5'	W12X65 3.0'X11.0'
10	COLUMN FOOTING	W14X48 3.0'X9.5'	W12X58 3.0'X11.0'	10	COLUMN FOOTING	W14X61 3.0'X10.5'	W18X76 4.0'X11.0'
12	COLUMN FOOTING	W12X58 3.0'X10.5'	W16X67 3.0'X12.0'	12	COLUMN FOOTING	W14X74 3.0'X11.5'	W14X90 3.0'X13.5'
14	COLUMN FOOTING	W12X65 3.0'X9.0'	W18X76 4.0'X11.0'	14*	COLUMN FOOTING	W16X67 3.0'X12.0'	W24X84 4.0'X13.0'
16	COLUMN FOOTING	W18X76 4.0'X10.5'	W18X97 4.0'X12.5'	16*	COLUMN FOOTING	W24X68 4.0'X11.5'	W30X90 5.0'X12.5'
18*	COLUMN FOOTING	W21X62 4.0'X11.5'	W24X76 4.0'X16.5'	18*	COLUMN FOOTING	W24X84 4.0'X12.5'	W30X99 5.0'X14.0'
20*	COLUMN FOOTING	W21X68 4.0'X12.0'	W24X84 4.0'X15.0'	20*	COLUMN FOOTING	W27X84 5.0'X12.0'	W24X104 4.0'X17.0'

FOOTING DIMENSIONS = DIAMETER X DEPTH

* DENOTES ADDITIONAL BRACES REQUIRED AT THE MID HEIGHT OF DISPLAY

NOTES:

1. FOOTING AND COLUMN SIZES ARE SUGGESTIONS ONLY, PROVIDED TO ASSIST WITH ESTIMATING INSTALLATION COSTS AND ARE NOT INTENDED FOR CONSTRUCTION PURPOSES. THE DESIGN MUST BE CERTIFIED BY A PROFESSIONAL ENGINEER LICENSED IN THE STATE OF THE INSTALLATION BEFORE THEY CAN BE USED FOR FABRICATION OR ERECTION.

2. INTERNATIONAL BUILDING CODE 2012 USED IN DESIGN OF COLUMNS AND FOOTINGS WITH IMPORTANCE FACTOR=1, Kzt=1.0, Kd=0.85, G=0.85. SEISMIC DESIGN WAS NOT CONSIDERED.

3. FOOTING DIMENSIONS ARE BASED ON ASSUMED SOIL CLASS 4 (ALLOWABLE LATERAL BEARING PRESSURE OF 150 psf).

4. STRUCTURAL STEEL IS GRADE A992 (50 ksi) STEEL. CONCRETE SHALL HAVE A MINIMUM 28 DAY COMPRESSIVE STRENGTH OF 2500 psi.

5. THE AVERAGE DISPLAY WEIGHT FOR A LAYOUT CAN NOT EXCEED 8 PSF.

6. DAKTRONICS INC. IS NOT RESPONSIBLE FOR STRUCTURES DESIGNED AND INSTALLED BY OTHERS.

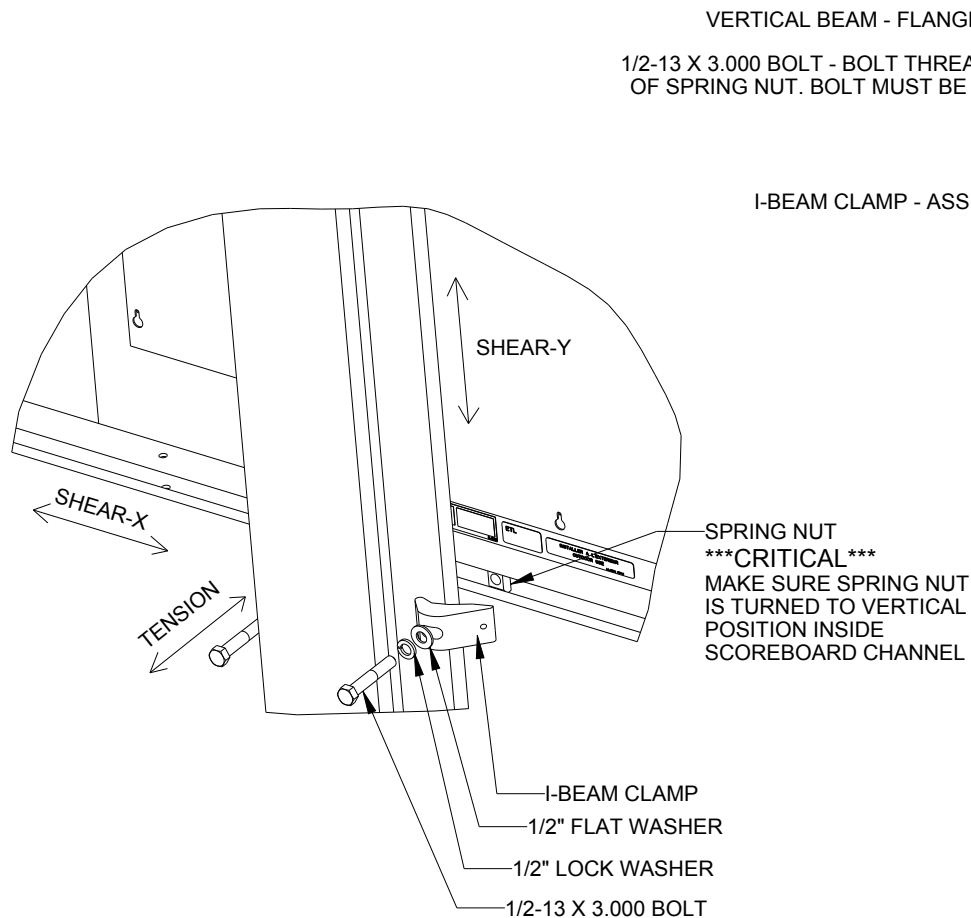
7. LOCAL BUILDING OFFICIALS SHOULD BE CONTACTED TO DETERMINE THE WIND SPEED AND EXPOSURE CATEGORY FOR THE PROPOSED SIGN LOCATION. THE EXPOSURE CATEGORY C IS DEFINED AS:

EXPOSURE B – URBAN AND SUBURBAN AREAS, OR OTHER TERRAIN WITH NUMEROUS SPACED OBSTRUCTIONS HAVING THE SIZE OF SINGLE-FAMILY DWELLINGS OR LARGER. THESE CONDITIONS MUST PREVAIL FOR A DISTANCE FROM THE SIGN OF AT LEAST 2,600 ft OR 20 TIMES THE SIGN HEIGHT, WHICHEVER IS GREATER

EXPOSURE C – OPEN TERRAIN WITH SCATTERED OBSTRUCTIONS HAVING HEIGHTS GENERALLY LESS THAN 30 FT. THIS CATEGORY INCLUDES FLAT OPEN COUNTRY, GRASSLANDS, AND ALL WATER SURFACES IN HURRICANE PRONE REGIONS.

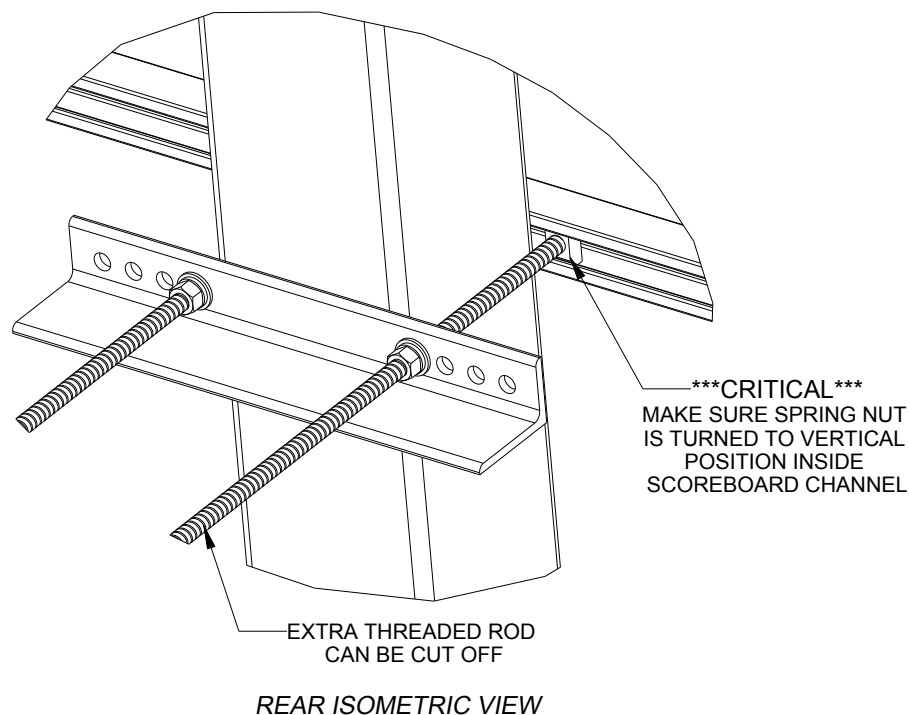
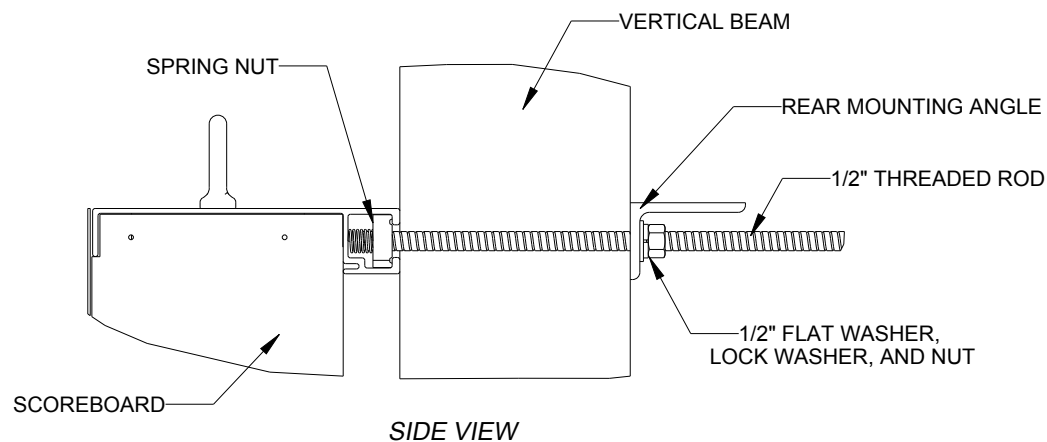
8. FOR SPECIFIC PRODUCT DETAILS ON WEIGHT, MOUNTING, ETC. REFER TO THE INDIVIDUAL PRODUCT SPECIFICATION SHEETS.

		DAKTRONICS, INC. BROOKINGS, SD 57006		THE CONCEPTS EXPRESSED AND DETAILS SHOWN ON THIS DRAWING ARE CONFIDENTIAL AND PROPRIETARY. DO NOT REPRODUCE BY ANY MEANS WITHOUT THE EXPRESS WRITTEN CONSENT OF DAKTRONICS, INC. COPYRIGHT 2014 DAKTRONICS, INC.	
		DO NOT SCALE DRAWING			
PROJ: OUTDOOR SCOREBOARD INSTALLATION TITLE: 32' WIDTH SCOREBOARD INSTALLATION SPECS.					
DESIGN: TTASCHN		DRAWN: TTASCHN		DATE: 22JUL14	
SCALE: 1/16" = 1'					
SHEET		REV		JOB NO:	
00		P1538		FUNC-TYPE-SIZE	
1189180		E-10-A			



05	22 DEC 15	PER EC-22871; ADDED LUBRICANT NOTE	PJS 18704	
04	06 JAN 14	ADDED ALLOWABLE TENSION AND SHEAR CAPACITY DETAILS	JAVA	
03	23 OCT 13	PER EC-12382; CHANGED BOLT TORQUE FROM 30 FT-LB TO 40 FT-LB	NJM	
02	07 MAR 12	ADDED STANDARD MOUNTING METHODS NOTES	KDD	
01	21 FEB 12	CHANGED ROCKER TO I-BEAM	KDD	
REV	DATE:		BY:	

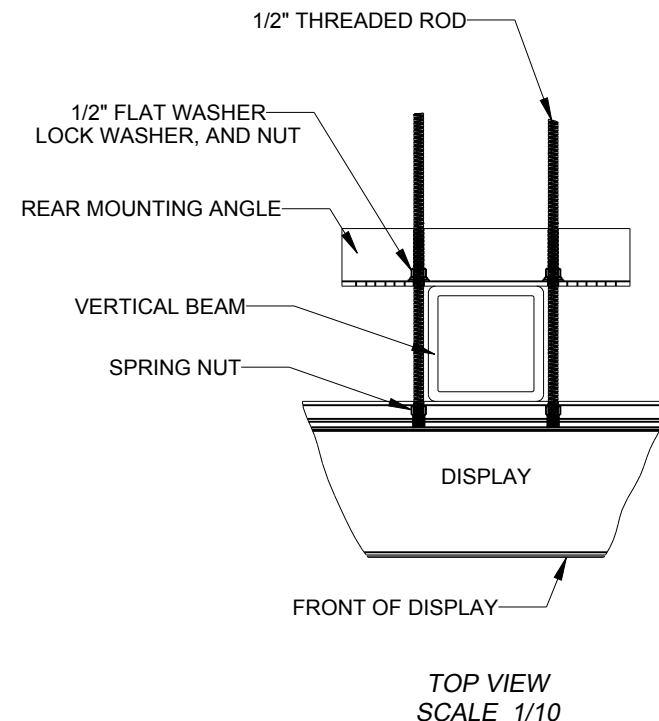
 DAKTRONICS		THE CONCEPTS EXPRESSED AND DETAILS SHOWN ON THIS DRAWING ARE CONFIDENTIAL AND PROPRIETARY. DO NOT REPRODUCE BY ANY MEANS WITHOUT THE EXPRESS WRITTEN CONSENT OF DAKTRONICS, INC. OR ITS WHOLLY OWNED SUBSIDIARIES. COPYRIGHT 2016 DAKTRONICS, INC. (USA)			
PROJECT: OUTDOOR SCOREBOARD					
TITLE: P1647; I-BEAM CLAMP MOUNTING					
DATE: 22-DEC-15		DIM UNITS: INCHES [MILLIMETERS]		SHEET	REV
SCALE: 1/8		DO NOT SCALE DRAWING		1 OF 1	05
DESIGN: MCARSRU		JOB NO.	FUNC - TYPE - SIZE	1052565	
DRAWN: MCARSRU		P1647	E - 07 - A		



STRUCTURAL NOTES:
- BOLT TORQUE: 30 FT-LB

NOTES:

- THREADED RODS RUN ALONG BOTH SIDES OF BEAM
- RODS DO NOT PASS THROUGH THE FLANGES OF THE BEAM
- NO DRILLING NECESSARY
- MAKE SURE SPRING NUT IS PERPENDICULAR TO CHANNEL OPENING ON SCOREBOARD

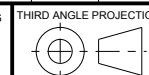


*****CRITICAL*****
DO NOT USE ANY LUBRICANT
ON ANY MOUNTING HARDWARE
OR WARRANTY WILL BE VOIDED

04	22 DEC 15	PER EC-22871; ADDED LUBRICANT WARNING	PJS 18704	
03	03 JULY 13	ADDED STRUCTURAL NOTE	TTF	
02	20 SEP 12	PER EC-7114; REMOVED CHAMFER FROM 0M-133259	LMG	
01	06 OCT 11	REPLACED VERTICAL I-BEAM WITH 6" X 6" SQUARE TUBE	JAVA	
REV	DATE:		BY:	

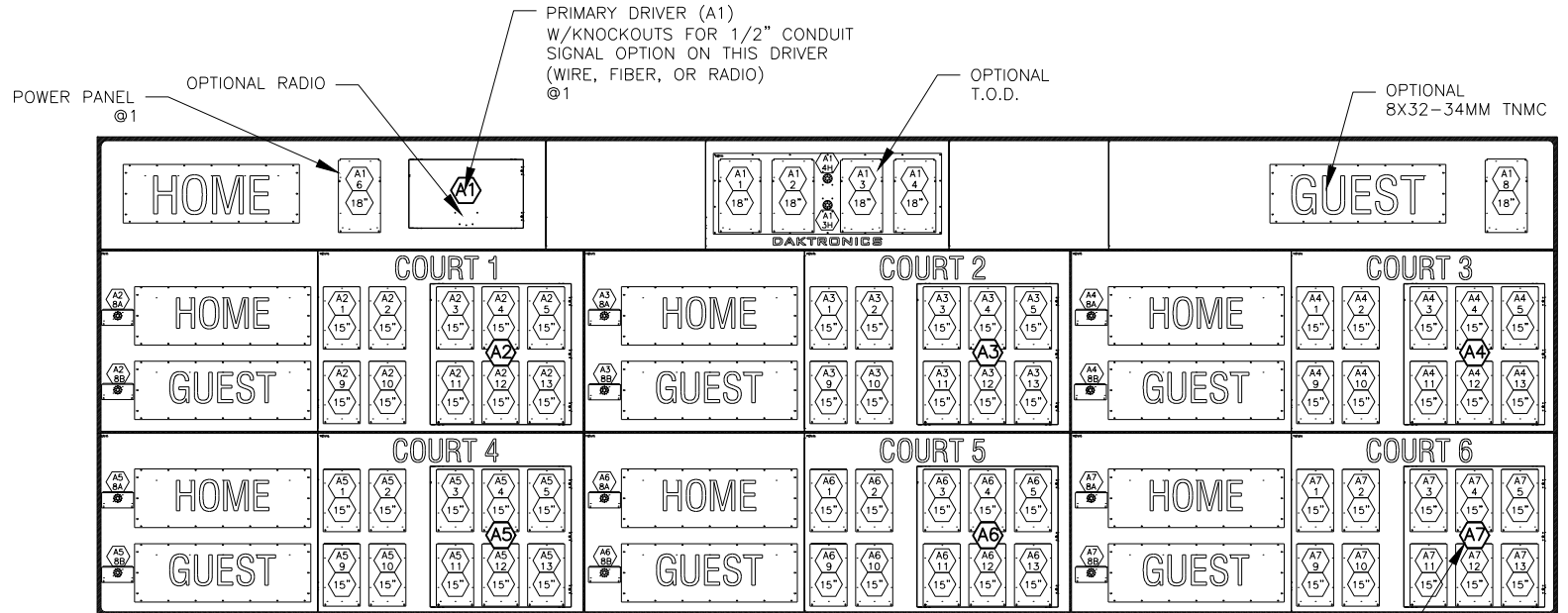


THE CONCEPTS EXPRESSED AND DETAILS SHOWN ON THIS DRAWING ARE CONFIDENTIAL AND PROPRIETARY. DO NOT REPRODUCE BY ANY MEANS WITHOUT THE EXPRESS WRITTEN CONSENT OF DAKTRONICS, INC. OR ITS WHOLLY OWNED SUBSIDIARIES. COPYRIGHT 2016 DAKTRONICS, INC. (USA)



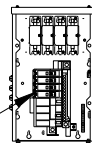
PROJECT: OUTDOOR SCOREBOARDS				
TITLE: P1647; POLE MOUNTING OPTIONS				
DATE: 22-DEC-15	DIM UNITS: INCHES [MILLIMETERS]		SHEET	REV
SCALE: 1/5	DO NOT SCALE DRAWING		1 OF 1	04
DESIGN: DOPPELT	JOB NO.	FUNC - TYPE - SIZE	1048184	
DRAWN: DOPPELT	P1647	E - 10 - A		

TN-2655-R/A/W



FRONT VIEW

SECONDARY DRIVERS @6



POWER PANEL @1
(4 BREAKER, 1PH,
120V/240V, W/FILTERS)
(WILL ACCEPT
120/208-2P ALSO)

DETAIL A
SCALE 2X

NOTES:

- = LED DRIVER NUMBER & LED DRIVER CONNECTOR WIRED TO THAT DIGIT
- = DIGIT SIZE
- = DRIVER NUMBER
- = SEGMENTATION

REV 01	DATE: 09 OCT 13	PER EC-12183, UPDATED ARROW INDICATORS TO 2" INDICATORS	BY: KDD
REV 02	DATE: 02 MAR 15	PER EC-17119, REMOVED DETAIL VIEWS AND UPDATED MASTERS/LAVE TO PRIMARY/SECONDARY	BY: ZSW
REV 03	DATE: 13 AUG 20	PER CN-108042, REMOVED LABELS TO MOVE TO NEW STANDARD	BY: TAN
<div> <p>DAKTRONICS, INC. BROOKINGS, SD 57006</p> <p>DO NOT SCALE DRAWING</p> <p>THE CONCEPTS EXPRESSED AND DETAILS SHOWN ON THIS DRAWING ARE CONFIDENTIAL AND PROPRIETARY. DO NOT REPRODUCE BY ANY MEANS WITHOUT THE EXPRESSED WRITTEN CONSENT OF DAKTRONICS, INC. COPYRIGHT 2012 DAKTRONICS, INC.</p> </div>			
<div> <p>PROJ: OUTDOOR EXTRUDED SCOREBOARDS</p> <p>TITLE: COMPONENT LOCATION: TN-2655-R/A/W</p> <p>DESIGN: JVANAR</p> <p>SCALE: 1/50</p> <p>SHEET 03</p> <p>REV P1164</p> <p>JOB NO. E-08-A</p> <p>DATE: 30 JUL 12</p> <p>1107701</p> </div>			