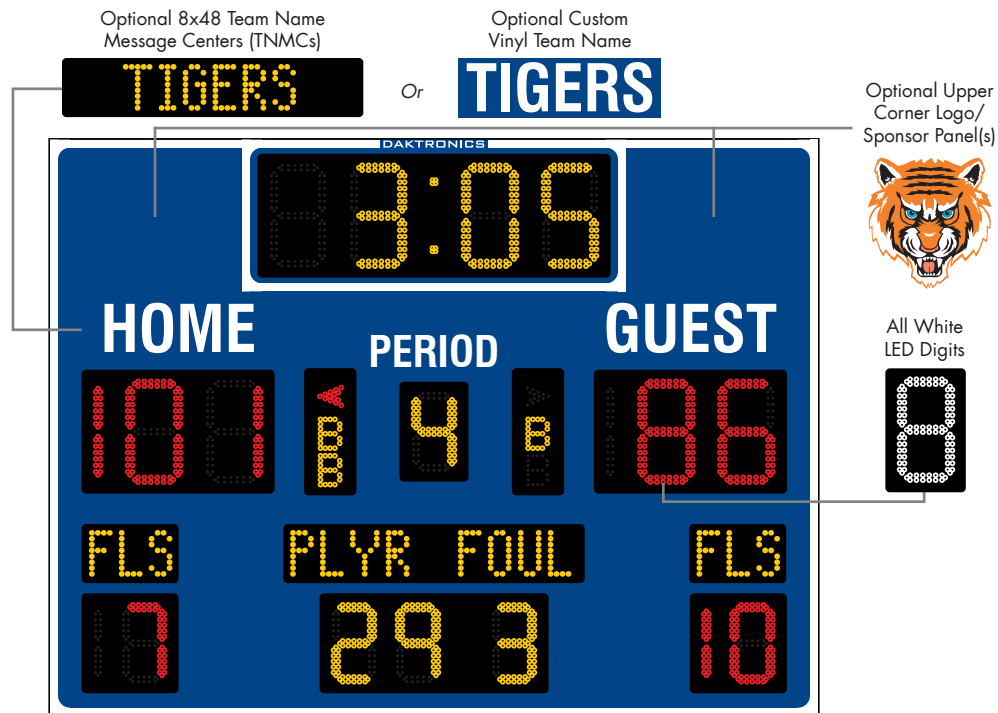


DAKTRONICS BB-2153 PRODUCT SPECIFICATIONS



This indoor single-sided LED basketball scoreboard displays period time to 99:59, HOME and GUEST scores to 199, PERIOD to nine, PLYR (player) number to 99, player FOUL to nine, team FLS (fouls) to 19 and indicates possession and bonus. Electronic captions automatically change when volleyball and wrestling modes are selected. When period time is less than one minute, the scoreboard displays time to 1/10 of a second.

CAPTION OPTIONS	POWER (120 VAC)*	UNCRATED WEIGHT	DIMENSIONS
VINYL & ELECTRONIC	260 Watts, 2.2 Amps	195 lb (88 kg)	6'-0" H x 8'-0" W x 6" D (1.83 m x 2.44 m x 152 mm)
VINYL, ELECTRONIC & TNMCS	320 Watts, 2.7 Amps	210 lb (95 kg)	

*Models with 240 VAC power at half the indicated amperage are also offered (International Use Only).

DIGITS & INDICATORS

- Clock and score digits are 13" (330 mm) high. All other digits are 10" (254 mm) high. Bonus indicators are 4" (102 mm) high and possession arrows are 3" (76 mm) high.
- Scoreboard features PanaView® LED digit technology.
- Scoreboard comes with choice of LED colors:
 - > **Red/Amber LEDs:** clock, PERIOD, PLYR/FOUL, Bonus indicators, electronic captions and optional TNMCs are amber. Scores and FLS digits and possession indicators are red.
 - > **White LEDs:** all digits, indicators, electronic captions and optional TNMCs are white.

CAPTIONS & STRIPING

- HOME and GUEST captions, electronic captions and optional TNMCs are 6" (152 mm) high. PERIOD caption is 4" (102 mm) high.
- Standard captions and border striping are white vinyl. Choose another vinyl color at no additional cost (see [DD2101644](#)).

DISPLAY COLOR

Choose a color from the Daktronics standard paint book (see [SL-02730](#)).

CONSTRUCTION

Durable, lightweight aluminum Tuff Sport® cabinet withstands high-velocity impact from air-filled sports balls without the need for protective screens.

PRODUCT SAFETY APPROVAL

ETL-listed, tested to CSA standards, and CE-labeled
for indoor use only

OPERATING TEMPERATURES

- Display: -22° to 122° Fahrenheit (-30° to 50° Celsius)
- Console: 32° to 130° Fahrenheit (0° to 54° Celsius)

WWW.DAKTRONICS.COM E-MAIL: SALES@DAKTRONICS.COM

201 Daktronics Drive, PO Box 5128, Brookings, SD 57006
Phone: 1-800-325-8766 or 605-692-0200 Fax: 605-697-4746
DD2213495 011725 Page 1 of 4



DAKTRONICS BB-2153 PRODUCT SPECIFICATIONS

CONTROL CONSOLE

All Sport® 5000
(see [SL-03991](#))

CONTROL OPTIONS

Wireless: 2.4 GHz spread spectrum radio features 64 non-interfering channels and 8 broadcast groups (see [SL-04370](#)). This is a popular upgrade.

Wired: One-pair shielded cable of 22 AWG minimum is required. A cover plate with mounted connector and standard 2" x 4" x 2" (51 mm x 102 mm x 51 mm) outlet box is provided. Connector mates with signal cable from control console.

HORN

A vibrating horn, mounted behind the scoreboard face, sounds automatically when period/timeout clock counts down to zero or manually as controlled by the operator.

SEGMENT TIMER MODE

The segment timer mode is ideal for keeping practices on schedule. The horn at the end of a segment allows coaches and athletes to focus on the practice and to listen for the horn when it is time to change drills (see [SL-04004](#)).

TIME OF DAY MODE

This scoreboard features a Time of Day (TOD) mode that allows it to act as a clock when the control console is unplugged or off. Refer to the scoreboard installation manual for instructions on how to enable the Time of Day mode.

GENERAL INFORMATION

Scoreboard provides scoring capabilities for two teams. 100% solid state electronics are housed in an all aluminum cabinet. Scoreboard arrives at the site fully assembled. Mounting hardware not included. Specifications and pricing are subject to change without notice.

FAN FAVORITE OPTIONS

These are the most commonly requested enhancements:

- Custom vinyl team name caption in place of HOME
- *or* Two Digital Team Name Message Centers (TNMCs) in place of HOME and GUEST captions (see [SL-04342](#))
- 17" tall x 21" wide (432 mm x 533 mm) logo/sponsor panels in upper corners

OTHER ACCESSORIES & UPGRADES

The options below are available for additional customization:

- Advantage time option for wrestling mode – PLYR and FOUL digits reversed (see [SL-03679](#))
- Different sounding 12 VDC horn in place of buzzer
- Protective screen (see [SL-02551](#))
- Suspension installation kit *or* corner mounting kit

COMPLETE YOUR SYSTEM

Contact Daktronics about adding any of this equipment to create a unique scoring and display system:

- Backlit advertising/ID panels (see [SL-03664](#))
- Non-backlit advertising/ID panels (see [SL-03917](#))
- Decorative accents
- Statistic displays, shot clocks, and light strips
- Sportsound® Indoor Audio
- Video displays
- Live web streaming of scores and stats

FOR ADDITIONAL INFORMATION

- Mechanical Specifications: DWG-1140001 (attached)
- Component Locations: DWG-1139971 (attached)
- Architectural Specifications: See [DD2213537](#)
- Installation Manual: See [DD2481645](#)
- Service Manual: See [DD2481648](#)

ALTERNATE SCORING MODES



Volleyball Mode



Basketball Mode with Advantage Time Option
(PLYR/FOUL digits reversed)



Wrestling Mode



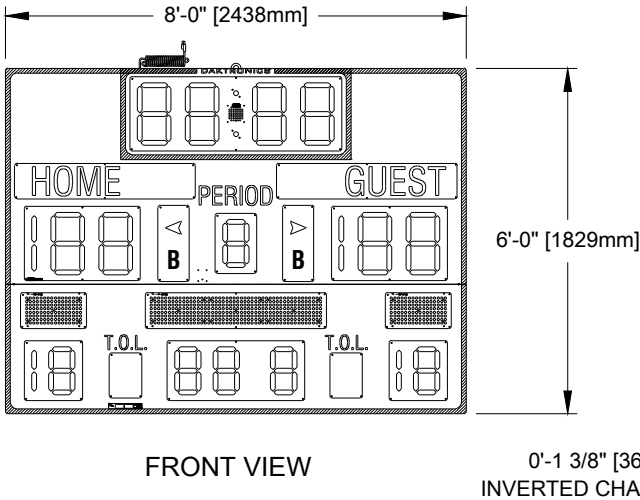
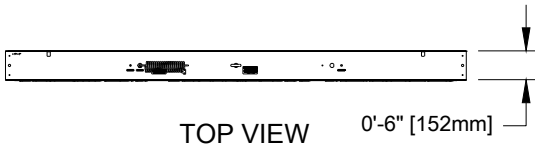
Wrestling Mode with Advantage Time Option

WWW.DAKTRONICS.COM E-MAIL: SALES@DAKTRONICS.COM

All Sport®, PanaView®, Tuff Sport® and UniView® are trademarks of Daktronics, Inc.
Martin Senour® is a registered trademark of its owner.
DD2213495 011725 Page 2 of 4 Copyright © 2013-2025 Daktronics, Inc.

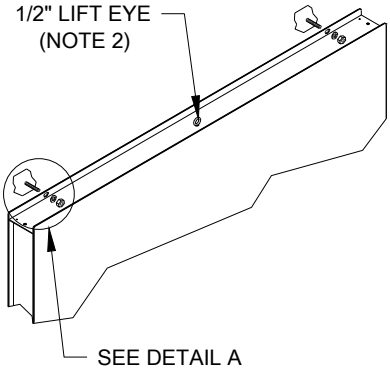


BB-2153

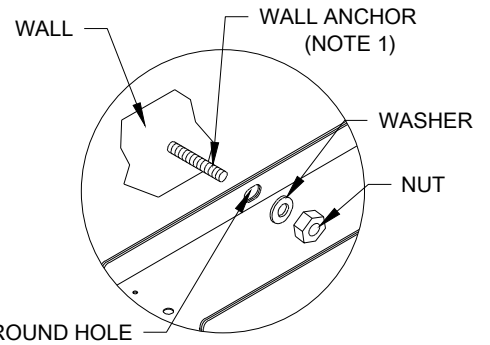
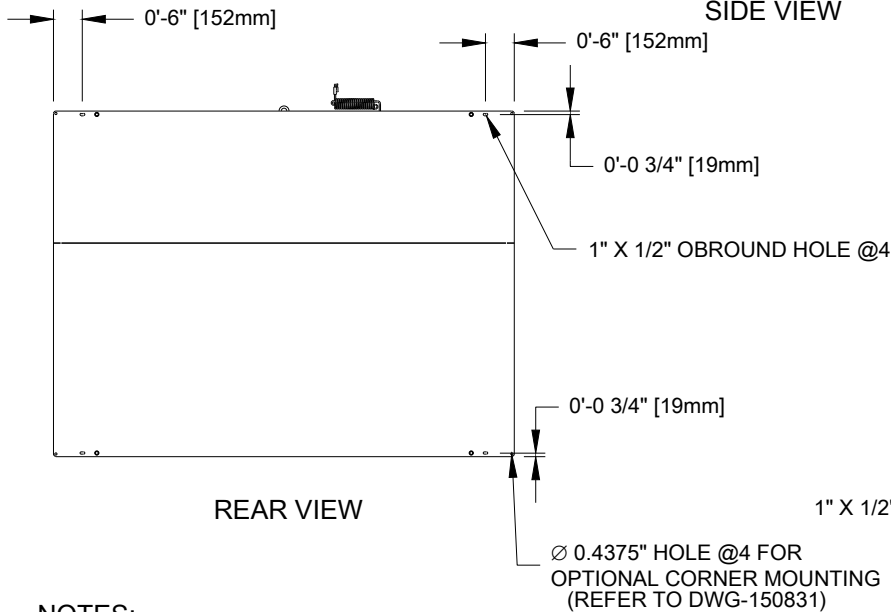


0'-1 3/8" [36mm]
INVERTED CHANNEL DEPTH

SIDE VIEW



WALL MOUNTING DETAIL




DETAIL: A
(SCALE 1=10)

NOTES:

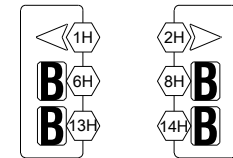
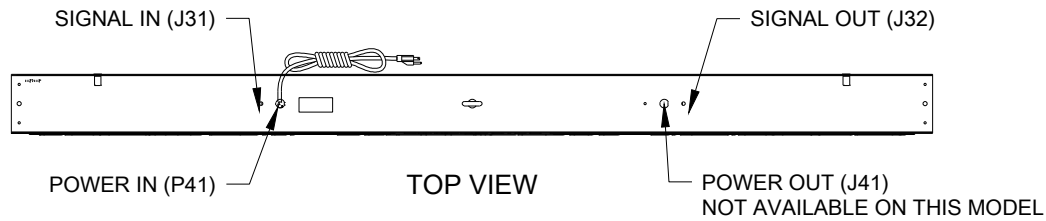
1. USE APPROPRIATE WALL ANCHORS FOR TYPE OF WALL. (NOT PROVIDED BY DAKTRONICS)
2. LIFT EYE IS FOR TEMPORARY USE WHILE LIFTING SCOREBOARD DURING INSTALLATION. DO NOT USE LIFT EYE FOR PERMANENT SUSPENSION. REFER TO DWG-1130959.

WEIGHTS

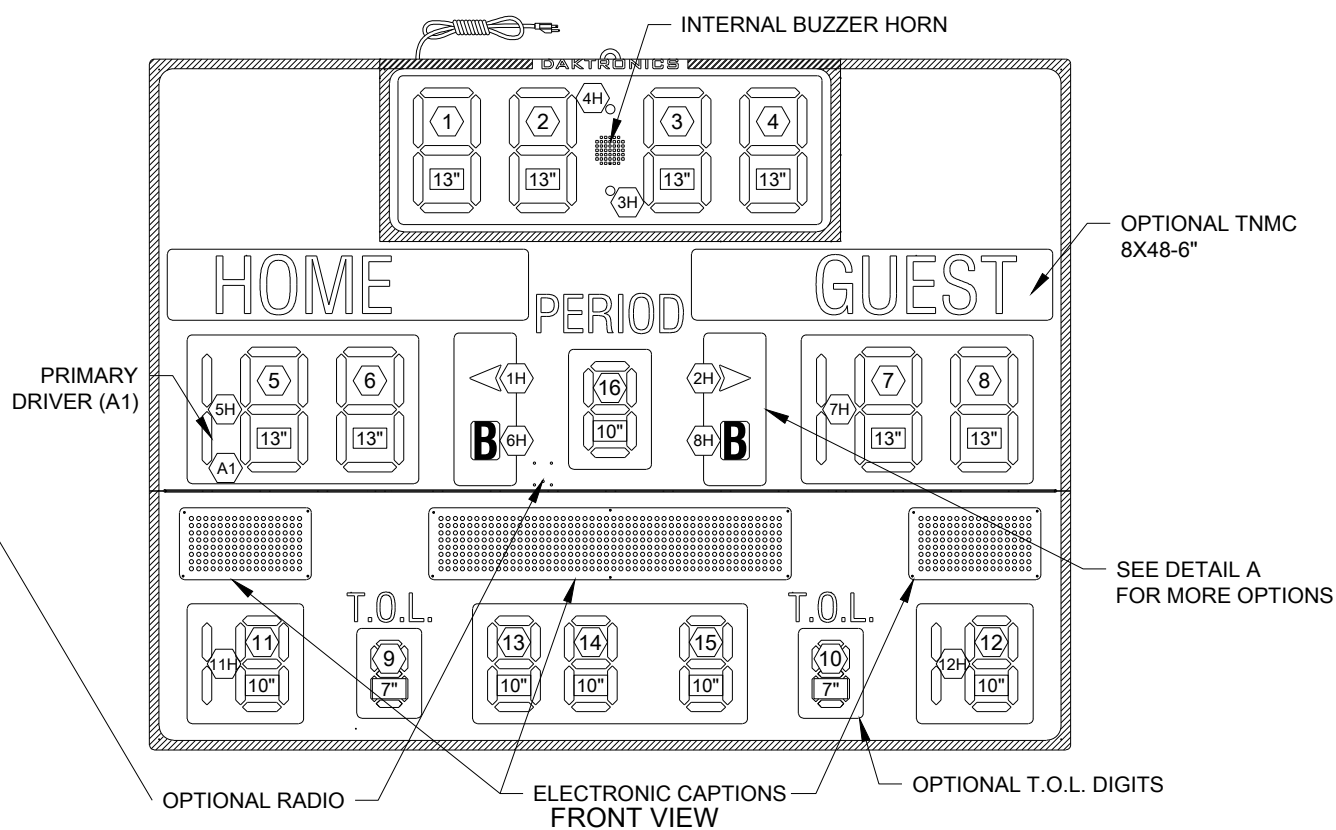
SHIPPING WEIGHT	MOUNTING WEIGHT
305 LBS (139 KG)	195 LBS (89 KG)

 DAKTRONICS, INC. BROOKINGS, SD 57006 DO NOT SCALE DRAWING		THE CONCEPTS EXPRESSED AND DETAILS SHOWN ON THIS DRAWING ARE CONFIDENTIAL AND PROPRIETARY. DO NOT REPRODUCE BY ANY MEANS WITHOUT THE EXPRESSED WRITTEN CONSENT OF DAKTRONICS, INC. COPYRIGHT 2013 DAKTRONICS, INC.	
		PROJ: INDOOR SCOREBOARDS TITLE: MECHANICAL SPEC; BB-2153	
DESIGN: JVANAAR SCALE: 1=40		DRAWN: TFINNES DATE: 12 JUNE 13	
SHEET	REV	JOB NO:	FUNC-TYPE-SIZE
	00	P 1749	E - 10 - A
			1140001

BB-2153/2154 FACE



DETAIL: A
SCALE 1:1
OPTIONAL DOUBLE
BONUS INDICATORS



NOTES:

- 7 = DIGIT DESIGNATION IN RELATION TO DRIVER
- 13" = DIGIT SIZE
- 12H = SEGMENT DESIGNATION
- A1 = DRIVER NUMBER

SIDE VIEW

REV 06	DATE: 18 AUG 20	PER CN-108225 REMOVED LABELS TO MOVE TO NEW STANDARD	BY: TAN
REV 05	DATE: 28 MAY 19	PER CN-80249: REPLACED LL-2525 LABELS WITH LL-4172151 LABELS.	BY: AGM
REV 04	DATE: 21 DEC 17	PER CN-47546, UPDATED LOCATIONS OF HOME/GUEST CAPTIONS	BY: KDD
REV 03	DATE: 7 OCT 16	REMOVED "NOT AVAILABLE ON THIS MODEL" NOTE FROM THE SIGNAL OUT (J32) NOTE	BY: MTR
REV 02	DATE: 25 MAR 16	REMOVED POWER/SIGNAL OUTPUT DATA AS NOT AVAILABLE ON THIS MODEL.	BY: HBB

		THE CONCEPTS EXPRESSED AND DETAILS SHOWN ON THIS DRAWING ARE CONFIDENTIAL AND PROPRIETARY. DO NOT REPRODUCE BY ANY MEANS WITHOUT THE EXPRESS WRITTEN CONSENT OF DAKTRONICS, INC. OR ITS WHOLLY OWNED SUBSIDIARIES. COPYRIGHT 2016 DAKTRONICS, INC. (USA)			
PROJECT: INDOOR SCOREBOARDS					
TITLE: COMPONENT LOCATION; BB-2153					
DATE: 12 JUN 13		DIM UNITS: INCHES [MILLIMETERS]		SHEET	
SCALE: 1=20		DO NOT SCALE DRAWING		REV 06	
DESIGN: JVANAAR		JOB NO. P1749		FUNC - TYPE - SIZE E - 10 - A	
DRAWN: JVANAAR		1139971			