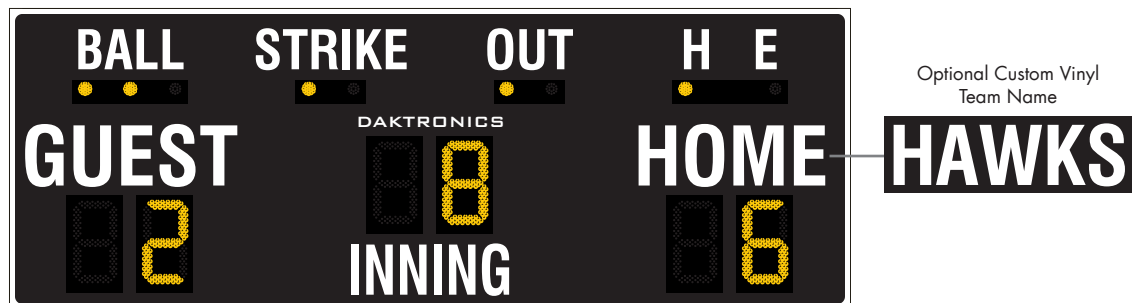


# DAKTRONICS BA-618 PRODUCT SPECIFICATIONS



This outdoor LED baseball/softball scoreboard displays HOME and GUEST scores to 99, INNING to 19 and indicates BALL to three, STRIKE to two, OUT to two and H (hit) or E (error).

DIMENSIONS	UNCRATED WEIGHT	POWER (120 VAC)*	
5'-0" H x 14'-0" W x 8" D (1.52 m x 4.27 m x 203 mm)	200 lb (91 kg)	Red/Amber Digits	80 Watts, 0.7 Amp
		White Digits	170 Watts, 1.5 Amps

\*Scoreboard requires a dedicated circuit. Models with 240 VAC power at half the indicated amperage are also offered (International Use Only).

## DIGITS & INDICATORS

- All digits are 18" (457 mm) high. Indicators are 2" (51 mm) in diameter.
- Select red, amber, or white LED digits and indicators.
- Scoreboard features weather-sealed PanaView® digits (see [DD2495646](#)).
- Digits may be dimmed for night viewing.

## CAPTIONS & STRIPING

- HOME and GUEST captions are 12" (305 mm) high. INNING caption is 10" (254 mm) high. All other captions are 8" (203 mm) high.
- Standard captions are vinyl, applied to the display face.
- Standard captions and border striping are white vinyl. Choose another vinyl color at no additional cost (see [DD2101644](#)).

## DISPLAY COLOR

Choose a color from the Daktronics standard paint book (see [SL-02730](#)).

## CONSTRUCTION

Alcoa aluminum alloy 5052 for excellent corrosion resistance

## PRODUCT SAFETY APPROVAL

ETL-listed to UL 48, tested to CSA standards, and CE-labeled

## OPERATING TEMPERATURES

- Display: -22° to 122° Fahrenheit (-30° to 50° Celsius)
- Console: 32° to 130° Fahrenheit (0° to 54° Celsius)

[WWW.DAKTRONICS.COM](http://WWW.DAKTRONICS.COM) E-MAIL: [SALES@DAKTRONICS.COM](mailto:SALES@DAKTRONICS.COM)

201 Daktronics Drive, PO Box 5128, Brookings, SD 57006  
Phone: 1-800-325-8766 or 605-692-0200 Fax: 605-697-4746  
DD2118104 021125 Page 1 of 7



# DAKTRONICS BA-618 PRODUCT SPECIFICATIONS

CONTROL CONSOLE	CONTROL OPTIONS
<b>All Sport® 1600*</b> (see <a href="#">SL-04352</a> )  <i>*May be upgraded to</i> <b>All Sport 5000</b> (see <a href="#">SL-03991</a> )	<b>Wireless:</b> 2.4 GHz spread spectrum radios feature 64 non-interfering channels and 8 broadcast groups (see <a href="#">SL-04370</a> ). This is a popular upgrade. <hr/> <b>Wired:</b> Two-pair shielded cable of 22 AWG minimum is required. A cover plate with mounted connector and standard 2" x 4" x 2" (51 mm x 102 mm x 51 mm) outlet box is provided. Connector mates with signal cable from control console.
<b>RC-200</b> (see <a href="#">DD3715714</a> )	<b>Wireless</b> handheld controller features 2.4 GHz spread spectrum radio with 64 non-interfering channels and 8-10 hours of operation via internal rechargeable battery.
<b>DAK Score &amp; MX-1</b> (see <a href="#">DD3888368</a> )	CUSTOMER-SUPPLIED mobile device or tablet with DAK Score app installed communicates via <b>Bluetooth®</b> wireless technology to an MX-1 Interface Box that controls the scoreboard through 2.4 GHz radio or wired connection.

## MOUNTING

Scoreboard is typically mounted on two vertical beams or poles. Hardware to mount scoreboard on two beams is included; hardware for more beams is at additional cost. Standard mounting uses I-beam clamps. Optional mounting method using angle brackets is also offered; maximum beam width is 12" (305 mm) and maximum beam depth is 22" (559 mm). Refer to attached drawings for more information on mounting methods.

## SERVICE ACCESS

Digit panels and electronics are serviced from the front of the scoreboard.

## GENERAL INFORMATION

Scoreboard provides scoring capabilities for two teams. 100% solid state electronics are housed in an all aluminum cabinet. Scoreboard is shipped in one section. Scoreboard power is to be provided on a dedicated circuit to prevent loss of game information due to failure of another component on the circuit. Specifications and pricing are subject to change without notice.

## OPTIONS & ACCESSORIES

- Custom vinyl team name caption in place of HOME
- Individual digit protective screens (see [SL-04939](#))
- Protective netting (see [DD2690927](#))
- Angle bracket mounting method

## COMPLETE YOUR SYSTEM

Contact Daktronics about adding any of this equipment to create a unique scoring and display system:

- Advertising/identification panels
- Decorative accents
- Pitch Count, Pitch Speed and Pitch Time displays
- Sportsound® Audio
- Video displays
- Live web streaming of scores and stats

## ADVERTISING/IDENTIFICATION PANELS

### Backlit & Non-Backlit:

- 1'-6" H x 14'-0" W (457 mm x 4.27 m)
- 2'-0" H x 14'-0" W (610 mm x 4.27 m)
- 2'-6" H x 14'-0" W (762 mm x 4.27 m)

For additional non-backlit panel sizes, see [SL-03761](#).

## FOR ADDITIONAL INFORMATION

- Installation Specifications: DWG-1157187 (attached)
- Standard I-beam Mounting: DWG-1052565 (attached)
- LVX I-Beam Mounting: DWG-3918361 (attached)
- Optional Pole Mounting: DWG-1048184 (attached)
- Component Locations: DWG-1066028 (attached)
- Architectural Specifications: See [SL-05255](#)

The Bluetooth® word mark and logos are registered trademarks owned by the Bluetooth SIG, Inc. and any use of such marks by Daktronics, Inc. is under license.

WWW.DAKTRONICS.COM E-MAIL: SALES@DAKTRONICS.COM

All Sport®, PanaView® and Sportsound® are trademarks of Daktronics, Inc.  
DD2118104 021125 Page 2 of 7 Copyright © 2011-2025 Daktronics, Inc.



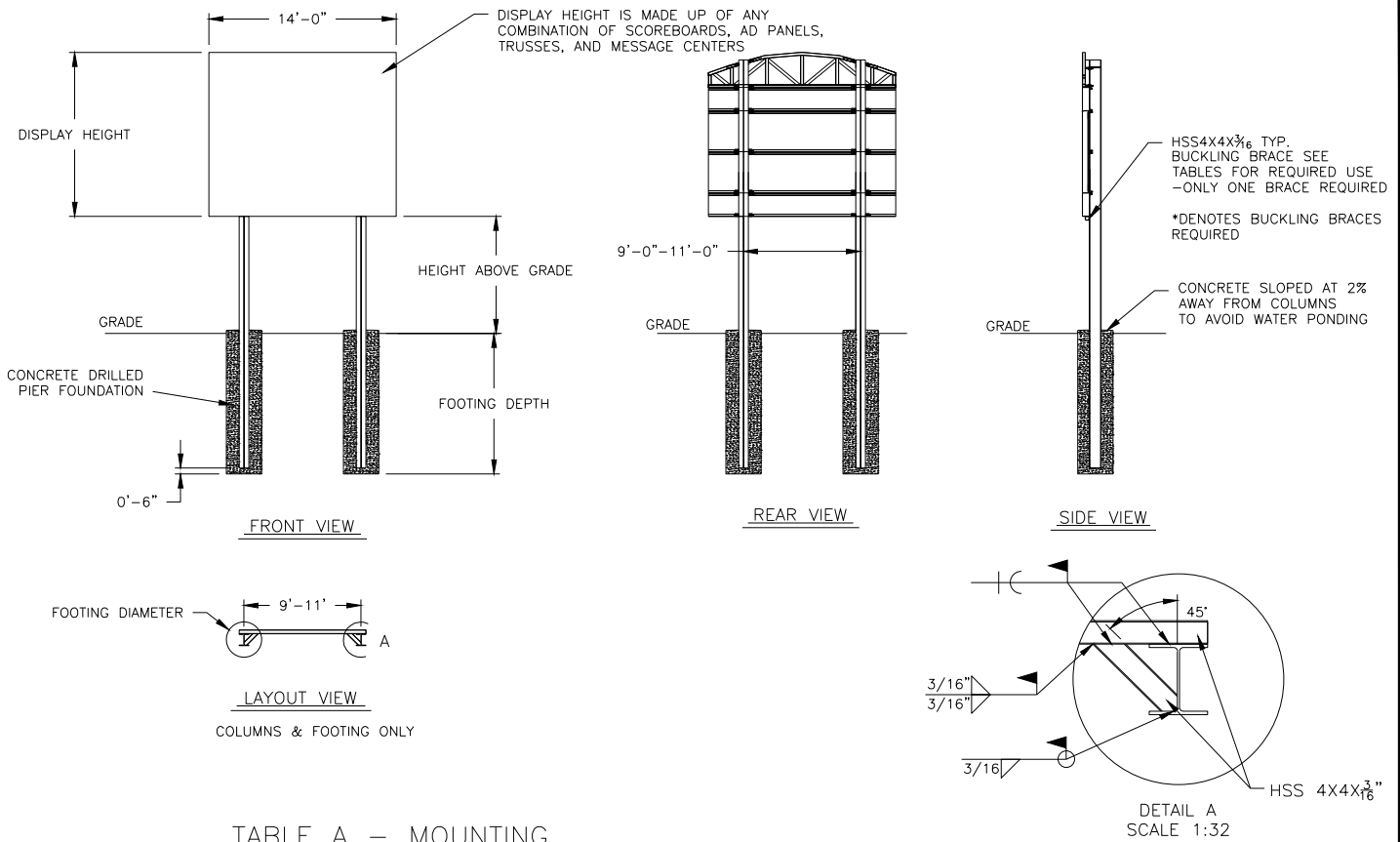


TABLE A - MOUNTING

EXPOSURE B

HEIGHT ABOVE GRADE = 10'						HEIGHT ABOVE GRADE = 15'					
DISPLAY HEIGHT (FT)		DESIGN WIND VELOCITY				DISPLAY HEIGHT (FT)		DESIGN WIND VELOCITY			
		115 MPH	130 MPH	150 MPH	170 MPH			115 MPH	130 MPH	150 MPH	170 MPH
6	COLUMN FOOTING	W6X15 2.0'x6.5'	W8X21 2.0'x7.0'	W8X21 2.0'x8.0'	W10X22 2.0'x8.5'	6	COLUMN FOOTING	W8X24 2.0'x7.5'	W8X24 2.0'x8.0'	W8X28 2.0'x9.0'	W8X31 2.0'x9.5'
8	COLUMN FOOTING	W10X22 2.0'x7.5'	W8X24 2.0'x8.0'	W8X24 2.0'x9.0'	W8X28 2.0'x10.0'	8	COLUMN FOOTING	W8X31 2.0'x8.5'	W8X31 2.0'x9.0'	W10X33 3.0'x8.5'	W10X39 3.0'x9.5'
10	COLUMN FOOTING	W8X24 2.0'x8.5'	W8X28 2.0'x9.0'	W8X31 2.0'x10.0'	W10X33 3.0'x9.5'	10	COLUMN FOOTING	W8X24* 2.0'x9.0'	W12X26* 2.0'x10.0'	W10X33* 3.0'x9.5'	W16X36* 3.0'x11.0'
12	COLUMN FOOTING	W8X28 2.0'x9.0'	W8X31 2.0'x10.0'	W10X39 3.0'x9.5'	W12X40 3.0'x11.0'	12	COLUMN FOOTING	W12X26* 2.0'x10.0'	W14X30* 3.0'x9.5'	W16X36* 3.0'x11.0'	W14X43* 3.0'x12.0'
14	COLUMN FOOTING	W10X26* 2.0'x10.0'	W10X26* 3.0'x9.0'	W12X30* 3.0'x10.0'	W14X34* 3.0'x11.0'	14	COLUMN FOOTING	W10X30* 3.0'x9.5'	W10X49* 3.0'x10.0'	W16X40* 3.0'x11.0'	W14X48* 3.0'x13.0'

FOOTING DIMENSIONS = DIAMETER X DEPTH  
\* DENOTES BUCKLING BRACE REQUIRED

EXPOSURE C

HEIGHT ABOVE GRADE = 10'				HEIGHT ABOVE GRADE = 15'			
DISPLAY HEIGHT (FT)		DESIGN WIND VELOCITY		DISPLAY HEIGHT (FT)		DESIGN WIND VELOCITY	
		115 MPH	140 MPH			115 MPH	140 MPH
6	COLUMN FOOTING	W8X21 2.0'X7.5'	W8X24 2.0'X8.5'	6	COLUMN FOOTING	W12X26 2.0'X8.5'	W8X31 2.0'X9.5'
8	COLUMN FOOTING	W8X24 2.0'X8.5'	W8X28 2.0'X10.0'	8	COLUMN FOOTING	W8X31 2.0'X9.5'	W10X39 3.0'X9.5'
10	COLUMN FOOTING	W8X31 2.0'X9.5'	W10X33 3.0'X9.5'	10	COLUMN FOOTING	W12X30* 3.0'X9.0'	W16X36* 3.0'X11.0'
12	COLUMN FOOTING	W10X33 3.0'X9.0'	W12X40 3.0'X10.5'	12	COLUMN FOOTING	W14X34* 3.0'X9.5'	W16X40* 3.0'X11.0'
14	COLUMN FOOTING	W12X26* 3.0'X9.5'	W14X34* 3.0'X11.0'	14	COLUMN FOOTING	W14X38* 3.0'X11.0'	W14X48* 3.0'X13.0'

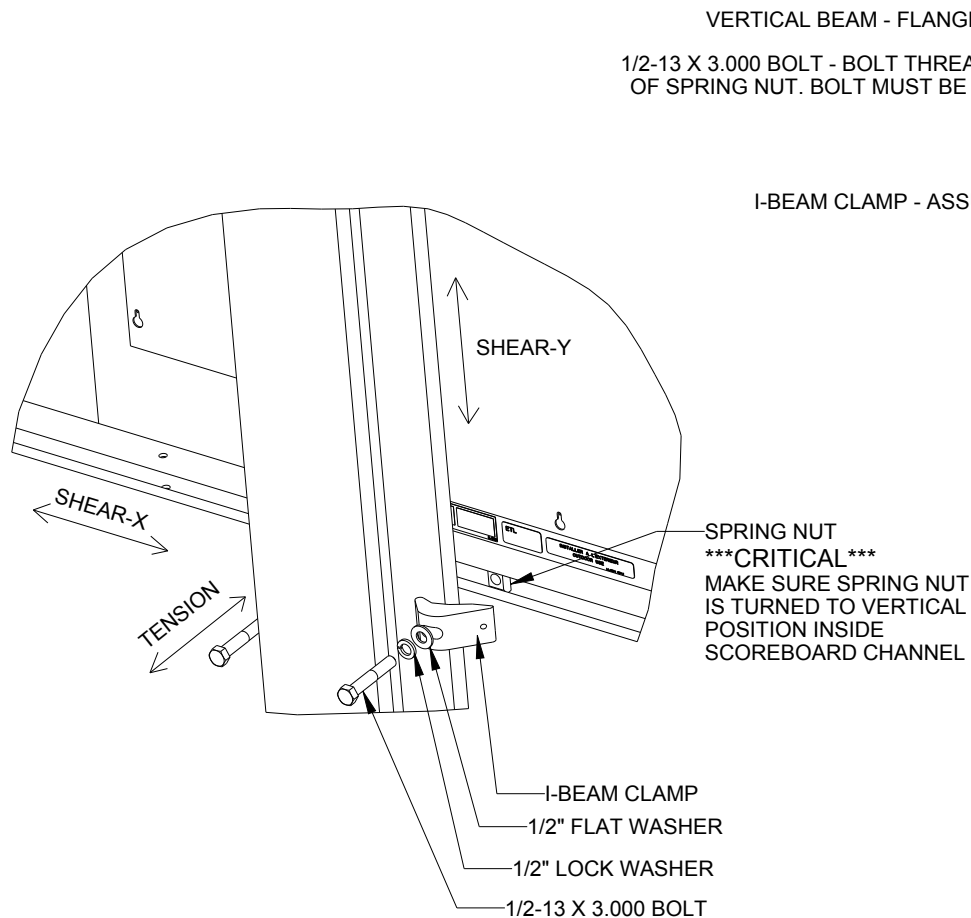
FOOTING DIMENSIONS = DIAMETER X DEPTH  
\* DENOTES BUCKLING BRACE REQUIRED

NOTE:  
-REFER TO NOTE 7 FOR EXPOSURE CATEGORY DEFINITIONS.


NOTES:

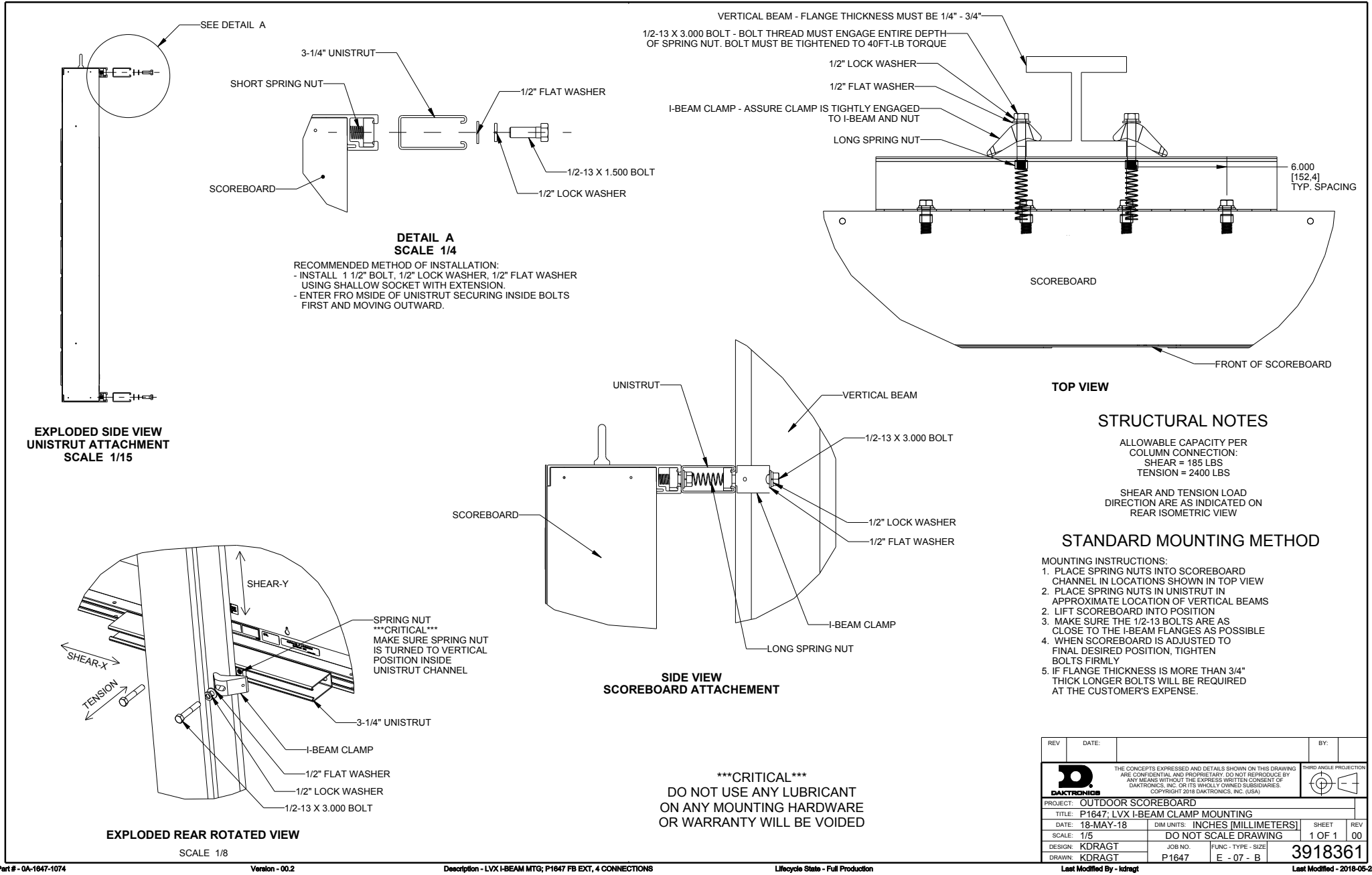
- FOOTING AND COLUMN SIZES ARE SUGGESTIONS ONLY, PROVIDED TO ASSIST WITH ESTIMATING INSTALLATION COSTS AND ARE NOT INTENDED FOR CONSTRUCTION PURPOSES. THE DESIGN MUST BE CERTIFIED BY A PROFESSIONAL ENGINEER LICENSED IN THE STATE OF THE INSTALLATION BEFORE THEY CAN BE USED FOR FABRICATION OR ERECTION.
- INTERNATIONAL BUILDING CODE 2012 USED IN DESIGN OF COLUMNS AND FOOTINGS WITH IMPORTANCE FACTOR=1, Kzt=1.0, Kd=0.85, G=0.85. SEISMIC DESIGN WAS NOT CONSIDERED.
- FOOTING DIMENSIONS ARE BASED ON ASSUMED SOIL CLASS 4 (ALLOWABLE LATERAL BEARING PRESSURE OF 150 psf).
- STRUCTURAL STEEL IS GRADE A992 (50 ksi) STEEL. CONCRETE SHALL HAVE A MINIMUM 28 DAY COMPRESSIVE STRENGTH OF 2500 psi.
- THE AVERAGE DISPLAY WEIGHT FOR A LAYOUT CAN NOT EXCEED 8 PSF.
- DAKTRONICS INC. IS NOT RESPONSIBLE FOR STRUCTURES DESIGNED AND INSTALLED BY OTHERS.
- LOCAL BUILDING OFFICIALS SHOULD BE CONTACTED TO DETERMINE THE WIND SPEED AND EXPOSURE CATEGORY FOR THE PROPOSED SIGN LOCATION. THE EXPOSURE CATEGORY C IS DEFINED AS:  
  
EXPOSURE B - URBAN AND SUBURBAN AREAS, OR OTHER TERRAIN WITH NUMEROUS SPACED OBSTRUCTIONS HAVING THE SIZE OF SINGLE-FAMILY DWELLINGS OR LARGER. THESE CONDITIONS MUST PREVAIL FOR A DISTANCE FROM THE SIGN OF AT LEAST 2,600 ft OR 20 TIMES THE SIGN HEIGHT, WHICHEVER IS GREATER  
  
EXPOSURE C - OPEN TERRAIN WITH SCATTERED OBSTRUCTIONS HAVING HEIGHTS GENERALLY LESS THAN 30 FT. THIS CATEGORY INCLUDES FLAT OPEN COUNTRY, GRASSLANDS, AND ALL WATER SURFACES IN HURRICANE PRONE REGIONS.
- FOR SPECIFIC PRODUCT DETAILS ON WEIGHT, MOUNTING, ETC. REFER TO THE INDIVIDUAL PRODUCT SPECIFICATION SHEETS.

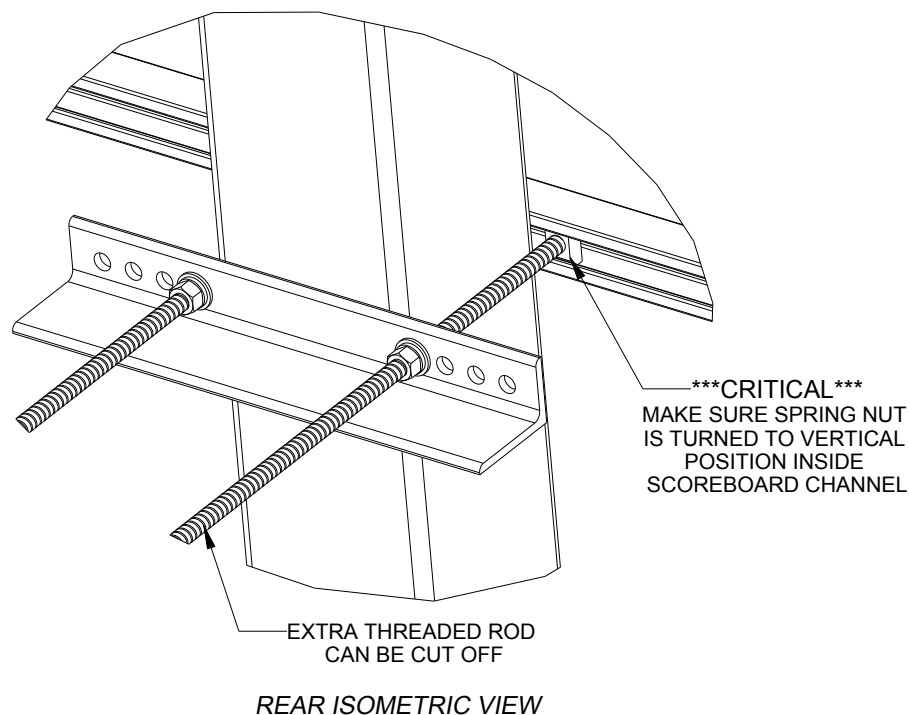
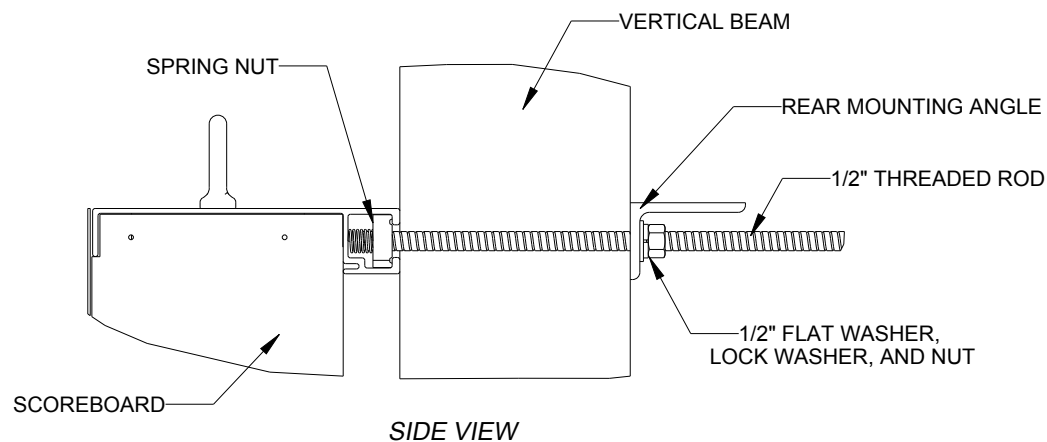
<b>DAKTRONICS, INC.</b> BROOKINGS, SD 57006 DO NOT SCALE DRAWING		THE CONCEPTS EXPRESSED AND DETAILS SHOWN ON THIS DRAWING ARE CONFIDENTIAL AND PROPRIETARY. DO NOT REPRODUCE BY ANY MEANS WITHOUT THE EXPRESSED WRITTEN CONSENT OF DAKTRONICS, INC. COPYRIGHT 2013 DAKTRONICS, INC.	
		PROJ: <b>OUTDOOR SCOREBOARD INSTALLATION</b> TITLE: <b>14' WIDTH SCOREBOARD INSTALLATION SPECS</b>	
REV 02 DATE: 27 OCT 15 UPDATED WIDE FLANGE AND FOUNDATION VALUES	BY: AMP	DESIGN: <b>RSCHWAR</b> SCALE: <b>1/16"=1'</b>	DRAWN: <b>RSCHWAR</b> DATE: 27 NOV 13
REV 01 DATE: 23 JUL 14 UPDATED CLAMPS IN REAR AND SIDE VIEW AND ADDED 170 MPH WIND SPEC COLUMN	BY: TJT	SHEET 02 P1647	JOB NO: E - 10 - A 1157187



05	22 DEC 15	PER EC-22871; ADDED LUBRICANT NOTE	PJS 18704	
04	06 JAN 14	ADDED ALLOWABLE TENSION AND SHEAR CAPACITY DETAILS	JAVA	
03	23 OCT 13	PER EC-12382; CHANGED BOLT TORQUE FROM 30 FT-LB TO 40 FT-LB	NJM	
02	07 MAR 12	ADDED STANDARD MOUNTING METHODS NOTES	KDD	
01	21 FEB 12	CHANGED ROCKER TO I-BEAM	KDD	
REV	DATE:		BY:	

 <b>DAKTRONICS</b>		THE CONCEPTS EXPRESSED AND DETAILS SHOWN ON THIS DRAWING ARE CONFIDENTIAL AND PROPRIETARY. DO NOT REPRODUCE BY ANY MEANS WITHOUT THE EXPRESS WRITTEN CONSENT OF DAKTRONICS, INC. OR ITS WHOLLY OWNED SUBSIDIARIES. COPYRIGHT 2016 DAKTRONICS, INC. (USA)			
PROJECT: <b>OUTDOOR SCOREBOARD</b>					
TITLE: <b>P1647; I-BEAM CLAMP MOUNTING</b>					
DATE: <b>22-DEC-15</b>		DIM UNITS: <b>INCHES [MILLIMETERS]</b>		SHEET	REV
SCALE: <b>1/8</b>		DO NOT SCALE DRAWING		<b>1 OF 1</b>	<b>05</b>
DESIGN: <b>MCARSRU</b>		JOB NO.	FUNC - TYPE - SIZE	<b>1052565</b>	
DRAWN: <b>MCARSRU</b>		<b>P1647</b>	<b>E - 07 - A</b>		

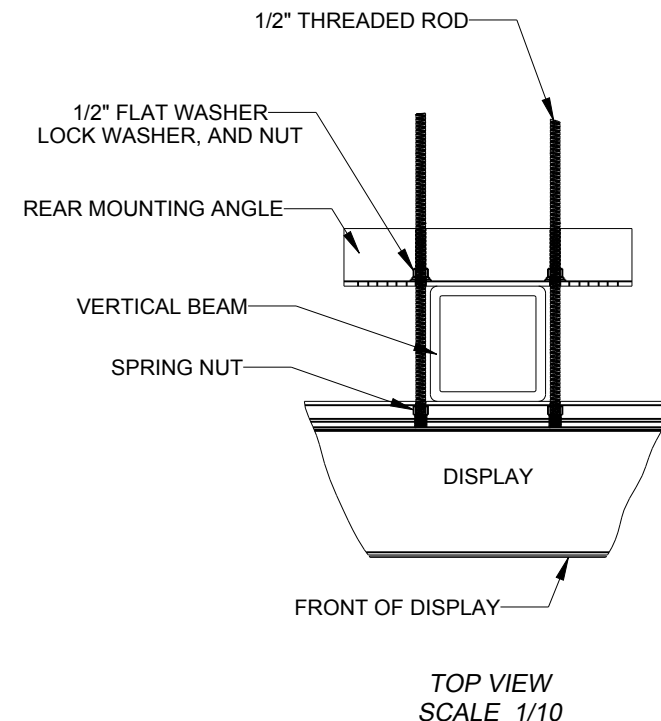




**STRUCTURAL NOTES:**  
- BOLT TORQUE: 30 FT-LB

**NOTES:**

- THREADED RODS RUN ALONG BOTH SIDES OF BEAM
- RODS DO NOT PASS THROUGH THE FLANGES OF THE BEAM
- NO DRILLING NECESSARY
- MAKE SURE SPRING NUT IS PERPENDICULAR TO CHANNEL OPENING ON SCOREBOARD

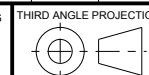


**\*\*\*CRITICAL\*\*\***  
**DO NOT USE ANY LUBRICANT**  
**ON ANY MOUNTING HARDWARE**  
**OR WARRANTY WILL BE VOIDED**

04	22 DEC 15	PER EC-22871; ADDED LUBRICANT WARNING	PJS 18704	
03	03 JULY 13	ADDED STRUCTURAL NOTE	TTF	
02	20 SEP 12	PER EC-7114; REMOVED CHAMFER FROM 0M-133259	LMG	
01	06 OCT 11	REPLACED VERTICAL I-BEAM WITH 6" X 6" SQUARE TUBE	JAVA	
REV	DATE:		BY:	

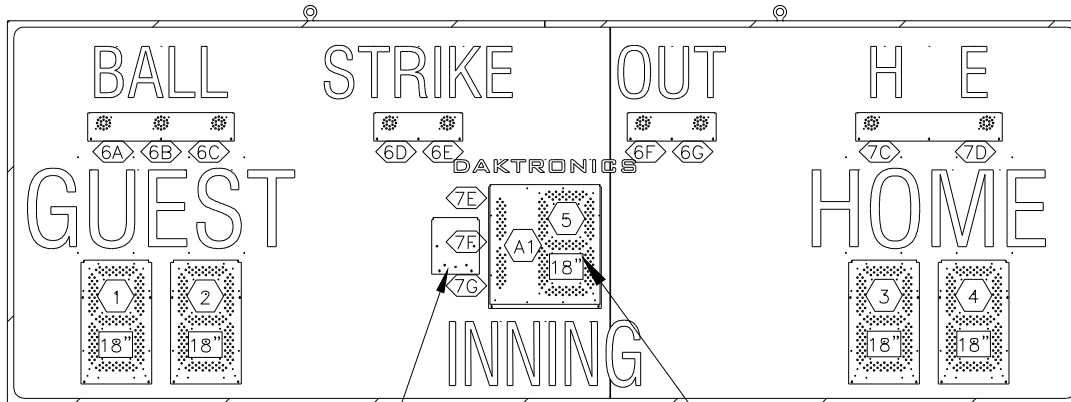


THE CONCEPTS EXPRESSED AND DETAILS SHOWN ON THIS DRAWING ARE CONFIDENTIAL AND PROPRIETARY. DO NOT REPRODUCE BY ANY MEANS WITHOUT THE EXPRESS WRITTEN CONSENT OF DAKTRONICS, INC. OR ITS WHOLLY OWNED SUBSIDIARIES. COPYRIGHT 2016 DAKTRONICS, INC. (USA)



PROJECT: OUTDOOR SCOREBOARDS				
TITLE: P1647; POLE MOUNTING OPTIONS				
DATE: 22-DEC-15	DIM UNITS: INCHES [MILLIMETERS]		SHEET	REV
SCALE: 1/5	DO NOT SCALE DRAWING		1 OF 1	04
DESIGN: DOPPELT	JOB NO.	FUNC - TYPE - SIZE	1048184	
DRAWN: DOPPELT	P1647	E - 10 - A		

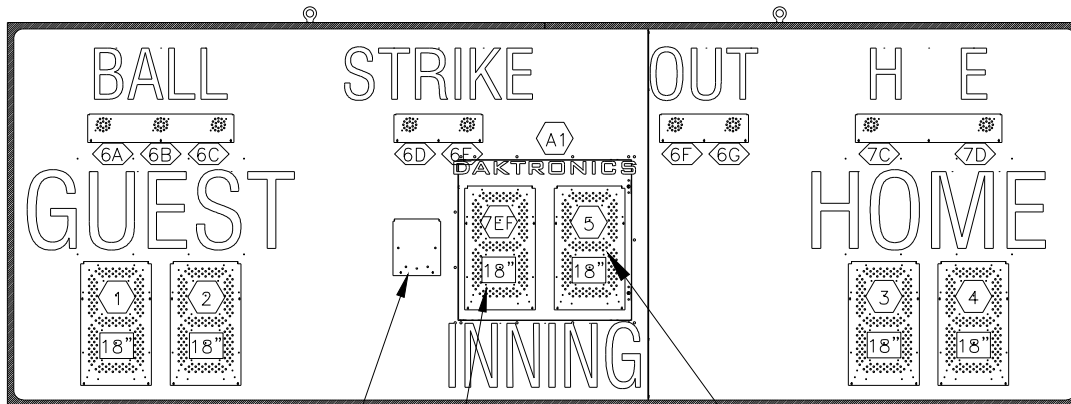
BA-618-R/-A/-W



OPTIONAL RADIO

FRONT VIEW  
BEFORE JANUARY 2013

PRIMARY DRIVER (A1)  
KNOCKOUTS FOR 1/2" CONDUIT  
SIGNAL OPTION ON THIS DRIVER  
(WIRE, FIBER, OR RADIO)



OPTIONAL RADIO


\*NOT A FULL DIGIT\*  
WILL ONLY LIGHT UP 2 SEGMENTS  
TO DENOTE A "1"  
THE MAXIMUM INNING COUNT WILL BE 19

FRONT VIEW  
AFTER JANUARY 2013

PRIMARY DRIVER (A1)  
KNOCKOUTS FOR 1/2" CONDUIT  
SIGNAL OPTION ON THIS DRIVER  
(WIRE, FIBER, OR RADIO)

NOTES:

- (A1) = DRIVER NUMBER
- (12) = DRIVER CONNECTOR  
WIRED TO THAT DIGIT.
- (6A) = DRIVER CONNECTOR  
AND SEGMENT (PIN) NO.  
WIRED TO THAT INDICATOR
- (18") = DIGIT SIZE

 <b>DAKTRONICS, INC.</b> BROOKINGS, SD 57006 DO NOT SCALE DRAWING		THE CONCEPTS EXPRESSED AND DETAILS SHOWN ON THIS DRAWING ARE CONFIDENTIAL AND PROPRIETARY. DO NOT REPRODUCE BY ANY MEANS WITHOUT THE EXPRESSED WRITTEN CONSENT OF DAKTRONICS, INC. COPYRIGHT 2011 DAKTRONICS, INC.				
PROJ:OUTDOOR LED SCOREBOARDS						
TITLE:COMPONENT LOCATION; BA-618-201X-R/A/W						
DESIGN:KDRAGT		DRAWN:MJOHNSO		DATE: 17 AUG 11		
SCALE: 1=30						
SHEET		REV	JOB NO:	FUNC-TYPE-SIZE		1066028
		03	P1647	R-08-A		

REV 03	DATE: 04 AUG 20	PER CN-107571 REMOVED LABELS TO MOVE TO NEW STANDARD	BY: TAN
REV 02	DATE: 27 FEB 15	PER EC-17119, REMOVED DETAIL A ADDED SIGNAL OPTION NOTE CHANGED SLAVE AND MASTER DRIVER NAMES	BY: KDB
REV 01	DATE: 19 DEC 12	UPDATED DRAWING PER EC-8626	BY: MBJ