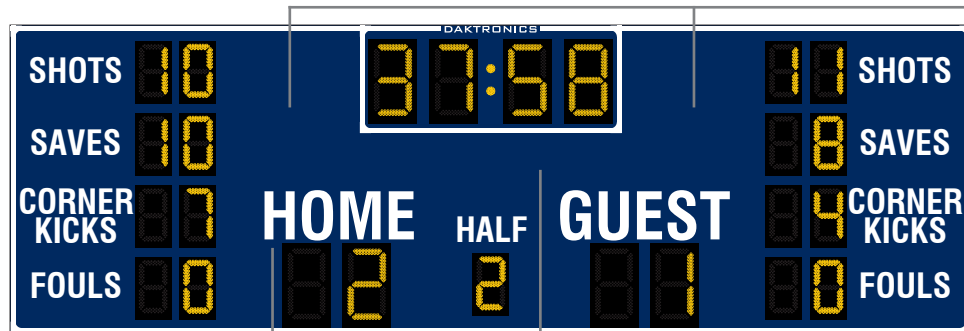


# DAKTRONICS SO-2043 PRODUCT SPECIFICATIONS



Optional Logo/  
Sponsor Panel(s)  
(on One or Both  
Sides of Clock)



Optional Custom Vinyl  
Team Name  
Or  
Optional 8x48 Team Name  
Message Centers (TNMCs)  
Or  
Optional Backlit Team  
Name Captions

**HAWKS**

**HAWKS**

**HOME**

**SIMPSON FIELD**

Optional Logo/  
Sponsor Panel  
(Beneath Clock)

This outdoor LED soccer scoreboard displays period time to 99:59, HOME and GUEST scores to 99, HALF to nine and SHOTS, SAVES, CORNER KICKS and FOULS to 99 for both teams. When period time is less than one minute, the scoreboard displays time to 1/10 of a second.

DIMENSIONS	# OF SECTIONS
<b>8'-0" H x 25'-0" W x 8" D</b> <b>(2.44 m x 7.62 m x 203 mm)</b>	<b>Two Total</b>
4'-0" H x 25'-0" W x 8" D (1.22 m x 7.62 m x 203 mm)	One Top & One Bottom

		VINYL CAPTIONS (STANDARD)	TNMCs & VINYL CAPTIONS	BACKLIT TEAM NAMES & VINYL CAPTIONS
<b>POWER (120 VAC)*</b>	Red/Amber Digits	350 Watts, 3.0 Amps	450 Watts, 3.8 Amps	420 Watts, 3.5 Amps
	White Digits	770 Watts, 6.5 Amps	1000 Watts, 8.4 Amps	840 Watts, 7.0 Amps
<b>UNCRATED WEIGHT</b>	Top Section	500 lb (227 kg)	500 lb (227 kg)	500 lb (227 kg)
	Bottom Section	500 lb (227 kg)	620 lb (281 kg)	564 lb (256 kg)
	<b>Total</b>	<b>1000 lb (454 kg)</b>	<b>1120 lb (508 kg)</b>	<b>1064 lb (483 kg)</b>

\*Scoreboard requires a dedicated circuit. Models with 240 VAC power at half the indicated amperage are also offered (International Use Only).

## DIGITS & INDICATORS

- Clock and score digits are 24" (610 mm) high. All other digits are 18" (457 mm) high. Colons are 2" (51 mm) in diameter.
- Select red, amber, or white LED digits and indicators.
- Scoreboard features weather-sealed PanaView® digits (see [DD2495646](#)).
- Digits may be dimmed for night viewing.

## DISPLAY COLOR

Choose a color from the Daktronics standard paint book (see [SL-02730](#)).

## CONSTRUCTION

Alcoa aluminum alloy 5052 for excellent corrosion resistance

## PRODUCT SAFETY APPROVAL

ETL-listed to UL 48, tested to CSA standards, and CE-labeled

## CAPTIONS & STRIPING

- HOME and GUEST captions are 15" (381 mm) high. All other captions are 8" (203 mm) high.
- Standard captions are vinyl, applied to the display face.
- Optional backlit team name captions are 14" (356 mm) high and consist of white letters on a black background.
- Optional TNMCs are 10.6" (269 mm) high.
- Standard captions and border striping are white vinyl. Choose another vinyl color at no additional cost (see [DD2101644](#)).

## OPERATING TEMPERATURES

- Display: -22° to 122° Fahrenheit (-30° to 50° Celsius)
- Console: 32° to 130° Fahrenheit (0° to 54° Celsius)

[WWW.DAKTRONICS.COM](http://WWW.DAKTRONICS.COM) E-MAIL: [SALES@DAKTRONICS.COM](mailto:SALES@DAKTRONICS.COM)

201 Daktronics Drive, PO Box 5128, Brookings, SD 57006  
Phone: 1-800-325-8766 or 605-692-0200 Fax: 605-697-4746  
DD1956444 012725 Page 1 of 8



# DAKTRONICS SO-2043 PRODUCT SPECIFICATIONS

## CONTROL CONSOLE

**All Sport® 5000**  
(see [SL-03991](#))

## CONTROL OPTIONS

**Wireless:** 2.4 GHz spread spectrum radios feature 64 non-interfering channels and 8 broadcast groups (see [SL-04370](#)). This is a popular upgrade.

**Wired:** Two-pair shielded cable of 22 AWG minimum is required. A cover plate with mounted connector and standard 2" x 4" x 2" (51 mm x 102 mm x 51 mm) outlet box is provided. Connector mates with signal cable from control console.

## SEGMENT TIMER MODE

The segment timer mode is ideal for keeping practices on schedule. The horn at the end of a segment allows coaches and athletes to focus on the practice and to listen for the horn when it is time to change drills (see [SL-04004](#)).

## TIME OF DAY MODE

This scoreboard features a Time of Day (TOD) mode that allows it to act as a clock when the control console is unplugged or off. Refer to the scoreboard installation manual for instructions on how to enable the Time of Day mode.

## MOUNTING

Scoreboard is typically mounted on two vertical beams or poles. Hardware to mount scoreboard on two beams is included; hardware for more beams is at additional cost. Standard mounting uses I-beam clamps. Optional mounting method using angle brackets is also offered; maximum beam width is 12" (305 mm) and maximum beam depth is 22" (559 mm). Refer to attached drawings for more information on mounting methods.

## SERVICE ACCESS

Digit panels and electronics are serviced from either the front or rear of the scoreboard.

## ADVERTISING/IDENTIFICATION PANELS

### Backlit & Non-Backlit:

1'-6" H x 25'-0" W (457 mm x 7.62 m)  
2'-0" H x 25'-0" W (610 mm x 7.62 m)  
2'-6" H x 25'-0" W (762 mm x 7.62 m)  
3'-0" H x 25'-0" W (914 mm x 7.62 m)  
4'-0" H x 25'-0" W (1.22 m x 7.62 m)

For additional non-backlit panel sizes, see [SL-03761](#).

## GENERAL INFORMATION

Scoreboard provides scoring capabilities for two teams. 100% solid state electronics are housed in an all aluminum cabinet. Scoreboard is shipped in two sections. Scoreboard power is to be provided on a dedicated circuit to prevent loss of game information due to failure of another component on the circuit. Specifications and pricing are subject to change without notice.

## FAN FAVORITE OPTIONS

These are the most commonly requested enhancements:

- Custom vinyl team name caption in place of HOME \*or\* Two Digital Team Name Message Centers (TNMCs) in place of HOME and GUEST captions (see [DD1696958](#)) \*or\* Backlit team name captions
- Two 3'-8.5" tall x 3'-5" wide (1.13 m x 1.04 m) logo/sponsor panels. Copy is applied to display face.
- One 1'-0" tall x 7'-2" wide (305 mm x 2.18 m) logo/sponsor panel. Copy is applied to display face.
- Horn

## OTHER ACCESSORIES & UPGRADES

The options below are available for additional customization:

- Rugby captions on changeable panels
- Individual digit protective screens (see [SL-04939](#))
- Protective netting (see [DD2690927](#))
- Angle bracket mounting method

## COMPLETE YOUR SYSTEM

Contact Daktronics about adding any of this equipment to create a unique scoring and display system:

- Advertising/identification panels
- Decorative accents
- Sportsound® Audio
- Video displays
- Live web streaming of scores and stats

## FOR ADDITIONAL INFORMATION

- Installation Specifications: DWG-1183308 (attached)
- Standard I-beam Mounting: DWG-1052565 (attached)
- LVX I-Beam Mounting: DWG-3918361 (attached)
- Optional Pole Mounting: DWG-1048184 (attached)
- Component Locations (Red/Amber Digits): DWG-1061235 (attached)
- Component Locations (White Digits): DWG-3025539 (attached)
- Architectural Specifications: See [DD1956441](#)

## ALTERNATE CAPTIONS & SCORING MODES



Rugby Mode – Optional vinyl captions shown

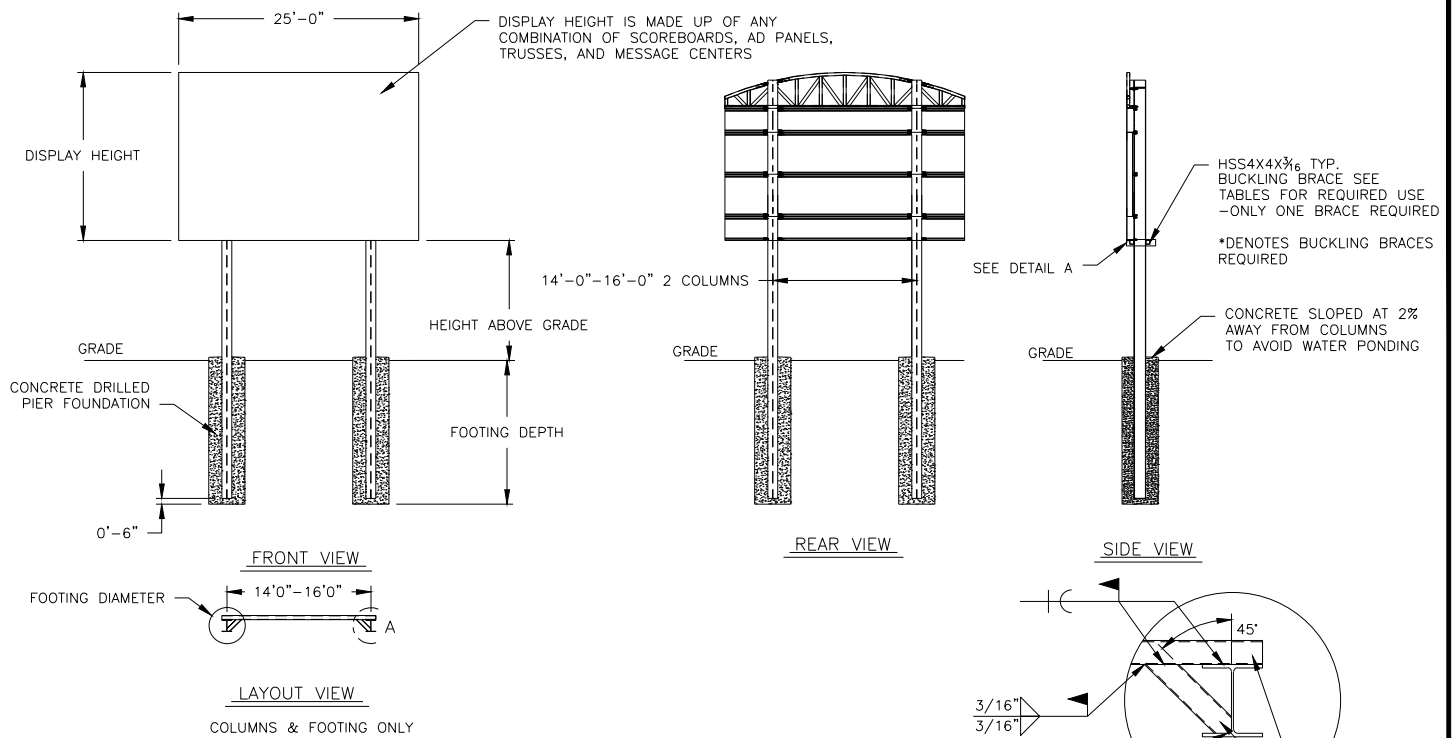


TABLE A - MOUNTING

EXPOSURE B

HEIGHT ABOVE GRADE = 10'						HEIGHT ABOVE GRADE = 15'					
DISPLAY HEIGHT (FT)		DESIGN WIND VELOCITY				DISPLAY HEIGHT (FT)		DESIGN WIND VELOCITY			
		115 MPH	130 MPH	150 MPH	170 MPH			115 MPH	130 MPH	150 MPH	170 MPH
8	COLUMN FOOTING	W8X28 3.0'X8.0'	W8X31 3.0'X9.0'	W14X38 3.0'X10.0'	W12X40 3.0'X11.0'	8	COLUMN FOOTING	W10X39 3.0'X9.0'	W14X43 3.0'X10.0'	W10X49 3.0'X11.0'	W12X58 3.0'X12.0'
10	COLUMN FOOTING	W10X33 3.0'X9.0'	W10X39 3.0'X10.0'	W14X43 3.0'X11.0'	W12X53 3.0'X12.0'	10	COLUMN FOOTING	W10X45 3.0'X10.0'	W12X53 3.0'X11.0'	W12X58 4.0'X11.0'	W16X67 4.0'X13.5'
12	COLUMN FOOTING	W10X39 3.0'X10.0'	W14X43 3.0'X10.5'	W12X53 3.0'X12.0'	W14X61 3.0'X12.0'	12	COLUMN FOOTING	W12X53 3.0'X11.0'	W12X58 3.0'X12.0'	W12X72 3.0'X13.5'	W18X76 3.0'X13.5'
14	COLUMN FOOTING	W14X43 3.0'X10.5'	W12X53 3.0'X11.5'	W12X58 4.0'X11.5'	W16X67 4.0'X13.0'	14*	COLUMN FOOTING	W14X48 3.0'X11.5'	W18X55 3.0'X13.0'	W21X62 4.0'X13.0'	W24X68 4.0'X15.0'
16	COLUMN FOOTING	W12X53 3.0'X11.5'	W14X61 4.0'X11.0'	W12X72 4.0'X12.5'	W18X86 4.0'X14.5'	16*	COLUMN FOOTING	W21X48 4.0'X11.0'	W21X62 4.0'X12.0'	W21X68 4.0'X14.5'	W24X76 4.0'X17.0'
18*	COLUMN FOOTING	W16X40 3.0'X12.0'	W21X48 4.0'X12.0'	W21X55 4.0'X14.0'	W21X68 4.0'X16.0'	18*	COLUMN FOOTING	W21X55 4.0'X12.0'	W16X67 3.0'X16.0'	W18X76 4.0'X16.0'	W27X84 4.0'X18.5'
20*	COLUMN FOOTING	W14X48 3.0'X13.0'	W18X55 3.0'X15.0'	W21X62 4.0'X15.0'	W24X68 4.0'X18.0'	20*	COLUMN FOOTING	W21X62 4.0'X12.5'	W24X68 4.0'X14.5'	W24X84 4.0'X17.5'	W30X90 5.0'X17.5'

FOOTING DIMENSIONS = DIAMETER X DEPTH

\* DENOTES ADDITIONAL BRACES REQUIRED AT THE MID HEIGHT OF DISPLAY

EXPOSURE C

HEIGHT ABOVE GRADE = 10'				HEIGHT ABOVE GRADE = 15'			
DISPLAY HEIGHT (FT)		DESIGN WIND VELOCITY		DISPLAY HEIGHT (FT)		DESIGN WIND VELOCITY	
		115 MPH	140 MPH			115 MPH	140 MPH
8	COLUMN FOOTING	W10X33 3.0'X9.5'	W12X40 3.0'X10.5'	8	COLUMN FOOTING	W14X43 3.0'X10.0'	W12X58 3.0'X12.0'
10	COLUMN FOOTING	W14X43 3.0'X10.5'	W12X53 3.0'X11.5'	10	COLUMN FOOTING	W12X53 3.0'X11.5'	W12X65 3.0'X13.5'
12	COLUMN FOOTING	W14X48 3.0'X11.5'	W12X58 4.0'X11.5'	12	COLUMN FOOTING	W14X61 4.0'X12.0'	W18X76 4.0'X13.0'
14	COLUMN FOOTING	W12X53 4.0'X11.0'	W16X67 4.0'X13.0'	14*	COLUMN FOOTING	W21X48 4.0'X12.0'	W21X68 4.0'X14.5'
16	COLUMN FOOTING	W12X65 4.0'X11.5'	W18X76 4.0'X14.0'	16*	COLUMN FOOTING	W21X62 4.0'X13.0'	W18X76 4.0'X16.0'
18*	COLUMN FOOTING	W21X48 4.0'X12.5'	W21X62 4.0'X15.5'	18*	COLUMN FOOTING	W21X68 4.0'X14.0'	W24X84 4.0'X18.0'
20*	COLUMN FOOTING	W21X55 4.0'X13.5'	W21X68 4.0'X17.0'	20*	COLUMN FOOTING	W18X76 4.0'X15.5'	W30X90 5.0'X17.0'

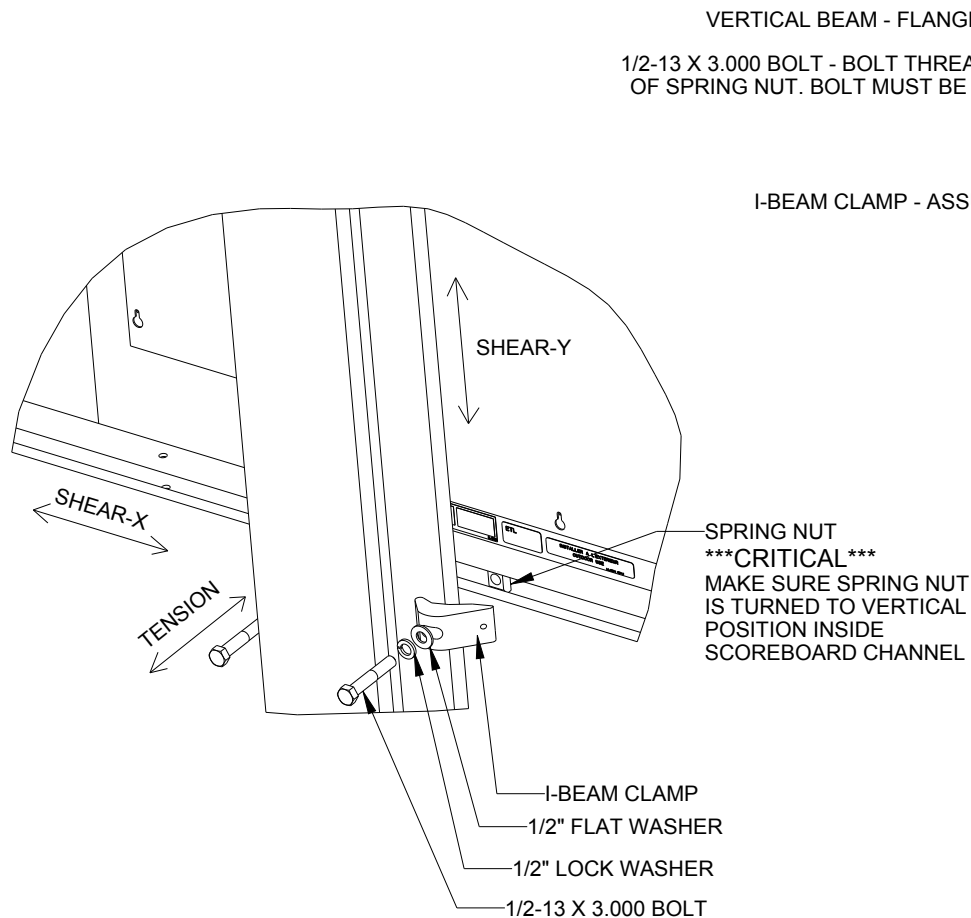
FOOTING DIMENSIONS = DIAMETER X DEPTH

\* DENOTES ADDITIONAL BRACES REQUIRED AT THE MID HEIGHT OF DISPLAY


NOTES:

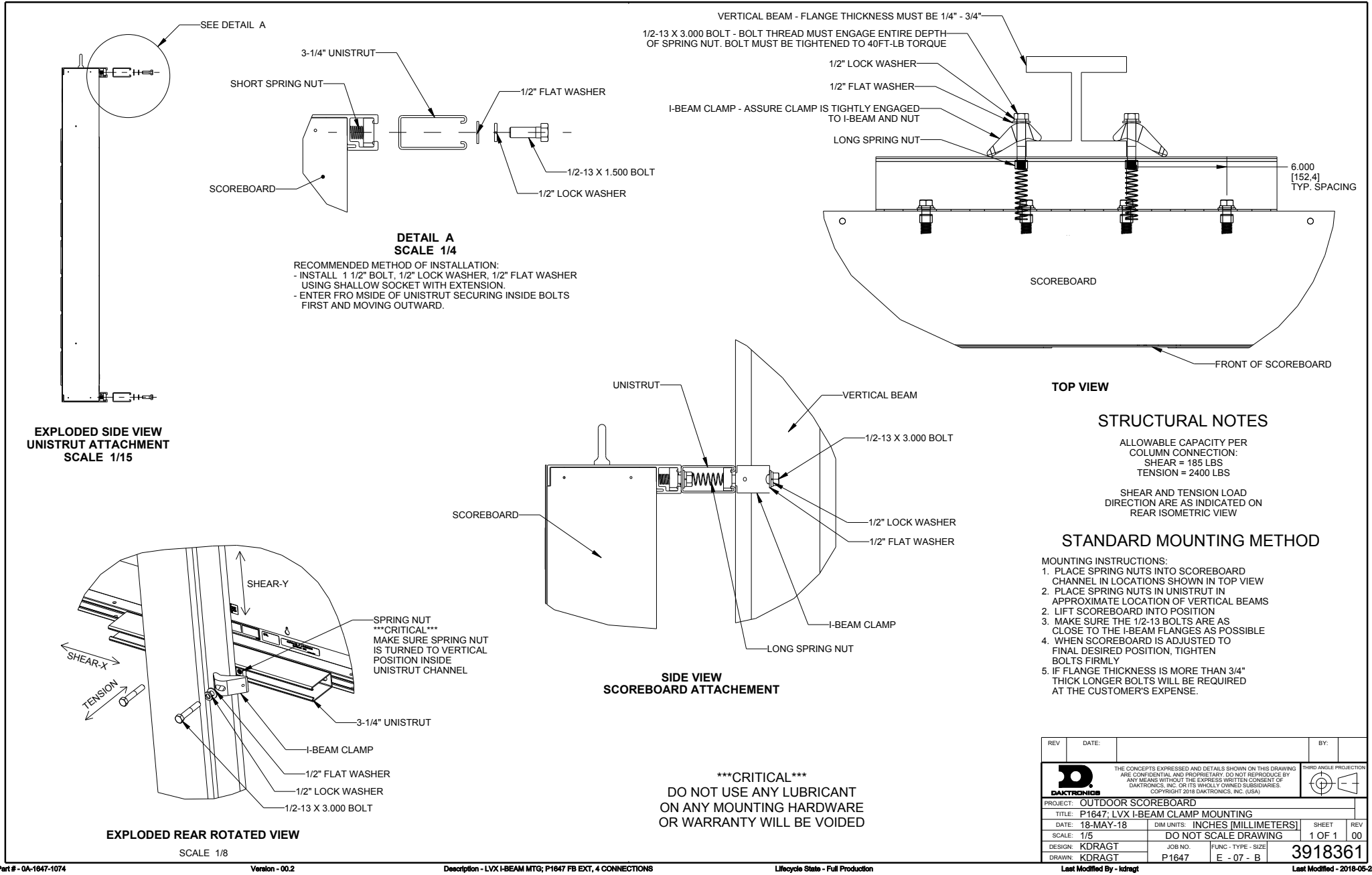
1. FOOTING AND COLUMN SIZES ARE SUGGESTIONS ONLY, PROVIDED TO ASSIST WITH ESTIMATING INSTALLATION COSTS AND ARE NOT INTENDED FOR CONSTRUCTION PURPOSES. THE DESIGN MUST BE CERTIFIED BY A PROFESSIONAL ENGINEER LICENSED IN THE STATE OF THE INSTALLATION BEFORE THEY CAN BE USED FOR FABRICATION OR ERECTION.
2. INTERNATIONAL BUILDING CODE 2012 USED IN DESIGN OF COLUMNS AND FOOTINGS WITH, IMPORTANCE FACTOR=1, Kzt=1.0, Kd=0.85, G=0.85. SEISMIC DESIGN WAS NOT CONSIDERED.
3. FOOTING DIMENSIONS ARE BASED ON ASSUMED SOIL CLASS 4 (ALLOWABLE LATERAL BEARING PRESSURE OF 150 psf).
4. STRUCTURAL STEEL IS GRADE A992 (50 ksi) STEEL. CONCRETE SHALL HAVE A MINIMUM 28 DAY COMPRESSIVE STRENGTH OF 2500 psi.
5. THE AVERAGE DISPLAY WEIGHT FOR A LAYOUT CAN NOT EXCEED 8 PSF.
6. DAKTRONICS INC. IS NOT RESPONSIBLE FOR STRUCTURES DESIGNED AND INSTALLED BY OTHERS.
7. LOCAL BUILDING OFFICIALS SHOULD BE CONTACTED TO DETERMINE THE WIND SPEED AND EXPOSURE CATEGORY FOR THE PROPOSED SIGN LOCATION. THE EXPOSURE CATEGORY C IS DEFINED AS:  
EXPOSURE B - URBAN AND SUBURBAN AREAS, OR OTHER TERRAIN WITH NUMEROUS SPACED OBSTRUCTIONS HAVING THE SIZE OF SINGLE-FAMILY DWELLINGS OR LARGER. THESE CONDITIONS MUST PREVAIL FOR A DISTANCE FROM THE SIGN OF AT LEAST 2,600 FT OR 20 TIMES THE SIGN HEIGHT, WHICHEVER IS GREATER  
EXPOSURE C - OPEN TERRAIN WITH SCATTERED OBSTRUCTIONS HAVING HEIGHTS GENERALLY LESS THAN 30 FT. THIS CATEGORY INCLUDES FLAT OPEN COUNTRY, GRASSLANDS, AND ALL WATER SURFACES IN HURRICANE PRONE REGIONS.
8. FOR SPECIFIC PRODUCT DETAILS ON WEIGHT, MOUNTING, ETC. REFER TO THE INDIVIDUAL PRODUCT SPECIFICATION SHEETS.

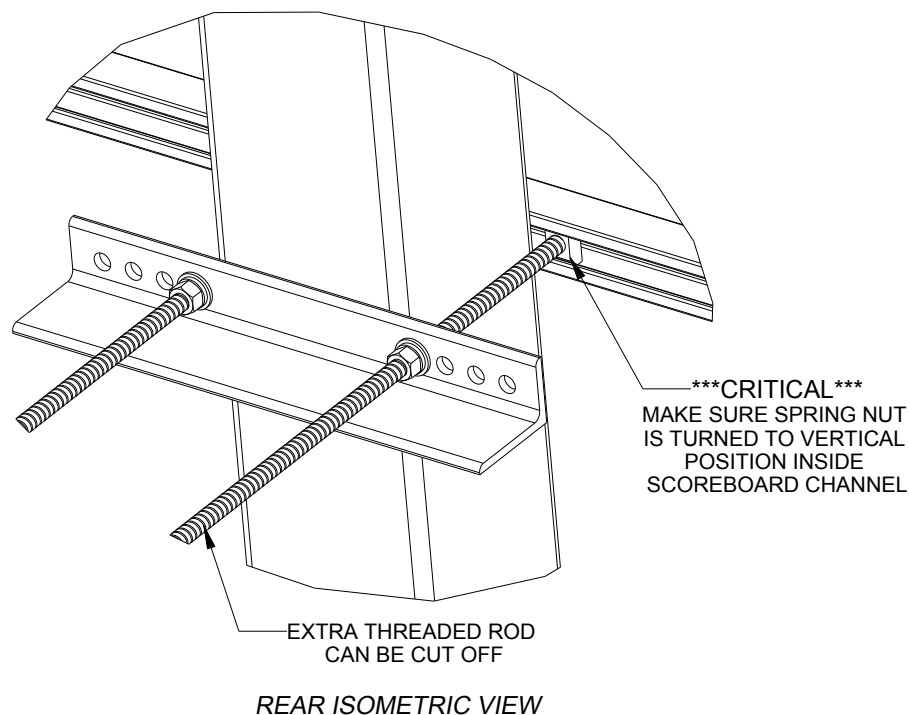
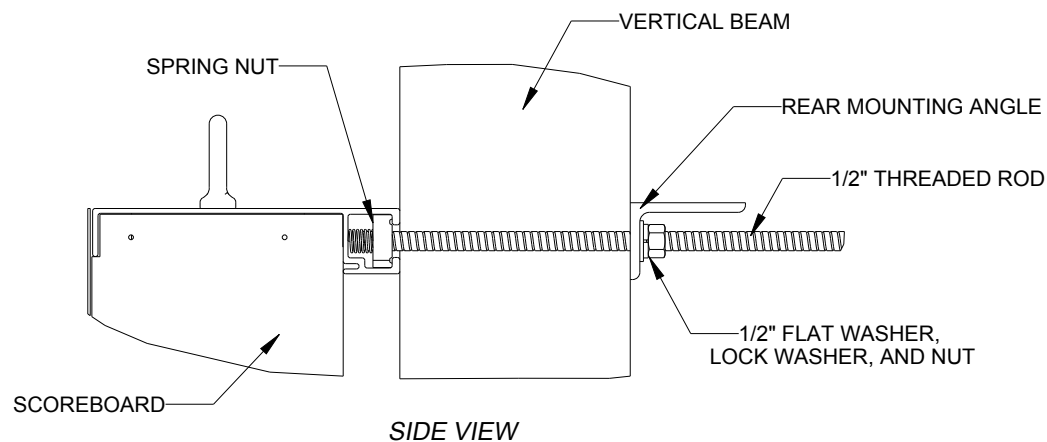
		DAKTRONICS, INC. BROOKINGS, SD 57006 DO NOT SCALE DRAWING		THE CONCEPTS EXPRESSED AND DETAILS SHOWN ON THIS DRAWING ARE CONFIDENTIAL AND PROPRIETARY. DO NOT REPRODUCE BY ANY MEANS WITHOUT THE EXPRESS WRITTEN CONSENT OF DAKTRONICS, INC. COPYRIGHT 2014 DAKTRONICS, INC.	
		PROJ: OUTDOOR SCOREBOARD INSTALLATION TITLE: 25' WIDTH SCOREBOARD INSTALLATION SPECS. DESIGN: TTASCHN DRAWN: TTASCHN DATE: 22JUL14 SCALE: 1/16" = 1'			
SHEET		REV		JOB NO:	
		00		P1538	
				FUNC-TYPE-SIZE	
				E-10-A	
1183308					



05	22 DEC 15	PER EC-22871; ADDED LUBRICANT NOTE	PJS 18704	
04	06 JAN 14	ADDED ALLOWABLE TENSION AND SHEAR CAPACITY DETAILS	JAVA	
03	23 OCT 13	PER EC-12382; CHANGED BOLT TORQUE FROM 30 FT-LB TO 40 FT-LB	NJM	
02	07 MAR 12	ADDED STANDARD MOUNTING METHODS NOTES	KDD	
01	21 FEB 12	CHANGED ROCKER TO I-BEAM	KDD	
REV	DATE:		BY:	

 <b>DAKTRONICS</b>		THE CONCEPTS EXPRESSED AND DETAILS SHOWN ON THIS DRAWING ARE CONFIDENTIAL AND PROPRIETARY. DO NOT REPRODUCE BY ANY MEANS WITHOUT THE EXPRESS WRITTEN CONSENT OF DAKTRONICS, INC. OR ITS WHOLLY OWNED SUBSIDIARIES. COPYRIGHT 2016 DAKTRONICS, INC. (USA)			
PROJECT: OUTDOOR SCOREBOARD					
TITLE: P1647; I-BEAM CLAMP MOUNTING					
DATE: 22-DEC-15		DIM UNITS: INCHES [MILLIMETERS]		SHEET	REV
SCALE: 1/8		DO NOT SCALE DRAWING		1 OF 1	05
DESIGN: MCARSRU		JOB NO.		FUNC - TYPE - SIZE	
DRAWN: MCARSRU		P1647		E - 07 - A	
1052565					

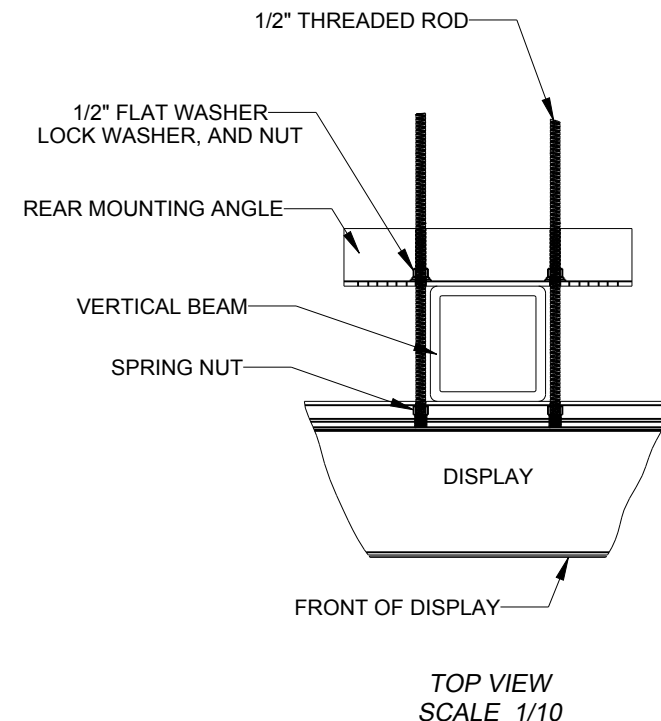




**STRUCTURAL NOTES:**  
- BOLT TORQUE: 30 FT-LB

**NOTES:**

- THREADED RODS RUN ALONG BOTH SIDES OF BEAM
- RODS DO NOT PASS THROUGH THE FLANGES OF THE BEAM
- NO DRILLING NECESSARY
- MAKE SURE SPRING NUT IS PERPENDICULAR TO CHANNEL OPENING ON SCOREBOARD

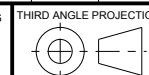


**\*\*\*CRITICAL\*\*\***  
**DO NOT USE ANY LUBRICANT**  
**ON ANY MOUNTING HARDWARE**  
**OR WARRANTY WILL BE VOIDED**

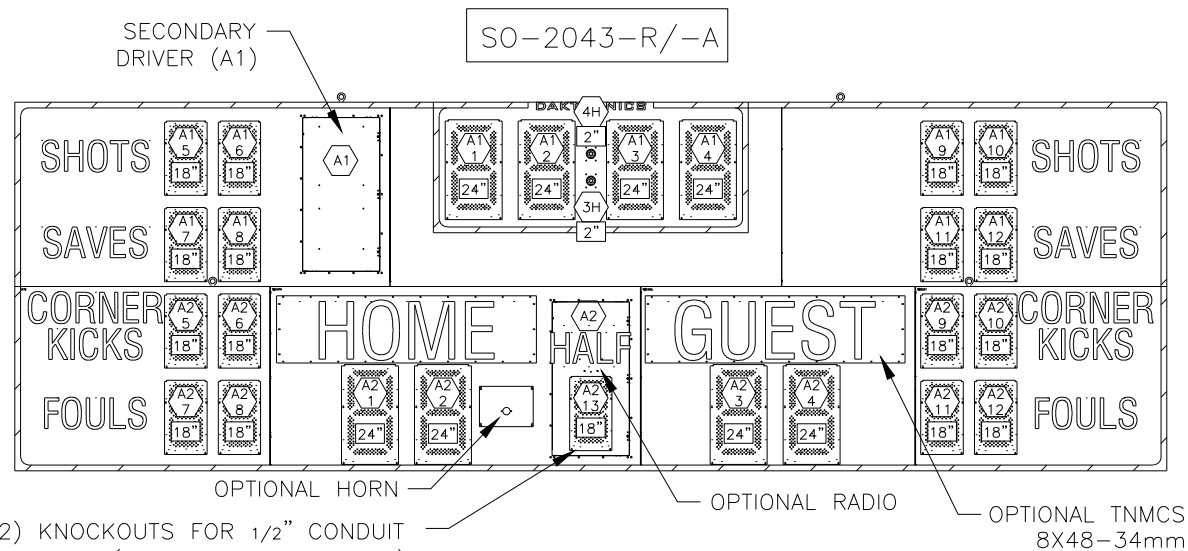
04	22 DEC 15	PER EC-22871; ADDED LUBRICANT WARNING	PJS 18704	
03	03 JULY 13	ADDED STRUCTURAL NOTE	TTF	
02	20 SEP 12	PER EC-7114; REMOVED CHAMFER FROM 0M-133259	LMG	
01	06 OCT 11	REPLACED VERTICAL I-BEAM WITH 6" X 6" SQUARE TUBE	JAVA	
REV	DATE:		BY:	



THE CONCEPTS EXPRESSED AND DETAILS SHOWN ON THIS DRAWING ARE CONFIDENTIAL AND PROPRIETARY. DO NOT REPRODUCE BY ANY MEANS WITHOUT THE EXPRESS WRITTEN CONSENT OF DAKTRONICS, INC. OR ITS WHOLLY OWNED SUBSIDIARIES. COPYRIGHT 2016 DAKTRONICS, INC. (USA)

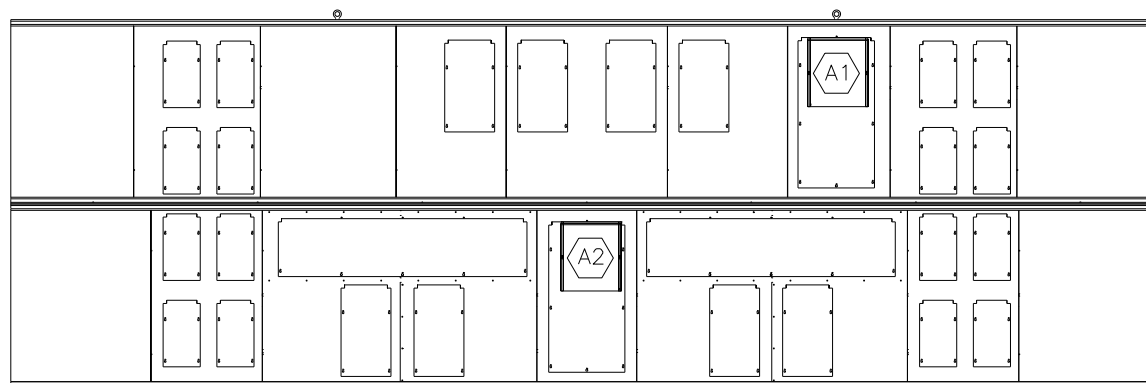


PROJECT: OUTDOOR SCOREBOARDS				
TITLE: P1647; POLE MOUNTING OPTIONS				
DATE: 22-DEC-15	DIM UNITS: INCHES [MILLIMETERS]		SHEET	REV
SCALE: 1/5	DO NOT SCALE DRAWING		1 OF 1	04
DESIGN: DOPPELT	JOB NO.	FUNC - TYPE - SIZE	1048184	
DRAWN: DOPPELT	P1647	E - 10 - A		



PRIMARY DRIVER (A2) KNOCKOUTS FOR 1/2" CONDUIT  
SIGNAL OPTION ON THIS DRIVER (WIRE, FIBER, OR RADIO)

FRONT VIEW



REAR VIEW



NOTES:

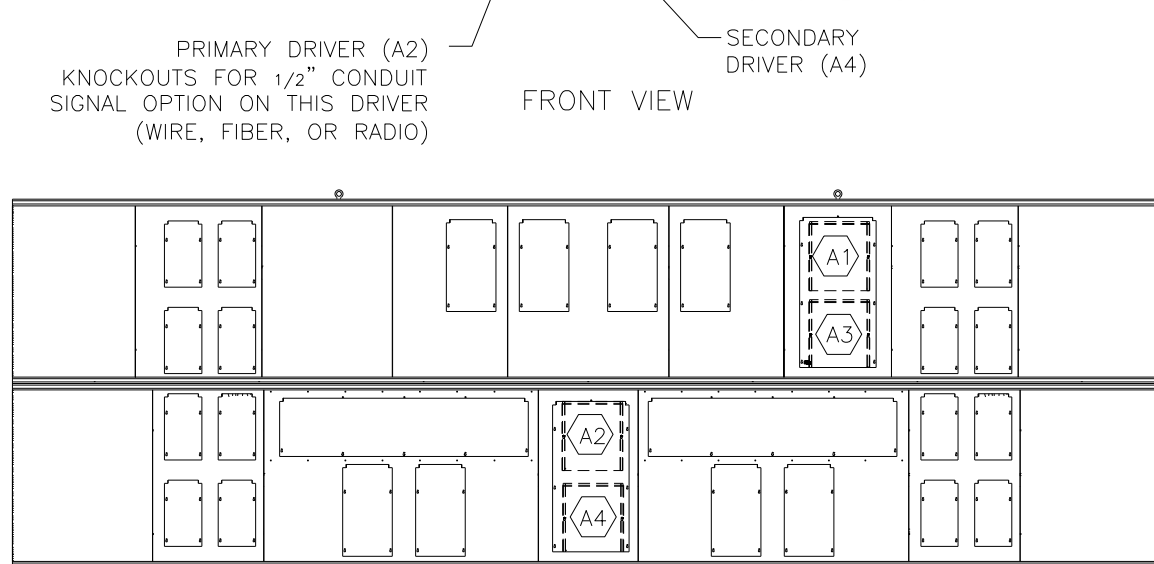
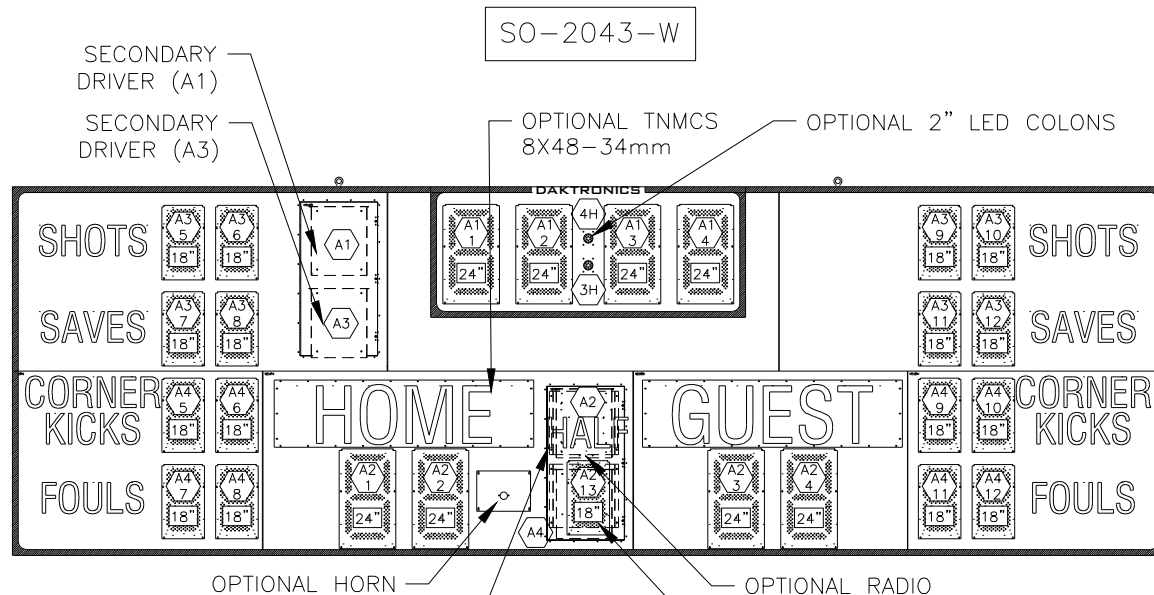
(A1 5) = LED DRIVER NUMBER &  
LED DRIVER CONNECTOR  
WIRED TO THAT DIGIT

18" = DIGIT SIZE

(A1) = DRIVER NUMBER



REV 06	DATE: 04 AUG 20	PER CN-107384 REMOVED LABELS TO MOVE TO NEW STANDARD	BY: TAN
REV 05	DATE: 25 FEB 19	PER CN-70699, UPDATED LOCATION OF DAKTRONICS LOGO	BY: KDM
REV 04	DATE: 27 FEB 15	PER EC-17119, REMOVED DETAIL A AND B ADDED SIGNAL OPTION NOTE CHANGED MASTER AND SLAVE DRIVER NAMES	BY: KDB
REV 03	DATE: 17 JUL 12	CHANGED HALF TO PLUG 13 PER EC-6556	BY: JML
REV 02	DATE: 29 MAR 12	PER EC-4630 UPDATED FRSHTS, BKSHTS, AND DOORS TO NEW STYLE	BY: ZR
REV 01	DATE: 20 JUL 11	UPDATED DRIVER NOTES	BY: MBJ

		THE CONCEPTS EXPRESSED AND DETAILS SHOWN ON THIS DRAWING ARE CONFIDENTIAL AND PROPRIETARY. DO NOT REPRODUCE BY ANY MEANS WITHOUT THE EXPRESS WRITTEN CONSENT OF DAKTRONICS, INC. OR ITS WHOLLY OWNED SUBSIDIARIES. COPYRIGHT 2019 DAKTRONICS, INC. (USA)			
PROJECT: OUTDOOR LED SCOREBOARDS					
TITLE: COMPONENT LOCATION; SO-2043-R/-A					
DATE: 12 JUL 11		DIM UNITS: INCHES [MILLIMETERS]		SHEET	REV
SCALE: 1/50		DO NOT SCALE DRAWING			06
DESIGN: DOPPELT		JOB NO.		FUNC - TYPE - SIZE	
DRAWN: JVANAAR		P1647		R - 08 - A	
				1061235	



- NOTES:
- A1 5 = LED DRIVER NUMBER & LED DRIVER CONNECTOR WIRED TO THAT DIGIT
  - 18" = DIGIT SIZE
  - A1 = DRIVER NUMBER

REV 03	DATE: 20 AUG 20	PER CN-108381 REMOVED LABELS TO MOVE TO NEW STANDARD	BY: TAN
REV 02	DATE: 25 FEB 19	PER CN-70699, UPDATED LOCATION OF DAKTRONICS LOGO	BY: KDM
REV 01	DATE: 1 OCT 15	PER EC-19214, CHANGED DIGIT DESIGNATION TO MATCH RED/AMBER SCOREBOARD	BY: MTR

	THE CONCEPTS EXPRESSED AND DETAILS SHOWN ON THIS DRAWING ARE CONFIDENTIAL AND PROPRIETARY. DO NOT REPRODUCE BY ANY MEANS WITHOUT THE EXPRESS WRITTEN CONSENT OF DAKTRONICS, INC. OR ITS WHOLLY OWNED SUBSIDIARIES. COPYRIGHT 2019 DAKTRONICS, INC. (USA)					
	PROJECT: OUTDOOR LED SCOREBOARDS					
	TITLE: COMPONENT LOCATION; SO-2043-W					
	DATE: 23 MAR 15		DIM UNITS: INCHES [MILLIMETERS]		SHEET	REV
SCALE: 1/50		DO NOT SCALE DRAWING				03
DESIGN: DOPPELT		JOB NO.		FUNC - TYPE - SIZE		
DRAWN: ZWOODWA		P1647		R - 08 - A		
					3025539	