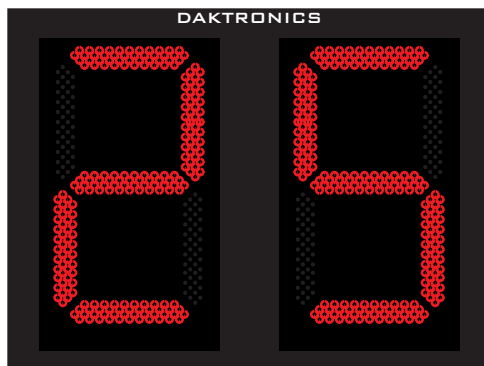


DAKTRONICS TI-2003 PRODUCT SPECIFICATIONS



This outdoor LED timer can be configured to count up or down from any preset number from 0 to 99, great for a baseball timer or football delay of game clock. The timer is upgradable for portable use.

DIMENSIONS	UNCRATED WEIGHT	POWER (120 VAC)*	
3'-0" H x 4'-0" W x 8" D (914 mm x 1.22 m x 203 mm)	65 lb (29 kg)	Red/Amber Digits	45 Watts, 0.4 Amp
		White Digits	95 Watts, 0.8 Amp

**Display requires a dedicated circuit. Models with 240 VAC power at half the indicated amperage are also offered (International Use Only).*

DIGITS

- All digits are 30" (762 mm) high.
- Select red, amber, or white LED digits.
- Timer features weather-sealed PanaView® digits (see [DD2495646](#)).
- Digits may be dimmed for night viewing.

DISPLAY COLOR

Choose a color from the Daktronics standard paint book (see [SL-02730](#)).

CONSTRUCTION

Alcoa aluminum alloy 5052 for excellent corrosion resistance

PRODUCT SAFETY APPROVAL

ETL-listed, tested to CSA standards, and CE-labeled

OPERATING TEMPERATURES

- Display: -22° to 122° Fahrenheit (-30° to 50° Celsius)
- Console: 32° to 130° Fahrenheit (0° to 54° Celsius)

WWW.DAKTRONICS.COM E-MAIL: SALES@DAKTRONICS.COM

201 Daktronics Drive, PO Box 5128, Brookings, SD 57006
Phone: 1-800-325-8766 or 605-692-0200 Fax: 605-697-4746
DD1757027 021325 Page 1 of 5



DAKTRONICS TI-2003 PRODUCT SPECIFICATIONS

CONTROL CONSOLE	CONTROL OPTIONS
All Sport® 1600* (see SL-04352) <i>*May be upgraded to All Sport 5000 (see SL-03991)</i>	Wireless: 2.4 GHz spread spectrum radios feature 64 non-interfering channels and 8 broadcast groups (see SL-04370). This is a popular upgrade. <hr/> Wired: Two-pair shielded cable of 22 AWG minimum is required. A cover plate with mounted connector and standard 2" x 4" x 2" (51 mm x 102 mm x 51 mm) outlet box is provided. Connector mates with signal cable from control console.
RC-200 (see DD3715714)	Wireless handheld controller features 2.4 GHz spread spectrum radio with 64 non-interfering channels and 8-10 hours of operation via internal rechargeable battery.
DAK Score & MX-1 (see DD3888368)	CUSTOMER-SUPPLIED mobile device or tablet with DAK Score app installed communicates via Bluetooth® wireless technology to an MX-1 Interface Box that controls the scoreboard through 2.4 GHz radio or wired connection. Segment/practice timing operations only.

MOUNTING

Display is typically mounted on one vertical beam or pole. Hardware to mount display on two beams is included; hardware for more beams is at additional cost. Standard mounting uses angle brackets; maximum beam width is 10" (254 mm) and maximum beam depth is 13" (330 mm).

SERVICE ACCESS

Digit panels and electronics are serviced from the front of the display.

GENERAL INFORMATION

Display provides two-digit clock timing capabilities. 100% solid state electronics are housed in an all aluminum cabinet. Display is shipped in one section. Display power is to be provided on a dedicated circuit to prevent loss of game information due to failure of another component on the circuit. Specifications and pricing are subject to change without notice.

OPTIONS & ACCESSORIES

- Border striping in multiple colors (see [DD2101644](#))
- Horn
- Power cord and signal jack for portability
- Carrying handles for portability
- Four-wheel cart for portability
- Individual digit protective screens (see [SL-04939](#))
- Advertising/identification panels

ADVERTISING/IDENTIFICATION PANELS

Backlit & Non-Backlit:

- 1'-6" H x 4'-0" W (457 mm x 1.22 m)
- 2'-0" H x 4'-0" W (610 mm x 1.22 m)
- 2'-6" H x 4'-0" W (762 mm x 1.22 m)

Non-Backlit Sides:*

- 3'-0" H x 6'-0" W (914 mm x 1.83 m)

**At least 2 beams required for mounting side ad panels.
 For additional non-backlit panel sizes, see [SL-03761](#).*

FOR ADDITIONAL INFORMATION

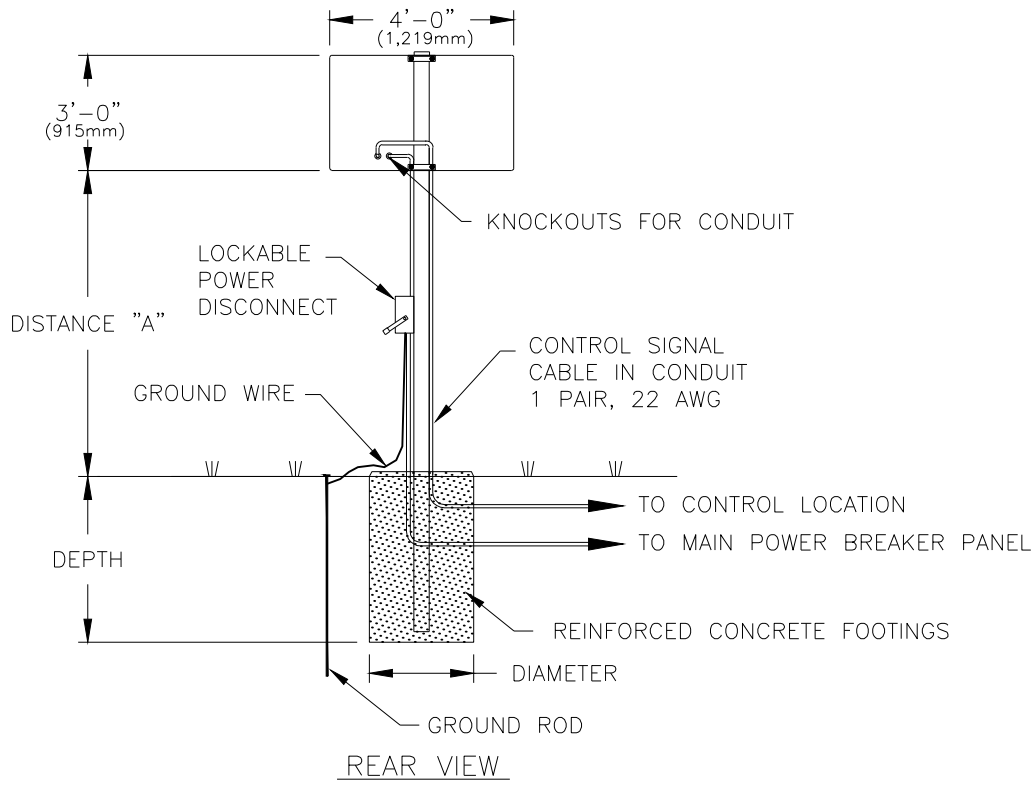
- Installation Specifications: DWG-169367 (attached)
- Pole Mounting: DWG-1130246 (attached)
- Component Locations: DWG-1157755 (attached)
- Architectural Specifications: See [SL-05215](#)

The Bluetooth® word mark and logos are registered trademarks owned by the Bluetooth SIG, Inc. and any use of such marks by Daktronics, Inc. is under license.

WWW.DAKTRONICS.COM E-MAIL: SALES@DAKTRONICS.COM

All Sport® and PanaView® are trademarks of Daktronics, Inc.
 DD1757027 021325 Page 2 of 5 Copyright © 2008-2025 Daktronics, Inc.





NOTES:

1. FOOTING AND COLUMN SIZES ARE SUGGESTIONS ONLY, PROVIDED TO ASSIST WITH ESTIMATING INSTALLATION COSTS AND ARE NOT INTENDED FOR CONSTRUCTION PURPOSES. THE DESIGN MUST BE CERTIFIED BY A PROFESSIONAL ENGINEER LICENSED IN THE STATE OF THE INSTALLATION BEFORE THEY CAN BE USED FOR FABRICATION OR ERECTION.

2. INTERNATIONAL BUILDING CODE 2012 USED IN DESIGN OF COLUMNS AND FOOTINGS WITH IMPORTANCE FACTOR=1, Kzt=1.0, Kd=0.85, G=0.85. SEISMIC DESIGN WAS NOT CONSIDERED.

3. FOOTING DIMENSIONS ARE BASED ON ASSUMED SOIL CLASS 4 (ALLOWABLE LATERAL BEARING PRESSURE OF 150 psf).

4. STRUCTURAL STEEL IS GRADE A500 GRADE B (46 ksi) STEEL. CONCRETE SHALL HAVE A MINIMUM 28 DAY COMPRESSIVE STRENGTH OF 2500 psi.

5. THE AVERAGE DISPLAY WEIGHT FOR A LAYOUT CAN NOT EXCEED 8 PSF.

6. DAKTRONICS INC. IS NOT RESPONSIBLE FOR STRUCTURES DESIGNED AND INSTALLED BY OTHERS.

7. FOR SPECIFIC PRODUCT DETAILS ON WEIGHT, MOUNTING, ETC. REFER TO THE INDIVIDUAL PRODUCT SPECIFICATION SHEETS.

8. LOCAL BUILDING OFFICIALS SHOULD BE CONTACTED TO DETERMINE THE WIND SPEED AND EXPOSURE CATEGORY FOR THE PROPOSED SIGN LOCATION. THE EXPOSURE CATEGORIES B AND C ARE DEFINED AS:

EXPOSURE B - URBAN AND SUBURBAN AREAS, WOODED AREAS, OR OTHER TERRAIN WITH NUMEROUS CLOSELY SPACED OBSTRUCTIONS HAVING THE SIZE OF SINGLE-FAMILY DWELLINGS OR LARGER. THESE CONDITIONS MUST PREVAIL FOR A DISTANCE FROM THE SIGN OF AT LEAST 2,600 ft OR 20 TIMES THE SIGN HEIGHT, WHICHEVER IS GREATER

EXPOSURE C - OPEN TERRAIN WITH SCATTERED OBSTRUCTIONS HAVING HEIGHTS GENERALLY LESS THAN 30 FT. THIS CATEGORY INCLUDES FLAT OPEN COUNTRY, GRASSLANDS, AND ALL WATER SURFACES IN HURRICANE PRONE REGIONS.

EXPOSURE B

DESIGN WIND SPEED (ASCE 7-10)				
HEIGHT ABOVE GRADE (ft) DISTANCE "A"	DISPLAY HEIGHT = 3'-0"			
		115	130	150
10	COLUMNS	HSS 4 x 4 x 3/16"	HSS 4 x 4 x 3/16"	HSS 4 x 4 x 3/16"
	FOOTINGS	Ø 2' x 3.5'	Ø 2' x 4'	Ø 2' x 4'
15	COLUMNS	HSS 4 x 4 x 3/16"	HSS 4 x 4 x 3/16"	HSS 4.5 x 4.5 x 3/16"
	FOOTINGS	Ø 2' x 4'	Ø 2' x 4'	Ø 2' x 4.5'

* DENOTES BUCKLING BRACE REQUIRED
FOOTING DIMENSIONS = DIA. x DEPTH

EXPOSURE C

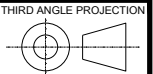
DESIGN WIND SPEED (ASCE 7-10)				
HEIGHT ABOVE GRADE (ft) DISTANCE "A"	DISPLAY HEIGHT = 3'-0"			
		115	130	150
10	COLUMNS	HSS 4 x 4 x 3/16"	HSS 4 x 4 x 3/16"	HSS 4.5 x 4.5 x 3/16"
	FOOTINGS	Ø 2' x 4'	Ø 2' x 4.5'	Ø 2' x 5'
15	COLUMNS	HSS 4.5 x 4.5 x 3/16"	HSS 5 x 5 x 3/16"	HSS 5 x 5 x 1/4"
	FOOTINGS	Ø 2' x 4.5'	Ø 2' x 5'	Ø 2' x 5.5'

* DENOTES BUCKLING BRACE REQUIRED
FOOTING DIMENSIONS = DIA. x DEPTH

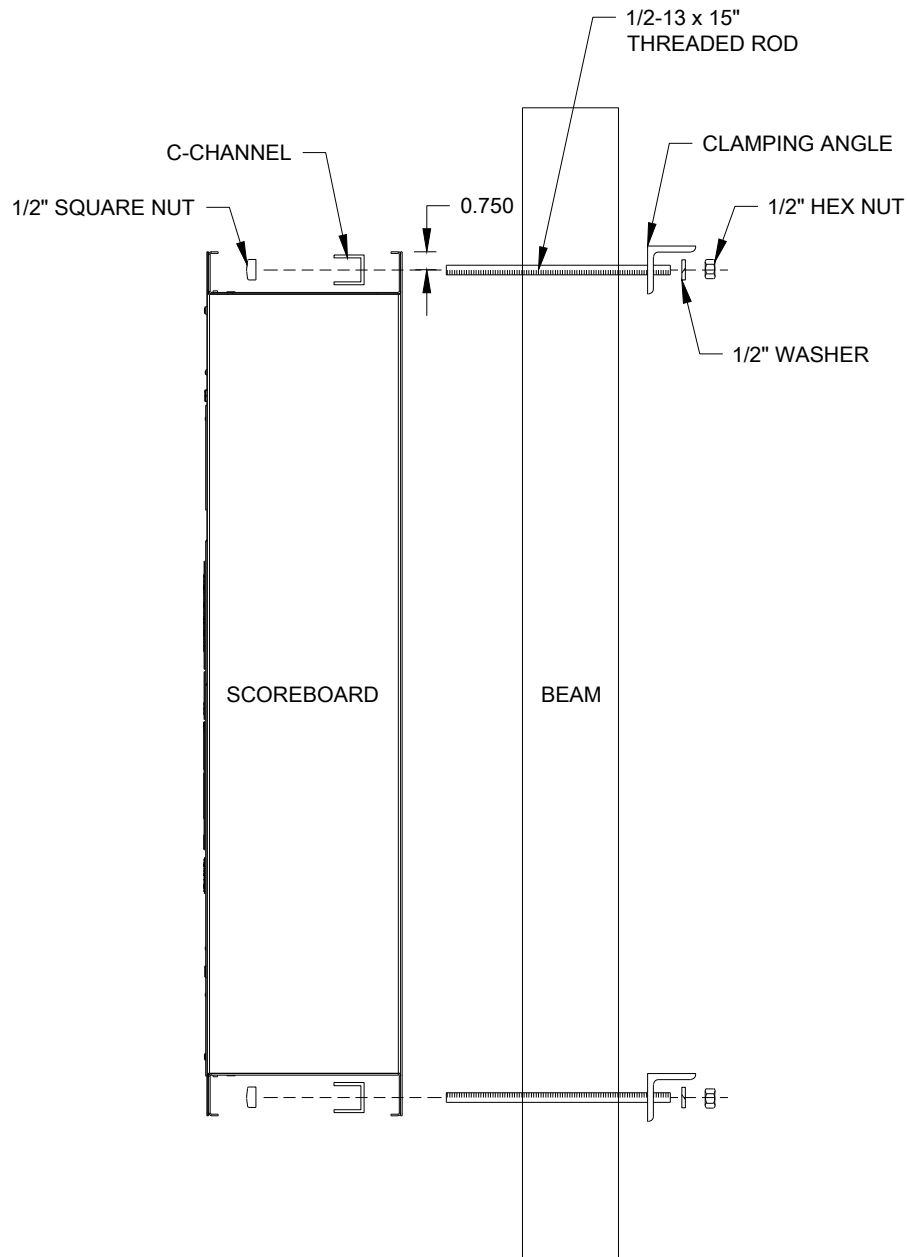
REV 03	DATE: 23 AUG 16	CHANGED 3 TO 3/16" IN TABLES	BY: KDD
REV 02	DATE: 03 APR 14	UPDATED DESIGN WIND SPEED TABLE AND ADDED FOOTING TEXT	BY: JH
REV 01	DATE: 25 OCT 07	ADDED MILLIMETERS DIMENSIONS	BY: KDD



THE CONCEPTS EXPRESSED AND DETAILS SHOWN ON THIS DRAWING ARE CONFIDENTIAL AND PROPRIETARY. DO NOT REPRODUCE BY ANY MEANS WITHOUT THE EXPRESS WRITTEN CONSENT OF DAKTRONICS, INC. OR ITS WHOLLY OWNED SUBSIDIARIES. COPYRIGHT 2016 DAKTRONICS, INC. (USA)




PROJECT: OUTDOOR SCOREBOARDS			
TITLE: INSTALLATION SPECIFICATIONS; TI-2003			
DATE: 18 JUN 02	DIM UNITS: INCHES [MILLIMETERS]		SHEET
SCALE: 1=50	DO NOT SCALE DRAWING		REV 03
DESIGN: MCOPLAN	JOB NO. P1091	FUNC - TYPE - SIZE E - 10 - A	169367
DRAWN: MCOPLAN			



MOUNTING INSTRUCTIONS:

1. USE THE MOUNTING CHANNEL TO DETERMINE WHICH HOLE COMBINATION SHOULD BE USED. BE SURE TO KEEP THE BOLT AS CLOSE TO THE BEAM AS POSSIBLE.
2. USING THE MOUNTING CHANNEL AS A TEMPLATE, DRILL 9/16" HOLES IN THE UPPER AND LOWER REAR FLANGE OF SCOREBOARDS WHERE THE SUPPORTS WILL GO.
3. PLACE SQUARE NUTS INSIDE CHANNEL AND THREAD BOLTS THROUGH.
4. LIFT SCOREBOARD INTO POSITION WITH BOLTS STILL IN PLACE.
5. PLACE MOUNTING ANGLES OVER EACH PAIR OF BOLTS AND SECURE WITH LOCK WASHERS AND HEX NUTS.
6. WHEN SCOREBOARD IS ADJUSTED TO FINAL DESIRED POSITION, TIGHTEN HEX NUTS FIRMLY.

 DAKTRONICS, INC. BROOKINGS, SD 57006 DO NOT SCALE DRAWING		THE CONCEPTS EXPRESSED AND DETAILS SHOWN ON THIS DRAWING ARE CONFIDENTIAL AND PROPRIETARY. DO NOT REPRODUCE BY ANY MEANS WITHOUT THE EXPRESSED WRITTEN CONSENT OF DAKTRONICS, INC. COPYRIGHT 2013 DAKTRONICS, INC.	
PROJ: OUTDOOR SHEET METAL SCOREBOARDS			
TITLE: SCOREBOARD MOUNTING			
DESIGN: KDRAGT		DRAWN: KDRAGT	
SCALE: 1=8		DATE: 14 MAR 13	
SHEET	REV	JOB NO:	FUNC - TYPE - SIZE
00	P1753	E - 10 - A	1130246

TI-2003-R/A/W

PRIMARY DRIVER (A1)
(KNOCKOUTS FOR 1/2" CONDUIT)
SIGNAL OPTION ON THIS DRIVER
(WIRE, FIBER, OR RADIO)

OPTIONAL RADIO

OPTIONAL RADIO

KNOCKOUT FOR
OPTIONAL HORN
CONTROL SWITCH

NOTES:

FRONT VIEW

1


= DRIVER CONNECTOR
WIRED TO THAT DIGIT

A1

= LED DRIVER NUMBER

30"

= DIGIT SIZE

REV 04	DATE: 28 MAR 23	PER CN-155008, ADDED HORN SWITCH OPTION	BY: KDM
REV 03	DATE: 19 AUG 20	PER CN-108352 REMOVED LABELS TO MOVE TO NEW STANDARD	BY: TAN
REV 02	DATE: 03 NOV 16	PER EC-22891, ADDED HOLES FOR ANTENNA, RADIO AND ADDED BRACKET	BY: MJR
REV 01	DATE: 03 MAR 15	PER EC-17119, ADDED SIGNAL OPTION NOTE AND REMOVED DETAIL VIEWS	BY: ZSW
REV	DATE:		BY:
<div>  <small>THE CONCEPTS EXPRESSED AND DETAILS SHOWN ON THIS DRAWING ARE CONFIDENTIAL AND PROPRIETARY. DO NOT REPRODUCE BY ANY MEANS WITHOUT THE EXPRESS WRITTEN CONSENT OF DAKTRONICS, INC. OR ITS WHOLLY OWNED SUBSIDIARIES. COPYRIGHT 2016 DAKTRONICS, INC. (USA)</small> </div>			
<div> <div>PROJECT: OUTDOOR SHEET METAL SCOREBOARDS</div> <div>TITLE: COMPONENT LOCATION; TI-2003-101X-R/A/W</div> <div>DATE: 3 OCT 13</div> <div>DIM UNITS: INCHES [MILLIMETERS]</div> <div>SCALE: 1=15</div> <div>DO NOT SCALE DRAWING</div> <div>DESIGN: DOPPELT</div> <div>JOB NO. P1753</div> <div>FUNC - TYPE - SIZE E - 10 - B</div> <div>DRAWN: NMCKENZ</div> <div>SHEET 04</div> <div>REV 04</div> <div>1157755</div> </div>			