

APPLICABLE DESIGN CODE: IBC 2006/2009

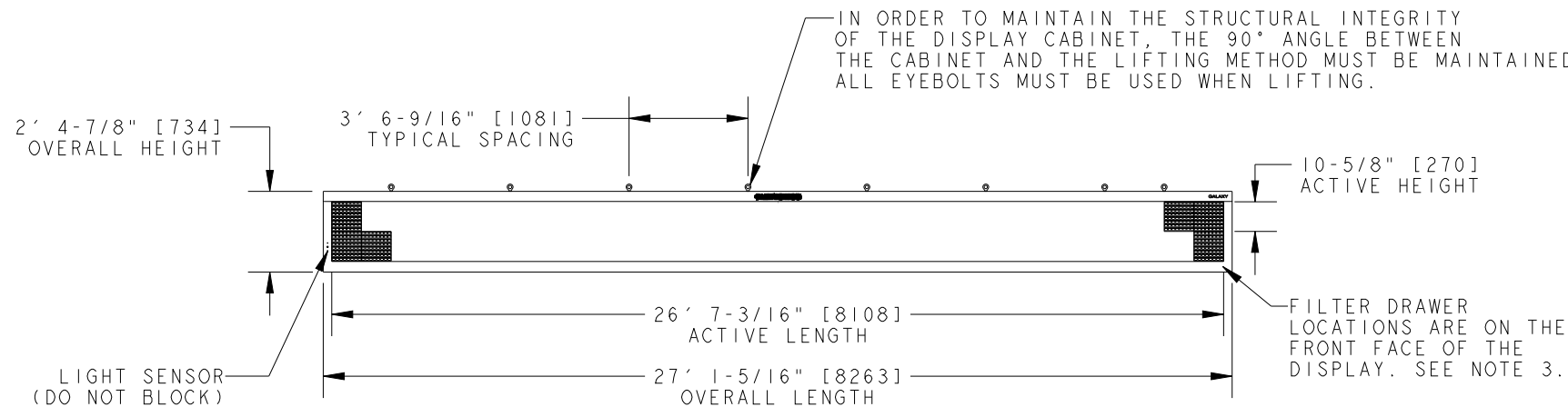
DESIGN WIND PRESSURE "P"

P < 110 psf

CHART 1

| | | POWER REQUIREMENTS PER SINGLE FACE | | |
|---------|---------|------------------------------------|-------------------|--------------------|
| COLOR | WATTS | 120 VAC, 60 Hz | 120/240VAC, 60 Hz | 240VAC, 1PH, 50 Hz |
| | | (2 WIRE + GND) | (3 WIRE + GND) | (2 WIRE + GND) |
| | | AMPS | AMPS* | AMPS |
| RED 1 | 077.000 | 8.97 | N/A | 4.49 |
| AMBER 1 | 292.000 | 10.77 | N/A | 5.38 |
| RGB 2 | 166.000 | N/A | 9.27 | 9.02 |

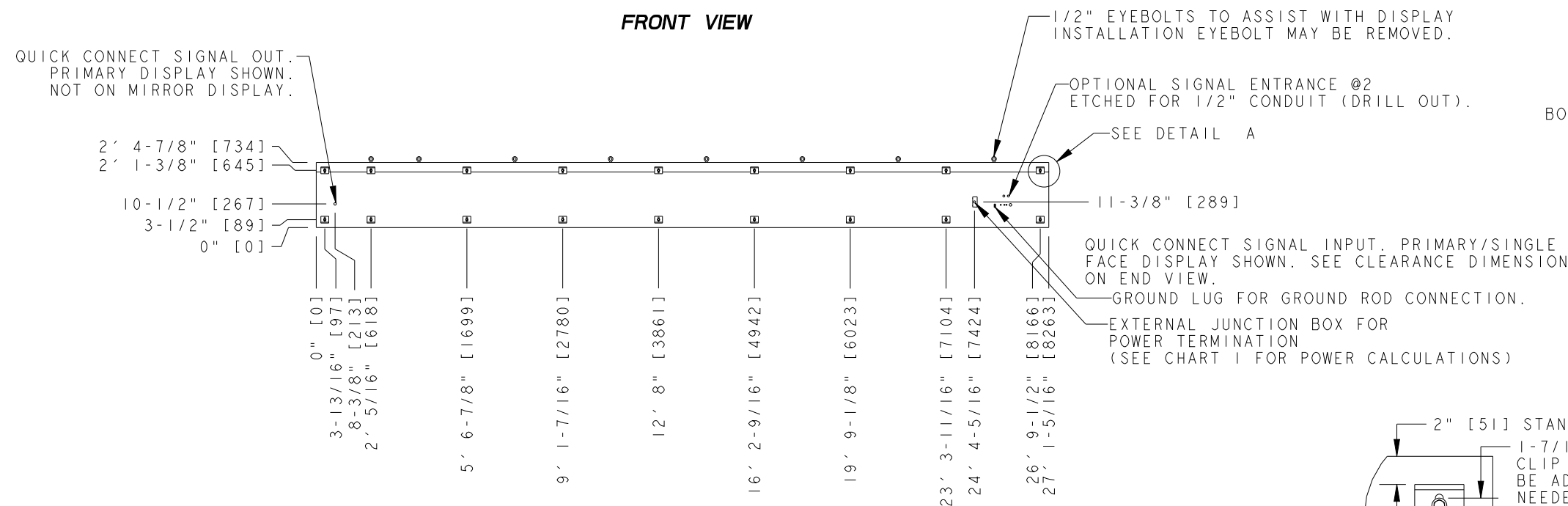
*AMPS LISTED ARE HIGHEST LEG OF CIRCUIT.



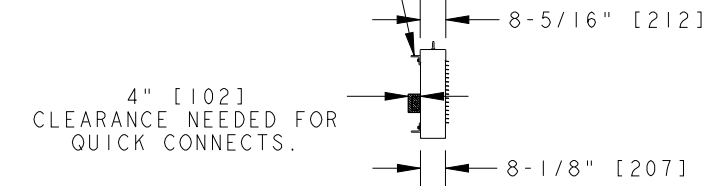
NOTES:

- EYEBOLTS MAY NOT BE USED FOR PERMANENT INSTALLATION.
- ALL CLIP ANGLES (OR THEIR LOCATIONS) MUST BE USED FOR DISPLAY INSTALLATION.
- DISPLAY IS FRONT VENTILATED SO NO PORTION OF THE FRONT FACE CAN BE COVERED. AIR INTAKES ARE FILTERED. FILTERS ARE LOCATED IN DRAWERS ON FACE AND WILL NEED TO BE PERIODICALLY CLEANED IN ORDER TO PROVIDE THE PROPER DISPAY VENTILATION. REFER TO THE MAINTENANCE DOCUMENT (DD-1564079) FOR FILTER MAINTENANCE INSTRUCTIONS.
- ALL DIMENSIONS ARE IN FEET AND INCHES [MILLIMETERS].
- DISPLAY IS ALL ALUMINUM CONSTRUCTION.
- THIS DISPLAY IS SHIPPED AND INSTALLED AS A SINGLE UNIT.
- DISPLAY CABINET COLOR IS SEMI-GLOSS BLACK.
- FRONT ACCESS FOR SERVICE.
- ESTIMATED WEIGHT IS: 540 LBS [245 KGS].
- DISPLAY L.E.D. COLOR IS RED, AMBER, OR RGB.
- POWER REQUIREMENTS ARE LISTED IN CHART 1 OF THIS DRAWING.
- DAKTRONICS IS NOT RESPONSIBLE FOR THE MAIN ELECTRICAL DISCONNECT.
- DAKTRONICS IS NOT RESPONSIBLE FOR THE MOUNTING HARDWARE OR THE INTEGRITY OF THE STRUCTURE THE DISPLAY IS MOUNTED TO.

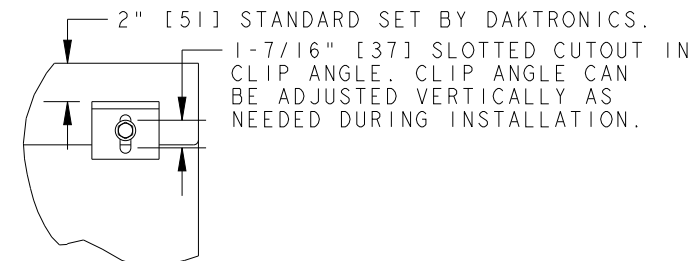
FRONT VIEW



L3X3X3/8" X3" WIDE ASTM A36 STEEL CLIP ANGLE FOR MOUNTING. ATTACHED TO DISPLAY WITH 1/2" BOLT AND NUT INSERT. SEE NOTE 2.



LEFT SIDE



DETAIL A SCALE 1/10

REAR VIEW

| REV | DATE | DESCRIPTION | BY |
|-----|-----------|---------------------------------------------------------------|-----|
| 02 | 02 AUG 11 | UPDATED DESIGN CODE TO INCLUDE IBC 2009 ALONG WITH IBC 2006 | AJR |
| 01 | 17 NOV 10 | UPDATED "SIGNAL IN" AND "SIGNAL OUT" QUICK CONNECT LOCATIONS. | JDG |

| | | | |
|------------------------------------|----------------|--------------------------------------------------------------------------------------------------------------------------------------------------------------------------------------------------------------------|------------------------|
| DAKTRONICS, INC. | | THE CONCEPTS EXPRESSED AND DETAILS SHOWN ON THIS DRAWING ARE CONFIDENTIAL AND PROPRIETARY. DO NOT REPRODUCE BY ANY MEANS WITHOUT THE EXPRESSED WRITTEN CONSENT OF DAKTRONICS, INC. COPYRIGHT 2011 DAKTRONICS, INC. | |
| BROOKINGS, SD 57006 | | DO NOT SCALE DRAWING | |
| PROJ: GALAXY AF-3500 34MM DISPLAYS | | | |
| TITLE: SHOP DWG, AF-3500-16X240-34 | | | |
| DESIGN: TWHITEH | DRAWN: RBJERKE | DATE: 02-AUG-11 | |
| SCALE: 1=60 | | | |
| SHEET: 1 OF 1 | REV: 02 | JOB NO: P 1472 | FUNC-TYPE-SIZE: E-10-B |
| | | | 1010787 |