

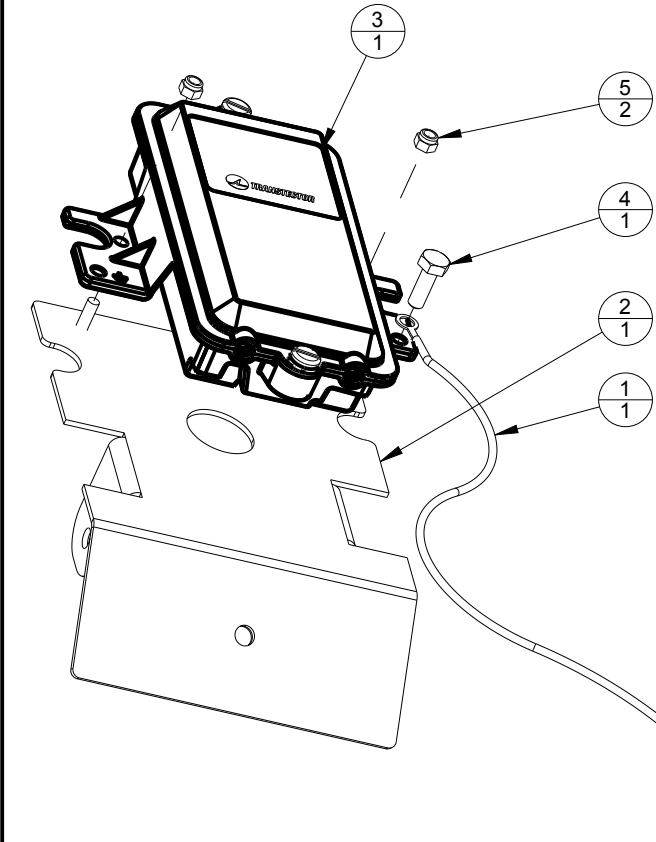
CABLE (NOT SHOWN)  
COMES OUT THIS HOLE.  
FEED THE CABLE DOWN  
THROUGH THE 1" HOLE  
IN THE BRACKET..

- 1
- INSERT THE FRONT OF THE  
CAMERA THROUGH THE LARGE HOLE.
- 2
- SECURE THE CAMERA TO THE  
BRACKET WITH #6 SCREWS  
AND NUTS.
- 3
- ONCE THE CAMERA IS  
ADJUSTED, TIGHTEN THE LOCKNUT  
AT THE BASE.

INDEX	NAME	QTY	DESCRIPTION
1	0M-3905078	1	D-LINK-DCS-4701E
2	A-4089979	1	D-LINK WEBCAM
3	HC-1196	3	MACH SCR, #6-32 X 0.625, PHIL PAN HD, BLK ZN PLTD
4	HC-1238	3	NUT, #6-32 HEX KEPS, ZN PLTD

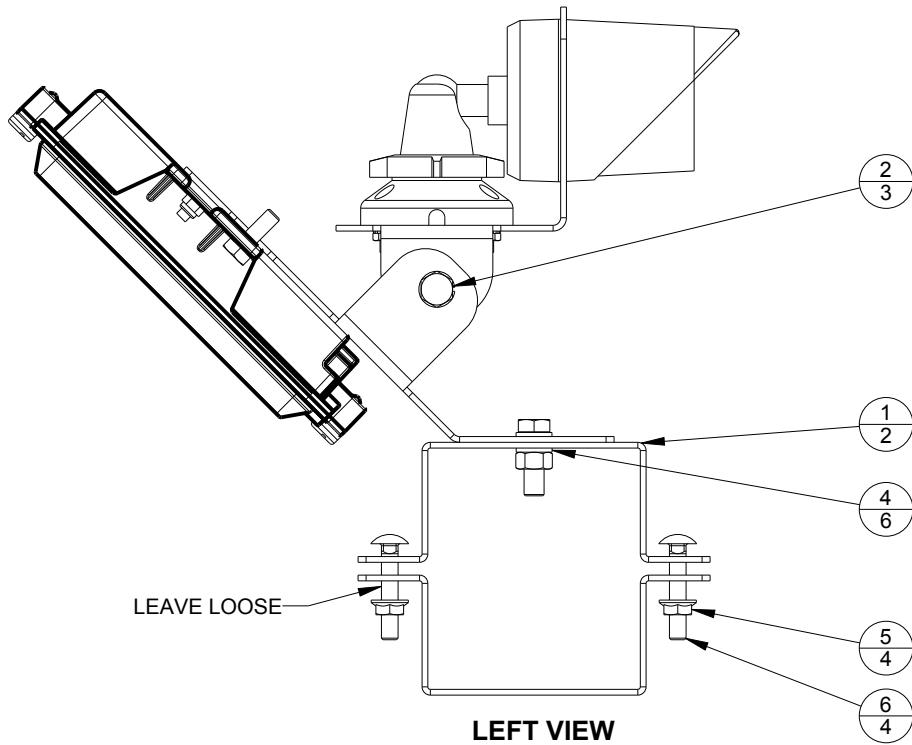
HARDWARE	TORQUE (IN-LBS)
HC-1062 (BOLT, 5/16-18 X 1.000, HEX HEAD, PLTD)	35 IN-LB
HC-1086 (NUT; 5/16-18 HEX, ZN PLTD, GRADE 2)	35 IN-LB
HC-1111 (NUT, 1/4-20 SERRATED FLANGE, ZN PLTD)	LEAVE LOOSE
HC-1423 (BOLT, 1/4-20X.750, HEX HEAD, 316 SS)	72 IN-LB
HC-1576 (BOLT, 1/4-20 X 1.500 CARRIAGE, GRADE 5, ZN PLTD)	LEAVE LOOSE
HC-1683 (NUT, #10-24 NYLON INSERT W/RIE 305 COATING, 316 SS)	25 IN-LB
HC-1238 (NUT, #6-32 HEX KEPS)	10 IN-LB

TORQUE TOLERANCE: ± 10%

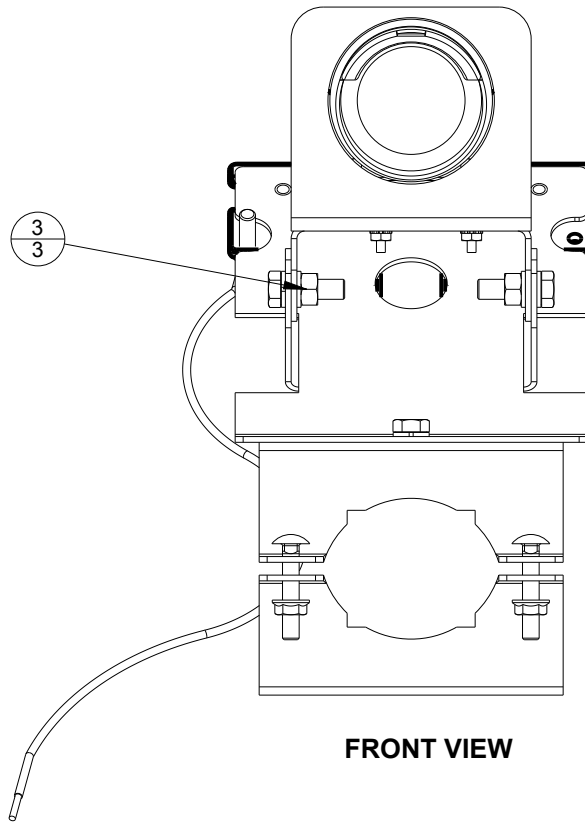


- 2
- MOUNT THE SURGE SUPPRESSOR TO THE STUDS IN THE  
SWIVEL BRACKET AND SECURE WITH #10 LOCK NUTS.
- ATTACH THE GRN/YEL WIRE TO THE HOLE IN THE  
SUPPRESSOR WITH THE 1/4" BOLT.

INDEX	NAME	QTY	DESCRIPTION
1	0A-1604-4569	1	HARNES; OPEN TO RING, 10AWG, GN/YL, 25'
2	0S-4109925	1	SWIVEL PLATE, D-LINK CAMERA
3	A-3159	1	SURGE PROTECTOR; WEBCAM, DB4200
4	HC-1423	1	BOLT, 1/4-20 X 0.750, HEX HEAD, 316 SS
5	HC-1683	2	NUT, #10-24 NYLON INSERT W/RIE 305 COATING, 316 SS



LEFT VIEW



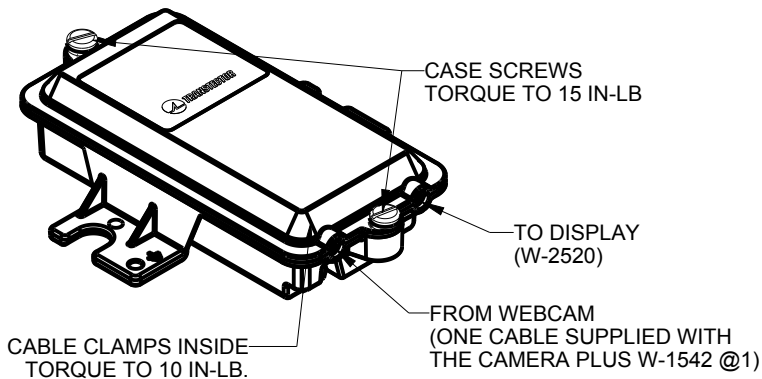
FRONT VIEW

- 3
- MOUNT THE CAMERA BRACKET TO THE SWIVEL BRACKET  
USING 5/16" BOLTS, WASHERS AND NUTS.
- ATTACH THE SWIVEL BRACKET TO ONE TUBE SADDLE  
WITH 5/16" HARDWARE.
- JOIN THE TUBE SADDLES WITH 1/4" BOLTS AND NUTS.  
LEAVE THESE NUTS LOOSE.

0A-2150-4601			
INDEX	NAME	QTY	DESCRIPTION
1	0M-1100506	2	WEBCAM MOUNT; TUBE SADDLE, DB4200
2	HC-1062	3	BOLT, 5/16-18 X 1.000, HEX HEAD, PLTD
3	HC-1086	3	NUT; 5/16-18 HEX, ZN PLTD, GRADE 2
4	HC-1099	6	WASHER; 5/16 SPLIT LOCK, ZN PLTD, MEDIUM
5	HC-1111	4	NUT, 1/4-20 SERRATED FLANGE, ZN PLTD
6	HC-1576	4	BOLT, 1/4-20 X 1.500 CARRIAGE, GRADE 5, ZN PLTD

WEBCAM  
ASSEMBLY  
LL-2978\_I

APPLY LABEL LL-2978\_I  
TO THE BUBBLE -WRAPPED  
PACKAGE OF THE WEBCAM



SURGE SUPPRESSOR WIRING

01	26 MAR 2019	PER CN-76105, ADDED HC-1099 @3.	AVB 116
REV	DATE:		BY:
<div><div></div><div>THE CONCEPTS EXPRESSED AND DETAILS SHOWN ON THIS DRAWING ARE CONFIDENTIAL AND PROPRIETARY. DO NOT REPRODUCE BY ANY MEANS WITHOUT THE EXPRESS WRITTEN CONSENT OF DAKTRONICS, INC. OR ITS WHOLLY OWNED SUBSIDIARIES. COPYRIGHT 2019 DAKTRONICS, INC. (USA)</div></div>			
PROJECT: GOLD BILLBOARD			
TITLE: D-LINK WEBCAM ASSEMBLY			
DATE: 26-MAR-19	DIM UNITS: INCHES [MILLIMETERS]	SHEET 1 OF 1	REV 01
SCALE: 1/3	DO NOT SCALE DRAWING		
DESIGN: A VANBEMMEL	JOB NO. P2150	FUNC - TYPE - SIZE E - 10 - B	4099307
DRAWN: A VANBEMMEL			