

SUBMITTAL APPROVAL

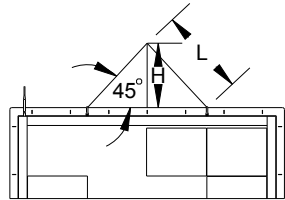
- ☐ APPROVED
☐ APPROVED AS NOTED
☐ APPROVED AS NOTED & RESUBMIT



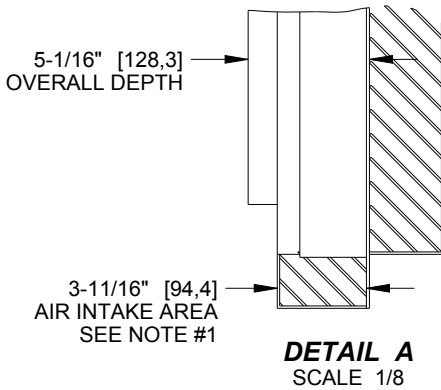
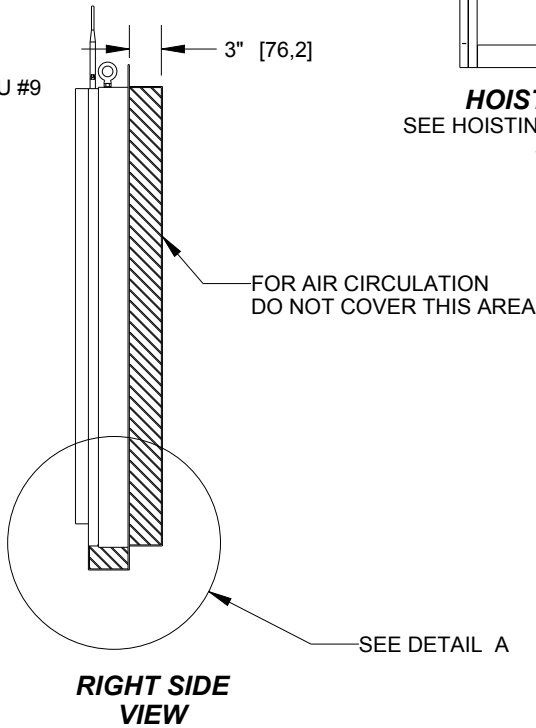
COMPANY: _____

SIGNED: _____

TITLE: _____ DATE: _____



HOISTING DIAGRAM
SEE HOISTING INFORMATION CHART
SCALE 1/50



#	DETAIL	DESCRIPTION
1	DISPLAY	ECCB-A100-48 X 80-19.8MM
2	LED COLOR	RED
3	ACTIVE AREA	3' 1-9/16" [953,5] X 5' 2-5/16" [1582,4]
4	OVERALL SIZE	3' 11-3/8" [1203,3] X 5' 11-1/2" [1816,1]
5	CABINET	ALUMINUM, PAINTED SEMI-GLOSS BLACK
6	VENTILATION	BOTTOM INTAKE & TOP-FRONT EXHAUST
7	ACCESS	FRONT ACCESS
8	WEIGHT	ESTIMATED UNCRATED WEIGHT PER FACE: 135 LB [61 KG]
9	SHIPPING	SHIPPED & INSTALLED AS SINGLE UNIT
10	DIMENSIONS	FEET AND INCHES [MILLIMETERS]

STRUCTURAL RATING

1	STRENGTH LEVEL DESIGN MAX WIND PRESSURE "P"	165 PSF
2	STANDARD/CODE	ASCE 7-10
3	THE DESIGN WIND PRESSURE WAS DEVELOPED USING THE FOLLOWING PARAMETERS.	
4	BUILDING CATEGORY	II
5	MAX WIND SPEED	175 MPH
6	EXPOSURE CATEGORY	C
7	MAX HEIGHT TO TOP OF DISPLAY	25 FT
8	TERRAIN CONDITIONS	FLAT

POWER RATINGS PER SINGLE FACE


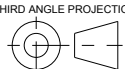
#	COLOR	WATTS	120VAC, 60HZ 2 WIRE, + GND	120/240VAC, 60HZ, 3 WIRE, +GND	
			LINE 1 (AMPS)	LINE 1 (AMPS)	LINE 2 (AMPS)
1	RED	264	2.200	NA	NA

INSTALL NOTES

- DISPLAY HAS INTAKE AT BOTTOM, EXHAUST AT THE TOP, AND VENTS ON THE BACK. DO NOT COVER THESE OPENINGS
- IN ORDER TO MAINTAIN THE STRUCTURAL INTEGRITY OF THE DISPLAY CABINET, BOTH EYEBOLTS MUST BE USED FOR LIFTING THE CABINET.
- 1/2" EYEBOLTS TO ASSIST WITH DISPLAY INSTALLATION. EYEBOLTS MAY BE REMOVED AFTER INSTALLATION.
- EYEBOLTS MAY NOT BE USED FOR PERMANENT INSTALLATION
- ALL MOUNTING LOCATIONS MUST BE USED WITH THE HARDWARE PROVIDED.
- DAKTRONICS IS NOT RESPONSIBLE FOR THE INTEGRITY OF THE STRUCTURE TO WHICH THE DISPLAY IS MOUNTED TO.
- DISPLAY IS DESIGNED TO BE MOUNTED TO A STRUCTURAL FRAME THAT CAN RANGE IN OPENING SIZE BETWEEN THE FOLLOWING DIMENSIONS: (H X W): (3' 7-7/8" - 3' 9-7/8") X (5' 6" - 5' 9")
IF THE FRAME OPENING IS TOO LARGE IN EITHER DIRECTION IT MUST BE UPDATED TO MEET THE SIZE RANGE.
- FOR UPDATES TO STRUCTURAL FRAME:
IF ALUMINUM IS USED 6063-T5 MUST BE USED.
MIN. MATERIAL THICKNESS OF ALUMINUM OR STEEL: 0.080".
MINIMUM MATERIAL THICKNESS IS REQUIRED TO MEET PULLOUT STRENGTH OF SUPPLIED TEK SCREWS.
- INSTALL SUPPLIED TEK SCREWS AT A DISTANCE OF 3/4" OR MORE FROM THE NEAREST EDGE OF EXISTING FRAME.
- SIGNAL OUTPUT QUICK CONNECT FOR MIRROR FACE.
- DAKTRONICS IS NOT RESPONSIBLE FOR THE MAIN ELECTRICAL DISCONNECT.

HOISTING INFORMATION

DISPLAY WIDTH (FT)	MINIMUM RIGGING HEIGHT, H, FOR 45° LINE ANGLE (IN)	MINIMUM CABLE LENGTH, L, FOR 45° LINE ANGLE (IN)
6	15	43

REV 02	DATE: 17 APR 2017	UPDATED UNCRATED DISPLAY WEIGHT		BY: DJO 18434	
		THE CONCEPTS EXPRESSED AND DETAILS SHOWN ON THIS DRAWING ARE CONFIDENTIAL AND PROPRIETARY. DO NOT REPRODUCE BY ANY MEANS WITHOUT THE EXPRESS WRITTEN CONSENT OF DAKTRONICS, INC. OR ITS WHOLLY OWNED SUBSIDIARIES. COPYRIGHT 2016 DAKTRONICS, INC. (USA)			
PROJECT: ECCB DISPLAYS					
TITLE: SHOP DWG, ECCB-A100-4FT X 6FT-19.8MM					
DATE: 17-APR-17		DIM UNITS: INCHES [MILLIMETERS]		SHEET	REV
SCALE: 1/18		DO NOT SCALE DRAWING		1 OF 1	02
DESIGN: TWHITEH		JOB NO.	FUNC - TYPE - SIZE	1177034	
DRAWN: TWAIT		P1676	E - 10 - B		