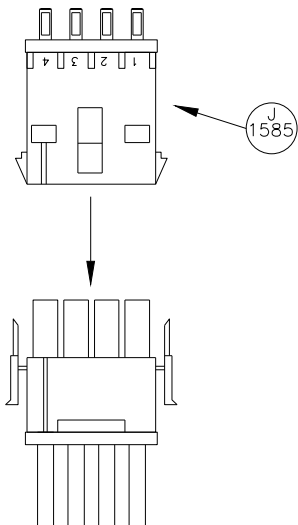


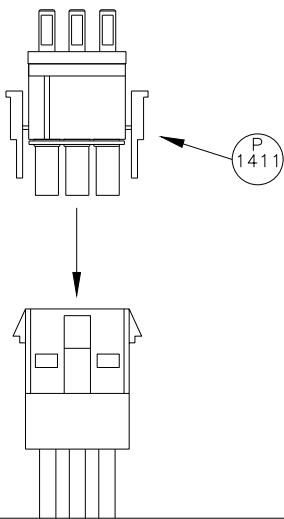
3FT X 8FT ECCB DISPLAY

DETAIL: C

SEE NOTES IN DETAIL A



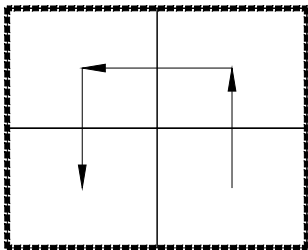
DETAIL: B



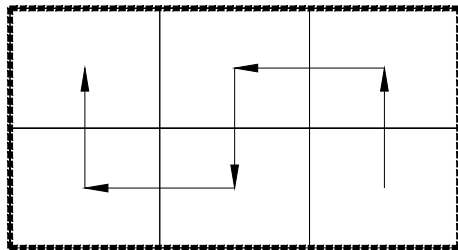
DETAIL: A

NOTE: EXAMPLES BELOW SHOW MODULE/POWER SUPPLY GROUPINGS AND POWER HARNESS ROUTING USED IN 3FT X 8FT DISPLAY SIZE. REFER TO LAYOUT ABOVE FOR POWER SUPPLY LOCATION WITHIN GROUPING. USE W-2704 TO POWER 6 MODULES. ON POWER SUPPLY IN THE SECOND COLUMN OF THE PRIMARY FACE, CONNECT W-2950 TO THE FIRST PLUG ON W-2704. ROUTE W-2950 TO PROVIDE POWER TO THE CONTROLLER AND PICOSTATION. USE J-1585 TO SEAL ANY OPEN CONNECTORS, SEE DETAIL C.

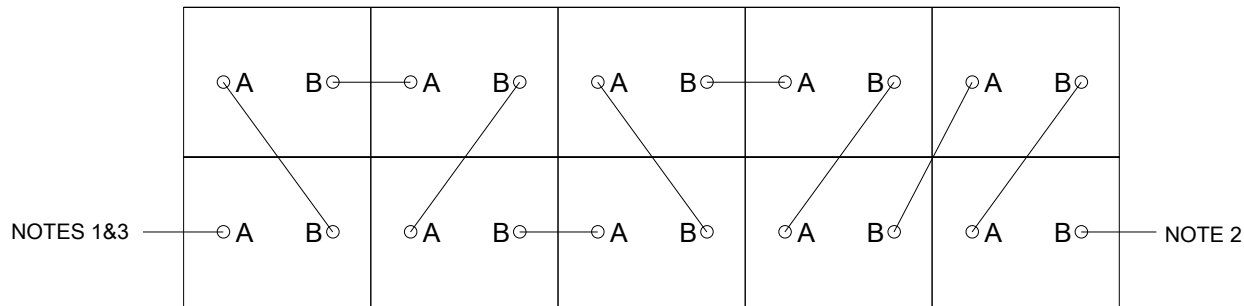
PRIMARY: W-2704, & J-1585 (1)  
MIRROR: W-2704 & J-1585 (2)



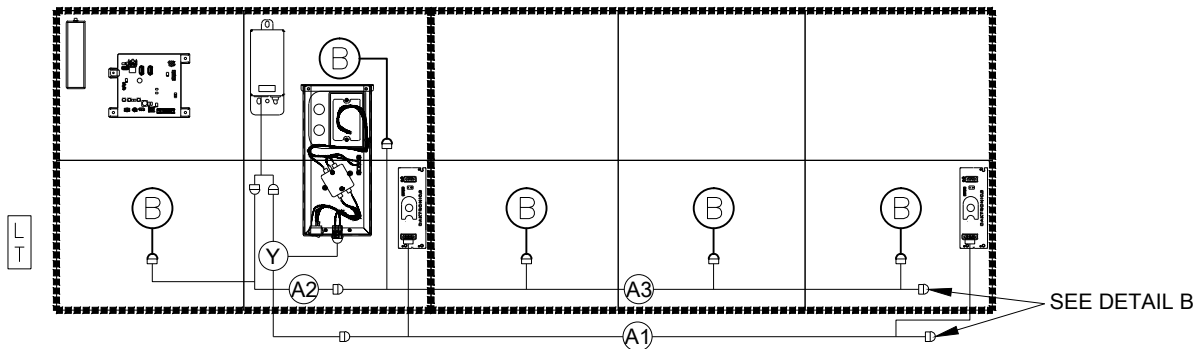
W-2704



SATA ROUTING



COMPONENT LAYOUT AND AC WIRING



NOTES










1. PRIMARY FACE - CONNECT W-2885 SATA CABLE TO CONTROLLER
2. PRIMARY FACE (2V ONLY) - CONNECT W-2891 SATA CABLE, COIL INSIDE CABINET NEAR INTERCONNECT HOLE
3. MIRROR FACE - CONNECT W-2885 SATA CABLE, COIL INSIDE CABINET NEAR INTERCONNECT HOLE TO BE CONNECTED TO W-2891 FROM NOTE 2 FOR SIGNAL TO MIRROR FACE
4. W-2885 FOR ALL OTHER SATA CABLES
5. 2V ONLY - FOR TESTING UNCOIL W-2891 IN PRIMARY FACE AND CONNECT W-2885 FROM NOTE 3 ON MIRROR FACE
6. DISPLAYS ARE 2.5X SCALE
7. PICOSTATION, CONTROLLER, AND LIGHT SENSOR ARE IN PRIMARY FACE ONLY. USE LIGHT SENSOR COVER 0A-1327-3014 ON ALL MIRROR DISPLAYS.

□ FEMALE END ◻ MALE END

HARNESS PART NUMBER

A1	W-2713 AC 2 PS
A2	W-2711 1 FAN AC POWER
A3	W-2710 4 FAN AC POWER
Y	W-2703 AC Y HARNESS


PART ASSEMBLIES

CONTROLLER		0A-1603-2100
POWER SUPPLY		A-3143
POWER TERM PANEL		0A-1327-0157
AC FAN		B-1102
MODULE		SEE BOM
THERMASTAT		A-3459
LIGHT DETECTOR		0A-1327-3020 MIRROR FACE 0A-1327-3014
PICOSTATION		A-3458
3 PIN SEALING PLUG		P-1411

POWER SPECIFICATION

MATRIX GRID	MATRIX SIZE	MAX WATTS	120VAC LINE 1 AMPS
2X5	32X100	274.11	2.28

EXAMPLE PRODUCT IDENTIFICATION LABEL




**ASSY NO.** 0A-1676-\*\*\*\*  
**SER. NO.** (NEXT ASSIGNED #)  
**MFG DATE** (TODAY'S DATE MM/DD/YY) REV XX  
**DAKTRONICS, INC.**  
331 32ND AVE.  
P.O. BOX 5128  
BROOKINGS, SD 57006  
PHONE 1-605-697-4000

ECCB-A100-3FTX8FT-20-R-(SF/2V)  
RMN: DAKT-0207-01  
120VAC, 1PH, 60HZ  
AMPS PER LINE = 2.28  
MAX WATTS = 274.11

LL-2306

REV 04	DATE: 09 MAY 16	PER EC-21230: UPDATED NOTES 2 AND 5 (2V ONLY)	BY: DJO
REV 03	DATE: 03 MAR 16	PER EC-20054: REPLACED W-2597 WITH W-2891	BY: BJK
REV 02	DATE: 02 APR 15	UPDATED NOTES IN DETAIL A PER EC-17511	BY: JLL

 <b>DAKTRONICS, INC.</b> BROOKINGS, SD 57006 DO NOT SCALE DRAWING				THE CONCEPTS EXPRESSED AND DETAILS SHOWN ON THIS DRAWING ARE CONFIDENTIAL AND PROPRIETARY. DO NOT REPRODUCE BY ANY MEANS WITHOUT THE EXPRESSED WRITTEN CONSENT OF DAKTRONICS, INC. COPYRIGHT 2013 DAKTRONICS, INC.			
PROJ: ECCB							
TITLE: ELECT LAYOUT; ECCB-A100-3FTX8FT-20-R-SF/2V							
DESIGN: JLAIRD				DRAWN: JLAIRD		DATE:	
SCALE: 1=40							
SHEET	REV	JOB NO:	FUNC - TYPE - SIZE	1150649			
	04	P1676	E - 01 - B				