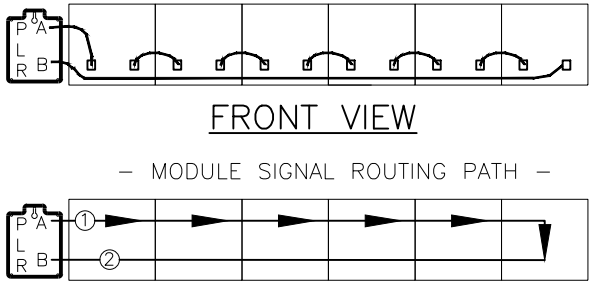
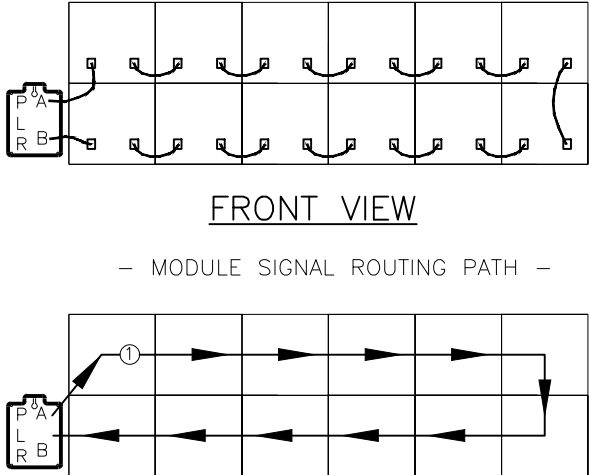


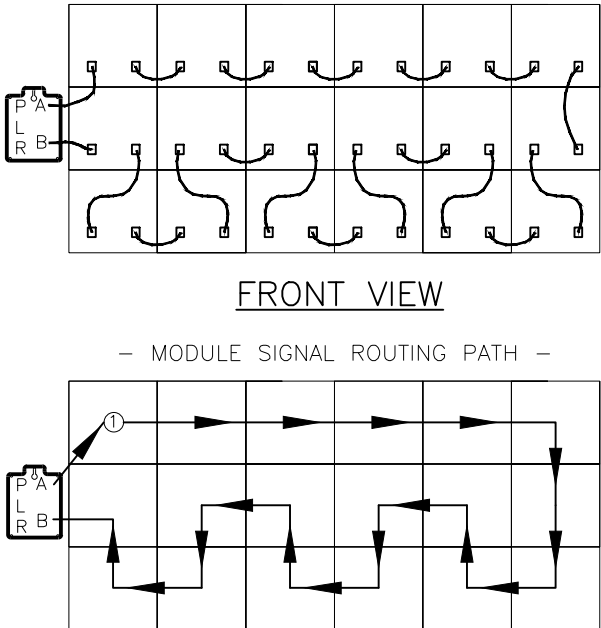
1 HIGH DISPLAYS
(# OF MODS WIDE DOES NOT MATTER)
- PHYSICAL SATA CABLE CONNECTIONS -



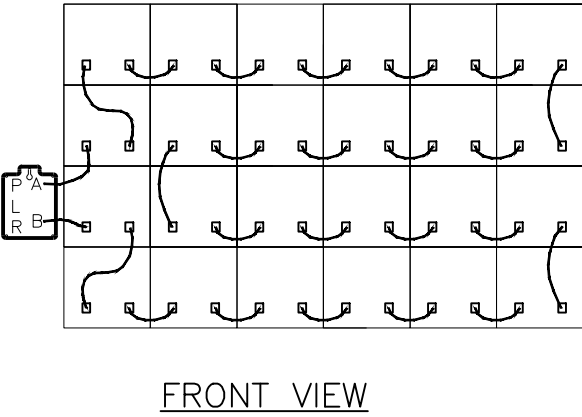
2 HIGH DISPLAYS
(# OF MODS WIDE DOES NOT MATTER)
- PHYSICAL SATA CABLE CONNECTIONS -



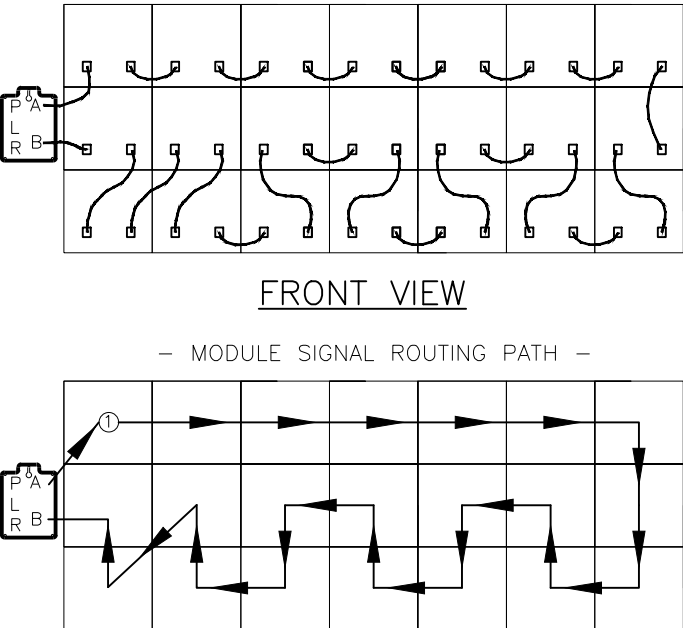
3 HIGH DISPLAYS
W/ EVEN # OF MODS WIDE
- PHYSICAL SATA CABLE CONNECTIONS -



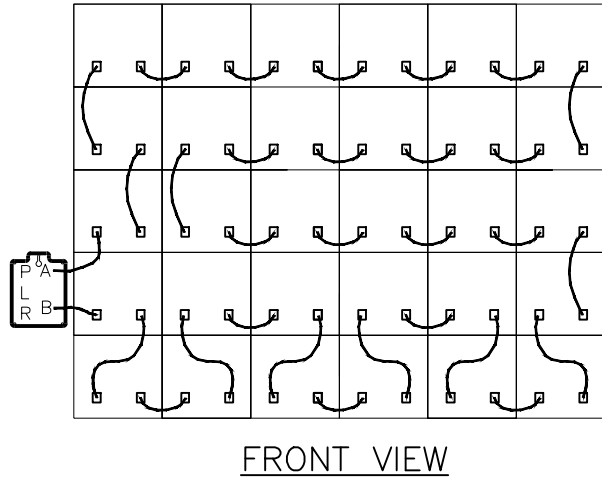
4 HIGH DISPLAYS
(# OF MODS WIDE DOES NOT MATTER)
- PHYSICAL SATA CABLE CONNECTIONS -



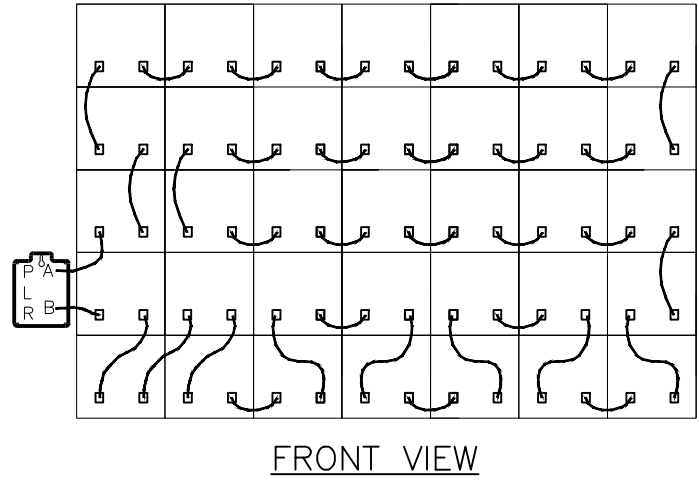
3 HIGH DISPLAYS
W/ ODD # OF MODS WIDE
- PHYSICAL SATA CABLE CONNECTIONS -



5 HIGH DISPLAYS
W/ EVEN # OF MODS WIDE
- PHYSICAL SATA CABLE CONNECTIONS -



5 HIGH DISPLAYS
W/ ODD # OF MODS WIDE
- PHYSICAL SATA CABLE CONNECTIONS -



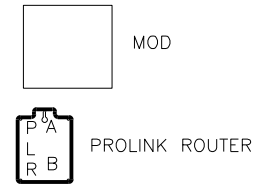
-ACTUAL DISPLAY
SIZES MAY DIFFER.-

DISPLAY SIZES SHOWN
REPRESENT THE POSSIBLE
ROUTINGS OF SATA
CABLE/SIGNAL PATH

THE PLR LOCATION SHOWN
IS FOR SIGNAL ROUTING
ONLY. ACTUAL DISPLAY
LOCATION VARIES.


SATA CONNECTOR "A" ON
THE PLR MUST GO TO THE
FIRST MOD IN THE SIGNAL
PATH. SATA CONNECTORS "A"
AND "B" ARE
INTERCHANGEABLE ON THE
MODS.

LEGEND



- ① W-2410 SATA CABLE 28"
- ② FOR DISPLAY LENGTHS 3-9
MODS USE W-2412. FOR
DISPLAY LENGTHS 10-20 USE
W-2387.
- (W-2412 SATA CABLE 12FT)
- (W-2387 SATA CABLE 30FT)



		DAKTRONICS, INC.		THE CONCEPTS EXPRESSED AND DETAILS SHOWN ON THIS DRAWING ARE CONFIDENTIAL AND PROPRIETARY. DO NOT REPRODUCE BY ANY MEANS WITHOUT THE EXPRESSED WRITTEN CONSENT OF DAKTRONICS, INC. COPYRIGHT 2012 DAKTRONICS, INC.	
		BROOKINGS, SD 57006			
DO NOT SCALE DRAWING					
PROJ: GP4					
TITLE: BLOCK DIAGRAM; SMALL MATRIX, GP4 SATA ROUTING					
DESIGN: JGOLDAD			DRAWN: JGOLDAD		DATE: 15 OCT 12
SCALE: NTS					
SHEET	REV	JOB NO:	FUNC - TYPE - SIZE	1116128	
1 OF 1	00	P 1630	R - 01 - B		