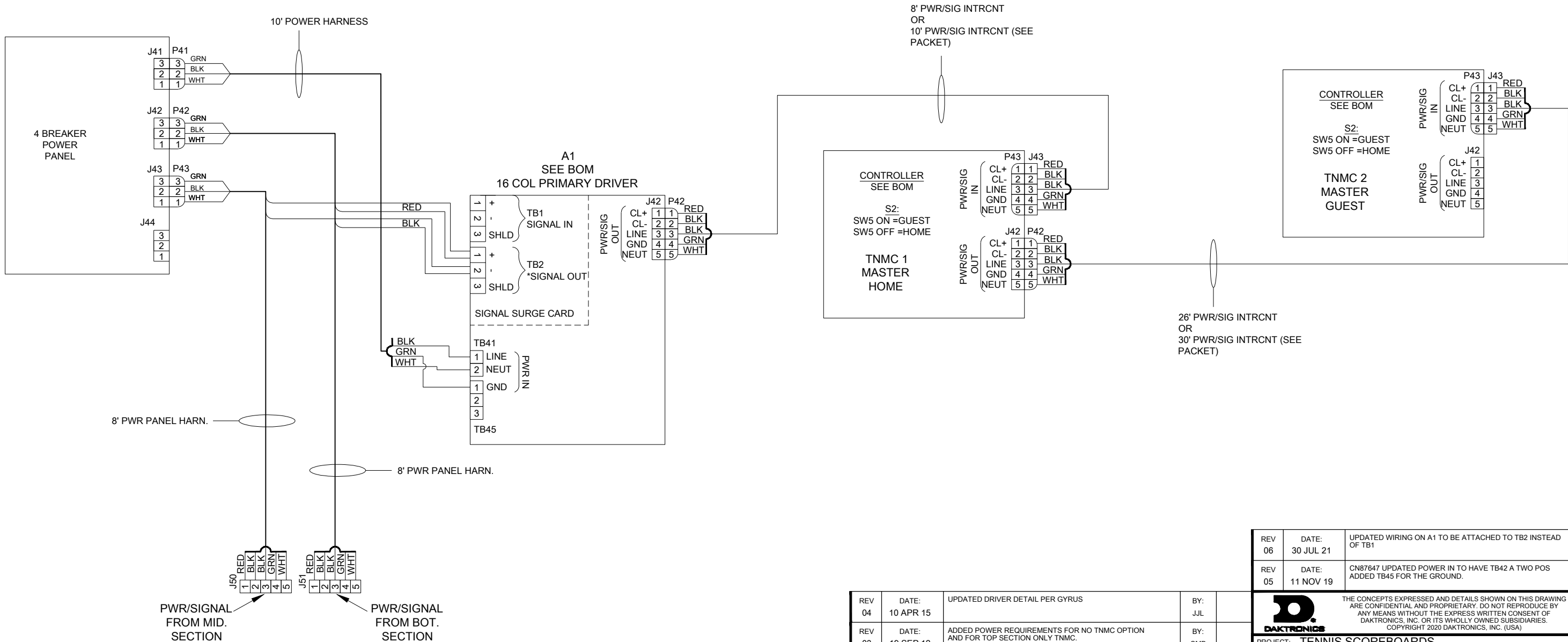


NOTES

- 1) SEE HARNESS STAGE OR FINAL ASSEMBLY DRAWING FOR HARNESS AND COMPONENT PART NUMBERS.
- 2) SEE PWR/ADDRESS DWG LISTED IN ASSEMBLY FOR POWER AND ADDRESS SPECS
- 3) SEE COMPONENT LOCATION DWG AND HARNESS STAGE DWG FOR ACTUAL LOCATION OF COMPONENTS
- * IF FIBER INPUT, USE J2 ON FIBER CARD FOR SIGNAL IN



REV 06	DATE: 30 JUL 21	UPDATED WIRING ON A1 TO BE ATTACHED TO TB2 INSTEAD OF TB1	BY: MRL
REV 05	DATE: 11 NOV 19	CN87647 UPDATED POWER IN TO HAVE TB42 A TWO POS ADDED TB45 FOR THE GROUND.	BY: JSF
<div><div>DAKTRONICS</div><div>THE CONCEPTS EXPRESSED AND DETAILS SHOWN ON THIS DRAWING ARE CONFIDENTIAL AND PROPRIETARY. DO NOT REPRODUCE BY ANY MEANS WITHOUT THE EXPRESS WRITTEN CONSENT OF DAKTRONICS, INC. OR ITS WHOLLY OWNED SUBSIDIARIES. COPYRIGHT 2020 DAKTRONICS, INC. (USA)</div></div>			
PROJECT: TENNIS SCOREBOARDS			
TITLE: SCHEMATIC; THREE/SIX SECTION TENNIS, TOP SECTION			
DATE: 27 NOV 11	DIM UNITS: INCHES [MILLIMETERS]	SHEET	REV 06
SCALE: NONE	DO NOT SCALE DRAWING		
DESIGN: MMILLER	JOB NO. P1164	FUNC - TYPE - SIZE R - 03 - B	1076663
DRAWN: SBRINK			