

Shot Clocks & Small Scoreboards

Refer to **DWG-141025** during assembly and installation.

1. Attach the mounting angles to the top and bottom of the display using the short screws.
2. Attach screen extension tubes to angles with longer screws.
3. Lift the screen into place and secure between the tubes with the 1/2" diameter pins provided.
4. Insert the spring clips into the end of the mounting tube, through the hole near the head of the pin.

Tuff Sport® Scoreboards & Statistic Displays

Refer to **DWG-150635** during assembly and installation.

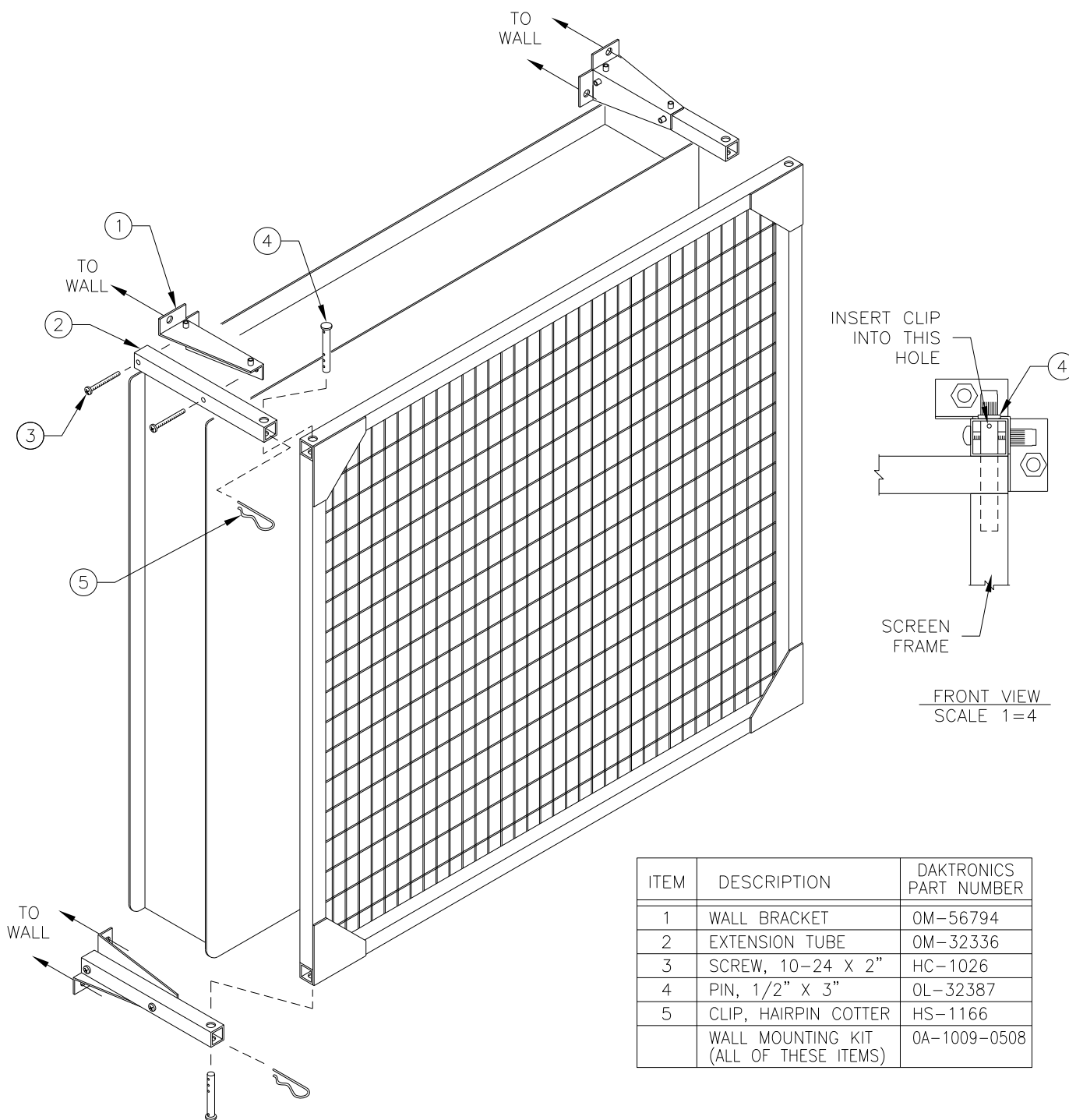
1. Attach angle brackets to the scoreboard using the short screws through the holes in the scoreboard frame and threaded into the brackets.
2. Insert the long screws through the extension tubes and attach to the brackets.
3. Position the screen between the extension tubes and insert the pins through the 1/2" holes in the extension tubes and into the 1/2" holes in the top and bottom of the screen frame.
4. Secure the pins with the hair pin cotters, inserted through the front of the extension tubes.
5. If wires are to be routed through the large hole in the bracket, install a 1.5" bushing in the hole before inserting wires.

Wall Mounting

Refer to **DWG-56802** during assembly and installation.

1. Attach wall mounting brackets to wall as required to fit protective screen.
2. Attach extension tubes to wall mounting brackets.
3. Fit screen between extension tubes and insert pins through holes in extension tubes and protective screen frame.
4. Secure pins inserted into the protective screen frame, with clips, engaging the hole near the head of the pin.

Note: To gain access to the scoreboard for service, remove the pins from one side and swing the screen out, pivoting on the pins on the other side.



ITEM	DESCRIPTION	DAKTRONICS PART NUMBER
1	WALL BRACKET	OM-56794
2	EXTENSION TUBE	OM-32336
3	SCREW, 10-24 X 2"	HC-1026
4	PIN, 1/2" X 3"	OL-32387
5	CLIP, HAIRPIN COTTER	HS-1166
	WALL MOUNTING KIT (ALL OF THESE ITEMS)	0A-1009-0508

PROCEDURE:

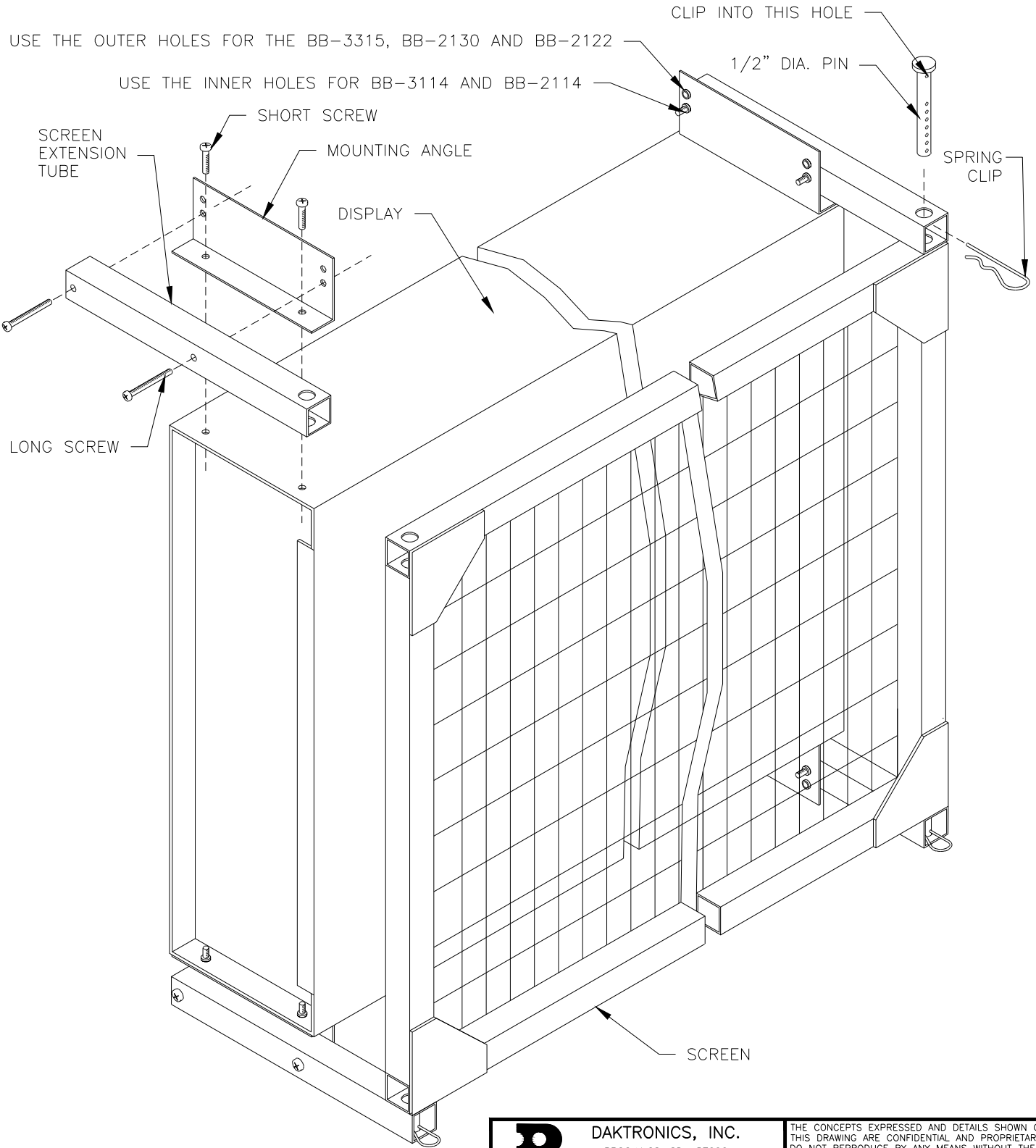
1. ATTACH THE BRACKETS TO THE WALL, USING HARDWARE SUITABLE FOR THE WALL MATERIAL. BE SURE THAT THE METHOD USED IS ADEQUATE TO SAFELY SUPPORT THE SCREEN. BE SURE THE BRACKETS ARE ORIENTED CORRECTLY AS SHOWN FOR EACH CORNER.
2. MOUNT THE EXTENSION TUBES TO THE BRACKETS USING SCREWS, FROM THE INSIDE OF EACH BRACKET.
3. POSITION THE SCREEN BETWEEN THE EXTENSION TUBES AND INSERT THE PINS THROUGH THE EXTENSION TUBES INTO THE HOLES IN THE SCREEN FRAME. SECURE THE PINS WITH CLIPS, INSERTING THE CLIP INTO THE HOLE NEAREST THE HEAD OF THE PIN.


THE CONCEPTS EXPRESSED AND DETAILS SHOWN ON THIS DRAWING ARE CONFIDENTIAL AND PROPRIETARY. DO NOT REPRODUCE BY ANY MEANS, INCLUDING ELECTRONICALLY WITHOUT THE EXPRESSED WRITTEN CONSENT OF DAKTRONICS, INC. COPYRIGHT 2010 DAKTRONICS, INC.				
DAKTRONICS, INC. BROOKINGS, SD 57006				
PROJ: BASKETBALL SCOREBOARDS TITLE: PROTECTIVE SCREEN WALL MOUNTING				
DES. BY:		DRAWN BY: C FICKBOHM		DATE: 21 MAY 93
REVISION	02	APPR. BY:	1009-R10A-56802	
		SCALE:	1=10	

02	13 MAY 10	REMOVED HS-1064 @8, UPDATED TO SHOW HS-1270 NUTSERTS, UPDATED PROCEDURE TEXT FOR STEP 2. PER ECO-68380.	SAG	
1	01 FEB 00	ADDED PART NUMBER TABLE AND FRONT VIEWS	AVB	
REV.	DATE	DESCRIPTION	BY	APPR.

PROCEDURE:

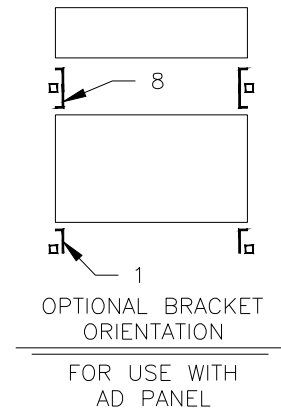
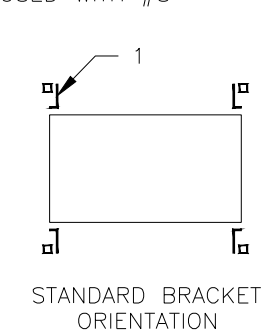
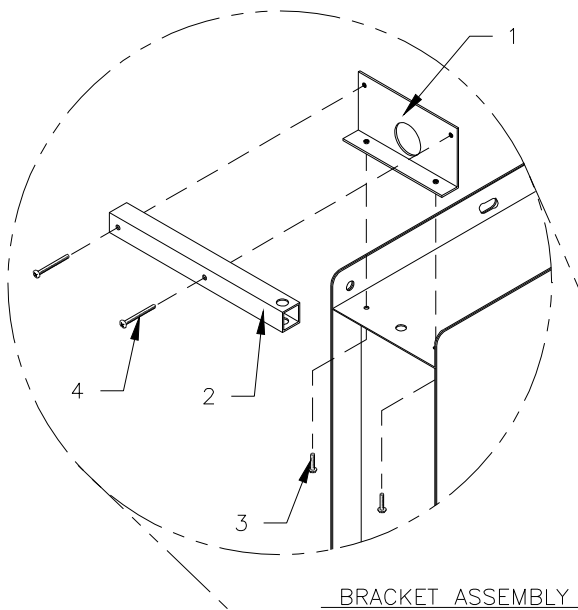
1. ATTACH THE MOUNTING ANGLES TO THE TOP AND BOTTOM OF THE DISPLAY USING THE SHORT SCREWS.
2. ATTACH SCREEN EXTENSION TUBES TO ANGLES WITH LONGER SCREWS. NOTE THE HOLES USED FOR YOUR DISPLAY.
3. LIFT THE SCREEN INTO PLACE AND SECURE BETWEEN THE TUBES WITH THE 1/2" DIAMETER PINS PROVIDED.
4. INSERT THE SPRING CLIPS INTO THE END OF THE MOUNTING TUBE, THROUGH THE HOLE NEAR THE HEAD OF THE PIN.



 DAKTRONICS, INC. BROOKINGS, SD 57006		THE CONCEPTS EXPRESSED AND DETAILS SHOWN ON THIS DRAWING ARE CONFIDENTIAL AND PROPRIETARY. DO NOT REPRODUCE BY ANY MEANS WITHOUT THE EXPRESSED WRITTEN CONSENT OF DAKTRONICS, INC. COPYRIGHT 2010 DAKTRONICS, INC.			
DO NOT SCALE DRAWING					
PROJ:STANDARD INDOOR LED SCOREBOARDS					
TITLE:SCREEN MOUNTING— SHOT CLOCKS AND SMALL SCBDS					
DESIGN:BPETERSON		DRAWN:BPETERSON		DATE: 13NOV00	
SCALE: 1=5					
SHEET		REV	JOB NO:	FUNC-TYPE-SIZE	141025
		02	P1152	R-10-A	

REV 02	DATE: 15 SEP 10	REPLACED BB-2015, BB-2115, BB-2039, AND BB-2014 W/ BB-3115, BB-2130, BB-2122, AND BB-3114	BY: KDD
REV 01	DATE: 07FEB02	UPDATED MODEL REFERENCES	BY: BDP

DESCRIPTION	PART NUMBER	QTY
1. ANGLE BRACKET	OS-1237-0059	4 OR 2 IF USED WITH #8
2. EXTENSION TUBE	OM-32336	4
3. SCREW, 10-24x5/8	HC-1470	8
4. SCREW, 10-24x1.75	HC-1471	8
5. PIN, 1/2 X 3	HS-1065	4
6. HAIR PIN COTTER	HS-1066	4
7. BUSHING, 1.5 Ø	HE-1249	2
8. OPTIONAL BRACKET	OS-1237-0203	2



PROCEDURE:
1. ATTACH ALL 4 ANGLE BRACKETS TO THE SCOREBOARD USING THE SHORT SCREWS THROUGH THE HOLES IN THE SCOREBOARD FRAME AND THREADED INTO THE BRACKETS, AS SHOWN AT LEFT.

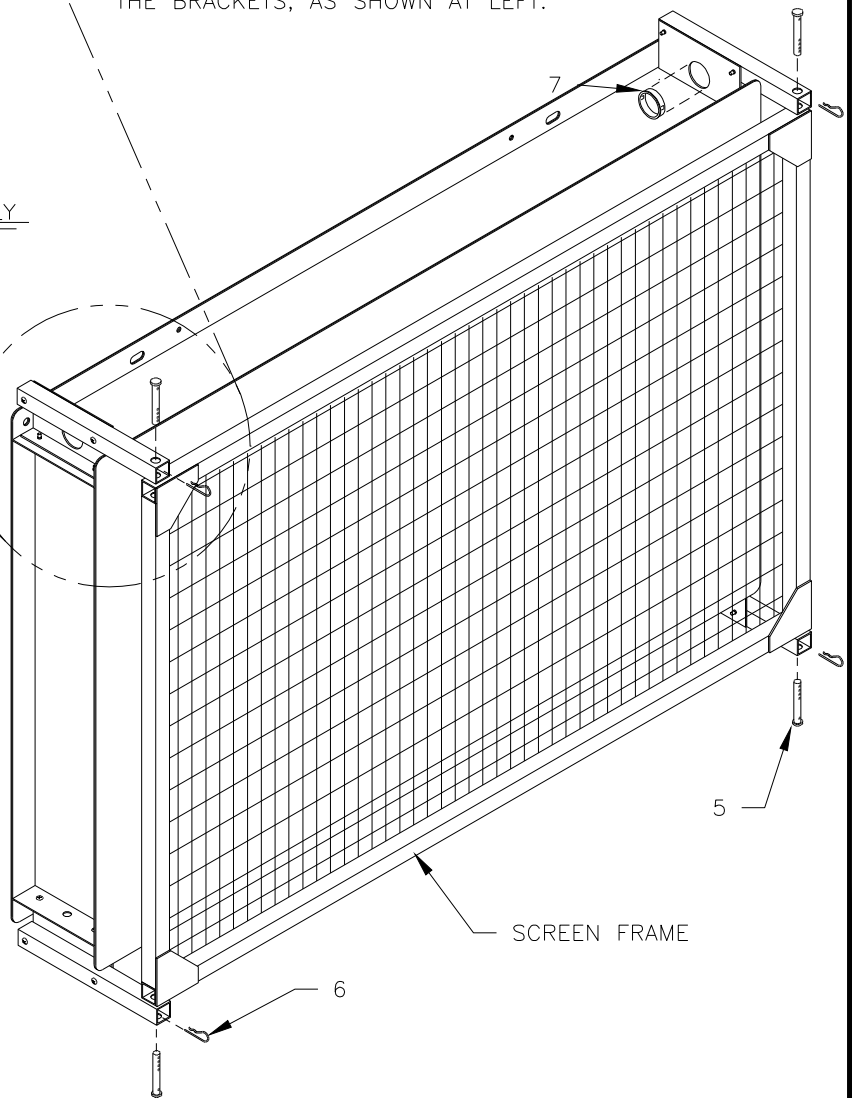
PROCEDURE, CONTINUED


2. INSERT THE LONG SCREWS THROUGH THE EXTENSION TUBES AND ATTACH TO THE BRACKETS AS SHOWN ABOVE.

3. POSITION THE SCREEN BETWEEN THE EXTENSION TUBES AND INSERT THE PINS THROUGH THE 1/2" HOLES IN THE EXTENSION TUBES AND INTO THE 1/2" HOLES IN THE TOP AND BOTTOM OF THE SCREEN FRAME.

4. SECURE THE PINS WITH THE HAIR PIN COTTERS, INSERTED THROUGH THE FRONT OF THE EXTENSION TUBES.

5. IF WIRES ARE TO BE ROUTED THROUGH THE LARGE HOLE IN THE BRACKET, INSTALL A 1.5" BUSHING IN THE HOLE BEFORE INSERTING WIRES.



 DAKTRONICS, INC. BROOKINGS, SD 57006		THE CONCEPTS EXPRESSED AND DETAILS SHOWN ON THIS DRAWING ARE CONFIDENTIAL AND PROPRIETARY. DO NOT REPRODUCE BY ANY MEANS WITHOUT THE EXPRESSED WRITTEN CONSENT OF DAKTRONICS, INC. COPYRIGHT 2011 DAKTRONICS, INC.	
DO NOT SCALE DRAWING			
PROJ: TUFF SPORT SCOREBOARDS			
TITLE: INSTALLATION- PROTECTIVE SCREEN			
DESIGN: AVB		DRAWN: A VANBEMMEL	DATE: 18 JUN 01
SCALE: 1 = 12			
SHEET	REV	JOB NO:	FUNC-TYPE-SIZE
	03	P1237	R-10-A
			150635

REV 03	DATE: 24 AUG 11	REPLACED PART NUMBER OL-32387 WITH HS-1065	BY: LMG
REV 02	DATE: 07 AUG 02	ADDED OPTIONAL BRACKET.	BY: ALG
REV 01	DATE: 07FEB02	UPDATED PROCEDURE	BY: BDP