

Galaxy GS6 Display Internal Connection Conversion Quick Guide

Use this procedure to convert the external J-box and quick-connect plates on a Galaxy® GS6 display to internal locations. Complete these steps when mounting GS6 displays flush on a building or structure or when two displays are mounted back-to-back in a closer configuration than the standard back-to-back mounting kit allows.

Required Tools

- Hex Head Wrench
- Channel Lock or $\frac{7}{16}$ " socket
- Phillips Head Screw Driver

Moving the Quick Connect Plates

1. Remove two bottom-left modules to access the Primary display input quick-connect plate.
2. Remove two bottom-right modules to access the mirror input/output quick-connect plate.
3. Remove the three screws that hold the quick-connect plate to display backsheet. Save the screws for reuse.

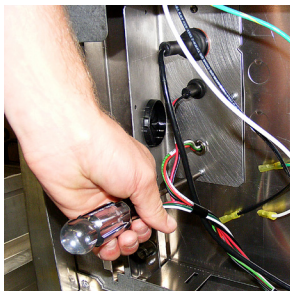


Figure 1: Primary Input Quick-Connect Plate

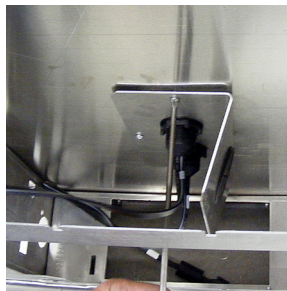


Figure 2: Mirror Input/Output Quick-Connect Plate

4. Remove the black grommet from the quick-connect plate.

5. Rotate the quick-connect plate on the backsheet so the quick connects are located inside the cabinet.

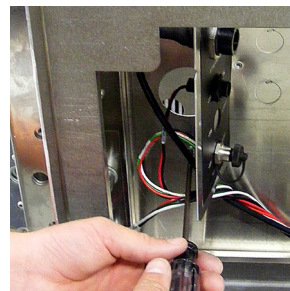


Figure 3: Input Quick-Connect Plate Inside Cabinet

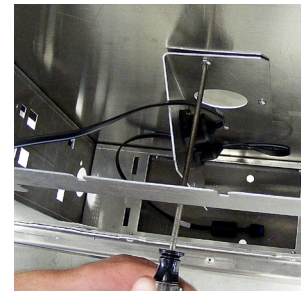
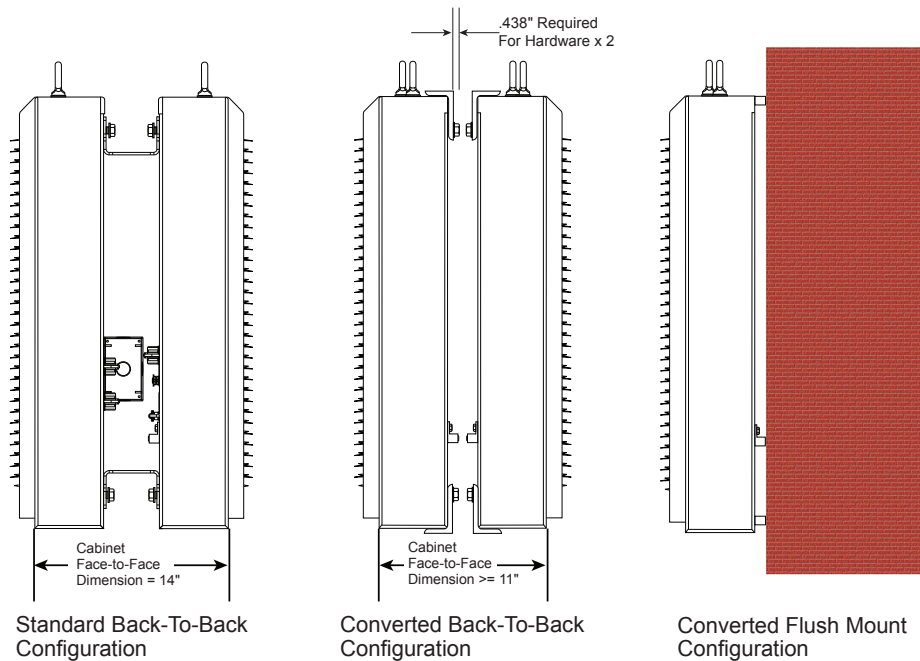
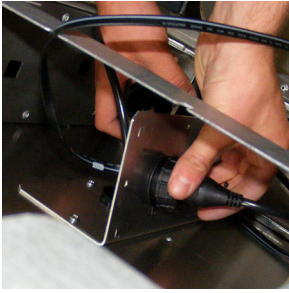


Figure 4: Mirror Input/Output Quick-Connect Plate Inside Cabinet

6. Secure the plate with the screws removed in Step 3.
7. Thread the cables through grommet and into cabinet.
8. Snap the grommet in place on outside of display's backsheet.



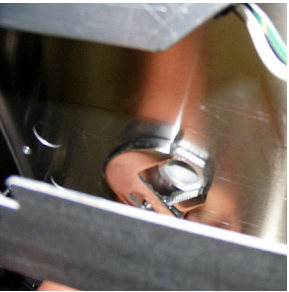
9. Connect the cables to the jacks on the quick-connect plate.



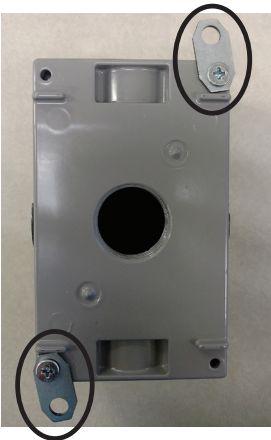
Reinstall Modules

Move the J-Box to Display's Interior

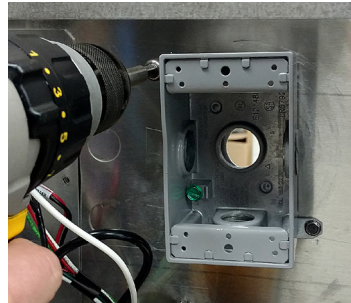
1. Remove two bottom-left modules to access the J-box location.
2. Pull wires from J-box into display cabinet.
3. Use a channel lock or socket wrench to loosen the nut holding the J-box in place.



4. Attach the metal tabs found inside the J-box to the corners of the J-box. Find the screws needed to attach the tabs also inside the J-box.



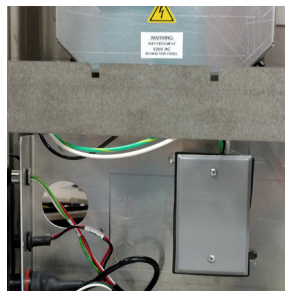
5. Place the J-box inside the display making sure to align it with the existing J-box hole on the display's backsheet.
6. Use 1/4" Tek screws (screws not provided) to secure the J-box inside the display on the backsheet.



7. Route electrical wires from the term panel to the J-box.
8. Attach 3/4" conduit to the back of the J-box.
9. Or seal the hole using one of the plugs found on the J-box so no water can enter the J-box and attach 1/2" conduit to one of the knockouts on the back of the display. Inside the cabinet, route wires from the knockout into the J-box for termination.



10. Attach J-box cover.



Reinstall Modules