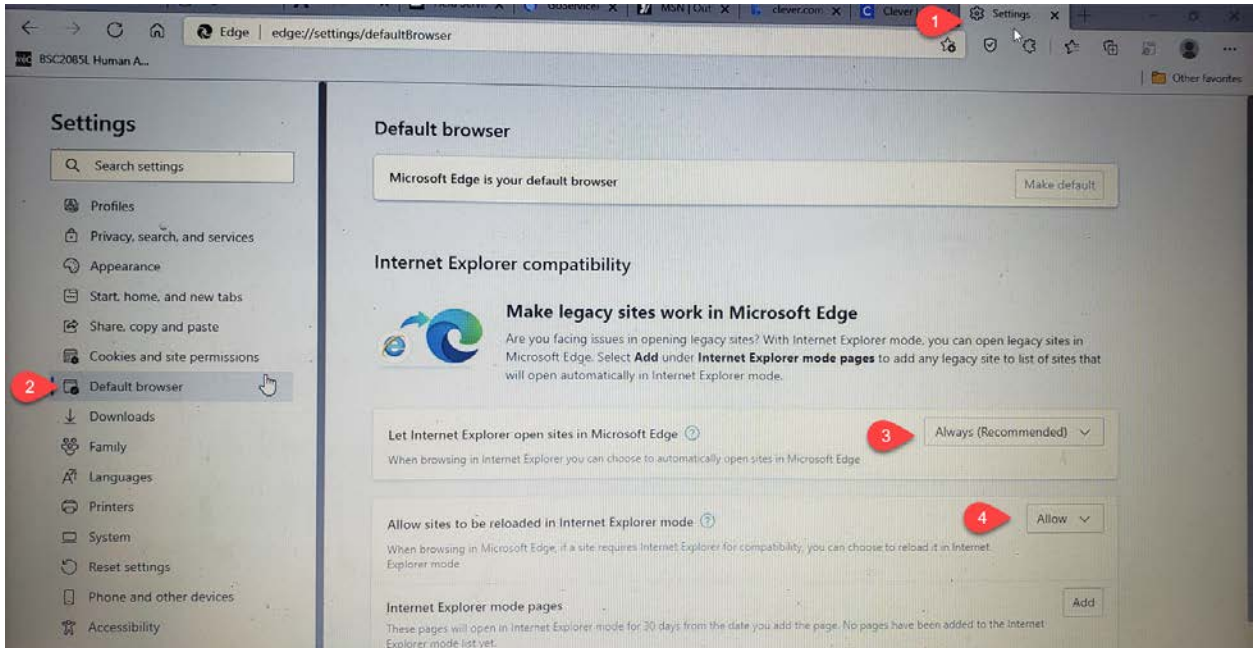


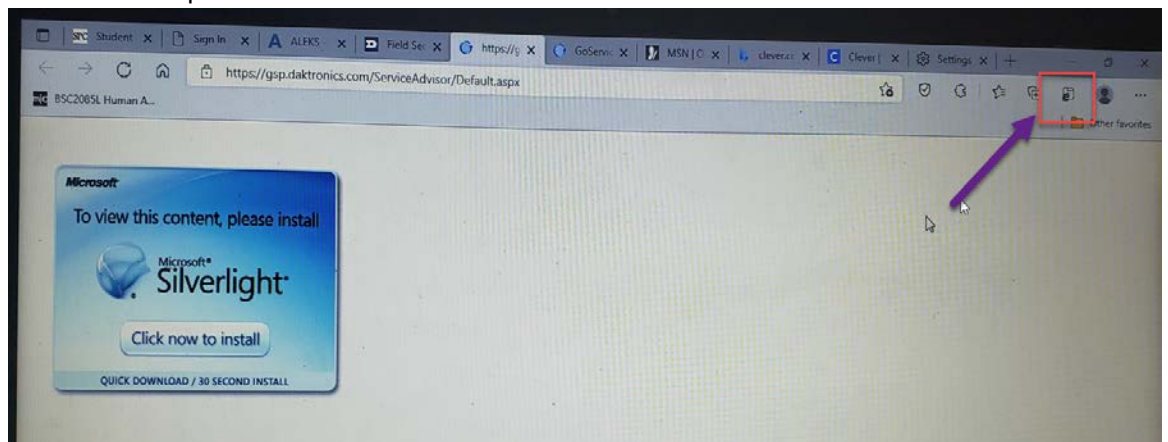
How To Access GSP using Microsoft Edge

NOTE: If your computer does NOT have Silverlight currently installed. [Click here to download](#)

1. From Microsoft Edge - Open Settings
2. Click Default browser
3. Update Let Internet Explorer open sites in Microsoft Edge to **Always (Recommended)**
4. Update Allow sites to be reloaded in Internet Explorer mode to **Allow**

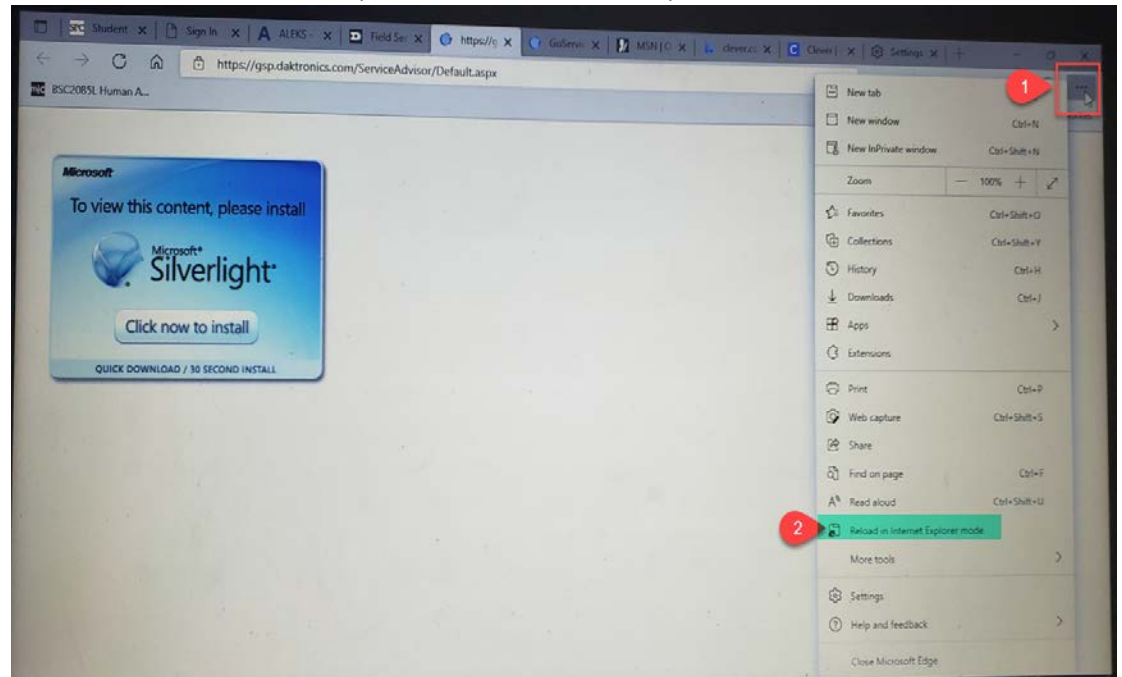


5. Click on Log In to GoServicePro from the [Field Service Portal](#) – will prompt you to install Silverlight – Do not click link.
 - a. Click on envelop with “e” if available



- b. If not available
 1. Click on the 3 dots on the far right

2. Click on Reload in Internet Explorer Mode from the drop down



6. A prompt will then come up to ask if you would like to open in Internet Explorer next time
- a. Toggle option to the right
 - b. Click done

