

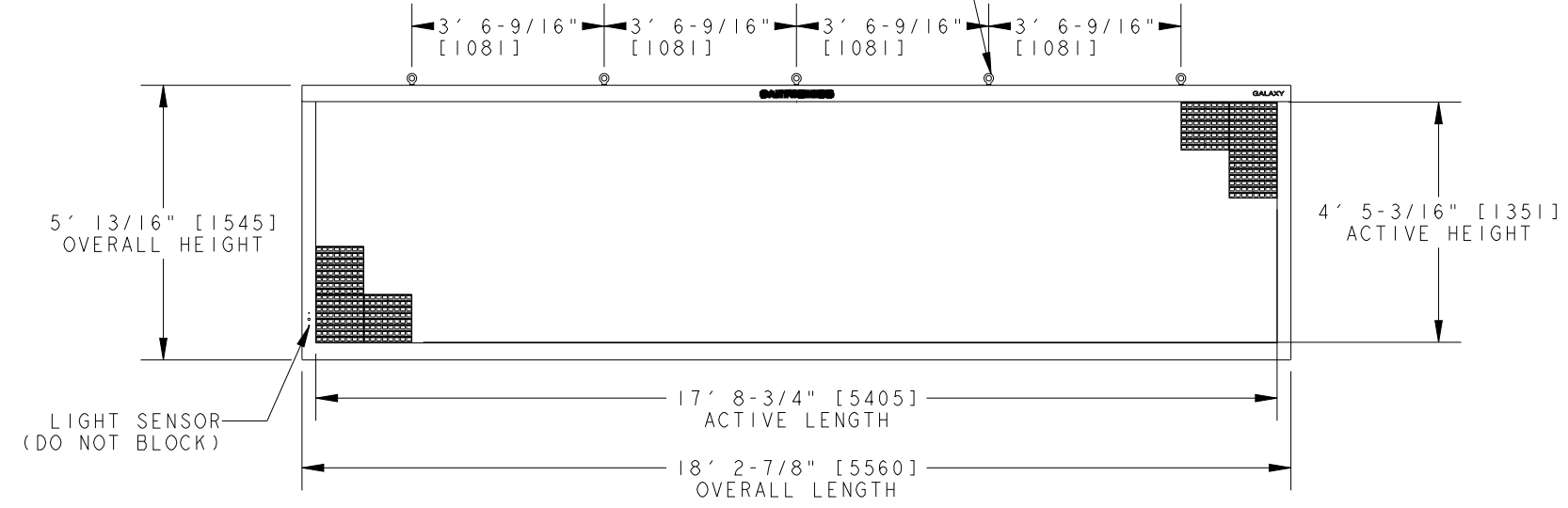
APPLICABLE DESIGN CODE: IBC 2006/2009

DESIGN WIND PRESSURE "P"	P ≤ 110 psf
--------------------------	-------------

IN ORDER TO MAINTAIN THE STRUCTURAL INTEGRITY OF THE DISPLAY CABINET, THE 90° ANGLE BETWEEN THE CABINET AND THE LIFTING METHOD MUST BE MAINTAINED. ALL EYEBOLTS MUST BE USED WHEN LIFTING.

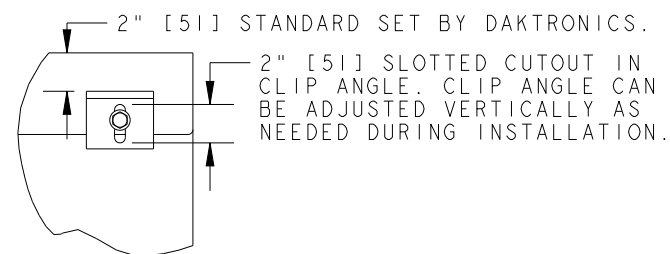
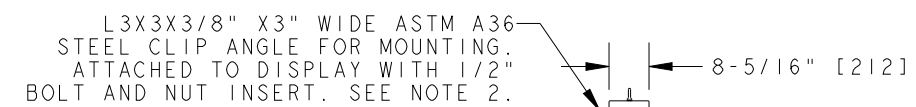
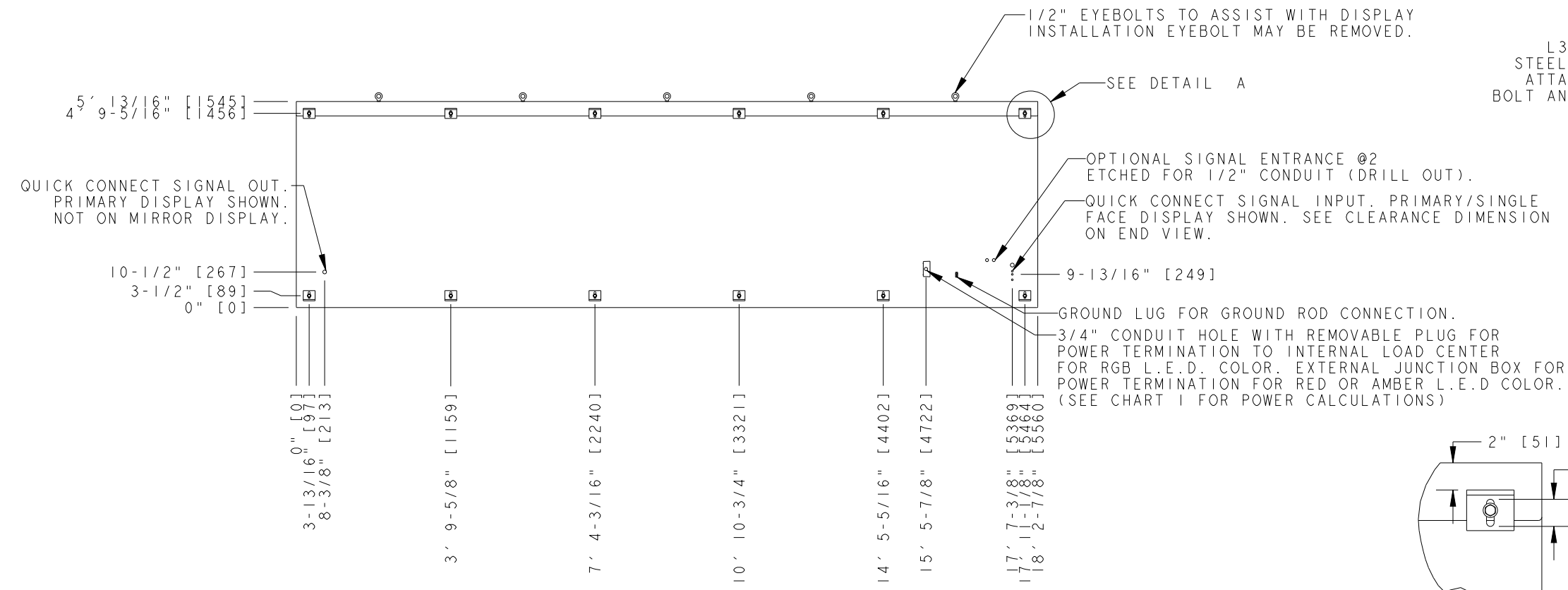
		CHART 1 POWER REQUIREMENTS PER SINGLE FACE		
COLOR	WATTS	120 VAC, 60 Hz (2 WIRE + GND)	120/240VAC, 60 Hz (3 WIRE + GND)	240VAC, 1PH, 50 Hz (2 WIRE + GND)
		AMPS	AMPS*	AMPS
RED	1687	N/A	7.98	7.03
AMBER	2046	N/A	9.18	8.52
RGB	3522	N/A	14.72	14.68

*AMPS LISTED ARE HIGHEST LEG OF CIRCUIT.



NOTES:

1. EYEBOLTS MAY NOT BE USED FOR PERMANENT INSTALLATION.
2. ALL CLIP ANGLES (OR THEIR LOCATIONS) MUST BE USED FOR DISPLAY INSTALLATION.
3. DISPLAY IS FRONT VENTILATED SO NO PORTION OF THE FRONT FACE CAN BE COVERED.
4. AIR INTAKE IS FILTERED. FILTERS MUST BE MAINTAINED FOR PROPER DISPLAY OPERATION.
5. ALL DIMENSIONS ARE IN FEET AND INCHES [MILLIMETERS].
6. DISPLAY IS ALL ALUMINUM CONSTRUCTION.
7. THIS DISPLAY IS SHIPPED AND INSTALLED AS A SINGLE UNIT.
8. DISPLAY CABINET COLOR IS SEMI-GLOSS BLACK.
9. FRONT ACCESS FOR SERVICE.
10. ESTIMATED WEIGHT IS: 760 LBS [345 KGS].
11. DISPLAY L.E.D. COLOR IS RED, AMBER, OR RGB.
12. POWER REQUIREMENTS ARE LISTED IN CHART 1 OF THIS DRAWING.
13. DAKTRONICS IS NOT RESPONSIBLE FOR THE MAIN ELECTRICAL DISCONNECT.
14. DAKTRONICS IS NOT RESPONSIBLE FOR THE MOUNTING HARDWARE OR THE INTEGRITY OF THE STRUCTURE THE DISPLAY IS MOUNTED TO.



DAKTRONICS, INC. BROOKINGS, SD 57006		THE CONCEPTS EXPRESSED AND DETAILS SHOWN ON THIS DRAWING ARE CONFIDENTIAL AND PROPRIETARY. DO NOT REPRODUCE BY ANY MEANS WITHOUT THE EXPRESSED WRITTEN CONSENT OF DAKTRONICS, INC. COPYRIGHT 2010 DAKTRONICS, INC.	
DO NOT SCALE DRAWING			
PROJ: GALAXY AF-3500 34MM DISPLAYS			
TITLE: SHOP DWG, AF-3500-40X160-34			
DESIGN: TWHITEH	DRAWN: RKAZMER	DATE: 17 SEP 09	
SCALE: 1=40			
SHEET: 1 OF 1	REV: 01	JOB NO: P1472	FUNC-TYPE-SIZE: E-10-B
			915222

01	15 NOV 10	UPDATED "SIGNAL IN" AND "SIGNAL OUT" QUICK CONNECT LOCATIONS.	JDG
REV	DATE:		BY: